

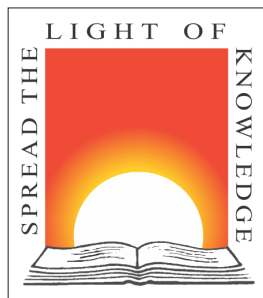


# NIRMA UNIVERSITY



SHAPING FUTURE OF HUMANKIND





(Right) Dr. Karsanbhai K Patel - Founder  
(Left) NERF logo

## Nirma Education and Research Foundation (NERF)

---

Nirma Education and Research Foundation (NERF) was established in the year 1994 by the renowned industrialist and philanthropist Dr Karsanbhai K Patel to promote higher education in India. The trust chaired by Dr Karsanbhai K Patel established Nirma Institute of Technology, affiliated to Gujarat University in 1995. It was followed by the establishment of the Nirma Institute of Management in 1996.

In the year 2003, the Government of Gujarat approved the proposal of the NERF to found the Nirma University, Ahmedabad. Hence, the Nirma University was established under a special Act passed by the Gujarat State Legislative Assembly. The University Grants Commission (UGC) duly recognised the University under Section 2 (f) of the UGC Act.

Besides higher education, the NERF is equally committed to school education. It strongly believes in the fact that a strong foundation is a prerequisite for education. With this philosophy, it runs two schools in Ahmedabad, where the emphasis is laid on providing value-based education clubbed up with innovative educational practices.



(Top) Nirma University front gate

## Overview

Established in the year 2003, the Nirma University, Ahmedabad is a research-oriented, student-centric, multidisciplinary, not-for-profit state private university. Under the leadership of Padma Shri Dr Karsanbhai K Patel, Chairman, Nirma Group of Industries and Nirma Education and Research Foundation (NERF), and President of the Nirma University, the University is expanding every passing year and has emerged as a nationally renowned higher education institution. It is the first choice of students, especially from Gujarat and the neighbouring states.

Nirma University is duly recognised by the University Grants Commission (UGC) under Section 2 (f) of the UGC Act. The University is accredited by the National Assessment and Accreditation Council (NAAC) with an 'A' grade. Major undergraduate programmes of the University are also accredited by the National Board of Accreditation (NBA) in Tier-I format. The University is a member of the Association of Indian Universities (AIU), and the Association of Commonwealth Universities (ACU).

Spread across the exuberant green 115-acre campus, the University has a host of institutes, departments, and centres, including Institute of Technology, Institute of Management, Institute of Pharmacy, Institute of Science, Institute of Law, Institute of Architecture & Planning, Institute of Commerce, Institute of Design, Faculty of Doctoral Studies and Research, Centre for Continuing Education, Centre for Entrepreneurship, Centre for Advanced Instrumentation, and Centre for Robotics and Automation. These institutions offer numerous undergraduate, postgraduate, and doctoral programmes. Apart from these, the University also offers several certificate and diploma programmes.

In 2021, the University in-principle has been conferred with the 'Centre of Excellence' by the Government of Gujarat. It is also awarded a 5-star status with an overall CGPA of 4.20 in the Gujarat State Institutional Rating Framework (GSIRF) 2021 by the Government of Gujarat. Thus, making the university one of the best private universities in Gujarat.



## Motto

तमसो मा ज्योतिर्गमय 'From ignorance, lead us to truth'

## Vision

Shaping a better future for mankind by developing effective and socially responsible individuals and organisations.

## Mission

Nirma University emphasises the all-round development of its students. It aims at producing not only good professionals, but also good and worthy citizens of a great country, aiding in its overall progress and development. It endeavours to treat every student as an individual, to recognise their potential and to ensure that they receive the best preparation and training for achieving their career ambitions and life goals.

## Quality Statement

To develop high quality professionals who reflect and demonstrate values that the university stands for, through innovation and continuous improvement in facilitation of learning, research and extension activities.

## Core Values

The University is driven by certain values that it believes in; and observes in its day to day functioning. Some of the core values of the University are:

- Student Centricity
- Contribution to the Society
- Quest for Academic Excellence

## Constituent Institutes

### Institute of Technology

Institute of Technology is a leading hub of education, offering multidisciplinary undergraduate, postgraduate and doctoral programmes in Engineering and Technology. All the undergraduate programmes offered by the Institute of Technology are accredited by the National Board of Accreditation (NBA) under the Tier-I category. As a constituent institute of Nirma University, it is also accredited with Grade 'A' by National Assessment and Accreditation Council (NAAC). It has been consistently ranked among the top self-financed Engineering Institutes of India. On October 3, 2020 the institute has completed 25 glorious years of imparting quality education and nurturing the students for holistic development.





## Institute of Management

Institute of Management imparts top-class business education and has produced new generation leaders and managers over the years. The Institute has built its reputation with a dedicated goal of adding value to life and professional standards. The institute's MBA programme is accredited by South Asian Quality Assurance System (SAQS) and National Board of Accreditation (NBA).



## Institute of Science

Institute of Science is established with the intent of providing quality education to postgraduate students whose career objectives go beyond academics. The Institute currently offers a Master of Science in Biochemistry, Biotechnology, and Microbiology and provides broad training encompassing science and ethics to students, enabling them to explore wide career opportunities. The alumni are well placed in reputed Bio-pharma companies and academics.



## Institute of Pharmacy

Institute of Pharmacy has been established with a view to prepare young men and women to meet the challenges in the area of pharmaceutical industries, education, research and development, and marketing. The undergraduate programme of the institute is accredited by the National Board of Accreditation (NBA).



## Institute of Law

Institute of Law is committed to exploring multidisciplinary approaches through its unique curriculum and revolutionising legal education through modern pedagogies thereby adapting to the changing world in which law professionals operate. The Institute focuses on developing knowledge, skills, and values amongst the students and provides the students the critical learning pedagogy, mentored and supported by the faculty and the staff.





## Institute of Architecture and Planning

Institute of Architecture & Planning aims at imparting high-quality education in the field of Architecture, Planning, and Built Environment. The institute offers a 5-year degree in Bachelors in Architecture (BArch) which is duly recognised by the Council of Architecture (COA). These creative programmes follow a pedagogy focusing on field-based experience, development of sensorial perception, interaction with the practitioners, and learning by doing. The institute also offers a Doctoral degree in Architecture and Planning. The institute has established itself as one of the leading architecture

institutes in the country. The institute is endowed with experienced faculties and the latest infrastructure facilities ensuring effective and socially responsible individuals capable of competing at the global level.



## Institute of Commerce

Institute of Commerce believes in serious academic pursuit through a prudent mix of relevance and rigour in its curriculum design and delivery concerning national and internationally relevant skills, knowledge, and ideas through intellectually stimulating debates and discussions, innovative teaching pedagogies, and exposure to relevant industry practice at all levels. The Institute is committed to ensure all-round development of its students so that they are ready for the challenges of the professional world.

## Institute of Design



The Institute of Design trains students towards becoming professional Communication designers and Industrial designers. The education focuses on divergent thinking and solutions for a design that is human-centered, context-driven and innovation directed. Contextual Inquiry through Field Research, Industry Internships, User-centered focus, and Output based learning is the pedagogy adopted. Students are competent in visualisation and creating prototypes that are proof of concepts.

## Faculty of Doctoral Studies and Research

Nirma University started the Doctoral Programmes in the year 2003. Currently, the Doctoral Programmes are offered in the fields of Engineering and Technology, Pharmacy, Science, Management, Law, and Architecture. The Faculty of Doctoral Studies and Research (FDSR) is the coordinating Faculty for the PhD programmes run by the constituent institutes of the University. The University offers both, Full-Time and Part-Time Doctoral programmes.





# UNIVERSITY at a GLANCE



**16** Countries



**26** States/Union Territories

## Gender Ratio



**66.85%**  
MALE



**33.15%**  
FEMALE



**₹ 46.47Lac**  
Highest Placement Salary

**Faculty**  
**382**

**PhD Students**  
**301**

**UG and PG Students**  
**9043**

## Student Startup & Incubation Centre

To support the innovations and ideas of young students and provide a conducive environment for the optimum harnessing of their creative pursuit, a Student Startup and Incubation Centre is established at Nirma University. It is recognised as a nodal agency of the Government of Gujarat under the Student Startup Innovation Policy (SSIP). The student's projects having commercial value are funded and guided from the ideation to pre-incubation to Proof-of-Concept stage, and finally turned into a startup company by providing technical, financial,

legal, and marketing mentorship. Any current student or alumnus of Nirma University for up to 5 years can apply and be a part of this scheme. Based on the initial scrutiny of the application, applicants are asked to submit a detailed business plan. The centre is incubating startups from different domains like Waste Management, Clean tech, Renewable energy, Digital marketing, IT, and, IoT, among others. The centre provides continuous mentorship to the registered incubate through multidisciplinary mentors.



Further information is available at  
<https://cenu.nirmauni.ac.in/studentincubation/>

Programmes

Integrated Programmes

- BTech (CSE)-MBA
- BA, LLB (Hons)
- BCom, LLB (Hons)
- BBA-MBA

Undergraduate Programmes

Institute of Technology

- BTech in Chemical Engineering
- BTech in Computer Science and Engineering
- BTech in Civil Engineering
- BTech in Electronics and Communication Engineering
- BTech in Electrical Engineering
- BTech in Mechanical Engineering
- BTech in Electronics and Instrumentation Engineering

Institute of Pharmacy

- Bachelor of Pharmacy

Institute of Architecture and Planning

- Bachelor of Architecture

Institute of Design

- Bachelor of Design (Communication Design)
- Bachelor of Design (Industrial Design)

Institute of Commerce

- Bachelor of Commerce (Hons)



Programmes

Postgraduate Programmes

Institute of Technology

- MTech in Computer Science and Engineering
- MTech in Computer Science and Engineering (Information & Network Security)
- MTech in Computer Science and Engineering (Data Science)
- MTech in Civil Engineering (Computer Aided Structural Analysis & Design)
- MTech in Electronics and Communication Engineering (VLSI Design)
- MTech in Electronics and Communication Engineering (Embedded System)
- MTech in Electrical Engineering (Electrical Power System)
- MTech in Mechanical Engineering (CAD/CAM)
- MTech in Mechanical Engineering (Thermal Engineering)
- Master of Computer Application (2-year Programme)

Institute of Management

- Master of Business Administration
- Master of Business Administration (Family Business & Entrepreneurship)
- Master of Business Administration (Human Resource Management)
- Master of Business Administration (Communication)

Institute of Pharmacy

- MPharm in Pharmaceutics
- MPharm in Pharmaceutical Analysis
- MPharm in Pharmacology
- MPharm in Regulatory Affairs

Institute of Law

- LLM in Constitutional and Administrative Law
- LLM in Criminal and Security Law

Institute of Science

- MSc in Biotechnology
- MSc in Microbiology
- MSc in Biochemistry

Institute of Architecture and Planning

- Master of Architecture

Doctoral Programmes

- Technology
- Management
- Pharmacy
- Law
- Science
- Architecture and Planning

## Infrastructure

Buildings of all the constituent institutes have a host of amenities including amphi-theatre classrooms equipped with multi-media and audio-visual equipment, spacious seminar halls and auditoriums with varied capacities, hi-tech advanced laboratories with the latest equipment, and studios, to name a few. Smart classrooms facilitating virtual sessions are also set up to enhance the learning experience of students.

The University libraries are equipped with the latest facilities. Each Institute of Nirma University has a separate library located in the respective institute's building. To facilitate users with reading and brainstorming, separate reading rooms have been provided along with the library. All libraries are digitally connected and have many shared resources. A remote log-in facility is provided to access electronic resources 24 x 7 and ensure high network security.

The computing facilities at the campus include state-of-the-art computer laboratories, with the latest configuration computers, modern software, and high-speed servers. The University has specialised computer laboratories like, NVIDIA supported Deep Learning Lab, High Performance Computing Lab, Networking and Internet of Things Lab, Information and Network Security Lab, CISCO Lab, DBT funded Lab, and PARAM 10000 Super Computer (parallel processing for an extensive numerical job). A gigabit network connects every nook and corner of the University. A 1.2 Gbps dedicated optic fibre leased line and Wi-Fi hotspots enable round-

the-clock Internet connectivity on the campus.

The University has well-equipped laboratories with the necessary analytical equipment, simulation software, and experimental setup. Some of the noteworthy laboratories are the Heavy Structural Lab, Earthquake Engineering Lab, Thermal Insulation Testing Lab established under the NAFETIC Scheme of AICTE, Robotics Lab, etc. The Centre for Advanced Instrumentation, a central instrumentation facility has high-end instruments for pursuing research activities.

In addition, there are Animal Cell Culture Facility, Insectariums, and Animal House. There are several studios with spatial arrangements of drafting tables and working space for model making, and display area are created to provide a hands-on learning experience to the students of Architecture and Design.

The University campus has modern infrastructure to facilitate almost all indoor and outdoor sports activities. The students are encouraged to make use of these facilities regularly. The Students Activity Centre has facilities for indoor games including carom, chess, and table tennis. It also has a well-equipped gymnasium. The campus has a well-maintained cricket ground with three hard bowling pitches. Further, there is a running track, three lawn tennis courts, two volleyball courts, two basketball courts, and space for football and kho-kho as well.



- (1) Auditorium
- (2) Design Classroom
- (3) Library
- (4) Sports ground
- (5) Gym





## Upcoming Infrastructure

The pace at which the University is growing there is a constant need to upgrade, update and add new infrastructural facilities. Keeping this in account, the University is developing new infrastructure comprising three main buildings. The first building block has a classroom cluster and a huge computer centre, the second block houses a Convention Centre, and the third building comprises an institute, classroom clusters, Central Library, and space for different offices. The total area covered by these three new blocks is 1,52,337 sq m in addition to the 1,31,189 sq m existing infrastructure.

## Facilities

### Health Care Centre

The in-campus Health Care Centre is equipped with all the basic facilities for treatment for all primary diseases. A non-resident doctor is available for consultation on all working days. The doctor can be contacted over the phone as well in case of any emergency. The University also has an ambulance facility available round the clock.

### Counselling Centre

Keeping the academic, social-psychological, and emotional needs of its students in mind, the University has a dedicated Counselling Centre on its campus. The counsellor systematically studies and discusses the student's problems and facilitates the student to find an appropriate solution.

### Transportation and Parking

The Nirma Education and Research Foundation maintains a fleet of forty-three buses. Of which the University operates a fleet of twenty buses that ply in almost all the areas in Ahmedabad and Gandhinagar. The transportation facility is available for students, faculty, and staff members. In addition, there are seven Sumos and twelve cars available to the faculty members for movement within the campus or for any official work. Parking lots are available on the campus for two-wheelers and four-wheelers close to different institutes.





## Student Store

The university campus houses a student store that supplies textbooks, stationery items, and other essential commodities for the convenience of the students. Photocopy and coloured printing facilities are also available for the students, employees, and other visitors. The students use this facility for various projects and assignments. A general store is also located in the hostel mess area to cater to the day-to-day needs of the students, especially those staying on the campus.

## Hostel Facility

All female students hailing from other states and nations are eligible for hostel facility. For international male students, the University shall help them to find accommodation in its recognised private hostels.

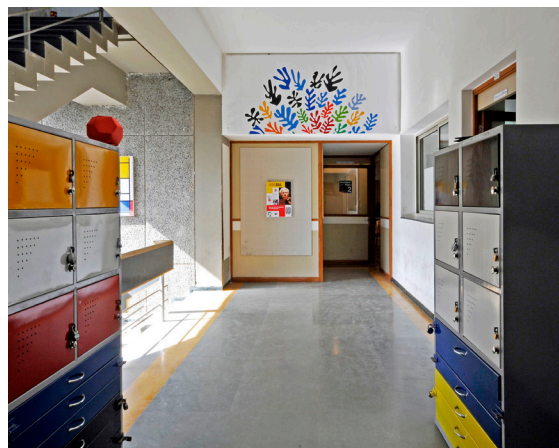
The hostel rooms are spacious and well-furnished. The hostels have sports and other recreational facilities such as cable TV, a common room for interaction, etc. All hostel rooms have round-the-clock internet connectivity. There is a full-fledged mess facility for the students staying in the hostels.

## Bank and ATMs

A branch of the Kalupur Commercial Co-operative Bank Limited (KCCBL), a scheduled bank, is located on the University campus. The banking hours are from 9:30 am to 4:30 pm. The facility is open to all students, staff, and faculty of Nirma University and its Institutes. The bank has set up two ATMs on the campus.

## Food Court

In addition to the mess facility for the students staying in the hostels, the University has a central dining facility for its students, staff, and faculty members located in one of the buildings. Besides providing breakfast, lunch, high tea, snacks, and beverages, the canteen has a facility to arrange food for different events organised on the campus. The campus has two food courts providing a variety of food and beverages all through the day. These places not only provide fresh and healthy food but also double up as a meeting and social interaction joint for the students.



## International Relations

With the advancement in communication technologies and changing mindset of people around the world, globalisation has been increasing at all levels in the last decade. Leveraging on this, Nirma University has also collaborated with universities and multi-national companies and aims to work for mutual benefit through strategic partnerships. The collaboration between universities and multi-national companies also helps practical research, employment, and social engagement. The Office of International Relations manages the foreign collaborations and also supports the foreign community on the campus.

### International Admissions

The University has a separate intake of 5% for Children of Indian Workers in Gulf Countries and Southeast Asia (CIWGC-SEA).

Also, the foreign students having a non-Indian passports (FN), or foreign students having non-Indian passport and also having the OCI or PIO card (OCI/PIO) can apply under OCI/PIO/FN supernumerary category that has 10% intake reserved. The supernumerary seats are available for all programmes. This category includes students from SAARC countries as well. The tuition fee structure for SAARC students is same as the domestic students.

The Office of International Relations is dedicated to helping international students, faculty, and scholars in achieving their academic, personal, and professional goals through advising, facilitating visa processes, promoting cross-cultural opportunities, and offering specific services keeping in mind the international aspects.

For more information, please contact:  
Dr Mehul R Naik  
Head, International Relations  
E-mail: [mehul.naik@nirmauni.ac.in](mailto:mehul.naik@nirmauni.ac.in)  
Phone: +91-79-71652499

Further information on the international admission process is available at <https://internationalrelations.nirmauni.ac.in/>





Nirma University,  
Sarkhej-Gandhinagar Highway,  
Ahmedabad - 382 481,  
Gujarat, India



+91-79-71652000,  
+91-2717-241900-04,  
+91-2717-241911-15



[contact@nirmauni.ac.in](mailto:contact@nirmauni.ac.in)



[www.nirmauni.ac.in](http://www.nirmauni.ac.in)