

KUTIR GRAM

FACTORY WORKERS

DINESH M BHANSALI
18BAR004

PERSPECTIVE

U_KNOWN



STORY

ALIEN

ABSTRACT MODEL

opportunity

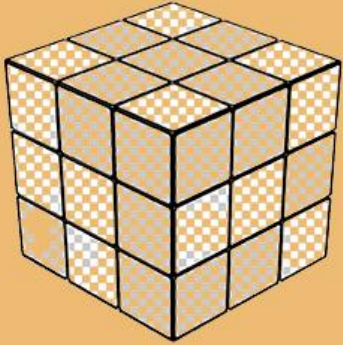
U - KNOWN

MOVEMENT FROM RURAL TO URBAN



ESSENCE OF MOVIE

LET'S SEE BOX FROM ALL OTHER SIDE
RATHER THAN THINKING OUT OF BOX



Looks at the things from differnt side and
applies them as per his convenience.



NON-CONFORMIST

PERSPECTIVE.

HOW DO YOU INTERPRET THE THINGS?

LOOK AT ALL SIDES TO KNOWN THE TRUTH.

DIFFERENT WAYS.

DIFFERENT APPROACHES.

DIFFERENT
INTERPRETATIONS

FAILS MISERABLY.

AT THE END DISCOVERS
SOMETHING

DIFFERENT SCALES OF SPACES



HIS OWN SPACE.

NOT BUILT.

DIFFERENT ELEMENTS.

SMALL CORNER OF A
LARGE SPACE.

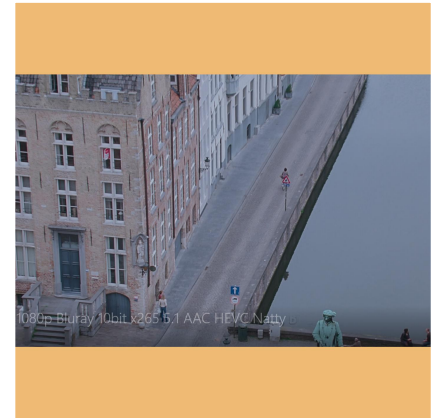


- MORE UNKNOWNs.
- DIFFERENT ACTIVITIES.
- A PLACE FOR **UNKNOWNs** TO MEET.



A SPACE TO
EXPRESS
YOURSELF.

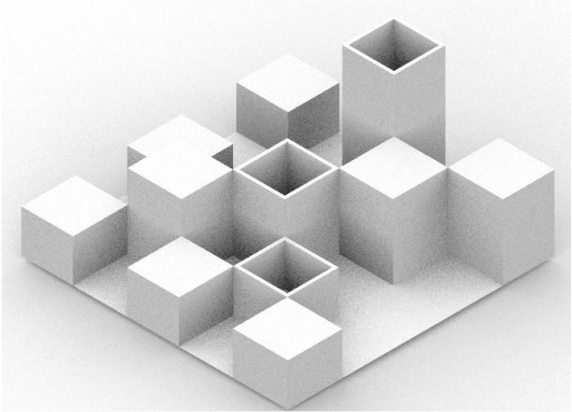
DARK NIGHT.



MOVEMENT.

LARGE SPACE

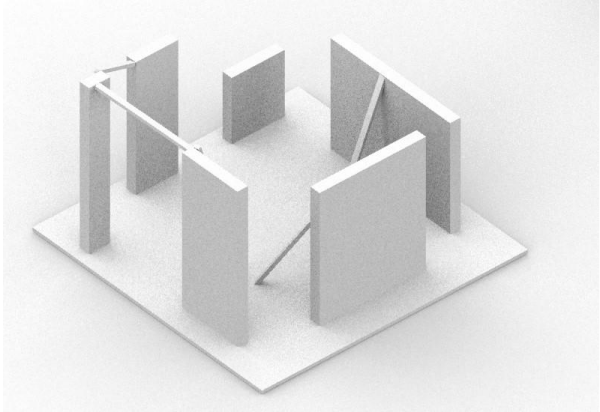
ABSTRACT MODELS.



PERSPECTIVE

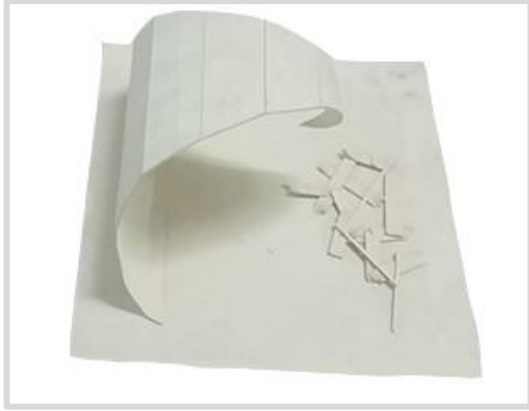


RISE UP AND PRIVACY



OPPORTUNITY AND WAYS

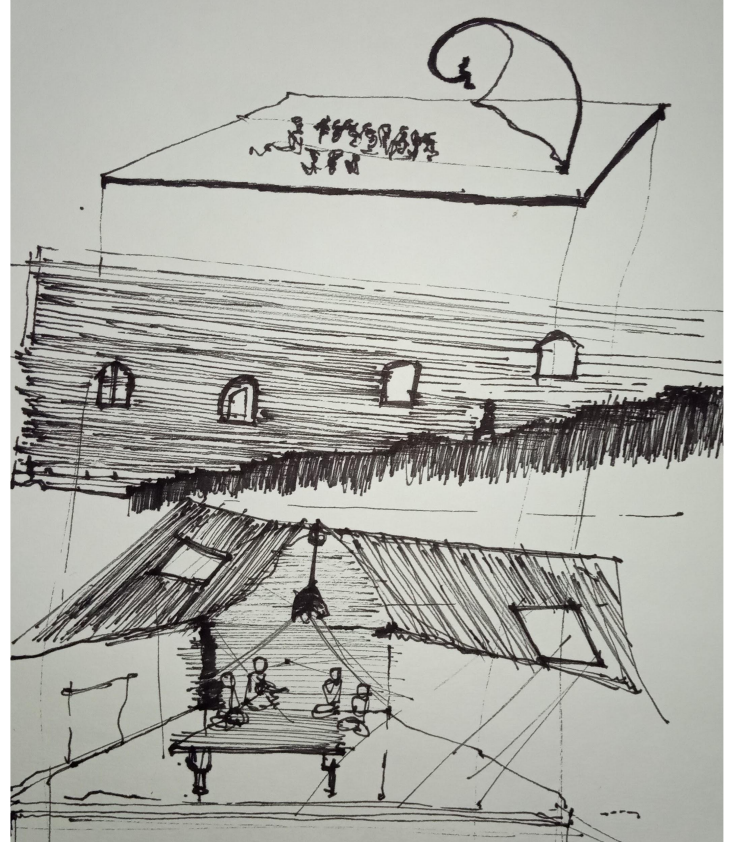
SPACE VS MODEL INTERPRETATIONS



ROOF AND
TERRACES



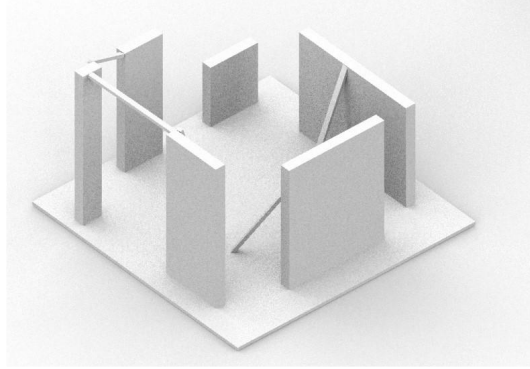
STEPS RISING UP



SPACE VS MODEL INTERPRETATIONS

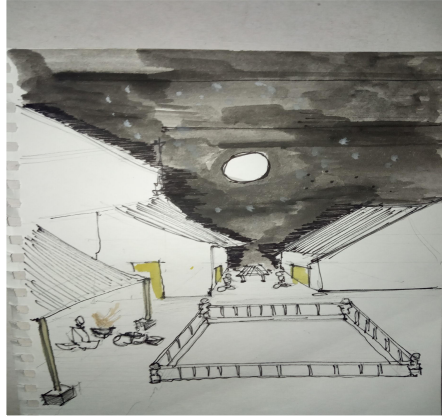
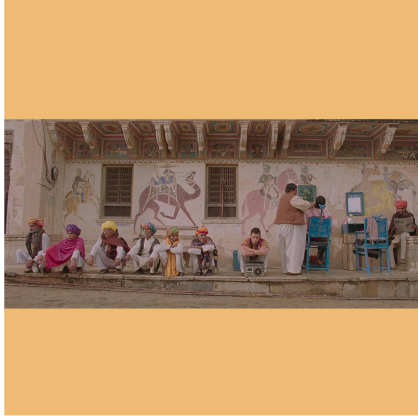


UNIT

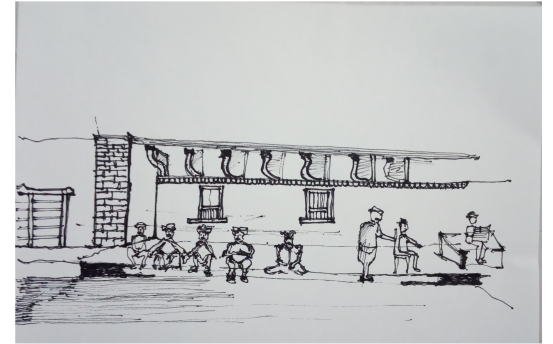


OPPORTUNITIES

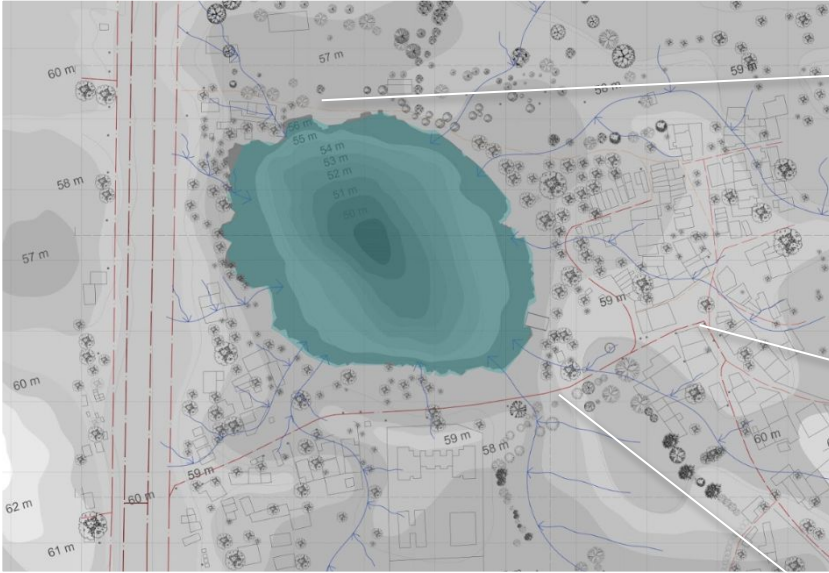
SITE



NIGHT



SITE ANALYSIS



FACTORY SITE
SINGLE ROW
SMALL BLOCKS
LARGE SPACE
IS OUTSIDE.



TEMPLE FORMING
IMPORTANT PLACE
AT THE CHOWK

BECOMING A
PLACE FOR
INTERACTION.

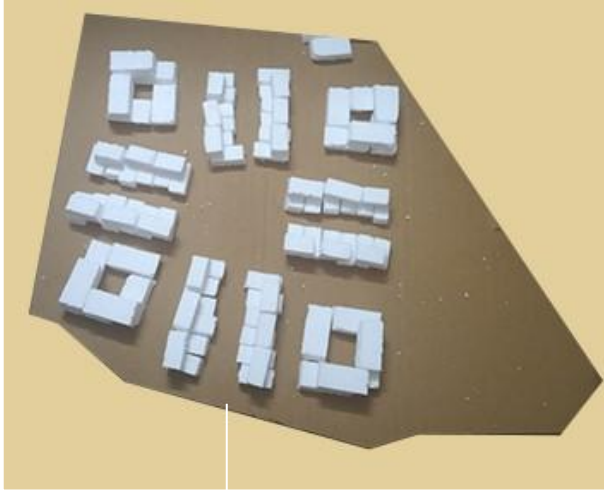


SEMI PRIVATE SPACE
FORM BY DIFFERENT
ELEMENTS

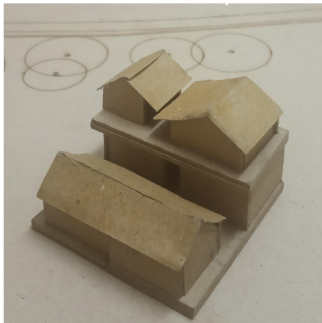


NATURE OF
SPACE AROUND
THE LAKE EDGE
VS INBETWEEN
THE VILLAGE.

MASSING MODEL



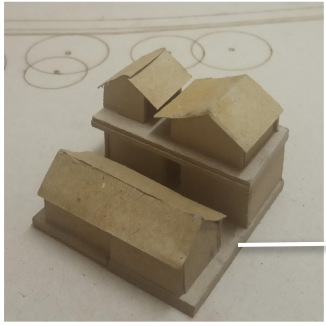
CENTRALITY.
ROW FORMATION.
LINEAR VS SQUARE.
CLUSTER AND UNIT.
FORMATION



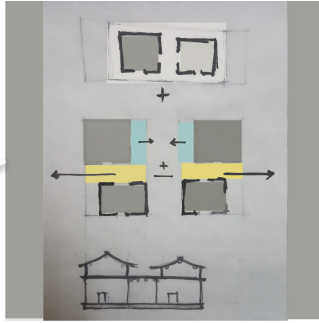
FORMING
COURTYARDS AT
DIFFERENT PLACES
IN TERMS OF
INTERACTIONS AND
PRIVACY.

TERRACES AND COURTYARDS DIFFERENT FORMATIONS

MASSING MODEL



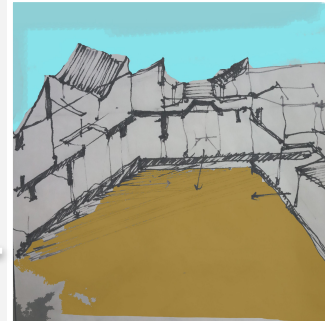
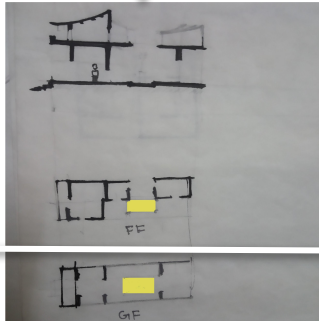
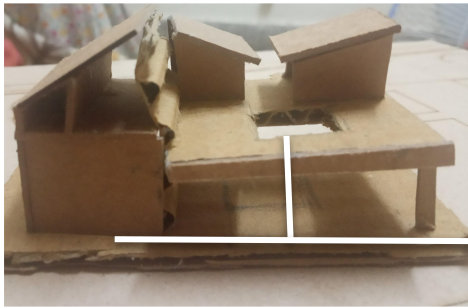
DON'T THEY NEED PRIVACY?
WHY ONLY LINEAR **STREET**?
PRIVATE COURTS.
BALANCING BOTH.



TRYING TO COMBINE COURTS AND TERRACES
IN TERMS OF PRIVACY AND INTERACTION.



⇒ **FORMING LINEAR**
COURTS.
3 UNITS
TERRACES
PRIVACY LACKING
INTERACTION STREET.



ENCLOSURE.
SQUARE.
CENTRAL COURT AND
TERRACES
LESS SENSE OF OPEN
AND CLOSE.

UNIT TO CLUSTERS (MID SEM)



3 UNITS CLUSTER

TAKING FORWARD THE IDEA OF TERRACES AND COURTYARDS AND THINKING OF LIGHT IN TERMS OF SPACE.

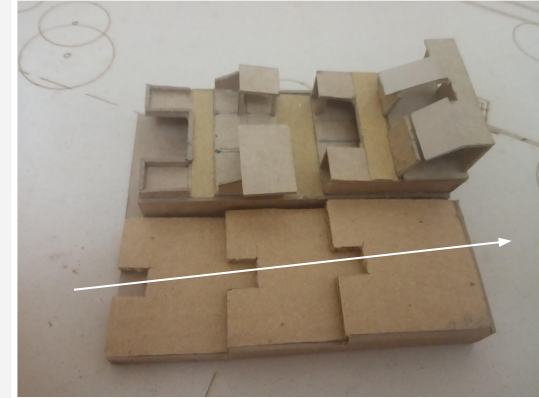
THINKING OF SPACES IN TERMS OF ITS **ACTIVITIES**.



PLAN AND SECTIONS

VERANDAH+ COURT
LIVING
SERVICES
KITCHEN+COURT
PRIVACY

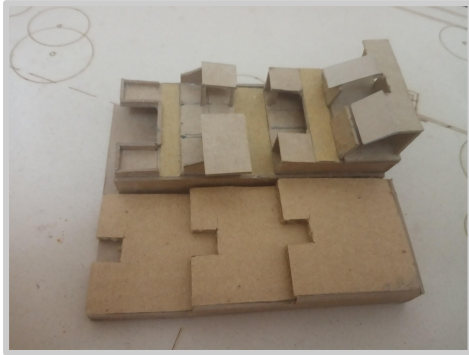
INTERACTIONS



CLUSTER 6 UNITS

STREETS.
INTERACTIONS
COMBINING IDEA OF **STEPS**
WITH THEM.
MAKING **PASSAGES** A SPACE.
FORMING **TERRACES+PASSAGES**.

CLUSTER TO SITE (MID SEM)



CLUSTER AND STEPS



SITE DIAGRAM

REPEATING MODULES.

LINEARITY.

LAKE EDGE RESPONSE.

SITE EDGES.

FORMING INTERACTIVE SPACES AT DIFFERENT PLACES IN SITE.

CONNECTING WITH VILLAGE GRAM PANCHAYAT.

SLOPE AND CONTOURS.

MID SEM CRITIQUE

UNIT SPACE VS COMMUNITY SPACE.

THE UNIT SIZE REDUCES AND MOST ACTIVITIES HAPPENS OUTSIDE.

DEVELOPMENT OF **SITE EDGES**.

IN DEPTH ANALYSIS OF SITE CONTEXT AND SITE **CHARACTERS**.

FORMING MORE SUCH **INTERACTIVE** SPACES.

TERRACES AND NIGHT **LEISURE** TIME.

UNDERSTANDING THE **DRAINAGE** PATTERN.

FORMING INTERACTIVE SPACES AND WORKING ON UNITS.

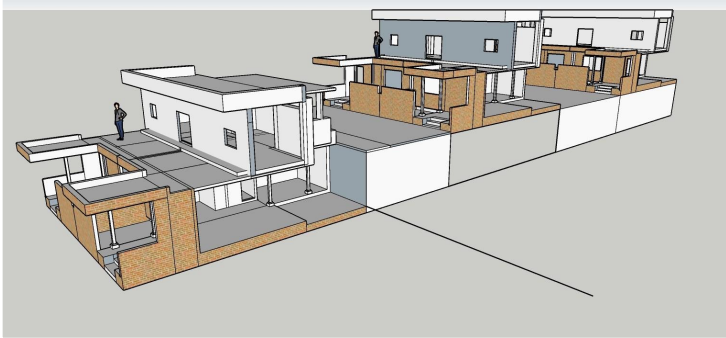
UNIT TRANSFORMATION

SPACES

INTERACTION

EXTENSION

OUTSIDE HOUSE



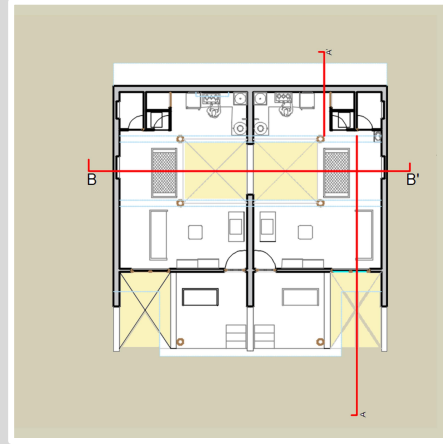
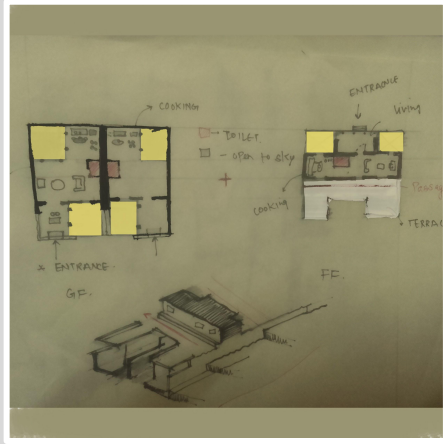
TERRACES AND PASSAGES AS A DESIGN ELEMENT?
HOW COURTYARD WILL BE PART OF LIVING?
HOW **PLINTH** CAN BE DESIGNED IN TERMS OF INTERACTION.

EXTENSIONS TOWARDS STREET.

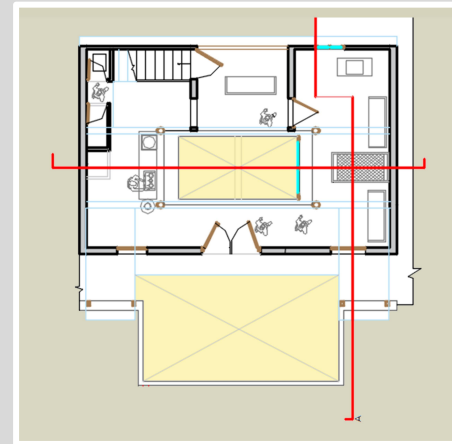
ANTHROS

MAKING COURTYARDS A PART OF A **LIVING**.
FURTHER DEVELOPING VERANDAH.
DEVELOPING THE ABOVE UNITS IN TERMS OF ANTHROS.
SERVICES.
PLINTHS

PHASE 2: UNIT LEVEL

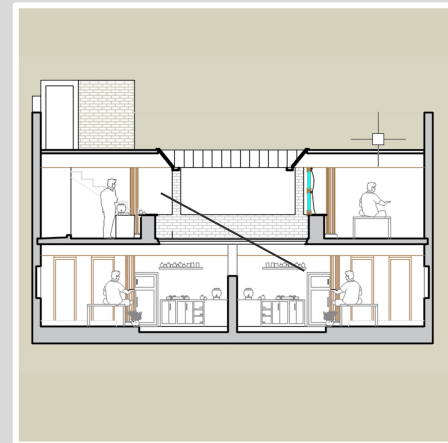
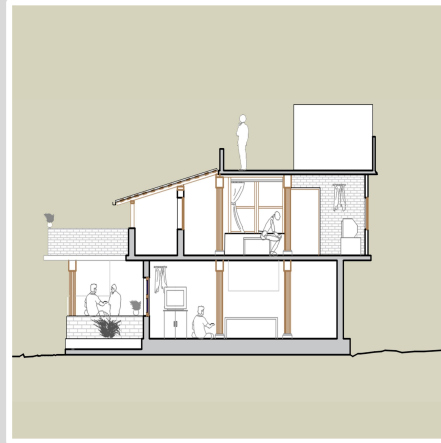


GROUND FLOOR

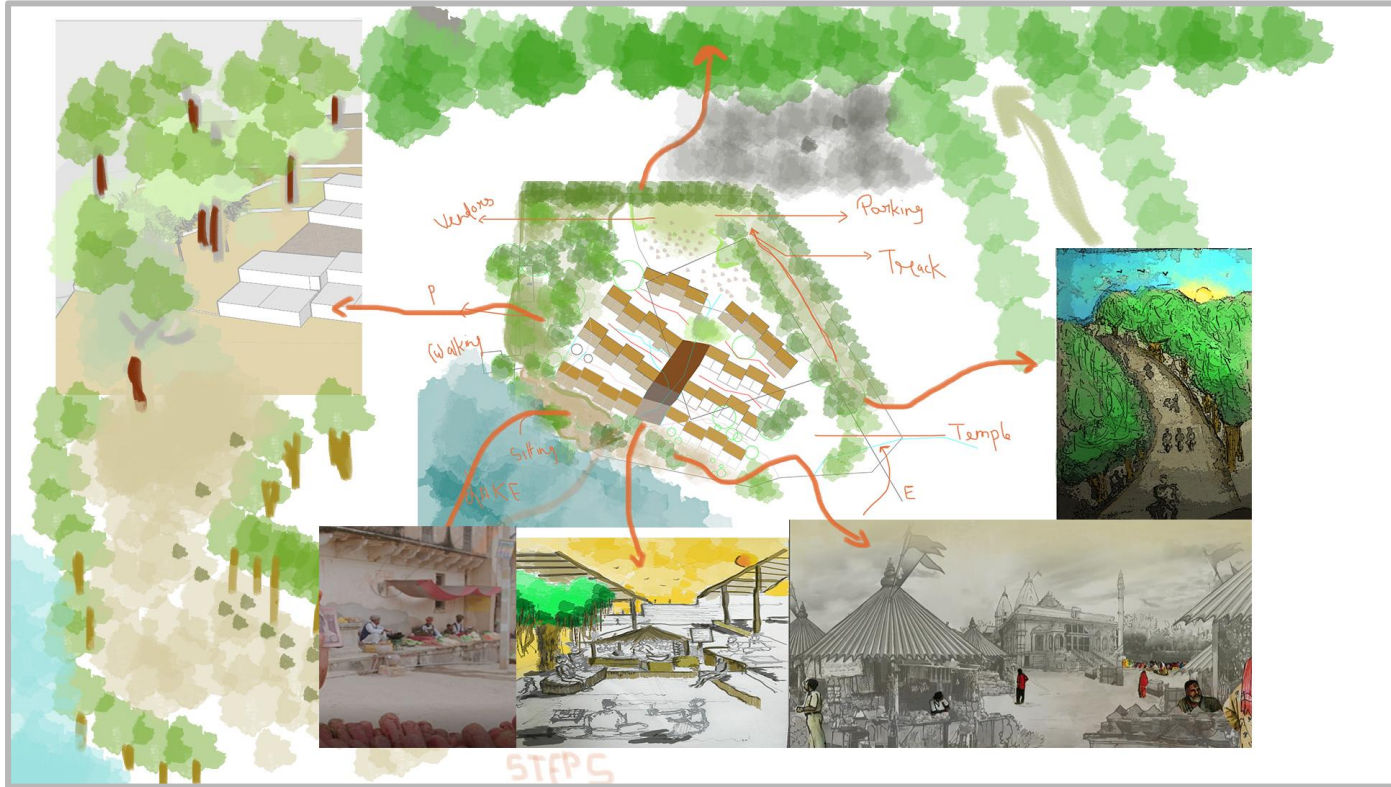


FIRST FLOOR

TERRACES
TRANSITION
PRIVATE SPACE
COURTYARDS ONE CAN
SEE INTO OTHERS HOUSE.
ORGANIZATION
OPEN
SEMI OPEN.
PRIVATE



PHASE 2 :SITE LEVEL



CREATING VARIOUS MOMENTS AND INTERACTION AT SITE LEVEL

PHASE 2 :SITE SECTIONS



CRITIQUES

UNIT LEVEL

TRANSITION BETWEEN CLOSED AND OPEN.

COURTS PRIVACY
MORE PRIVATE SPACES.
BEDROOM.
ANTHROS.

SITE LEVEL

PASSAGES
SITE CONTOURS FILL AND CUT.
LOW **COST** TECHNIQUES.

TRYING TO FORM INTERACTIVE SPACES ALONG WITH STEPS.

CASE STUDY INTENT

HRIDAY KUNJ
LAURI BAKER LOW COST TECHNIQUES
CIDCO HOUSING
ASIAD VILLAGE

CASE STUDY AND DESIGN INTENTS.

TRANSITION VERANDAH.
COURTYARD AND TRANSITION SPACE AROUND IT.
LOW COST TECHNIQUES
TERRACES AND COURTS
STEPS (STAIRCASE).
PASSAGES FORMING SPACES.

ARCHITECTS INTENT.

TO CREATE **TERRACES** AND **COURTYARDS** AS A
INTERACTIVE SPACE BY BALANCING PRIVACY.

TO FORM PEDESTRIAN **PATHWAYS** AND MAKING PASSAGES
AS A INTERACTIVE SPACE.



CIDCO HOUSING CLUSTER FORMATION

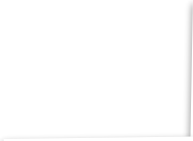
CASE STUDY INTENT



VERANDAH



CIRCULATION AND TERRACES

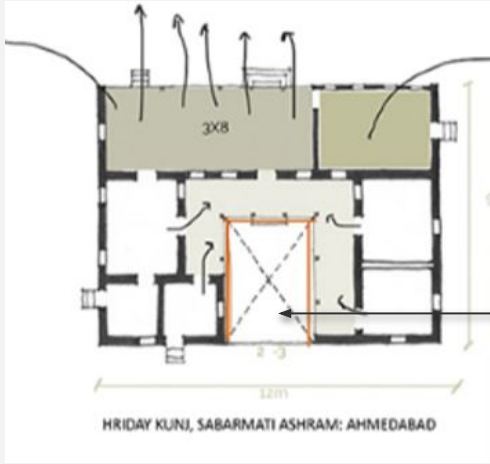


DESIGN

CASE STUDY (HRIDAY KUNJ)

PURPOSE

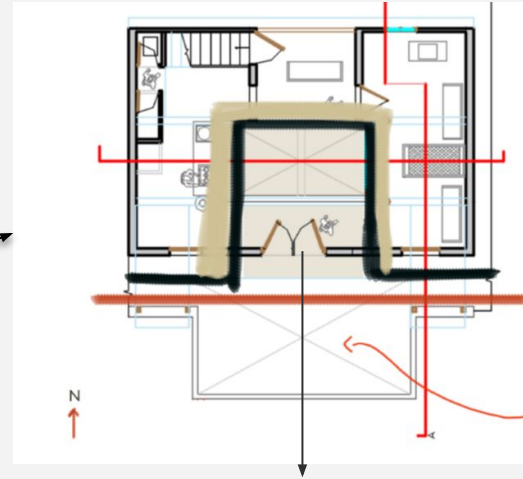
TRANSITION
VERANDAH
CENTER
COURTYARD



ROOM

MOVEMENT
AROUND THE
CENTER

INTERPRETATION



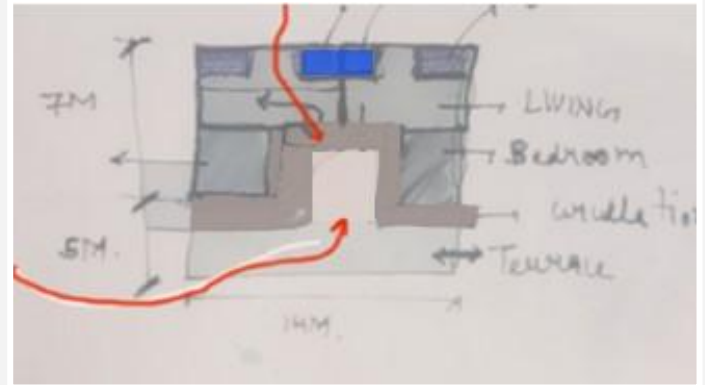
DIVISION
OF
UNIT INTO 2.

FORMING OF
TERRACES.

FORMING
CORIDERS.
CIRCULATION



IMPORTANCE
GIVEN TO
VERANDAH IN
TERMS OF **SPACE**
USAGE.

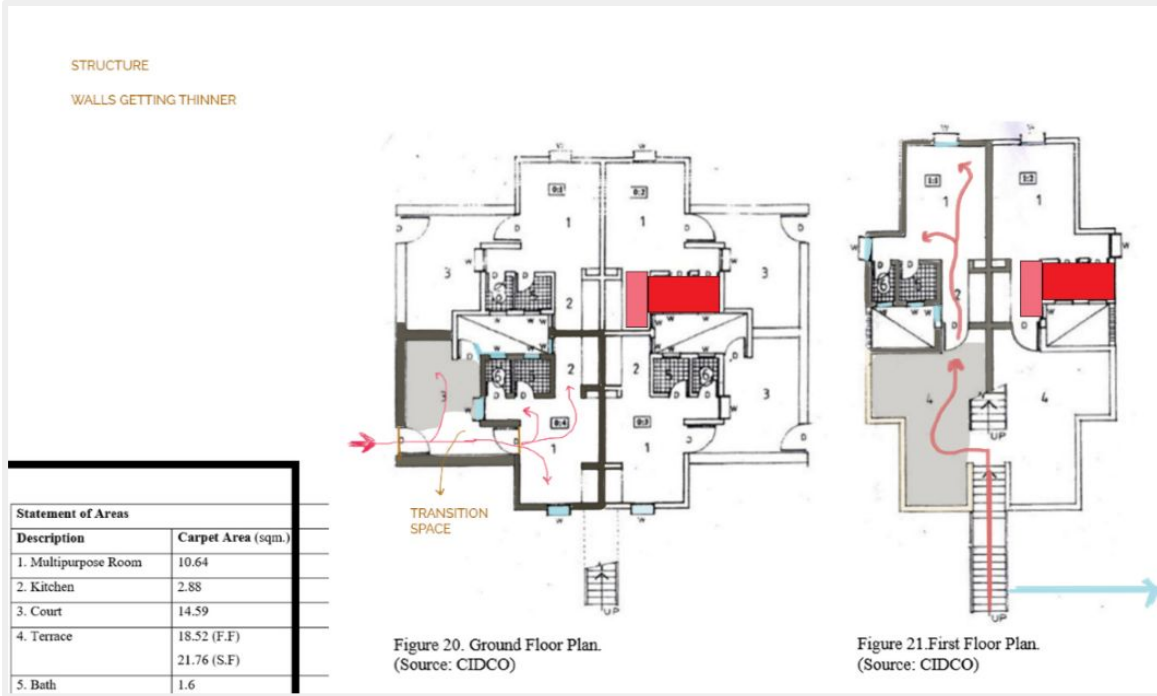


PURPOSE

COURTS VS TERRACES

PRIVACY VS INTERACTION

BALANCING BOTH .



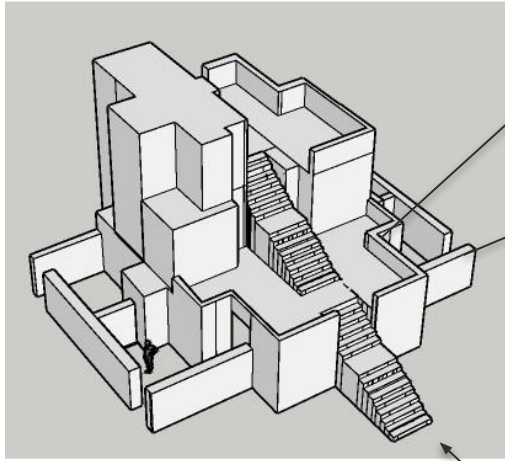
2 TERRACES COMING TOGETHER.

STAIRCASE AS AN ELEMENT TO MAINTAIN PRIVACY.

MORE AREA GIVEN TO COURT.

COMBINING **SERVICES** TOGETHER AS A CENTRAL CORE.

BALANCING PRIVACY AND INTERACTION.



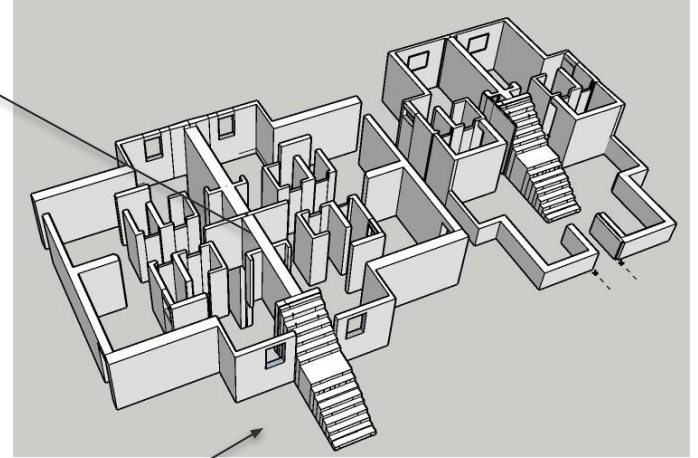
TERRACES

COURTS

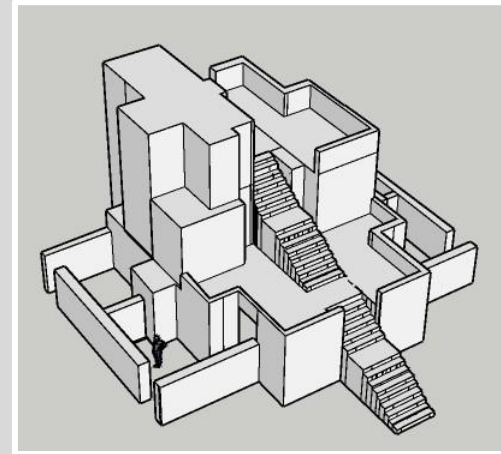
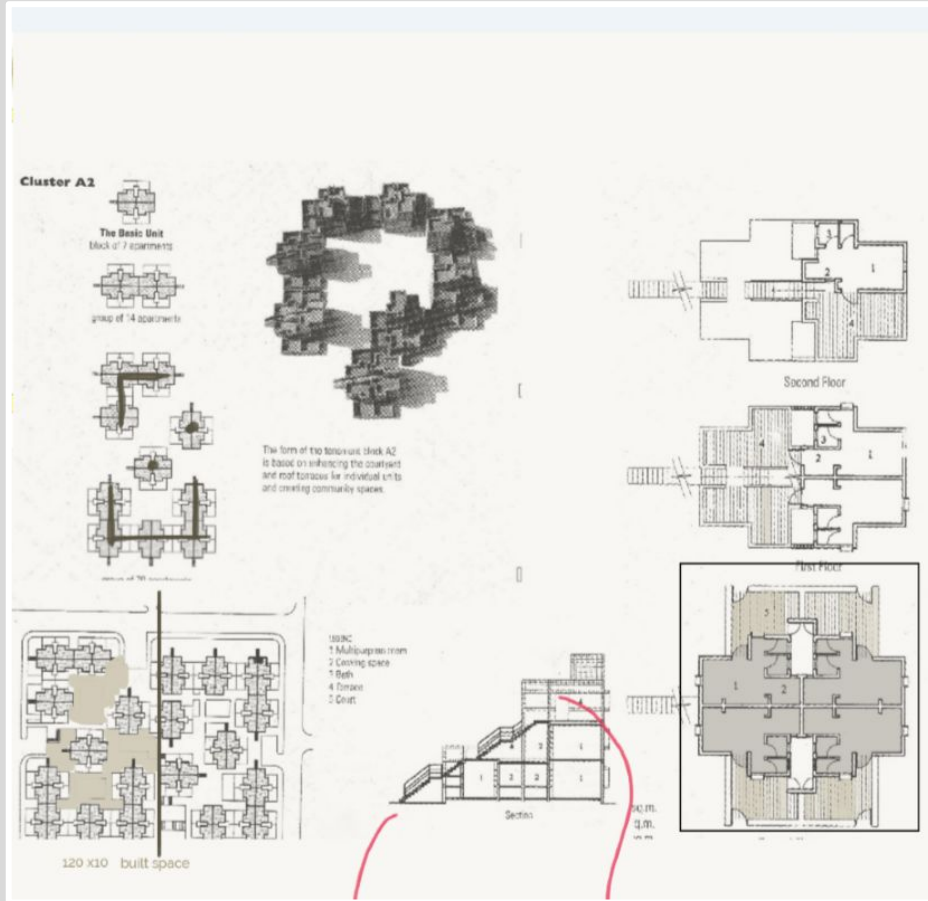
APARTMENT OF 7 UNIT
4 + 2 + 1

STEPS FORMING SPACE.

SERVICES



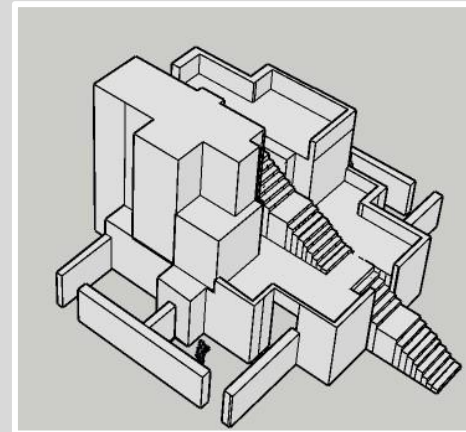
CASE STUDY (CIDCO HOUSING)

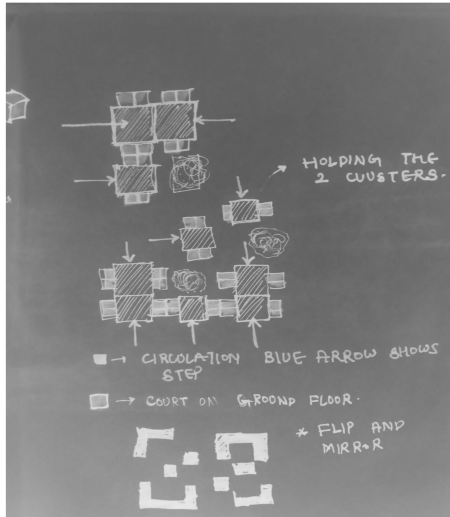


**TOTAL 20
APARTMENTS**

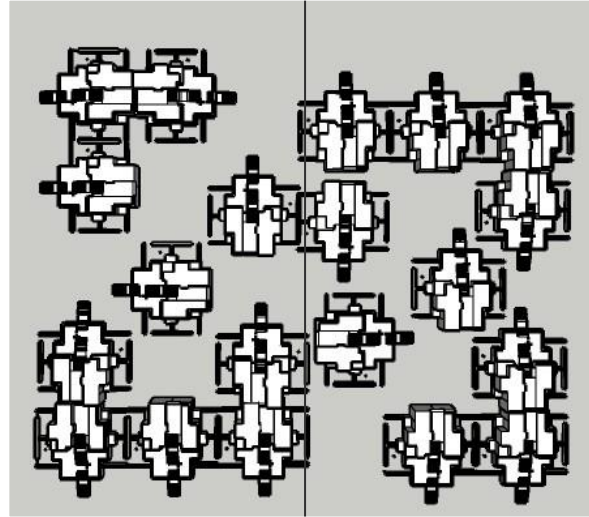
**EACH APARTMENT
HAS 7 UNITS**

**STEPS ARE PLACED
IN DIFFERENT
DIRECTIONS SO AS
TO CREATE
MOVEMENT ALONG
CLUSTER.**

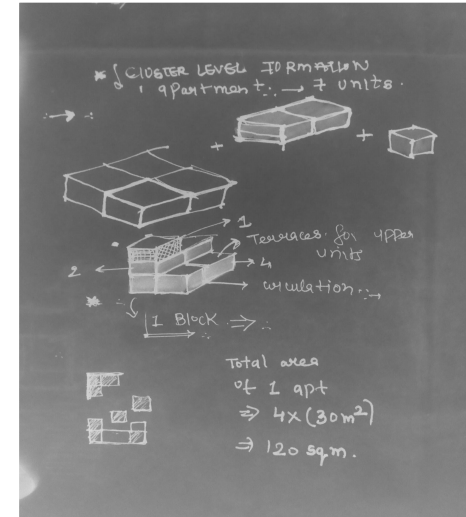




CIRCULATION

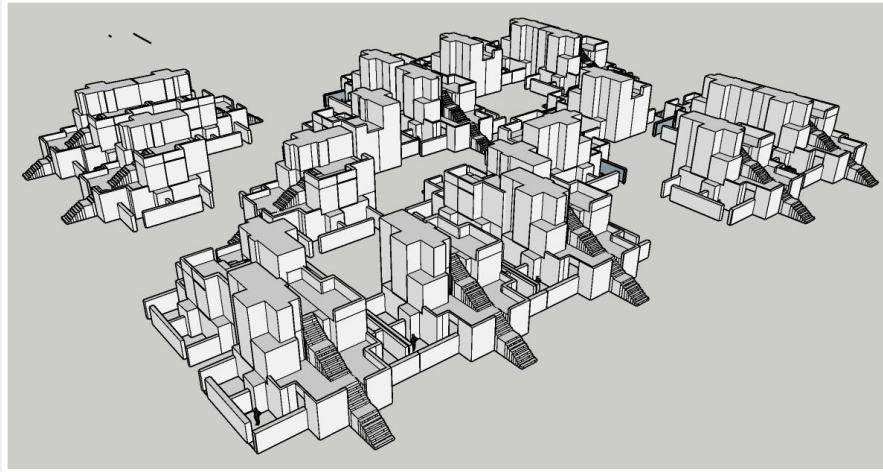


REPETITION AND MIRROR



HIERARCHY IN APARTMENTS.

CASE STUDY (CIDCO HOUSING)



HERE THE ARCHITECT INTENT WAS TO DEVELOP **PEDESTRIAN** PATHWAYS SO IN ORDER TO ACHIEVE THAT HE ORIENTED **STAIRCASES** IN DIFFERENT DIRECTIONS SO AS TO ALLOW MOVEMENT THROUGH DIFFERENT WAYS.

CASE STUDY (CIDCO HOUSING)



FORMING IN BETWEEN POCKETS FOR PARKING ON THE PERIPHERY OF THE CLUSTER.

CASE STUDY (CIDCO HOUSING)



SITE CONTEXT ONE EDGE HAS A MAIN ROAD ON ITS PERIPHERY.



COMMUNITY SPACES

CASE STUDY (CIDCO HOUSING)



VEHICULAR ROAD 6M

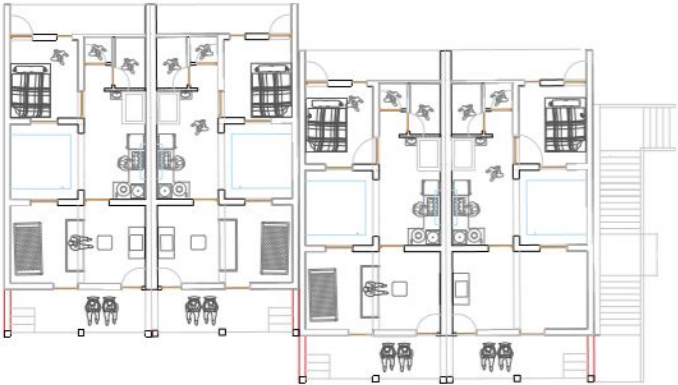


PEDESTRIAN PATHWAYS 3 M

UNIT PLANS



FIRST FLOOR



GROUND FLOOR

SITE PLAN



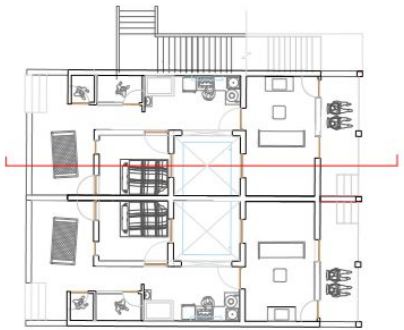
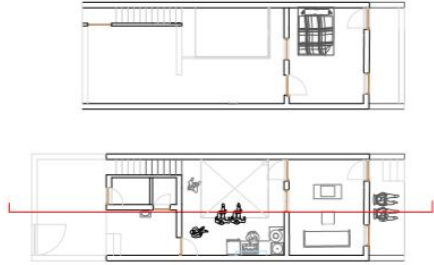
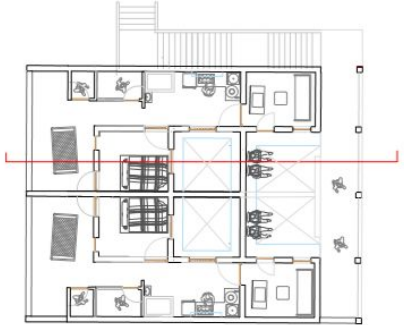
234
235



SITE PLAN



UNIT PROCESS



SITE PLAN



- UNPAVED
- ASPHALT ROAD
- PEDESTRIAN
- FOOTPATHS

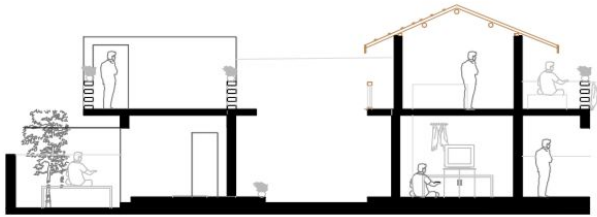
FACTORY

PLAYGROUND

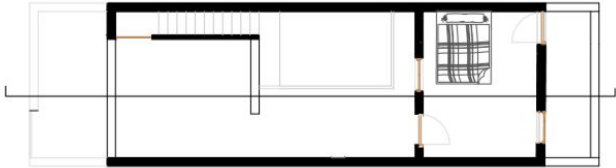
VACCANT LAND BEFORE LAKE EDGE



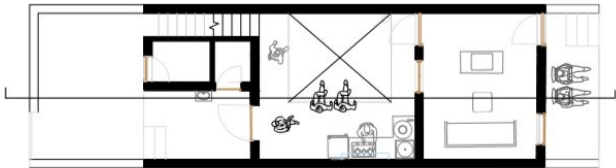
FINAL UNIT DRAWINGS



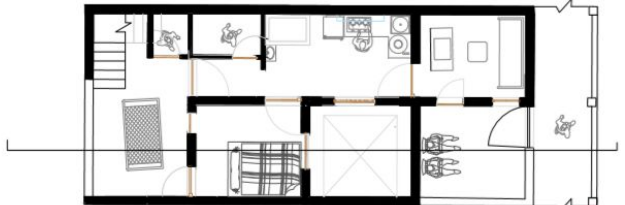
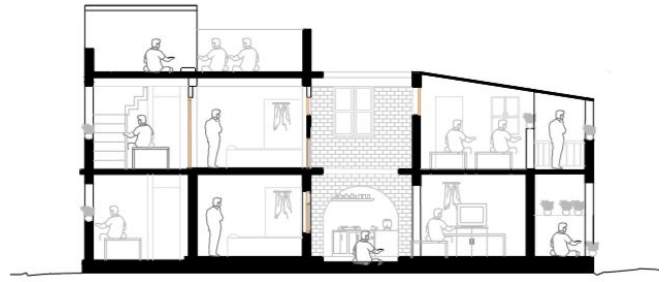
SECTION AA



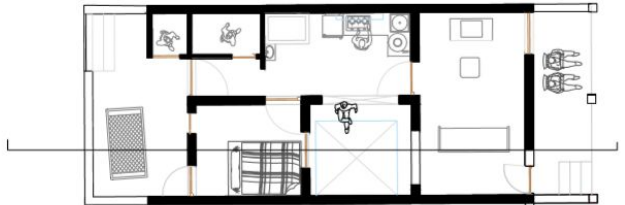
FIRST FLOOR



GROUND FLOOR



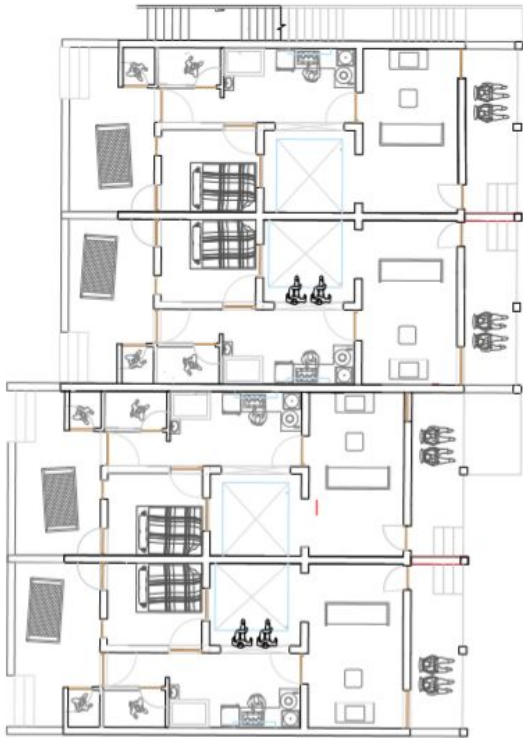
FIRST FLOOR



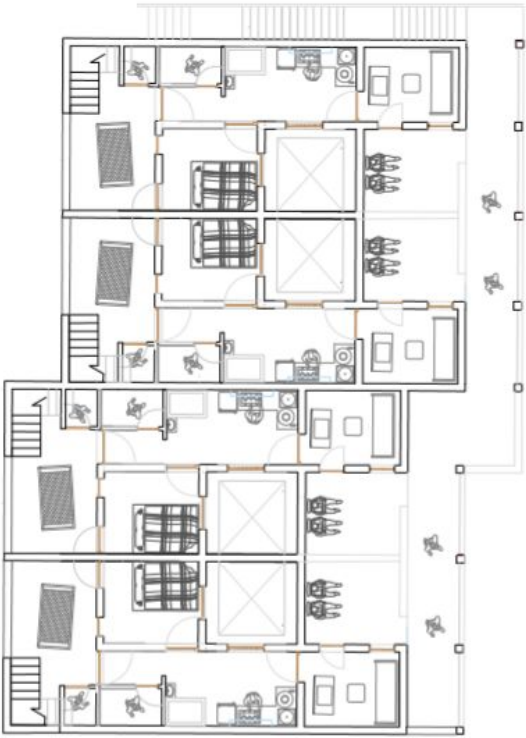
GROUND FLOOR



CLUSTER DRAWINGS



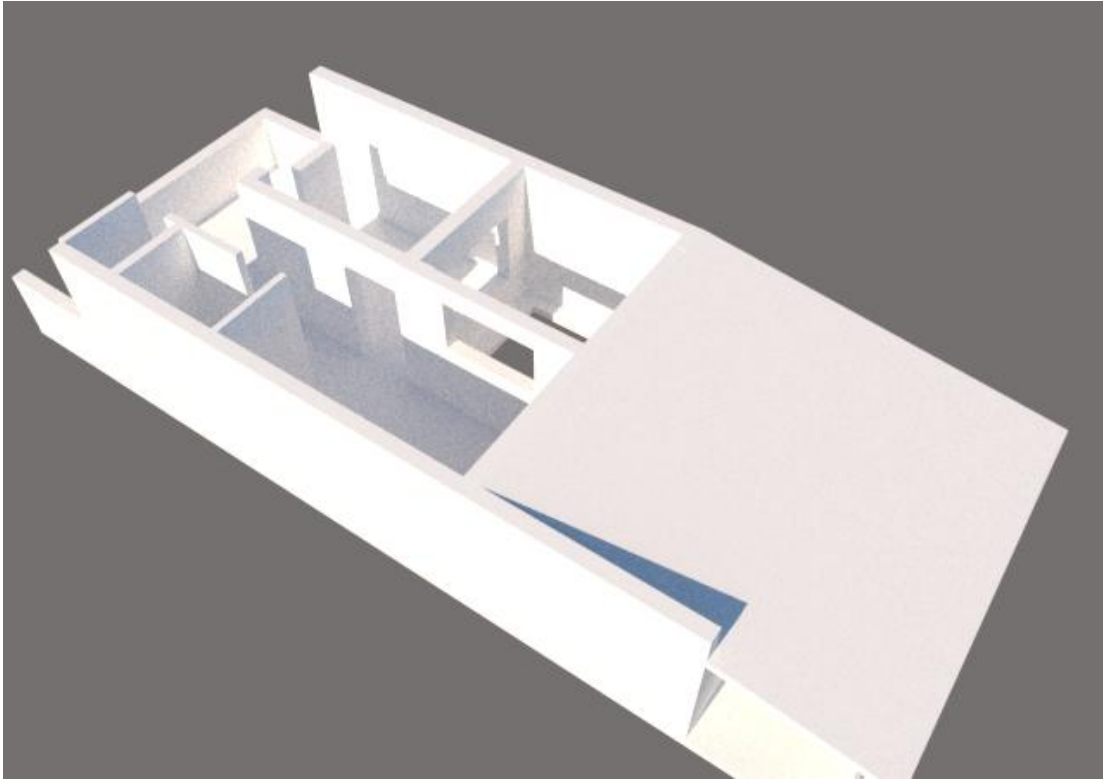
GROUND FLOOR



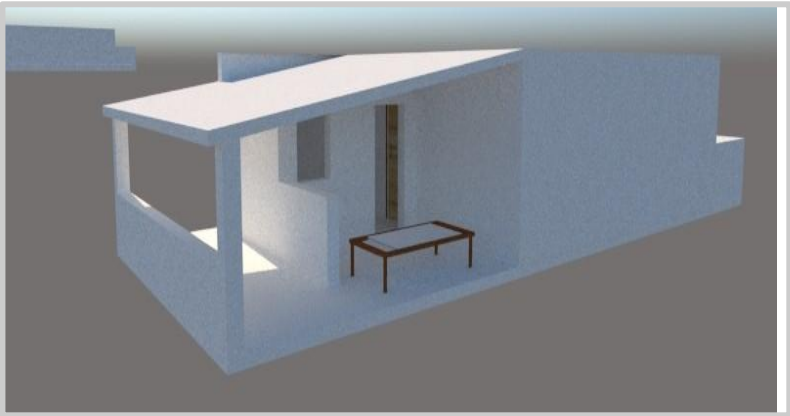
FIRST FLOOR



UNIT MODEL



VIEWS



COVERED TERRACES AND CORRIDORS



SITE PLAN



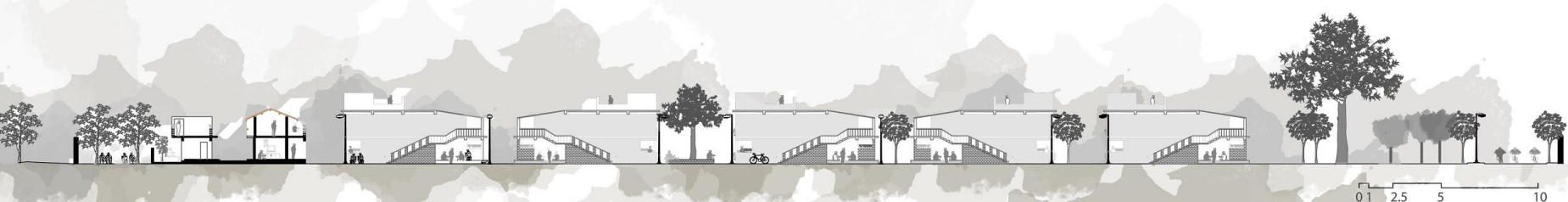
SITE CONTEXT



SITE SECTION



SECTION AA'



SECTION aa'

SITE SECTIONS



SECTION BB'



SECTION CC'