

UKIYO HOUSING

STUDENT HOUSING

ISHIKA SONI
18BAR008



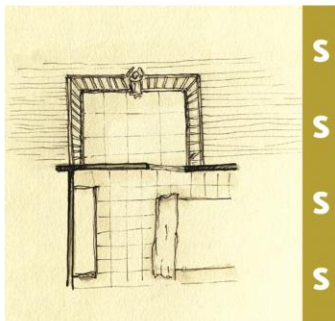
The Pursuit of Happiness



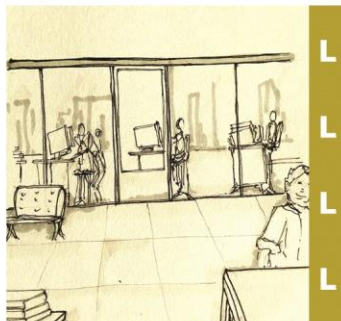
Movie

A struggling salesman takes custody of his son as he's poised to begin a life-changing professional career.

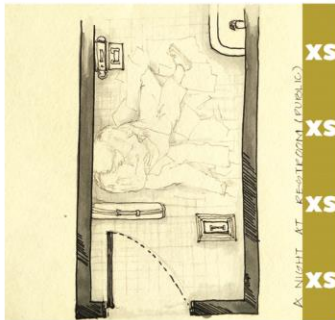
The film use brighter **LIGHTNING** and light colors to show **HAPPINESS** and belief in his future success.



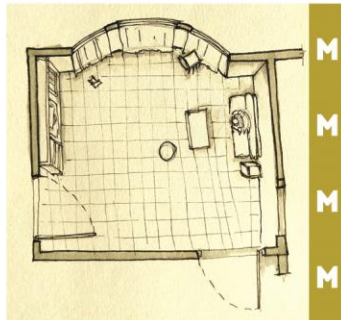
S
S
S
S



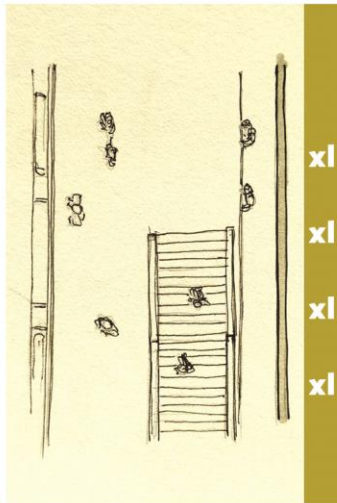
L
L
L
L
L



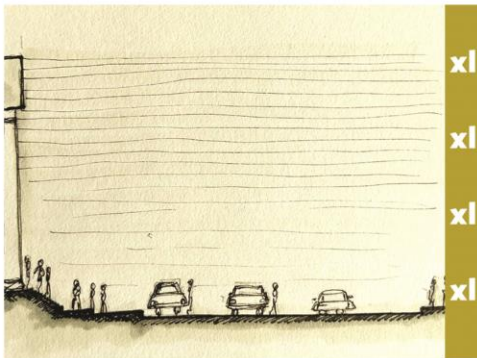
XS
XS
XS
XS



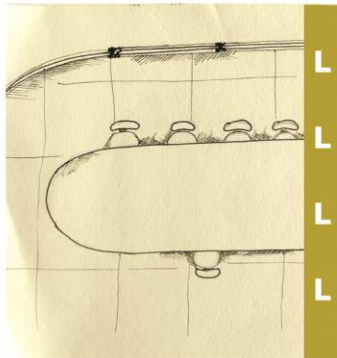
M
M
M
M



xl
xl
xl
xl



xl
xl
xl
xl



L
L
L
L

XS | S | M | L | XL

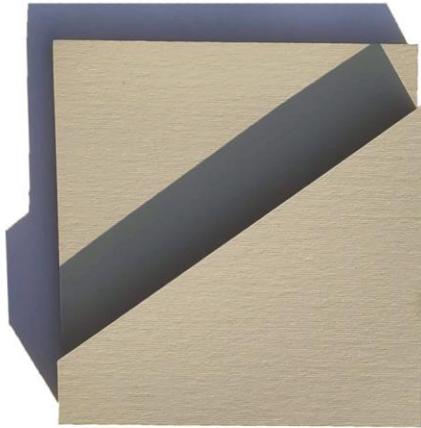
Different scale of spaces are associated with the protagonists in the film. **SCALE OF SPACE** changes with different type of activities performed in a day.



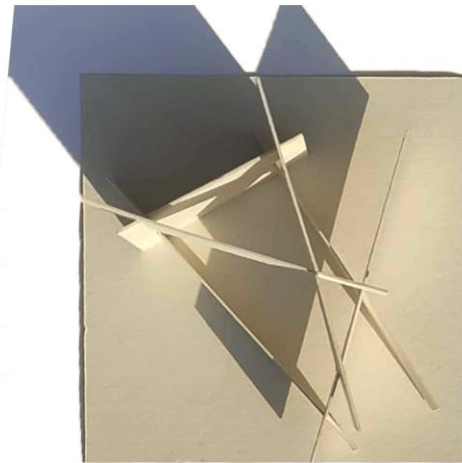
SITE ANALYSIS



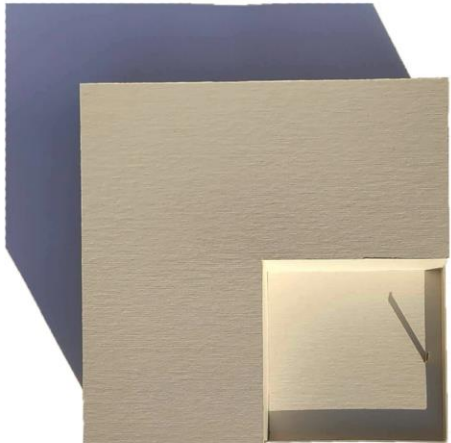
**POCKETS OF OPEN SPACES
BRINGS LIFE TO VILLAGE**, how
these pockets becomes the
PLACES OF INTERACTION



MINIMALIST (characterstics)



COMPLEXITY (lifestyle)



POSITIVE/NEGATIVE (spacial)



FRAGMENTED (site)

Abstract Model

Abstraction of charecters lifestyles, chracterstics and our site helped in deriving the **SPACE CHARACTER RELATIONSHIP.**

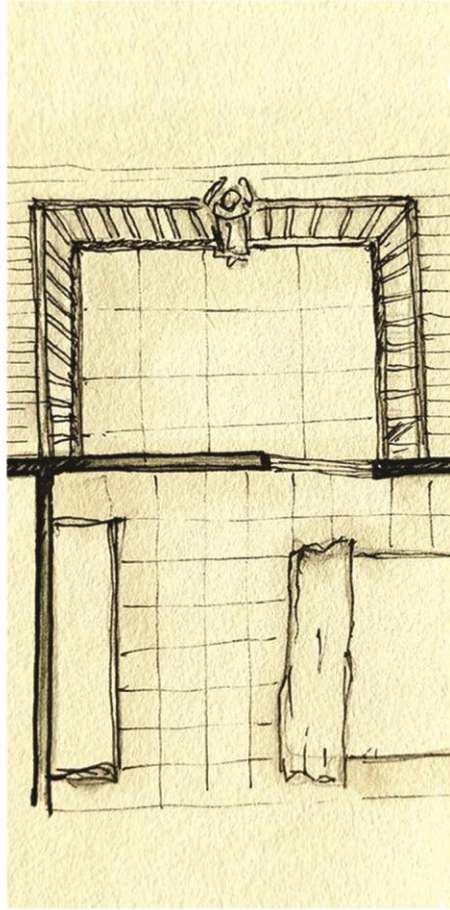
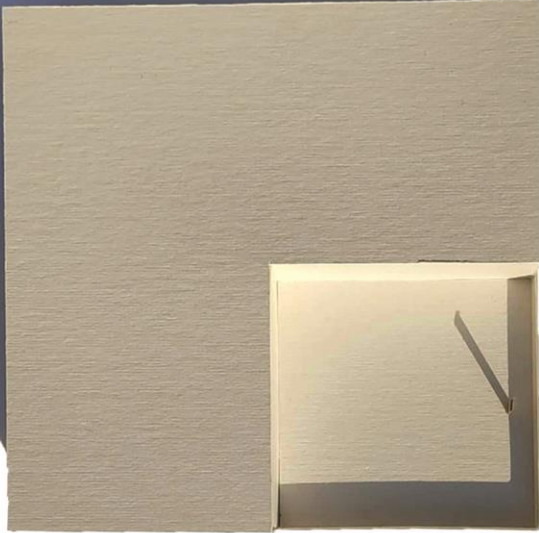


<https://drive.google.com/drive/u/1/folders/1hOnRuJBLuv7dWEMfqZKuvvgMm6Kxq3971>



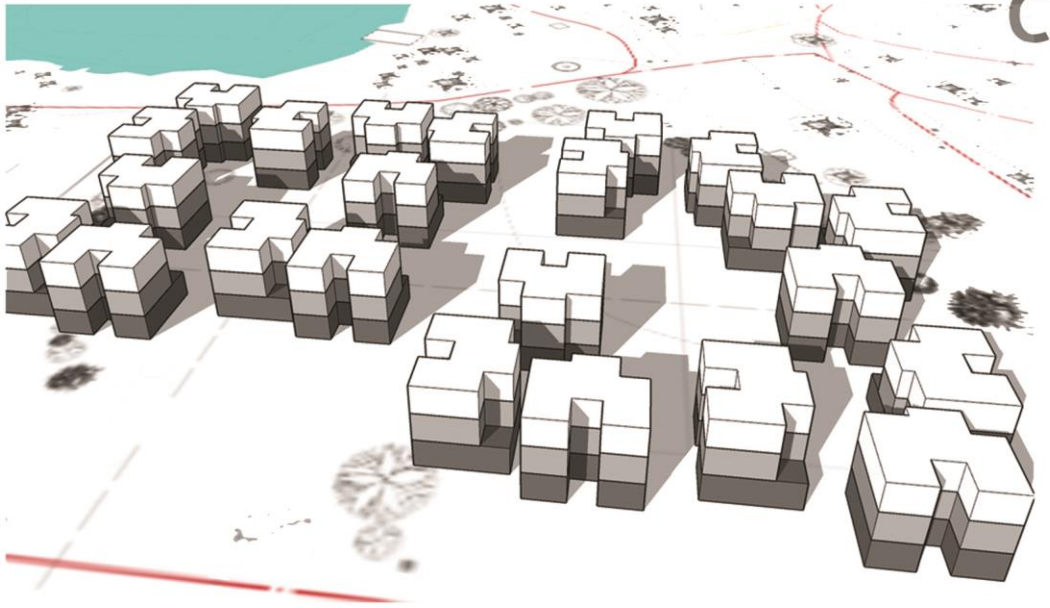
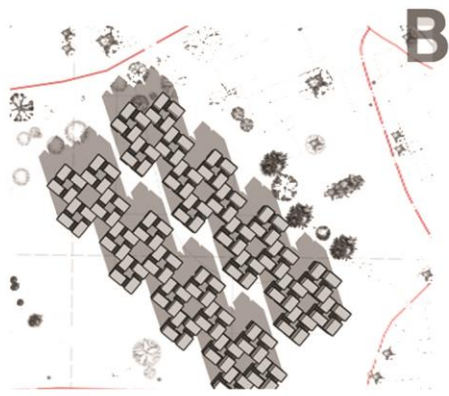
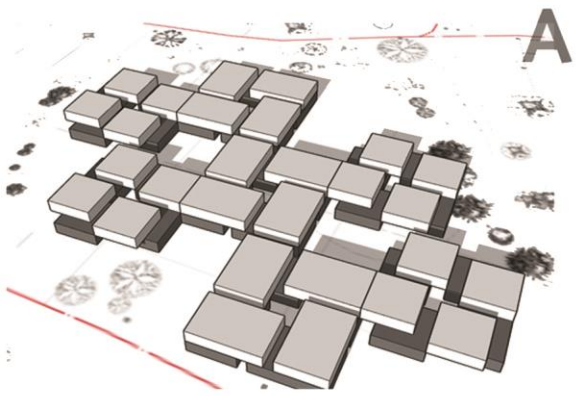
BRIEF TRAILER

HAPPINESS in **LIFE** is not something extra ordinary maybe its just about spending time with the people you love, doing things which are ordinary, **CREATING MOMENTS** which are etched as memories in our heart. Creating spaces such that it connects us to **NATURE**, spaces such that these becomes our **ESCAPE ZONES**.



CONCEPT

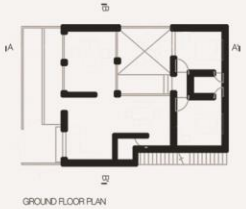
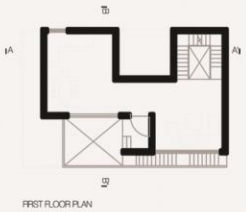
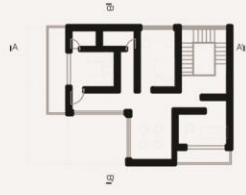
Positive/Negative in the form of spaces that is **INSIDE/OUTSIDE** Spaces be sut that they create a lining between indoor and the nature, by which one can have **NATURE WITHIN THE HOUSE.**



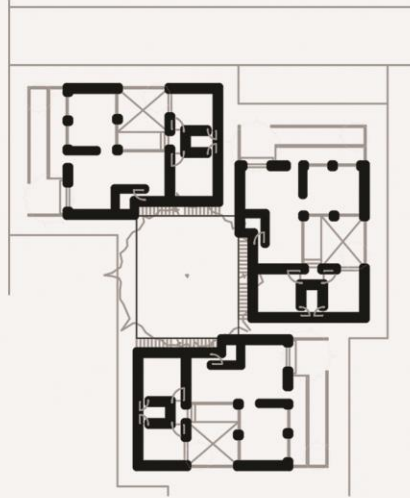
Mass-Void

**HIERARCHY OF OPEN SPACES
WITH HIERARCHY OF PRIVACY.**

Creating open courts for
interaction. Maintaining the
concept of **INSIDE/OUTSIDE.**



SITE PLAN GREY TONE DIAGRAM



CLUSTER PLAN

DRAWINGS
(Mid-sem Jury)

QUESTIONS TO BE ANSWERED

How is your housing project meant for students?

Do the community spaces get segregated between the families and students?

What is the routine for students?

How do the lifestyles of students differ from that of families?

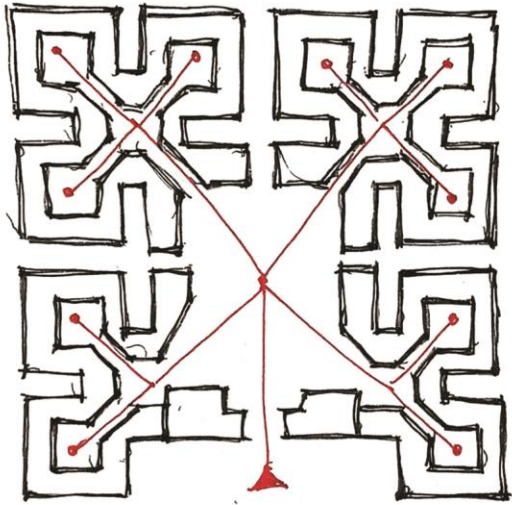
HCP HOUSE



AHMEDABAD COMMONS

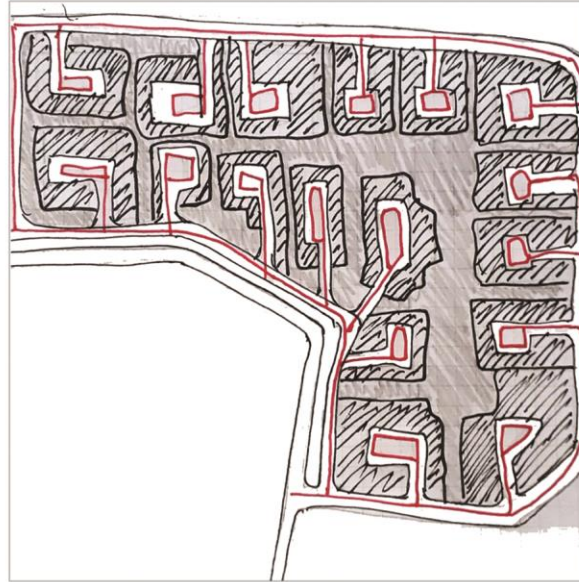
Relationship between inside and outside comes out really good. And is also a good example of how light have an imortant role in stating the fuction of the space.





Titan township (Charles Correa)

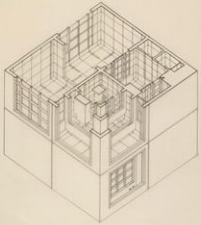
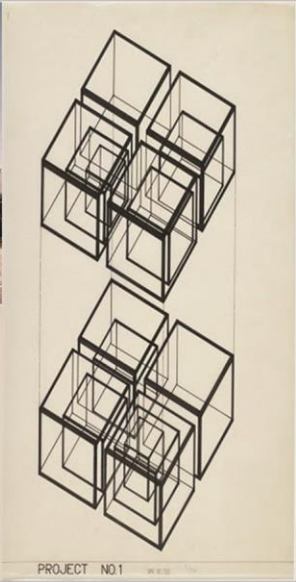
Hierarchy of courtyards



Asian games village (Raj Rewal)

Parking / Vehicular road

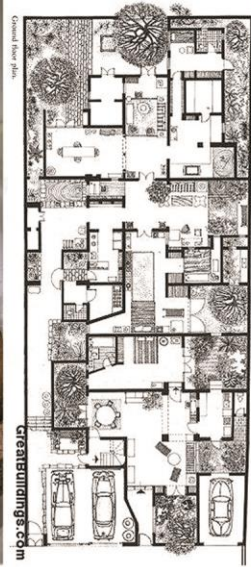
Case Study



PROJECT NO.1

Todoroki Residence

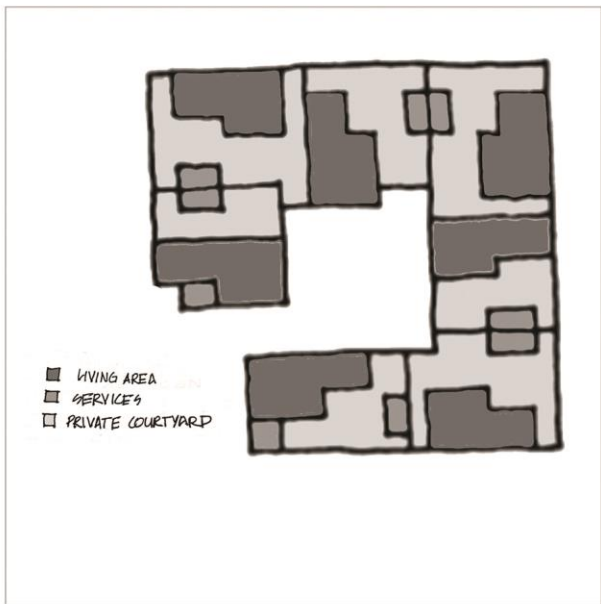
House within a house



Bawa house

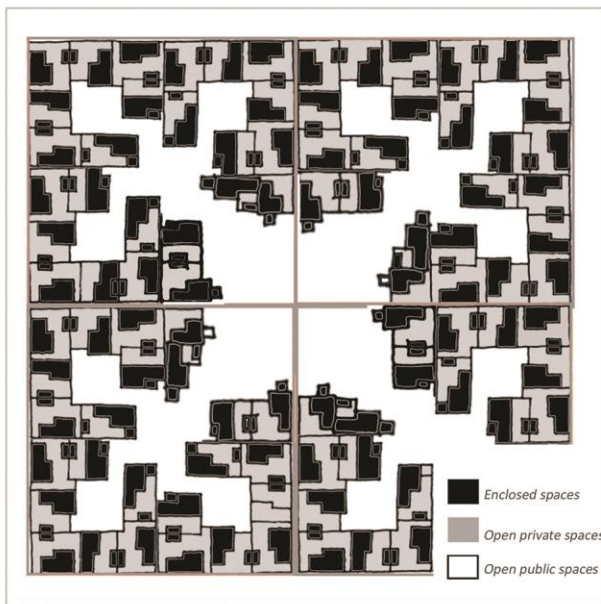
Nature within a house

Case Study



Belapur housing

Unit organisation

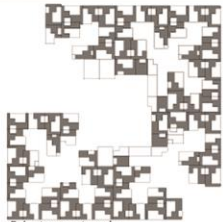


Belapur housing.

Organisation and volumes

Case Study

BELAPUR HOUSING



Private courtyards



Courtyards in the cluster (8x8m)



Courtyard between the clusters (12x12m)



Maidan, largest public space (20x20m)

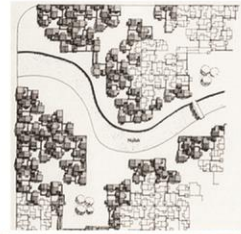
Observation of traditional Indian settlements, suggested that this intervention should be developed using a spatial hierarchy which, starting from the private world of the individual home and passing through a series of common areas, would reach the largest public space, the Maidan. Belapur's geometry is therefore a direct interpretation of this synthesis.

Belapur housing.

Open space character.



Belapur housing.



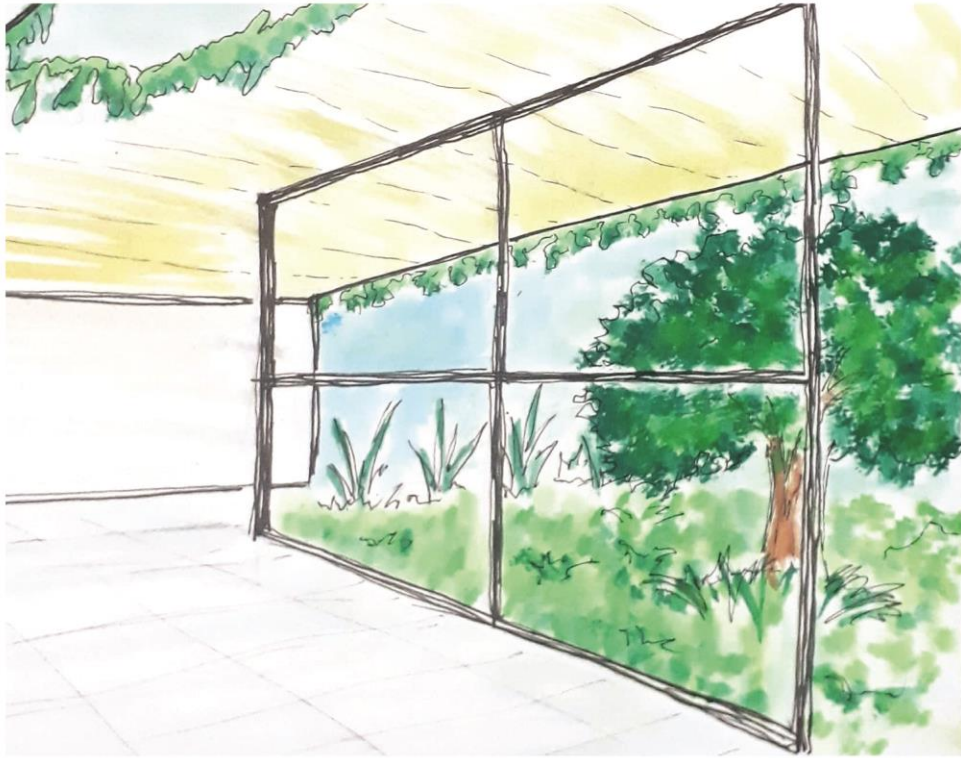
Context

Case Study

BELAPUR HOUSING

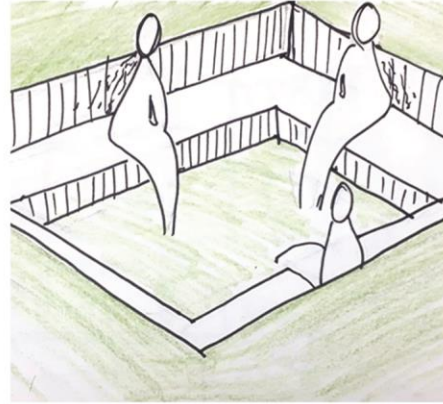
Ukiyo Housing

(Student housing)

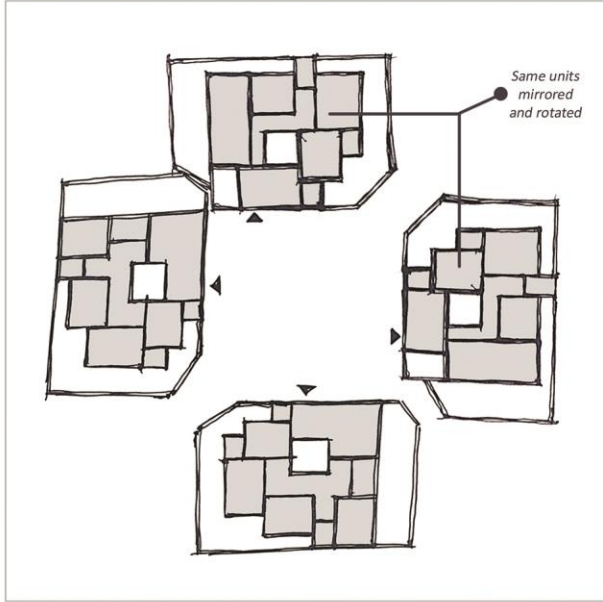


INTENT

Bringing nature within the house. An healthy interactive housing.

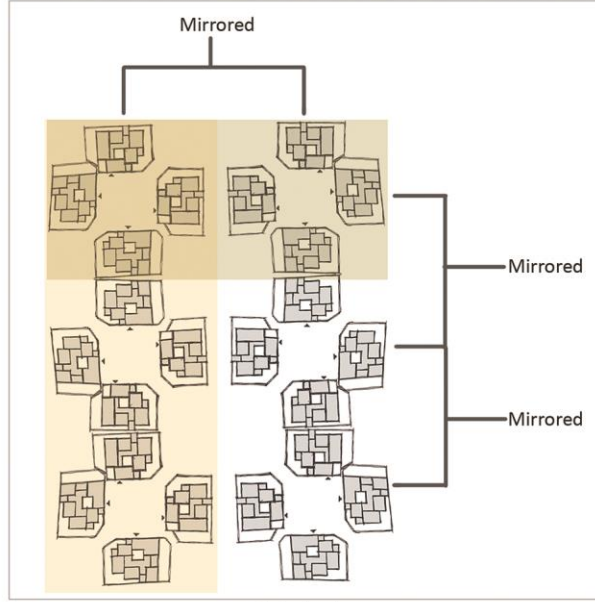


UKIYO
HOUSING



Student housing

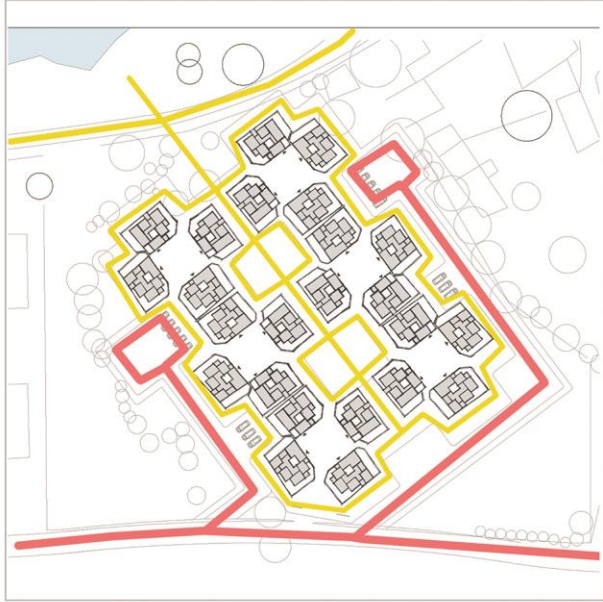
Cluster/Intent(units forming court)



Student housing

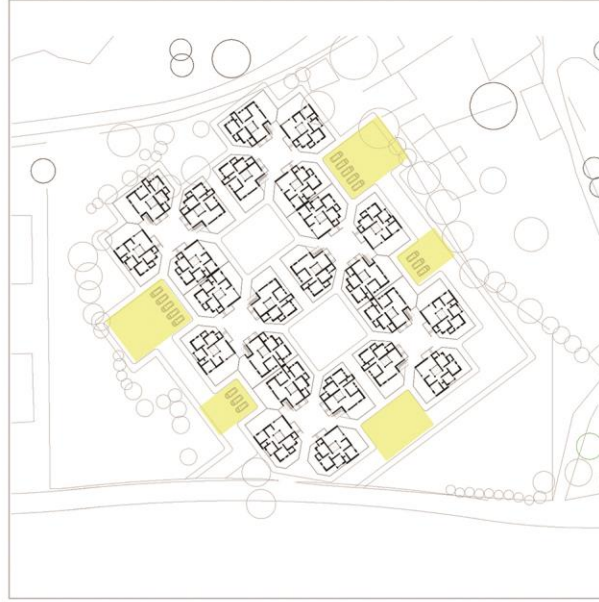
Site plan/Intent (Clusters forming bigger court)

UKIYO HOUSING



Student housing

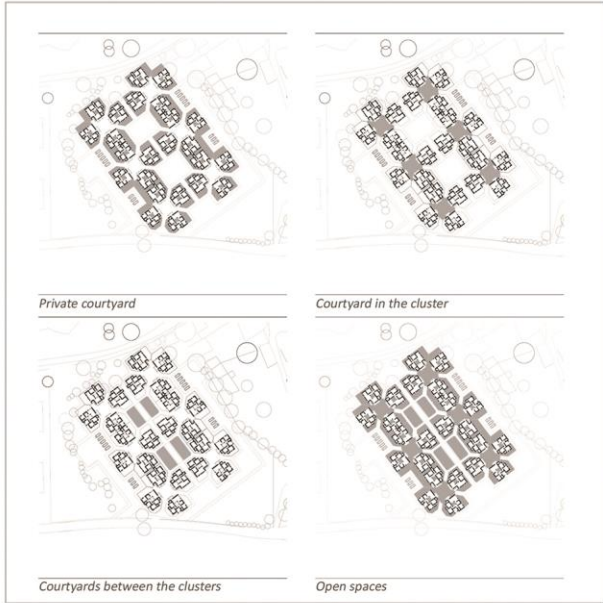
Pedestrian and vehicular movement



Students housing.

Parking

UKIYO
HOUSING



Private courtyard

Courtyard in the cluster

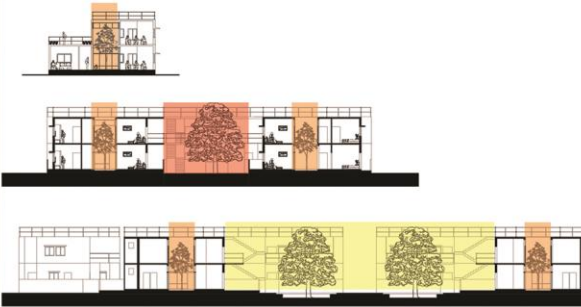
Courtyards between the clusters

Open spaces

Students housing.

Heirarchy of open spaces

Heirarchy in scale of courtyards shows heirarchy in privacy



Students housing.

Heirarchy of courtyards

UKIYO
HOUSING



Students housing.

Context



Enterece to cluster

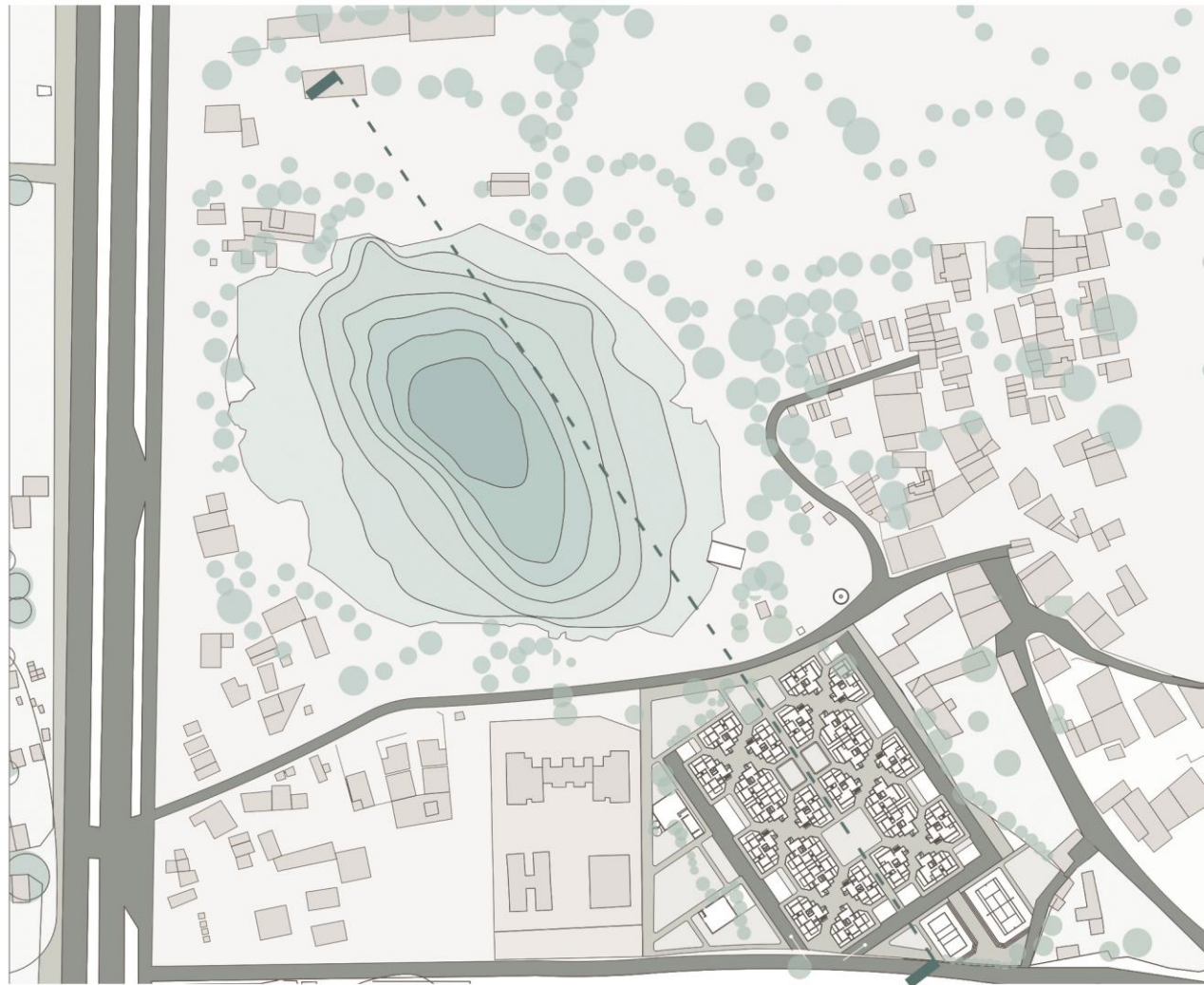


Paved central courtyard

Students housing.

Character of space(Hardscape and landscape)

UKIYO
HOUSING

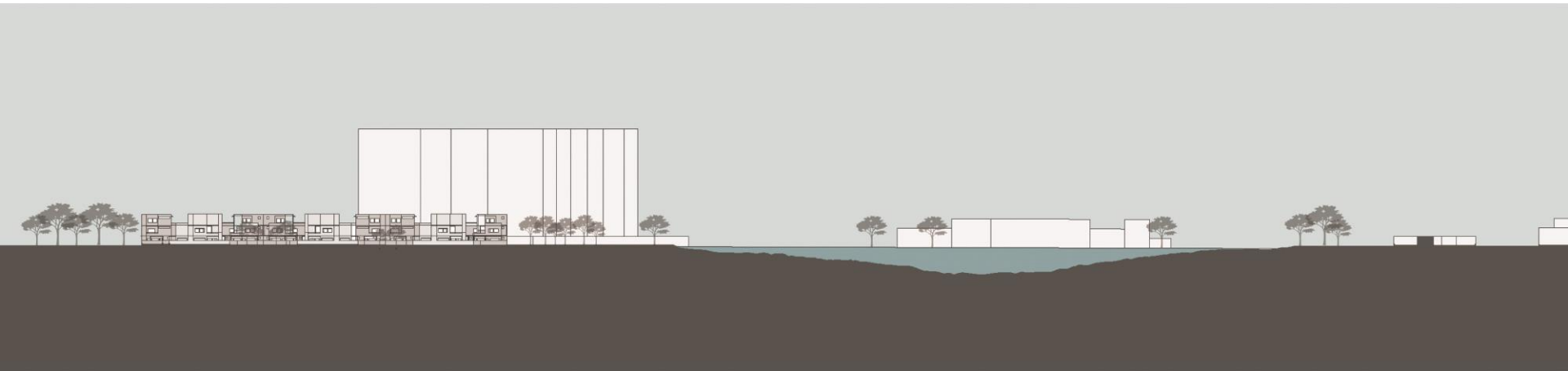


Site Plan

(Context)

Units are placed in a way that the housing creates a spine that opens onto lake.
Low rise housing is preferred so as to blend with the fabric of village.







Site Plan

Units are placed in a way that the central spine divides the students housing and housing for Ahmedabad people, at the same time the courtyard along the central spine unites the two categories of users.

0 8 16 32 64





Site Plan

(Pedestrian Path)





Site Plan

(Vehicular Road)





Site Plan

(Section lines)



Site Sections



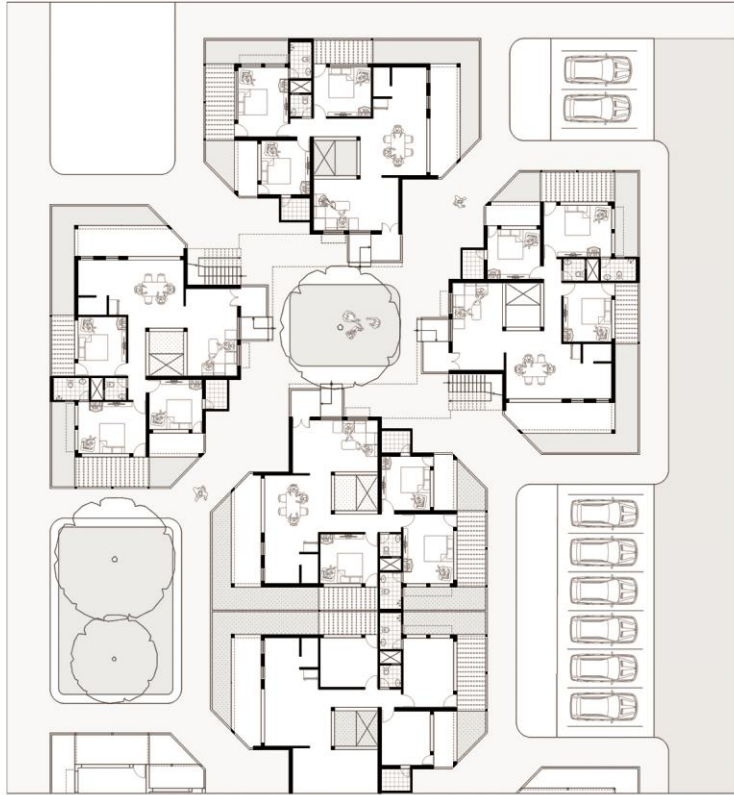


STUDENT'S CLUSTER

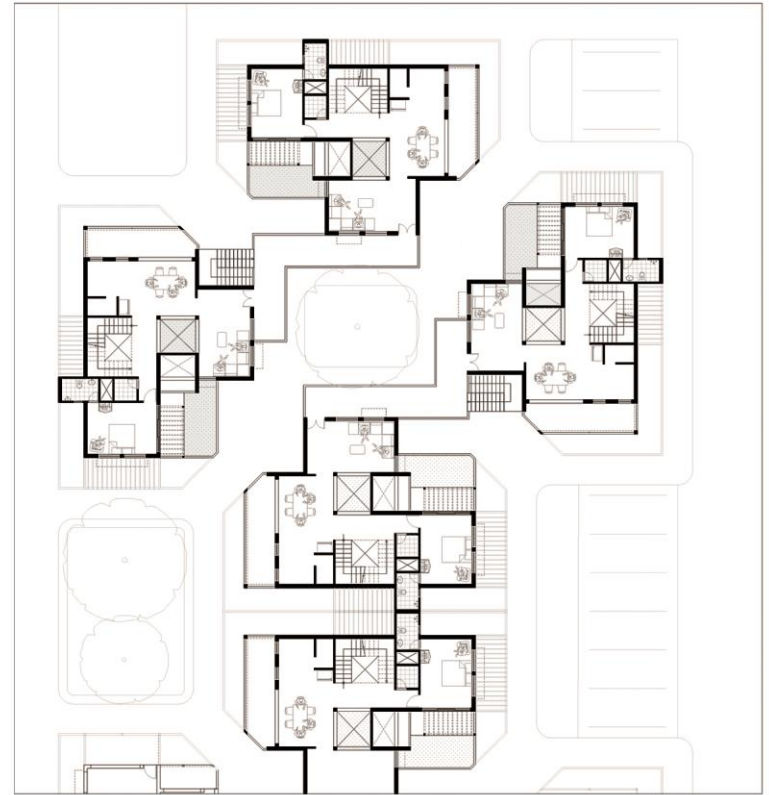
STUDENT'S CLUSTER



Family's cluster

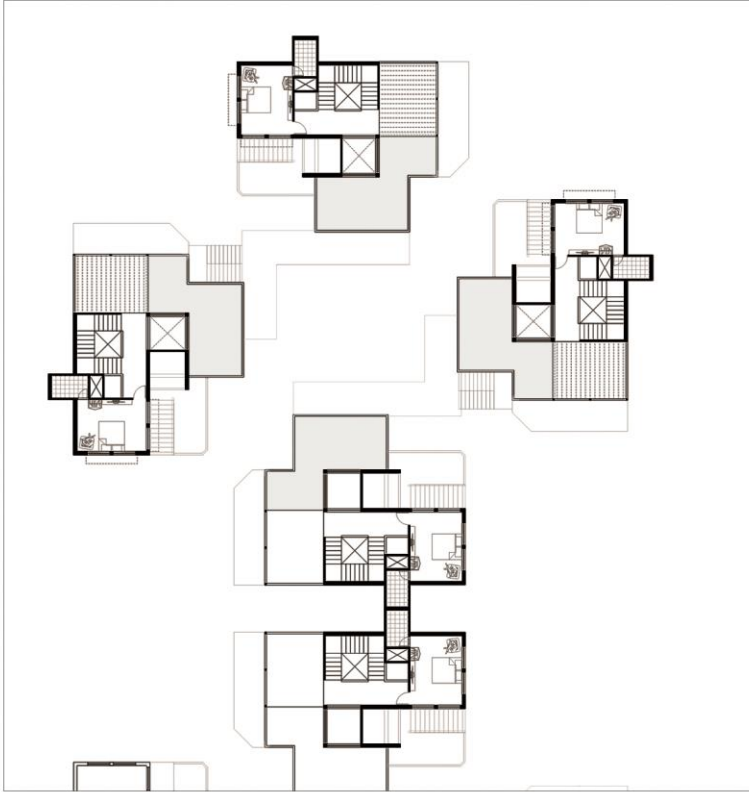


Ground floor CLuster plan



First floor CLuster plan

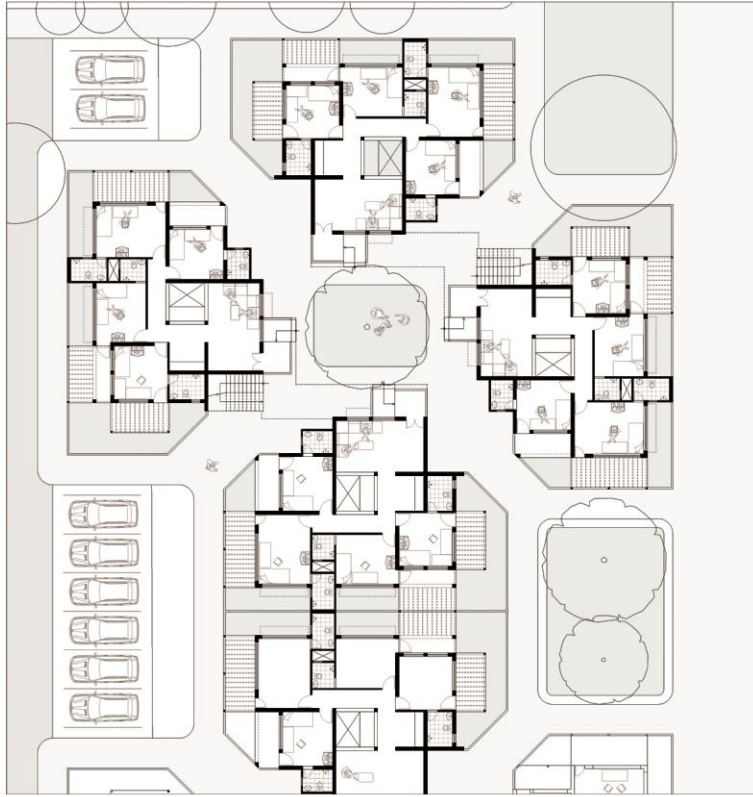




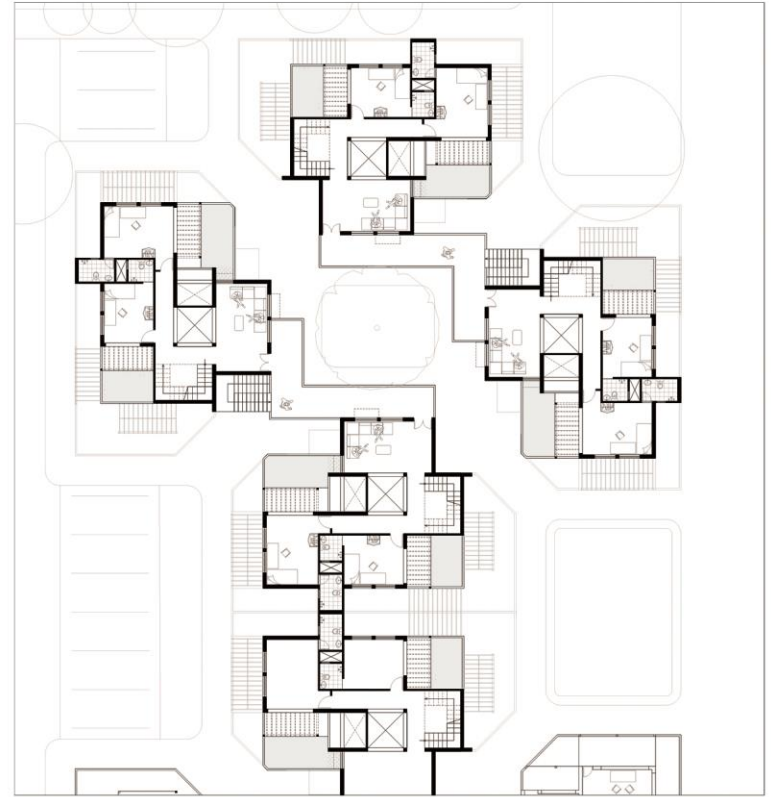
Second floor CLuster plan



Student's cluster

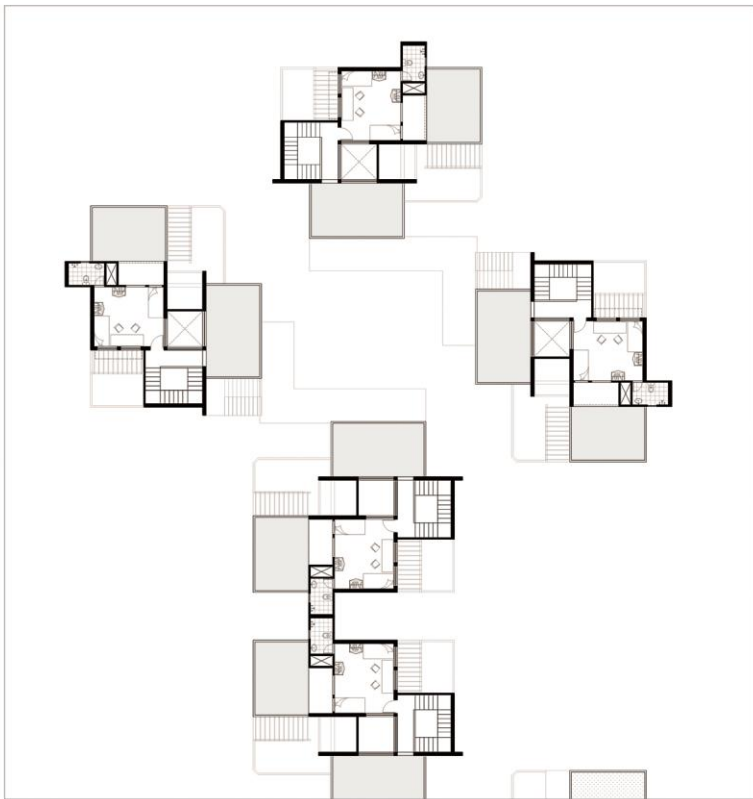


Ground floor CLuster plan



First floor CLuster plan



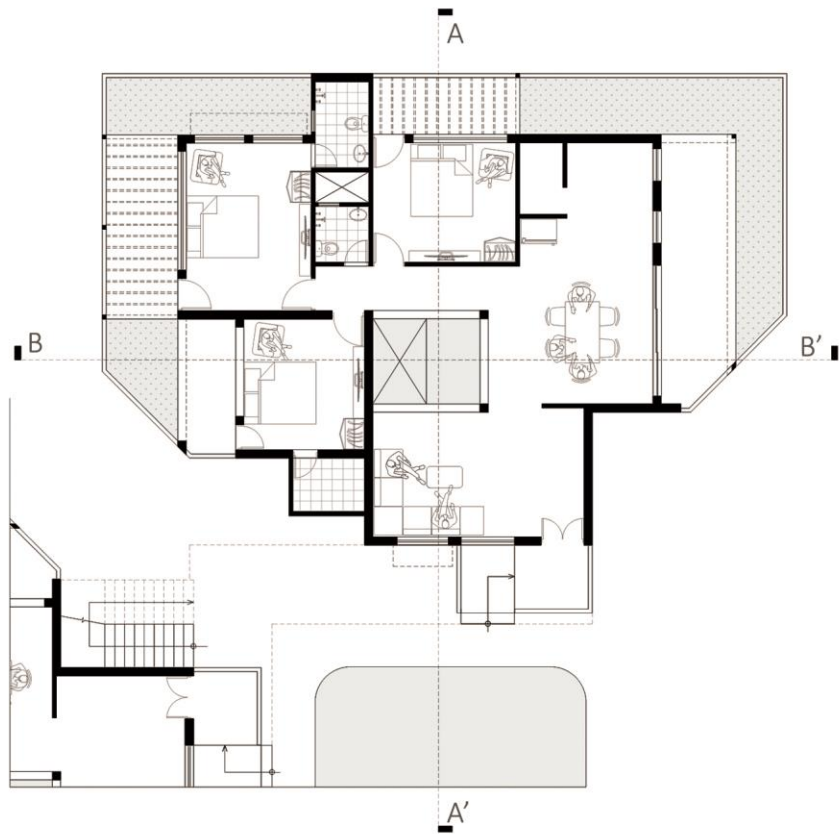


Second floor CLuster plan

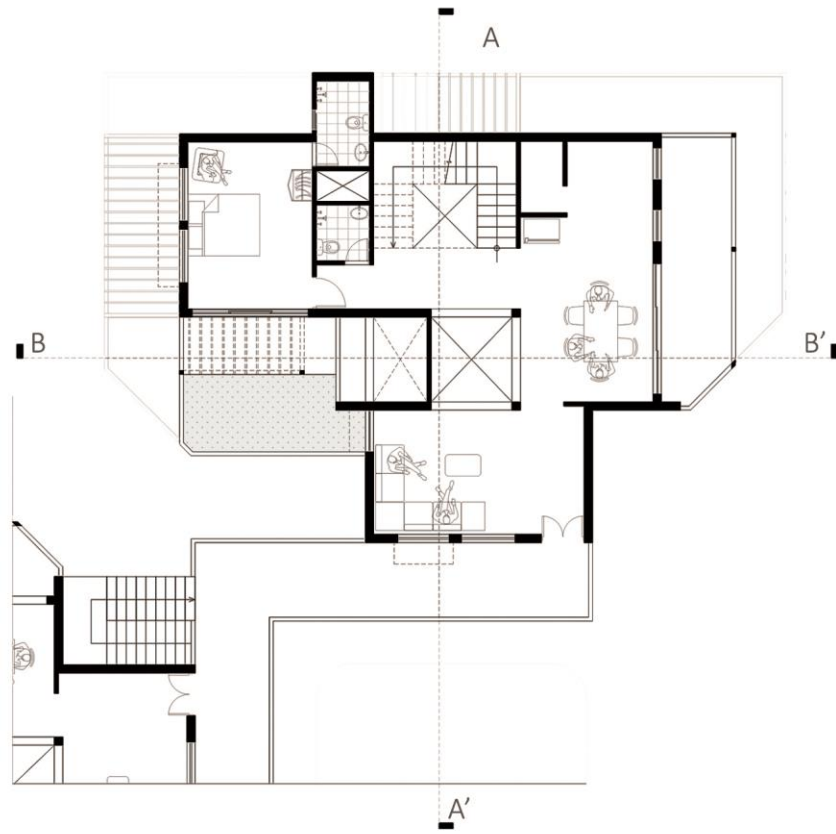


Family's Block Floor Plans



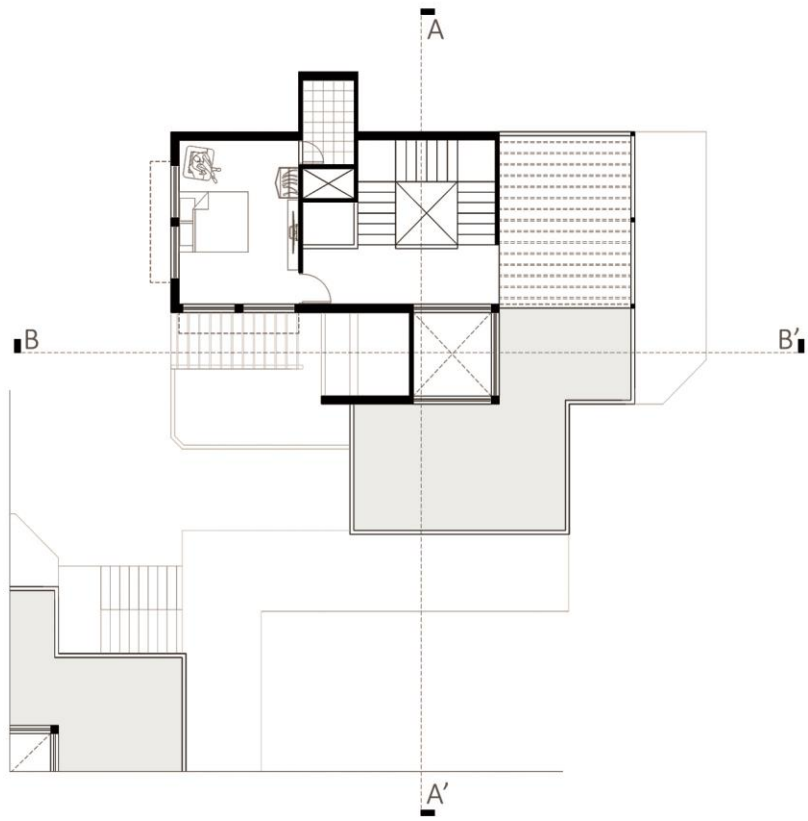


Ground floor plan (Unit type A)

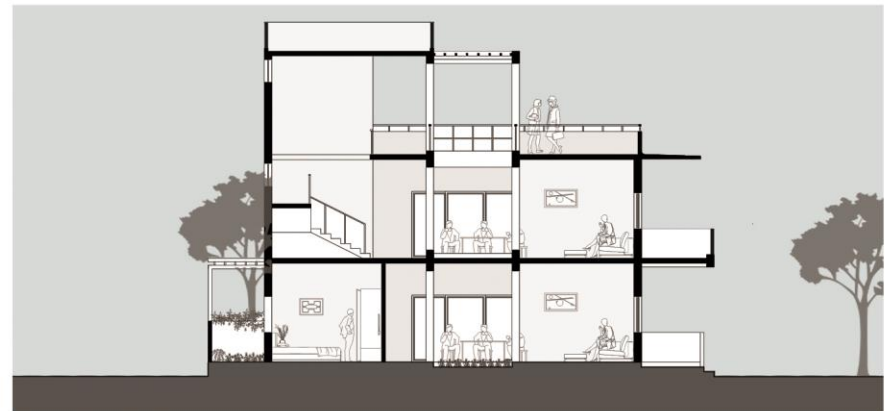


First floor plan (Unit type B)

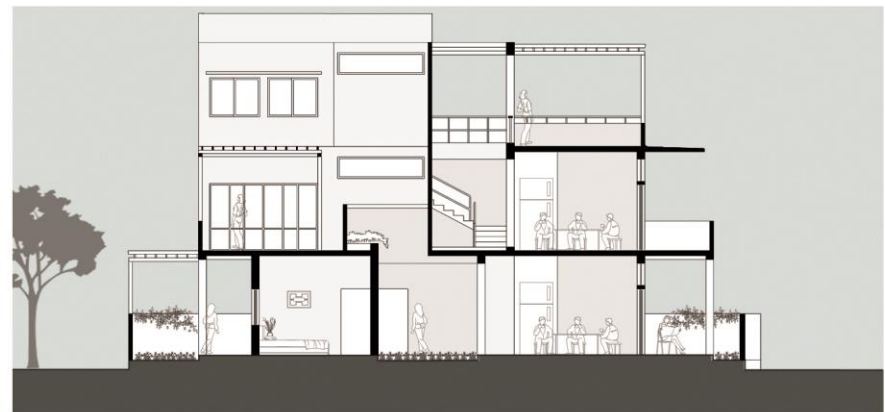




Second floor plan (Unit type B)

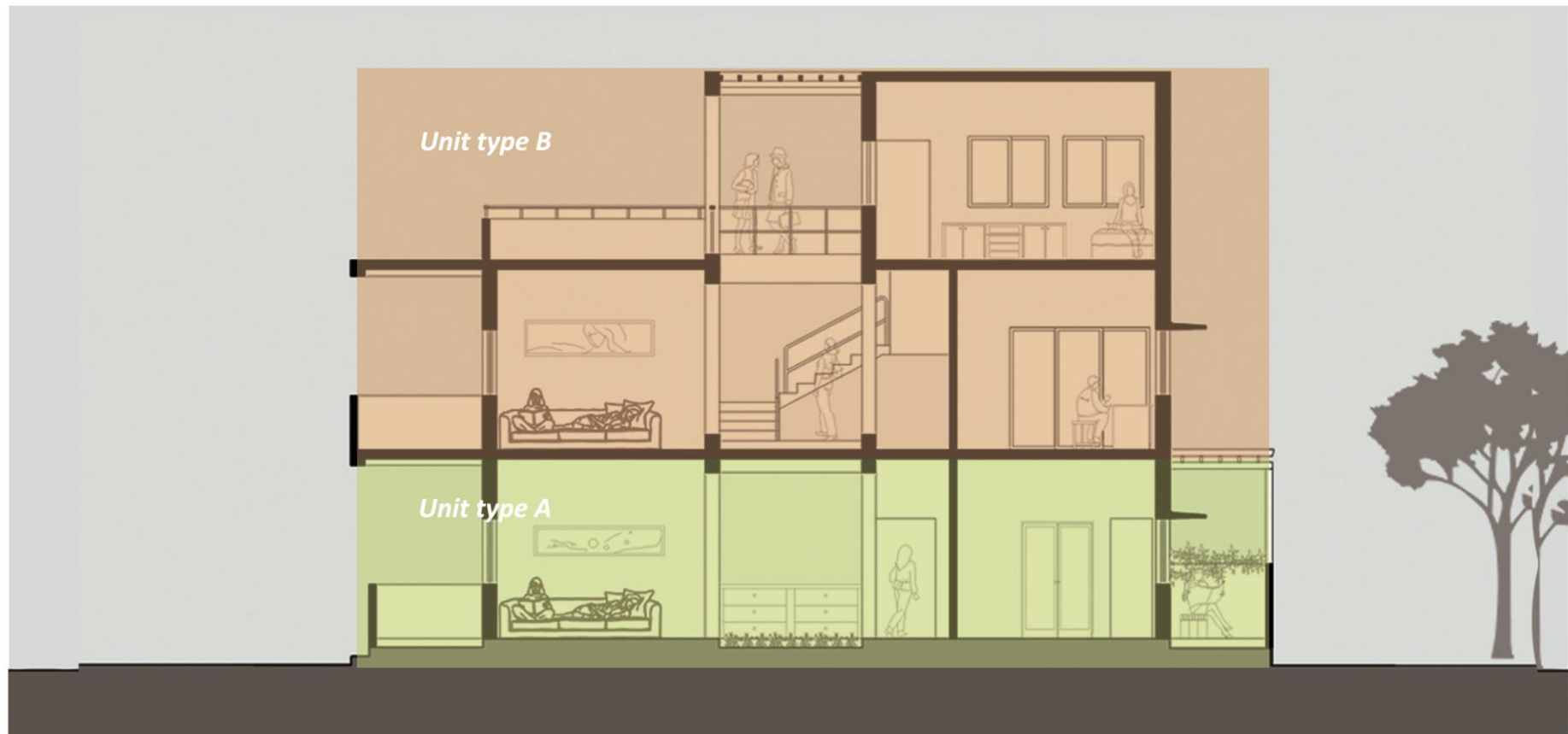


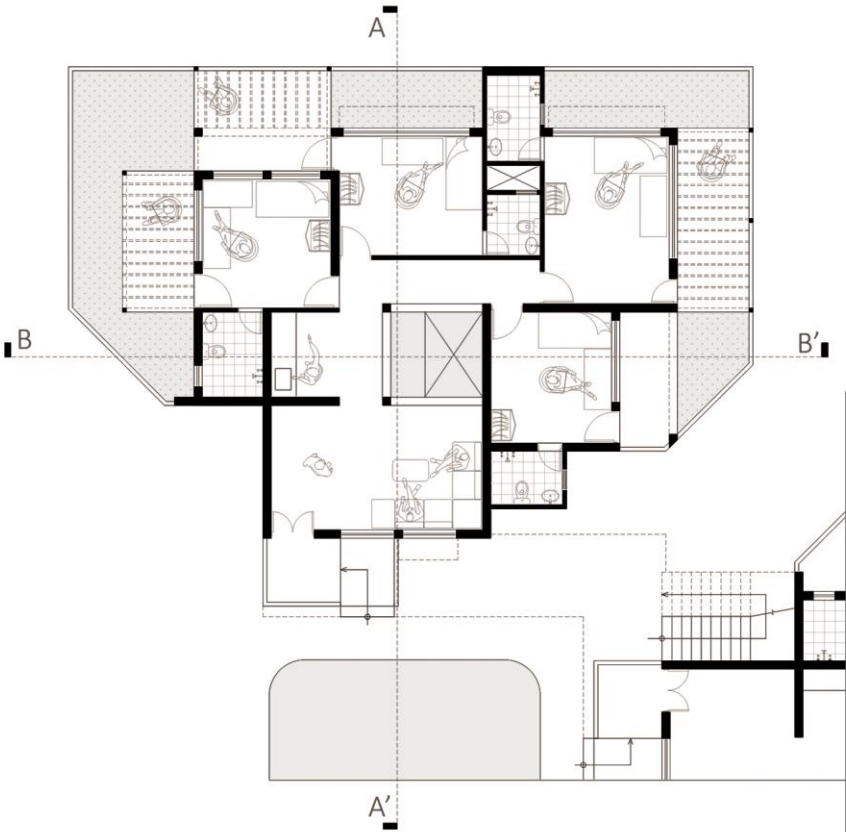
(Section AA')



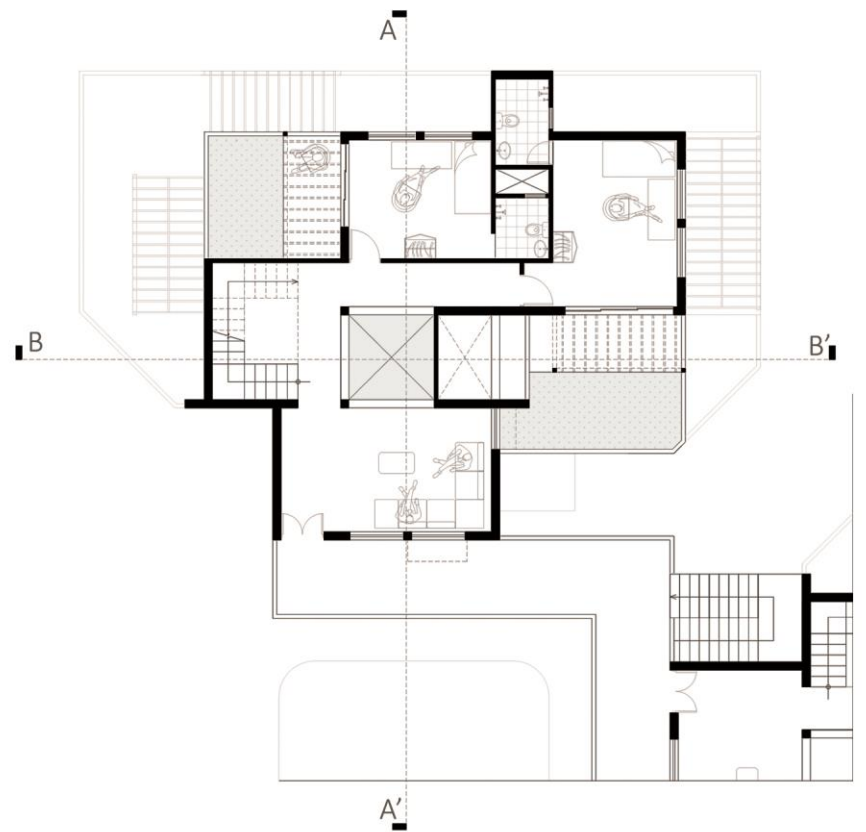
(Section BB')

Student's Block Floor Plans

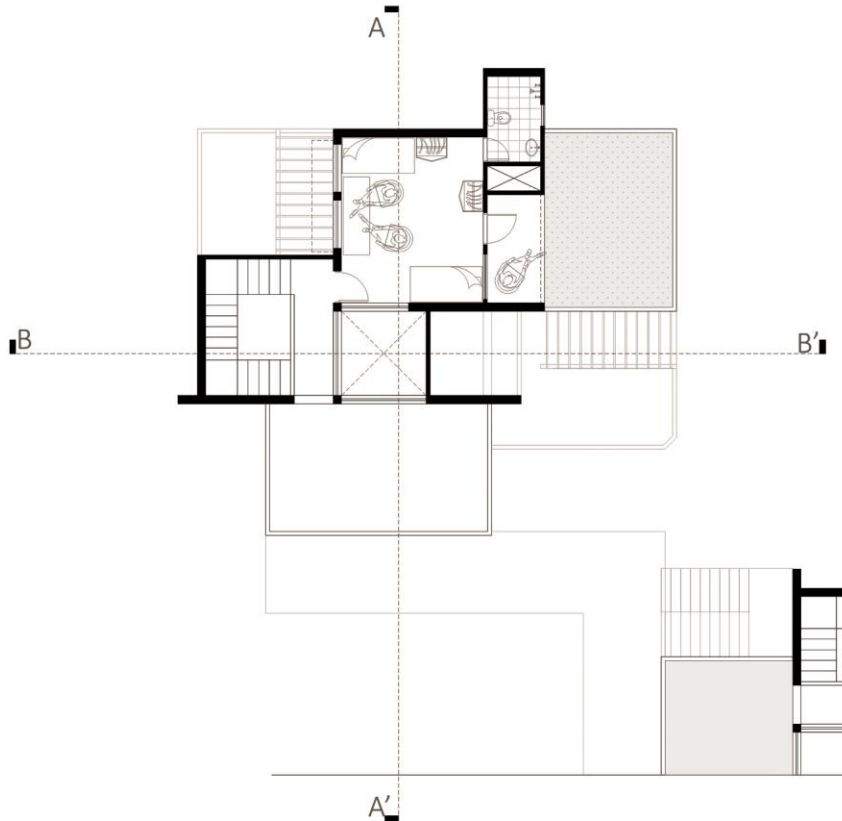




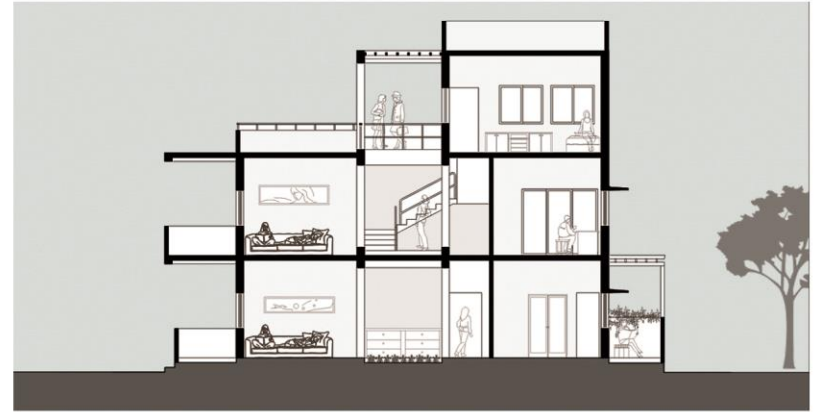
Ground floor plan (Unit type A)



First floor plan (Unit type B)



Second floor plan (Unit type B)



(Section AA')



(Section BB')

Common courtyard character



Play courts



Courtyard in the cluster

