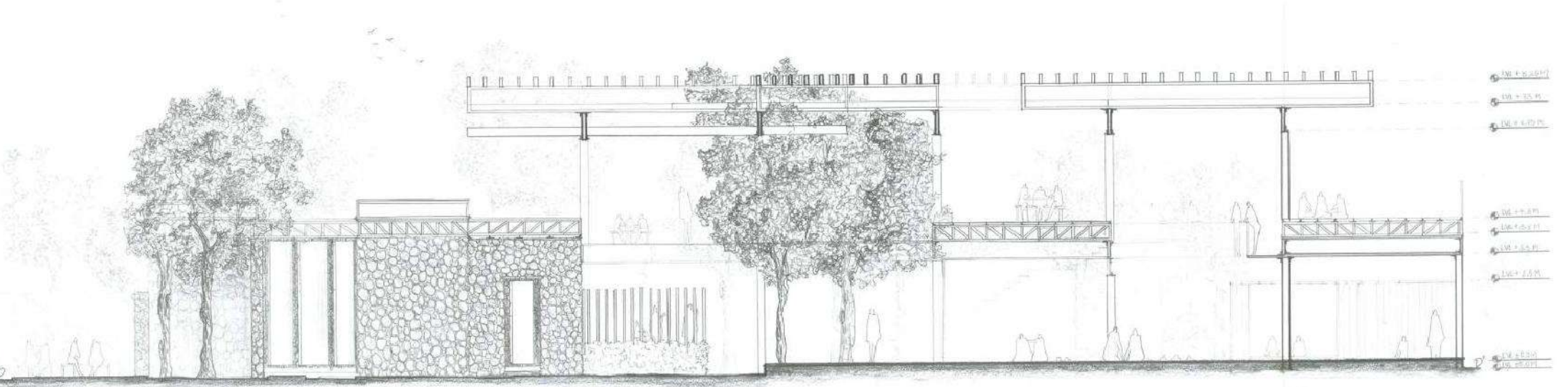


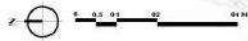
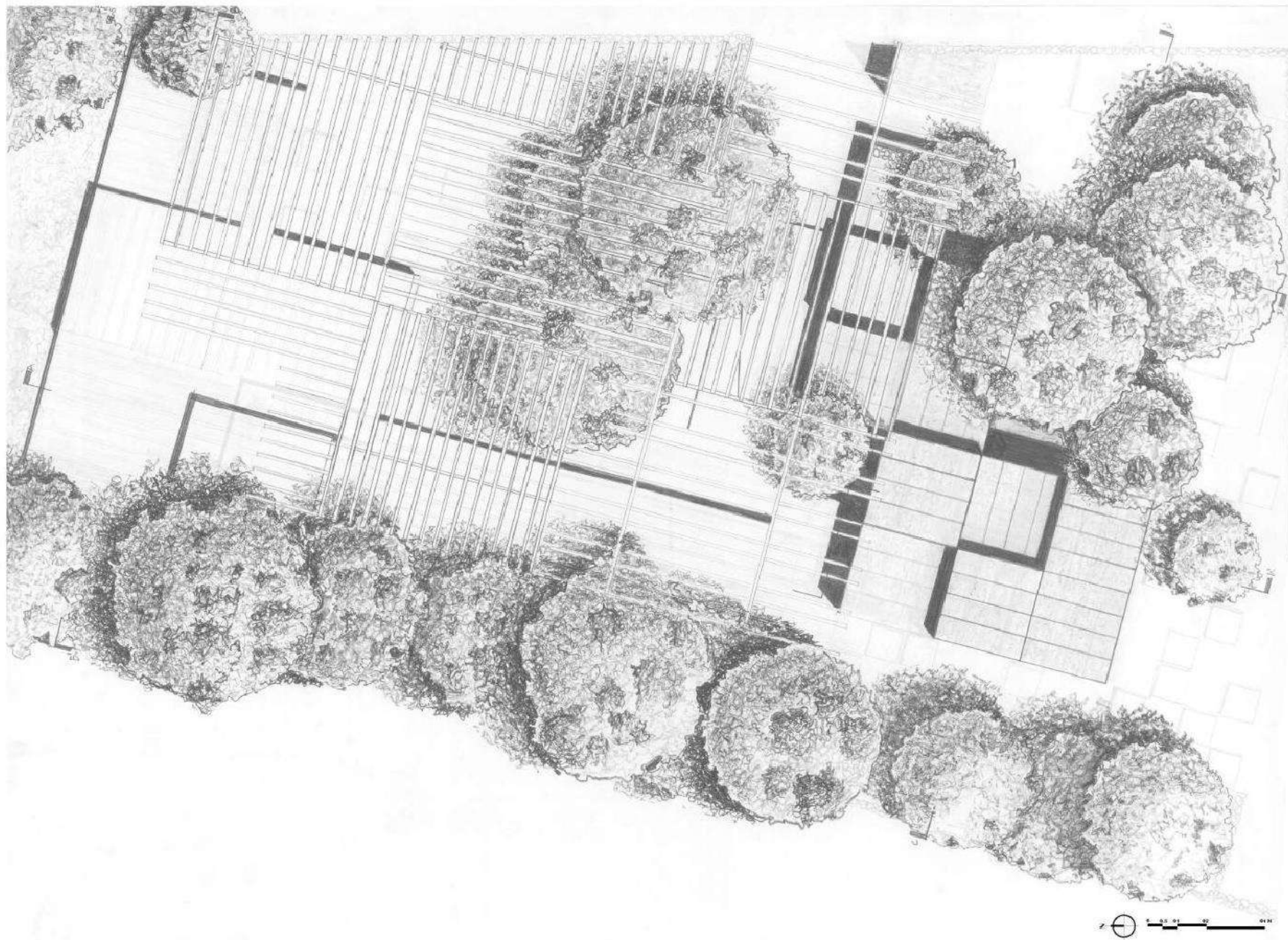
LVL +8.15M  
LVL +3.5M  
LVL +3.75M  
LVL +5.5M  
LVL +4.0M  
LVL +4.0M  
LVL +3.5M  
LVL +3.5M

LVL +0.0M  
LVL -0.45M

SECTION A-A



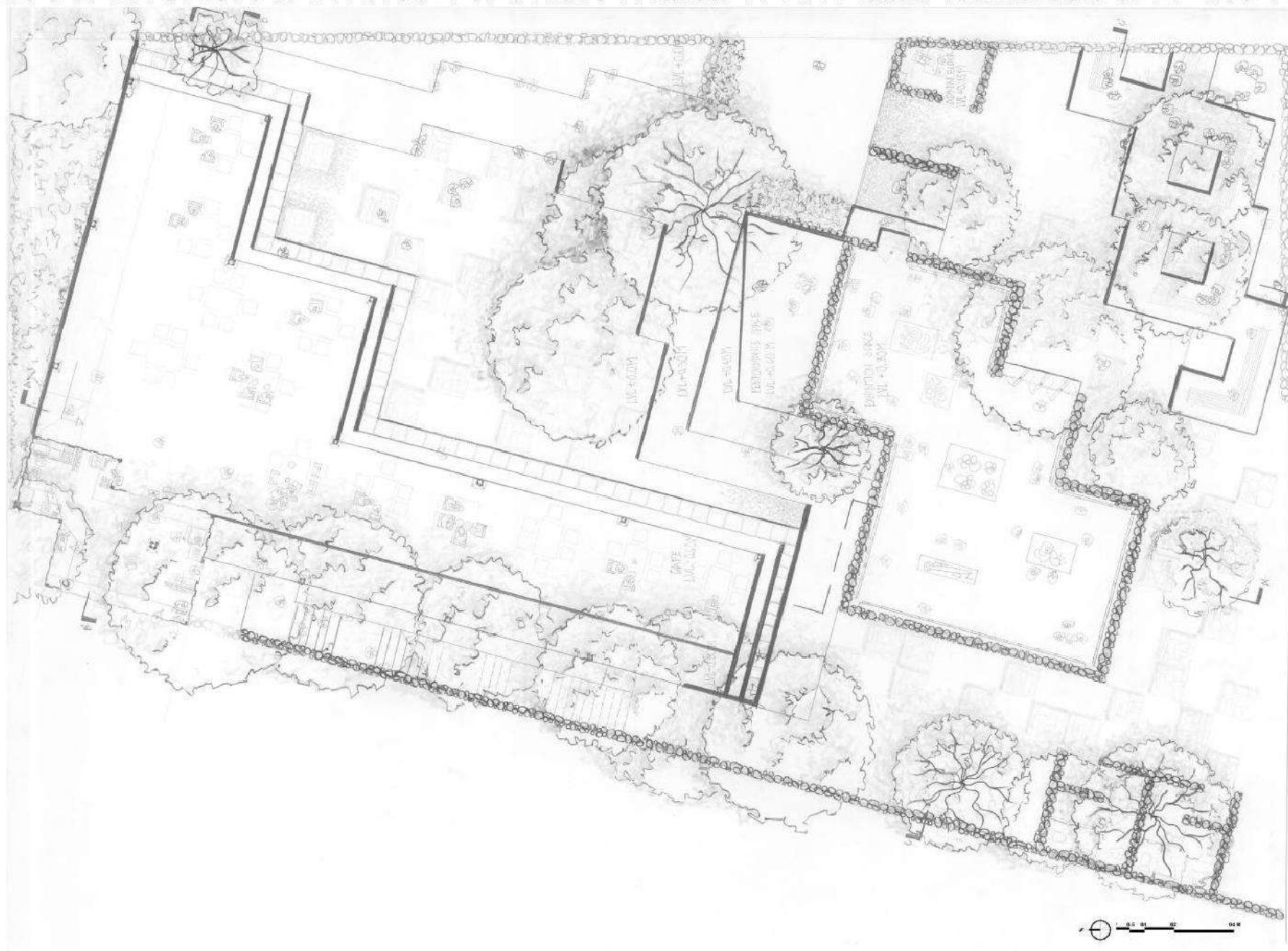




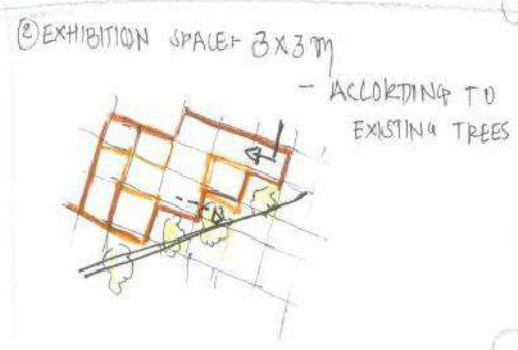
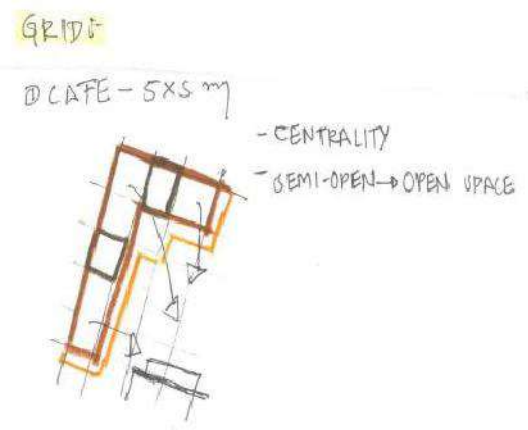
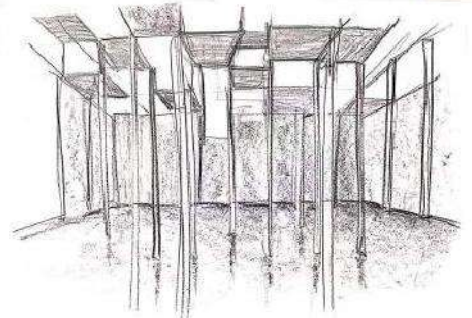
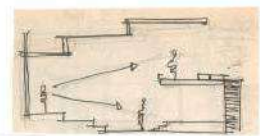
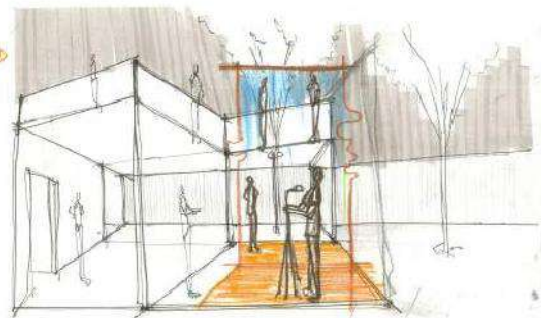
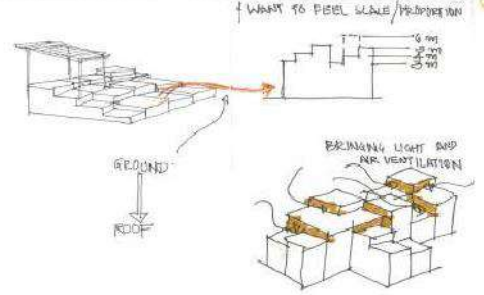
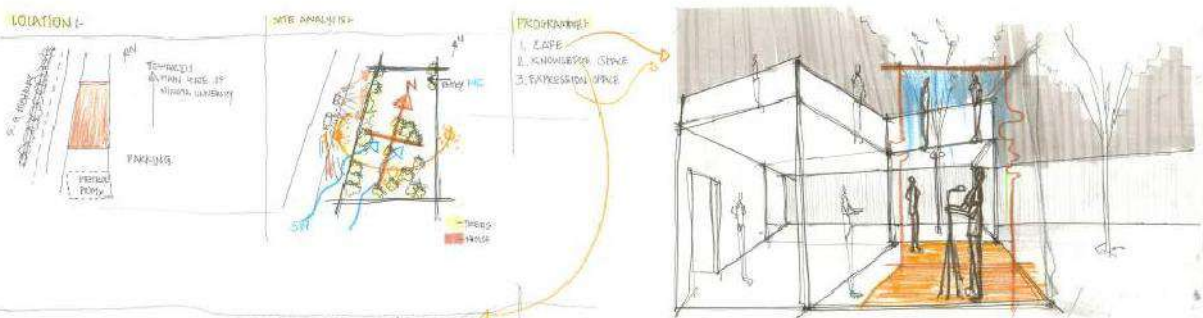


18BAR056

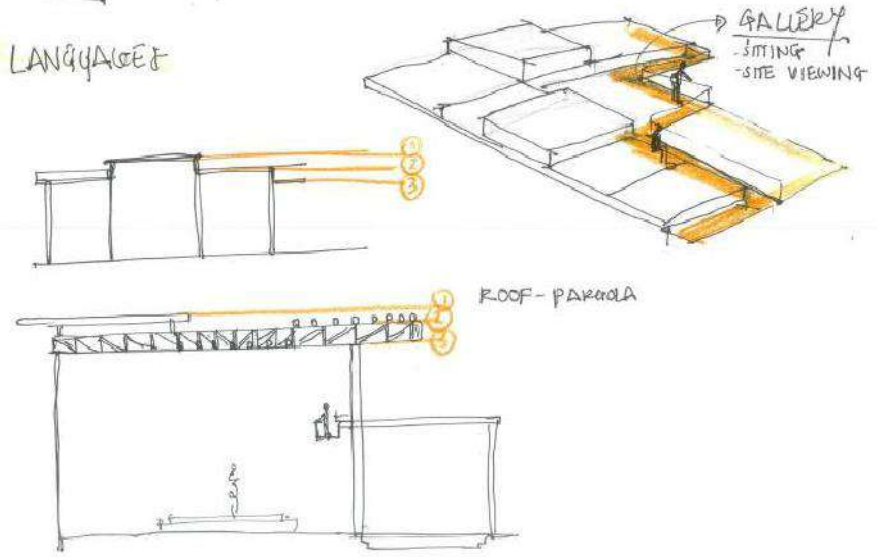
P L A N - S T R U C T U R E 1 2



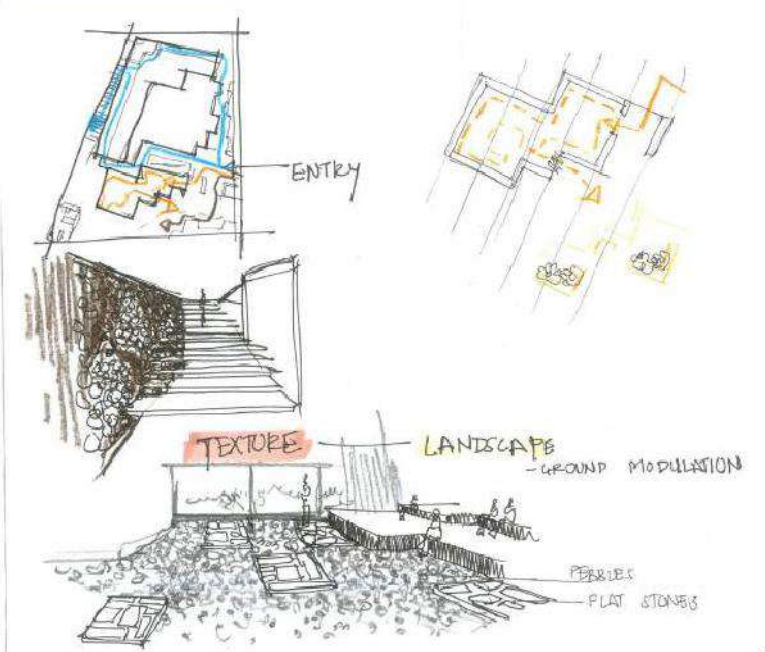


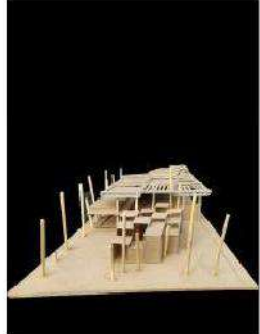
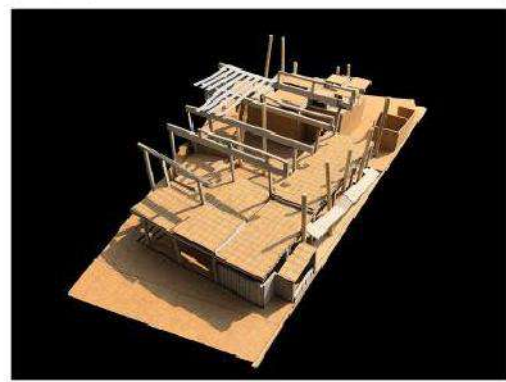
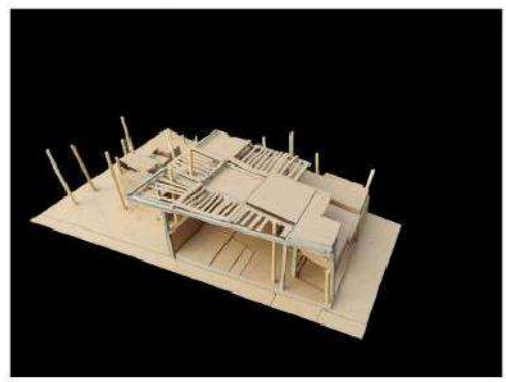
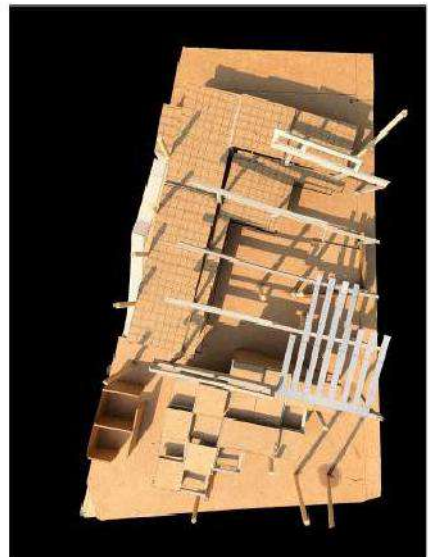
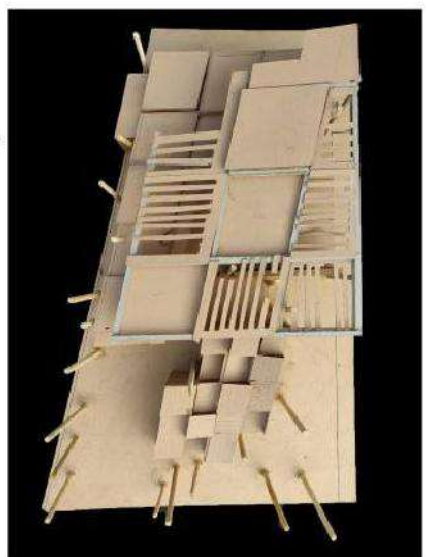
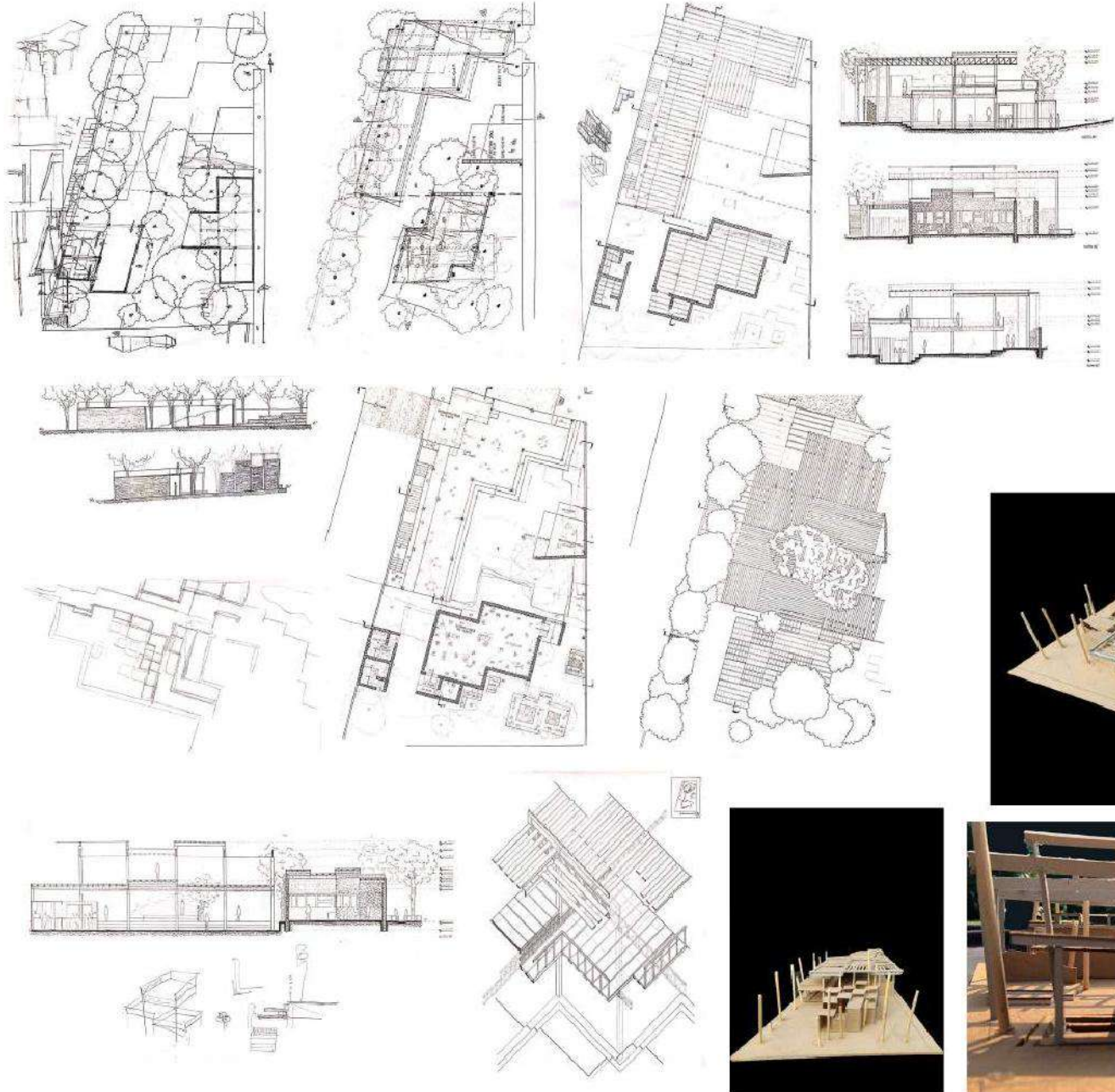


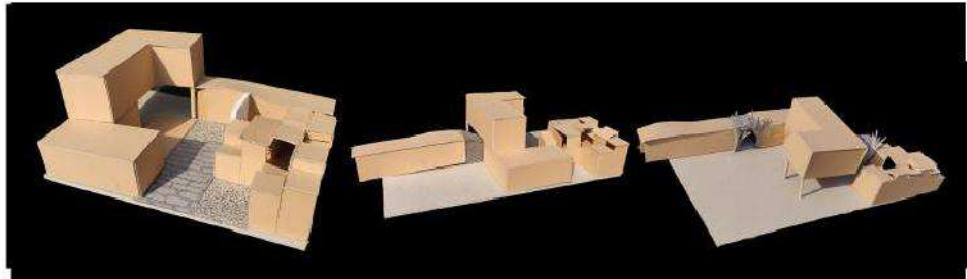
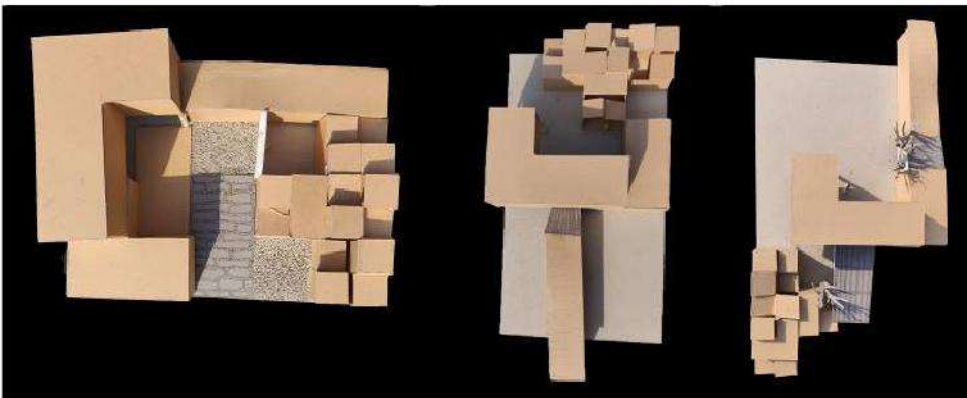
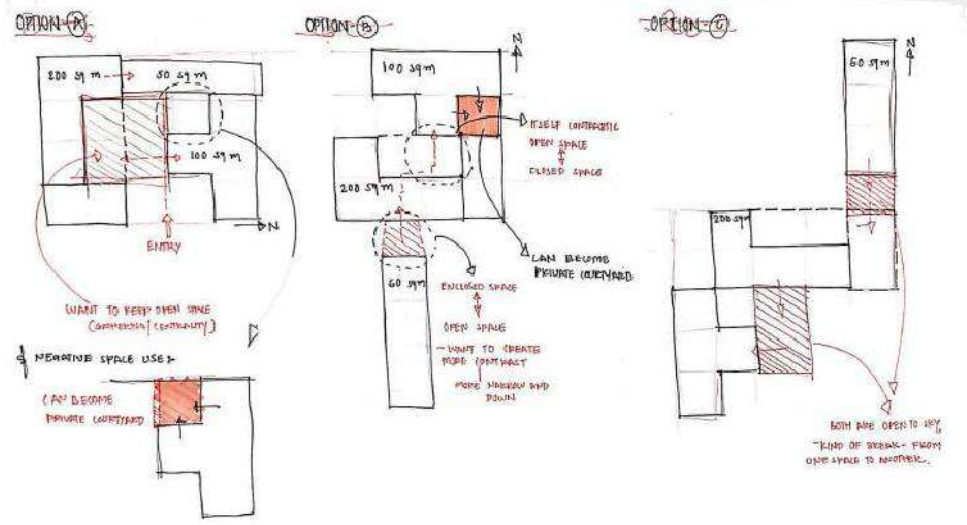
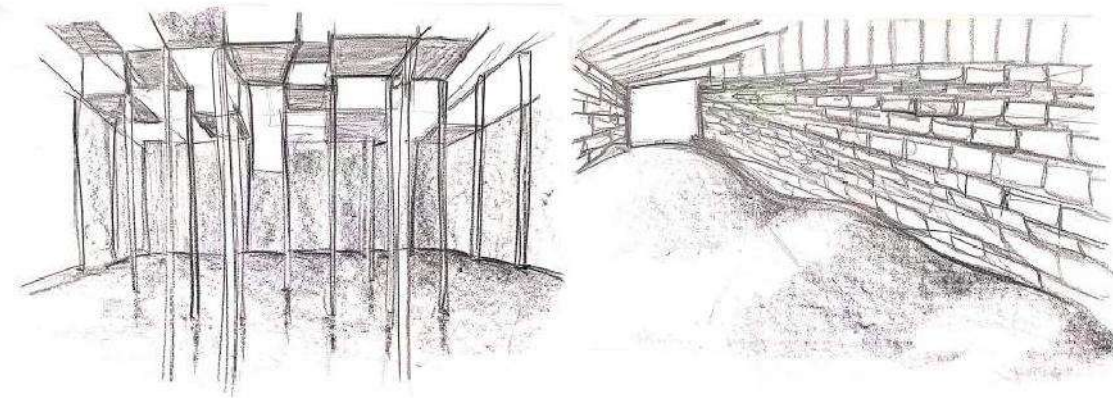
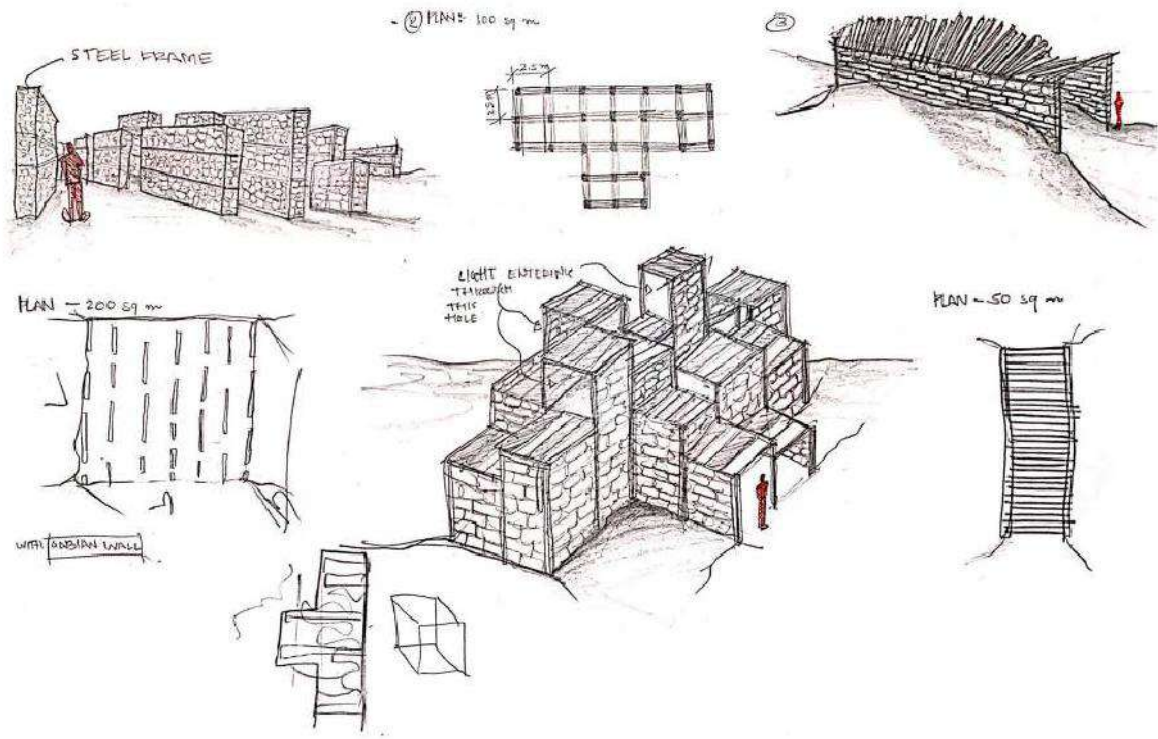
**LANGUAGE**



**MOVEMENT / CIRCULATION**







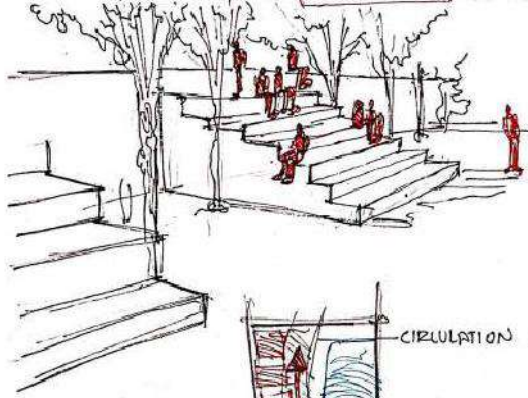
**PROPOSAL**

**FEELING**

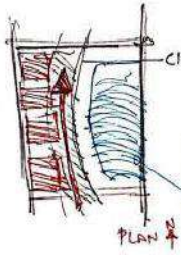
- FIRST OF ALL, THERE ARE LOTS OF VEGETATION. — FEELING COOL, BUT AT THE SAME TIME FEELING LITTLE WARMNESS.
- NEAR THE HIGHWAY, BUT CAN'T SEE ANYTHING. WHAT IS HAPPENING OUTSIDE. THAT'S INCREASES OUR CURIOSITY THAT WHAT IS HAPPENING.
- ALSO, SAW ALL THE NEEM TREES, SO KIND OF BORING.
- LOOK LIKE ISOLATED SPACE.
- NOISE DISTURBANCE DUE TO NEAR THE HIGHWAY

**IDEA**

— THERE SHOULD BE A SEATING SPACE FOR STUDENTS.



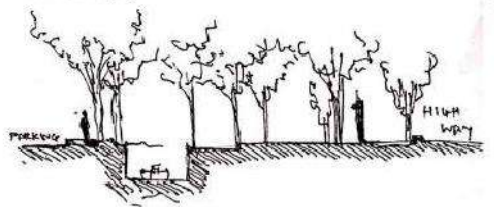
- START WITH THE WALL. CAN BE SEEN OUTSIDE WHAT IS HAPPENING OUTSIDE.
- UNDER THE TREES, WITH DEFUSING LIGHTS
- ALSO WORKS AS — INTERACTION SPACE — AMPHITHEATRE



CIRCULATION — STEPS FLOW WITH THE PATHWAY. SO, CREATE AN A PLEASURE SPACE.

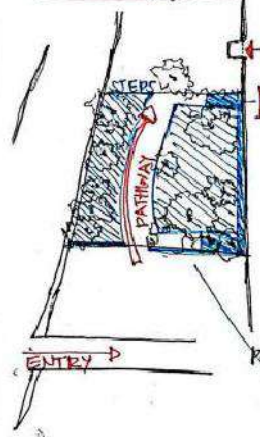
CAN BE BUILT CAFE OR SOME STORES.

**PROPORTION**



SECTION THROUGH WATER TANK.

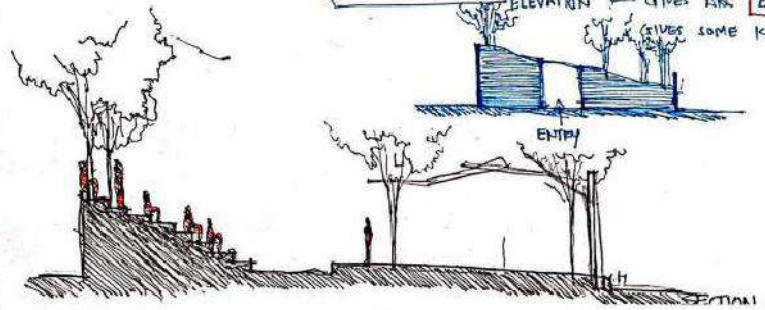
**AMPHITHEATRE**



ENTRY

N  
PLAN

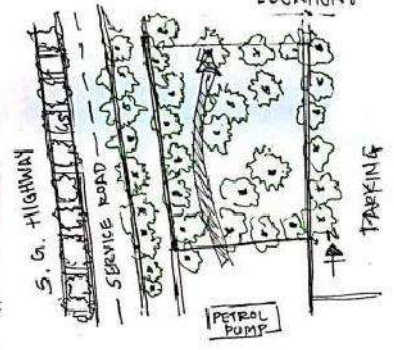
ELEVATION — GIVES AN GATE THAT GIVES SOME KIND OF PRIVACY



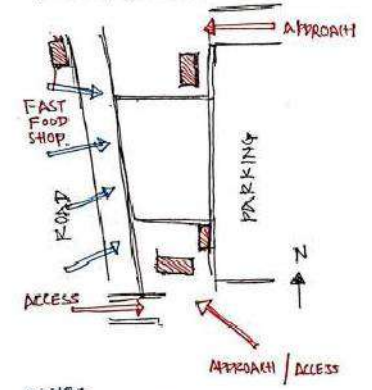
- FROM THIS SIDE, LOOKS LIKE ISOLATED SPACE, BUT THIS WALL INCREASE CURIOSITY OF THE STUDENTS THAT WHAT IS HAPPENING THERE.
- SOMETHING SPECIAL EVENTS CAN BE DONE EASILY BECAUSE OF ISOLATED SPACE.

**SITE ANALYSIS**

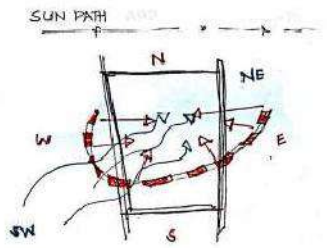
**LOCATION**



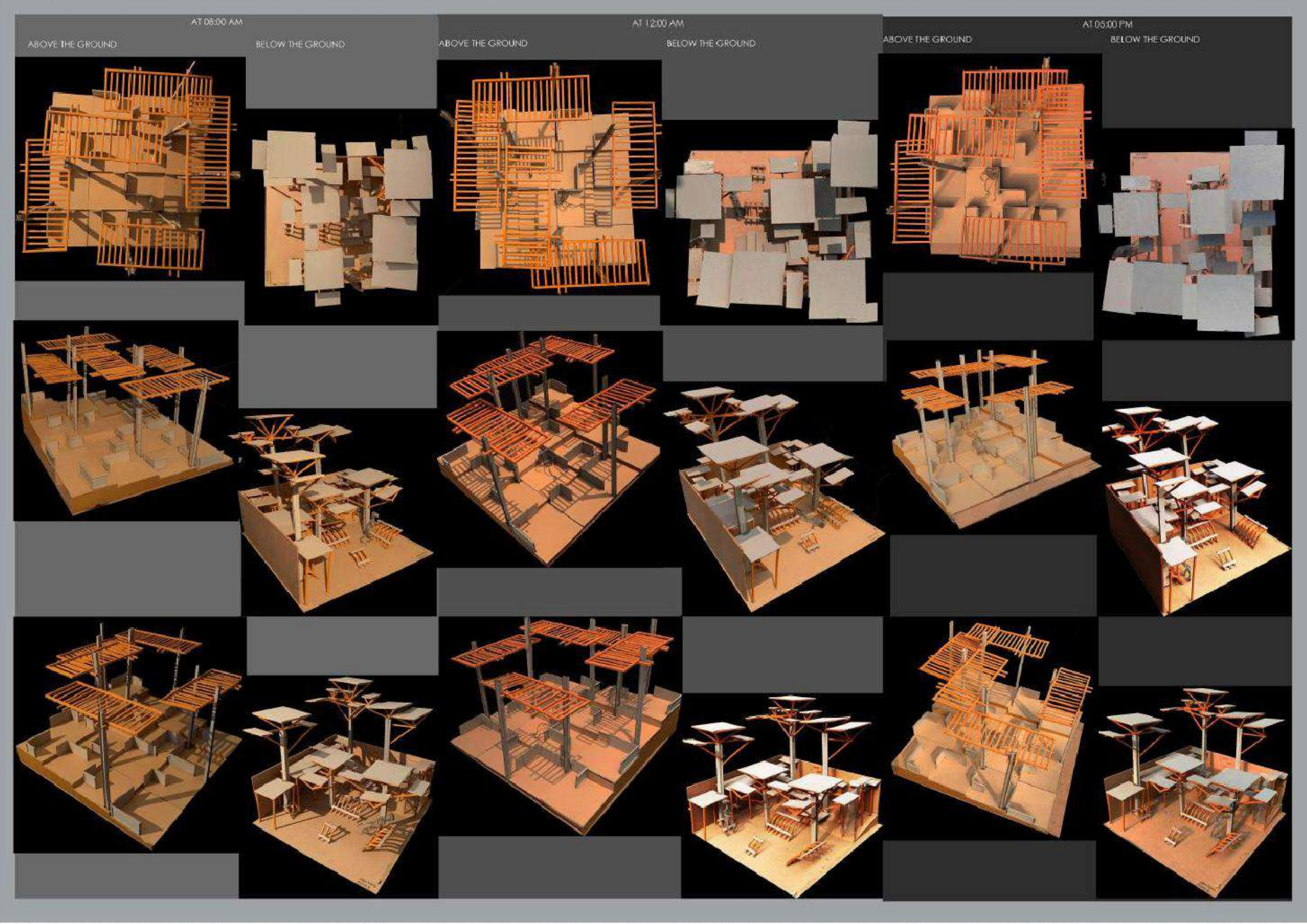
**EXISTING CONTEXT**



NOISE DISTURBANCE — FROM HIGHWAY..



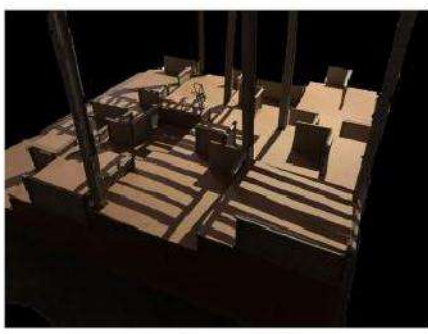
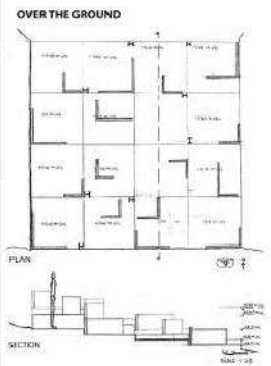
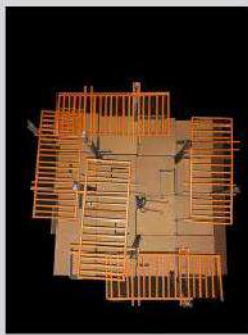
- DUE TO RANDOMISED TREE, LIGHT AND SHADOW PLAY ARE EFFECTIVE
- ALSO DIMMED LIGHTS COME THROUGHOUT THE DAY.
- BECAUSE TREES AND VEGETATION ON THE GROUND ATMOSPHERE REMAINS COOL THROUGHOUT THE DAY



**CONCEPT NOTE:**

**OVER THE GROUND**

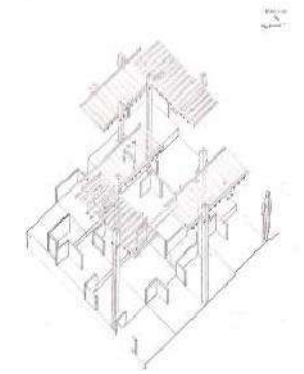
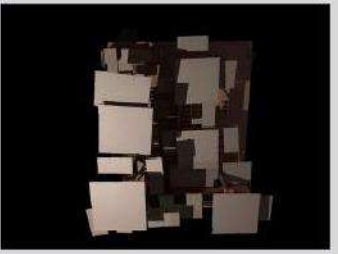
IN OVER THE GROUND, I WANT TO CREATE A GRADUAL SLOPE ON THE GROUND, WHICH I HAVE GIVEN BY DIVIDING SITE INTO GRID. I WANT TO CREATE A SPACE WHERE ONE CAN FEEL FREE MOVEMENT AND FREEDOM. SO I PUT STEEL MODULE IN CERTAIN MANNER THAT CREATES A FREE MOVEMENT SPACE. I TRIED TO PLAY WITH LIGHT AND SHADOW BY ROOF. ALL THE MODULES ARE IN THE ONE DIRECTION BECAUSE I WANT TO GIVE A FOCUS ON THE VIEW. SO, I CHOSE A SITE ON THE BANK OF SABARMATI RIVER. THERE ARE SOME MODULES PUT IN SUCH A DISTANCE THAT CREATES A PRIVACY.



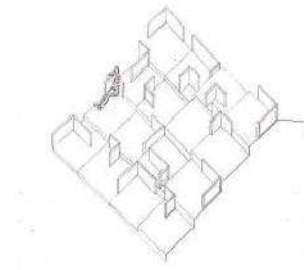
**UNDER THE GROUND**

**UNDER THE GROUND**

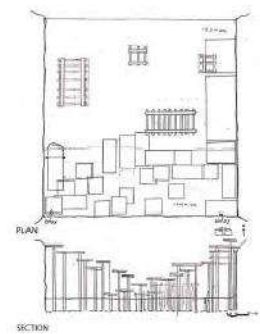
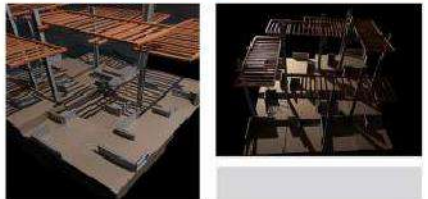
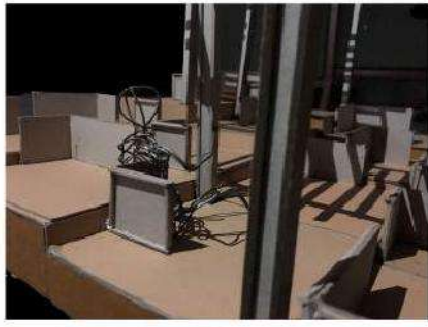
IN UNDER THE GROUND, I TRIED TO CREATE A SPACE WHERE ROOF AND FLOOR MIXED UP WITH EACH OTHER, WHICH IS DONE IN CENTRAL AREA. I ALSO TRIED TO MODULATE THE GROUND BY CERTAIN MODULES OF STEEL PLATE, WHICH CREATES A KIND OF STAIR CASE. WHEN THERE IS A DIRECT SUN LIGHT THE SHADOW FORMATION IS VERY INTERESTINGLY SEEN ON THE GROUND.



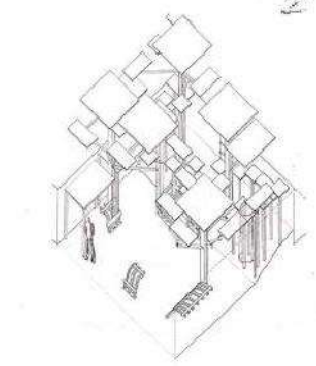
AXONOMETRY VIEW (WITH THE ROOF)



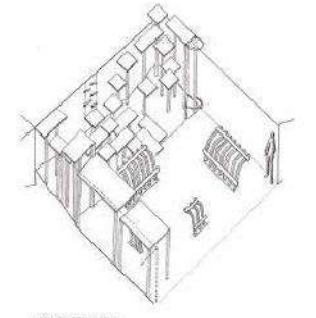
AXONOMETRY VIEW



SECTION



AXONOMETRY VIEW (WITH THE ROOF)



AXONOMETRY VIEW

