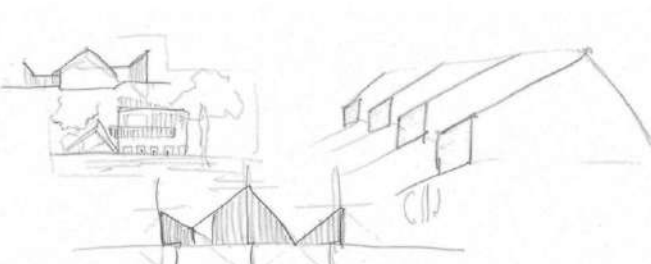
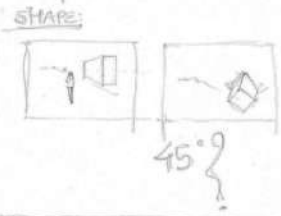
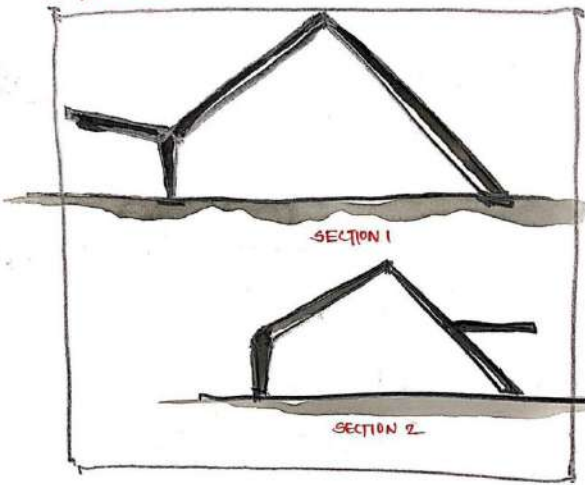


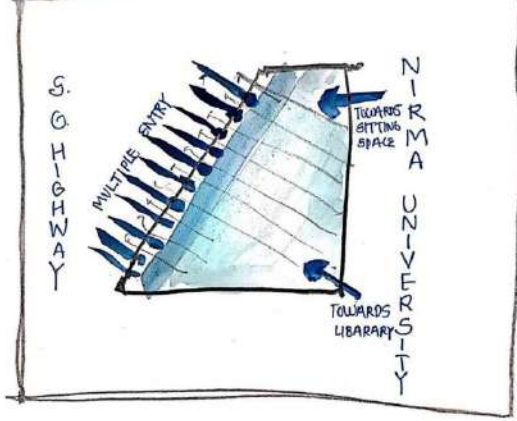
Conceptual



MODULE:



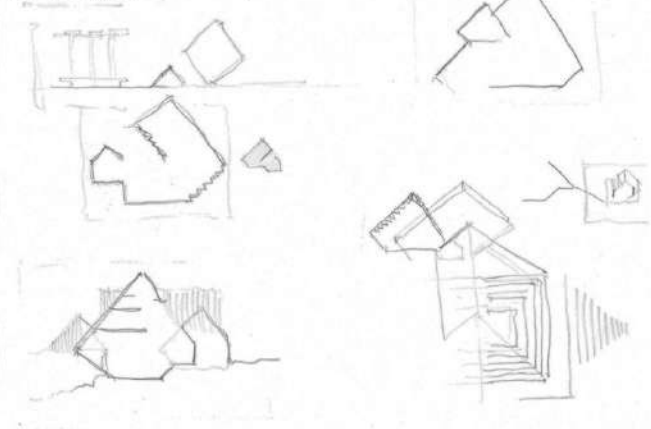
MOVEMENT



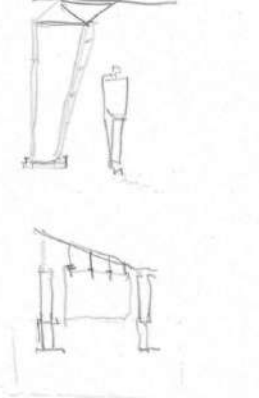
SITE VISIT:



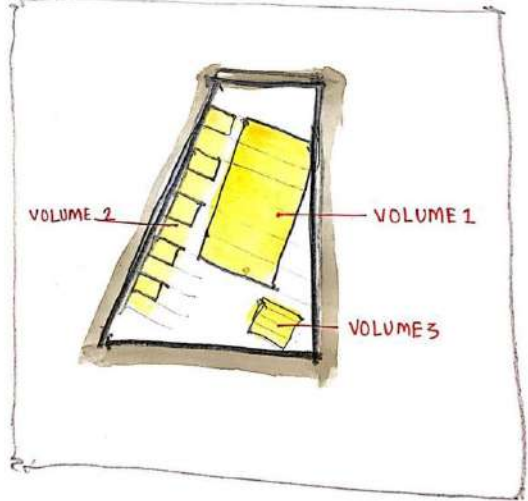
LANGUAGE:



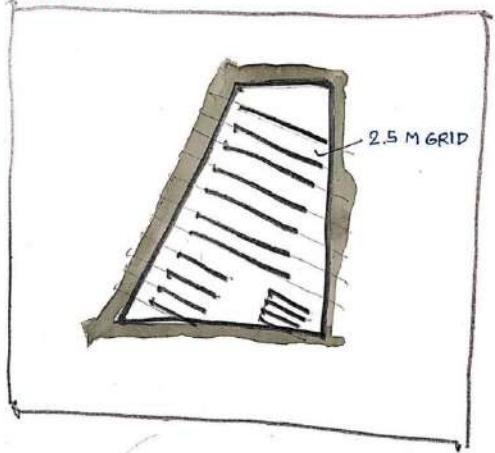
STRUCTURE:

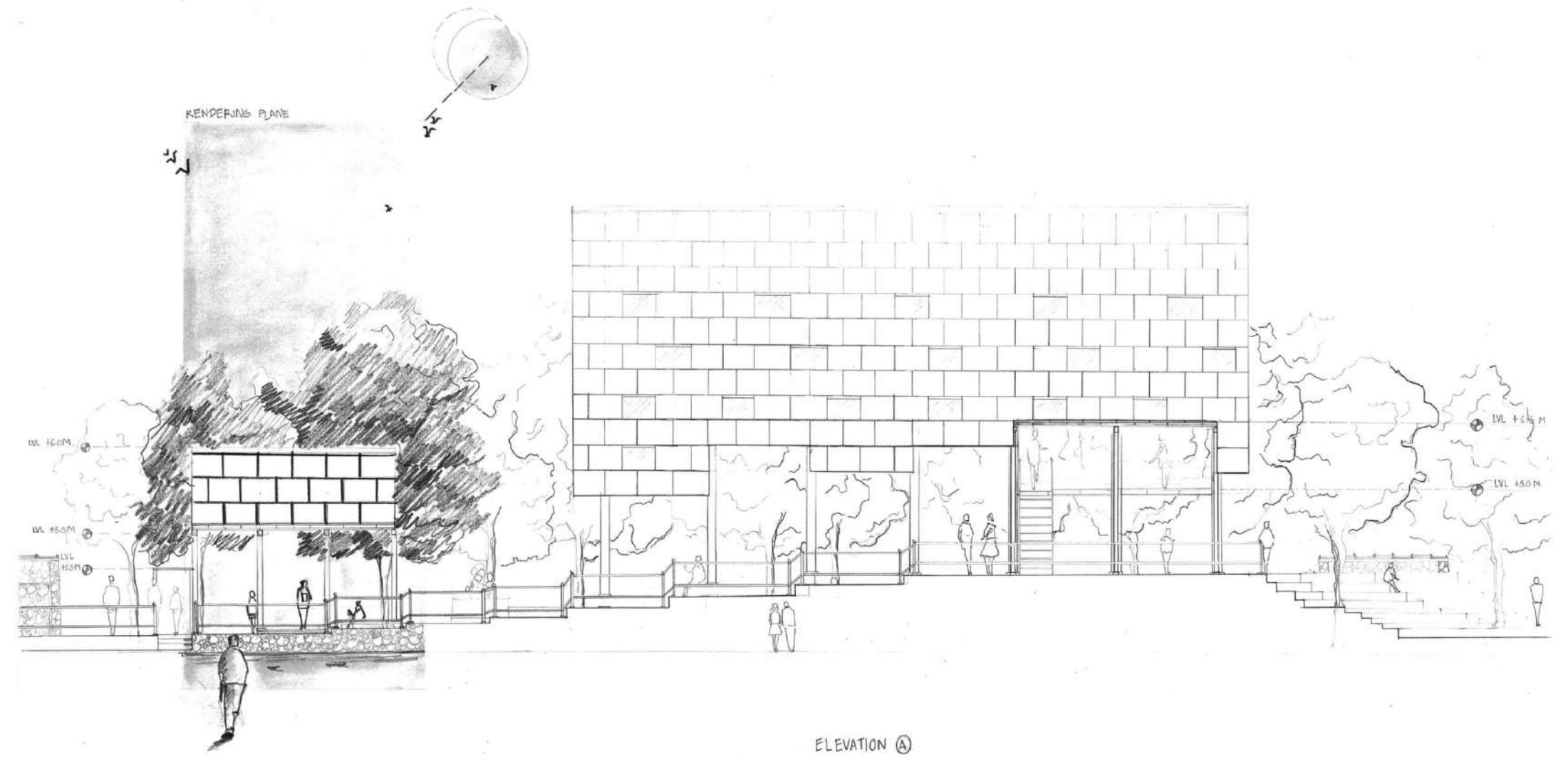


BUILDABLE SPACE:

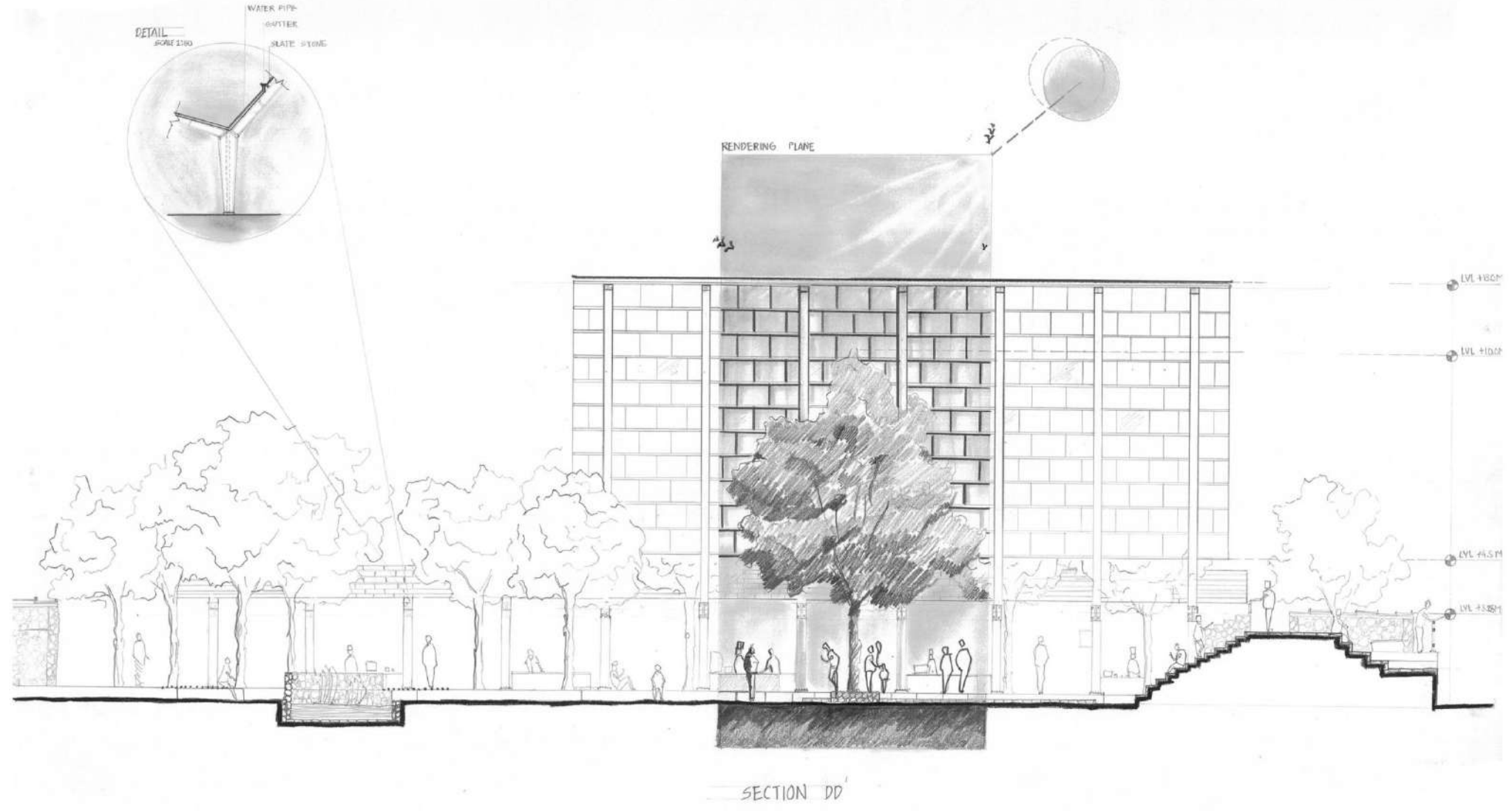


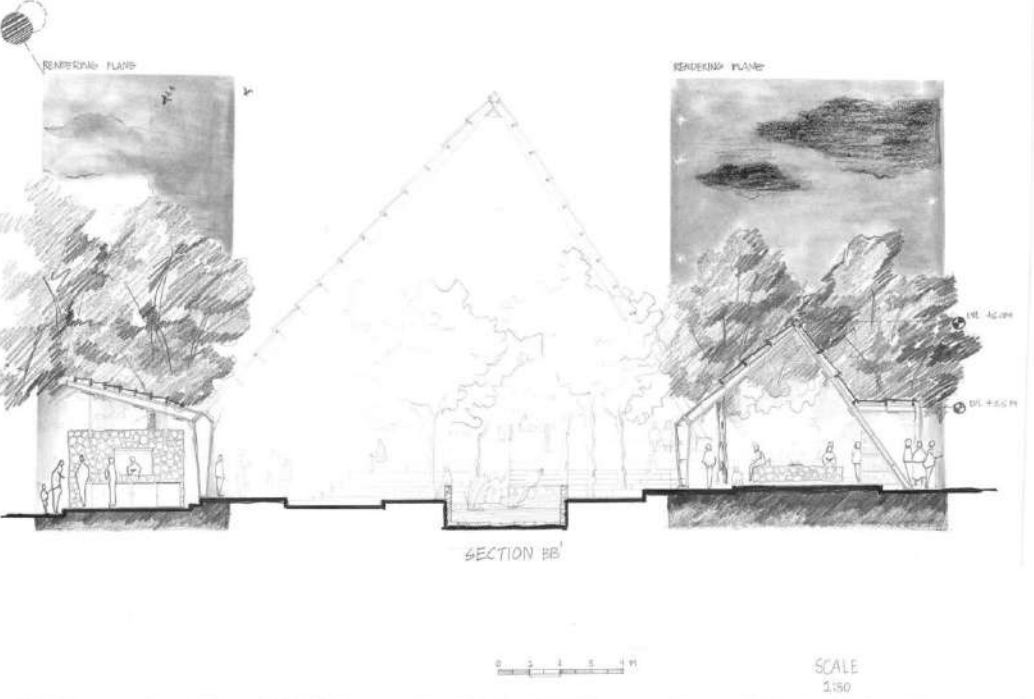
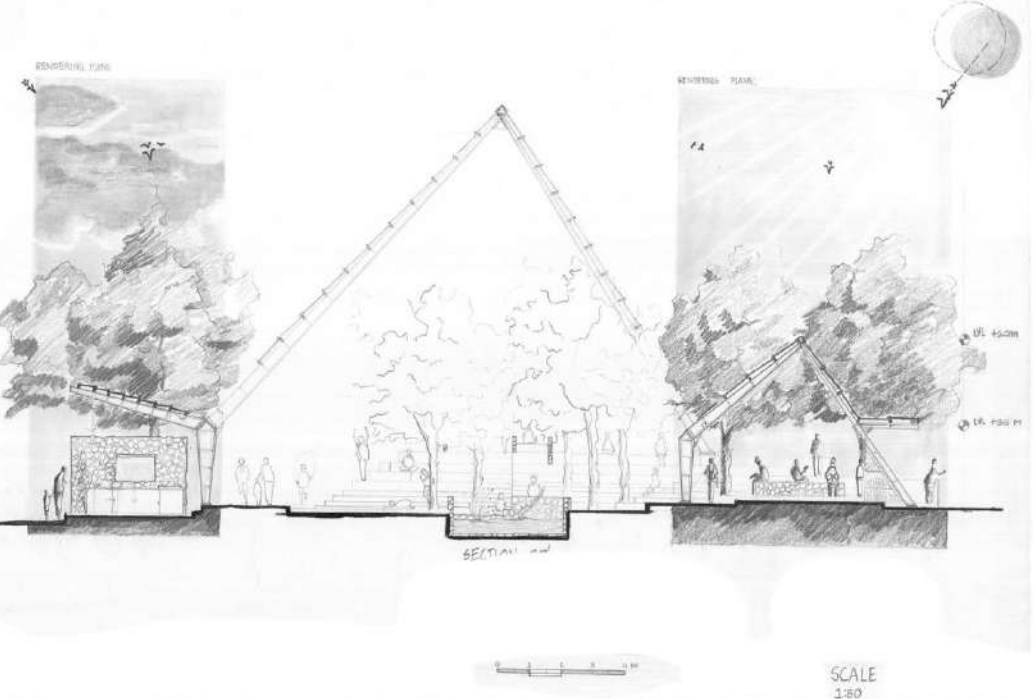
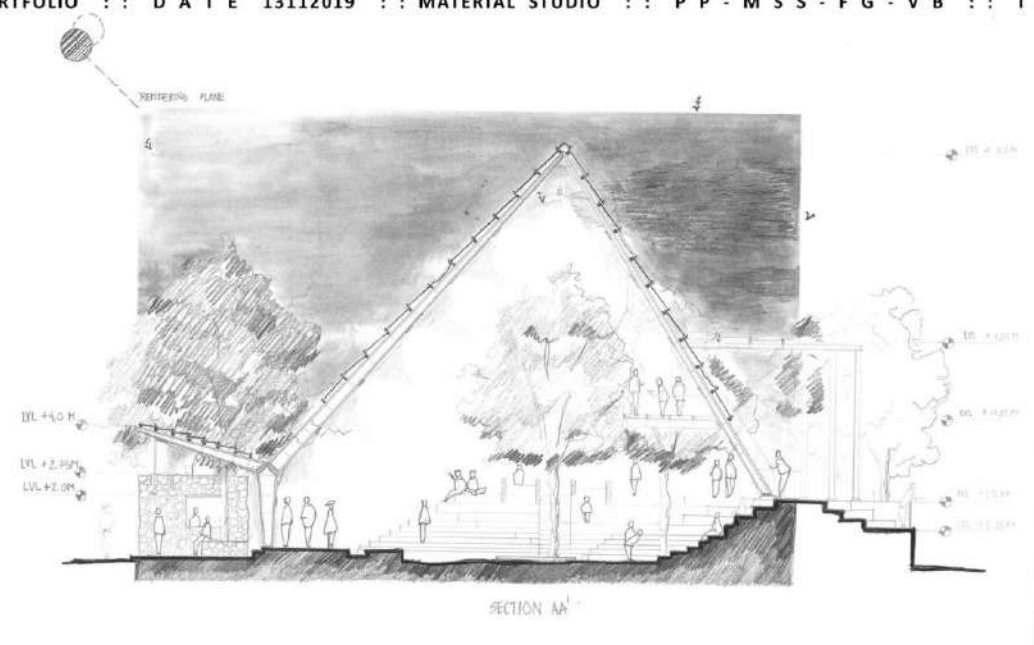
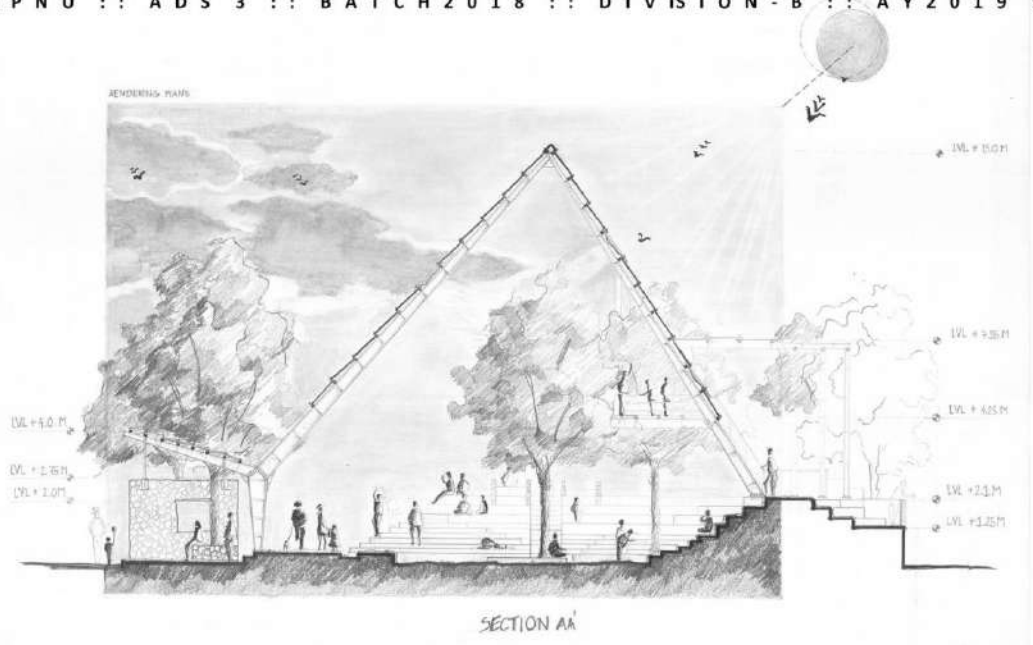
SYSTEM!





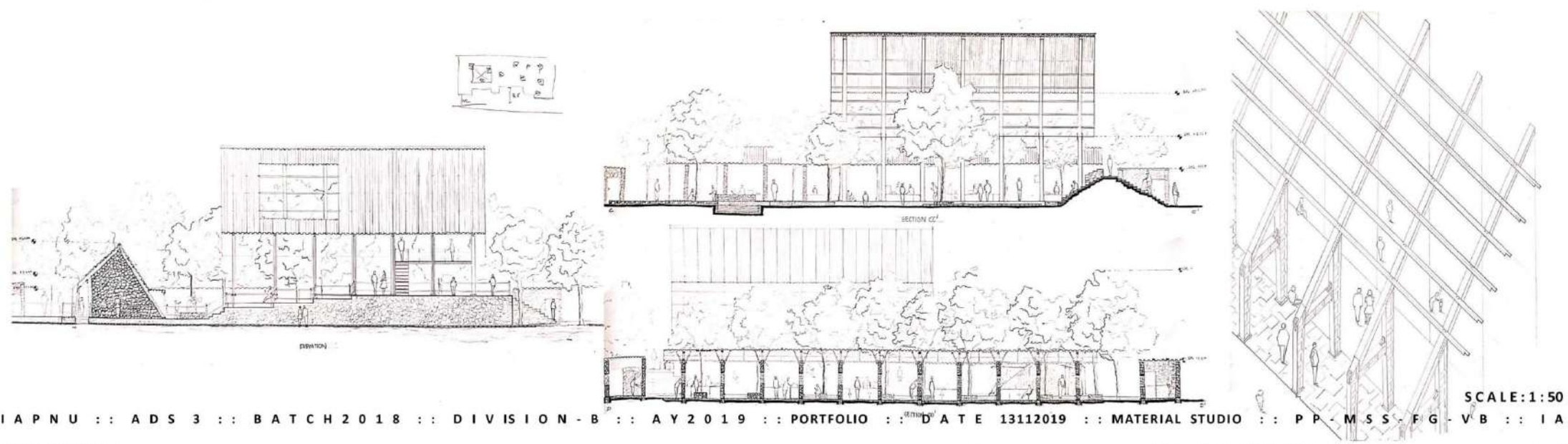
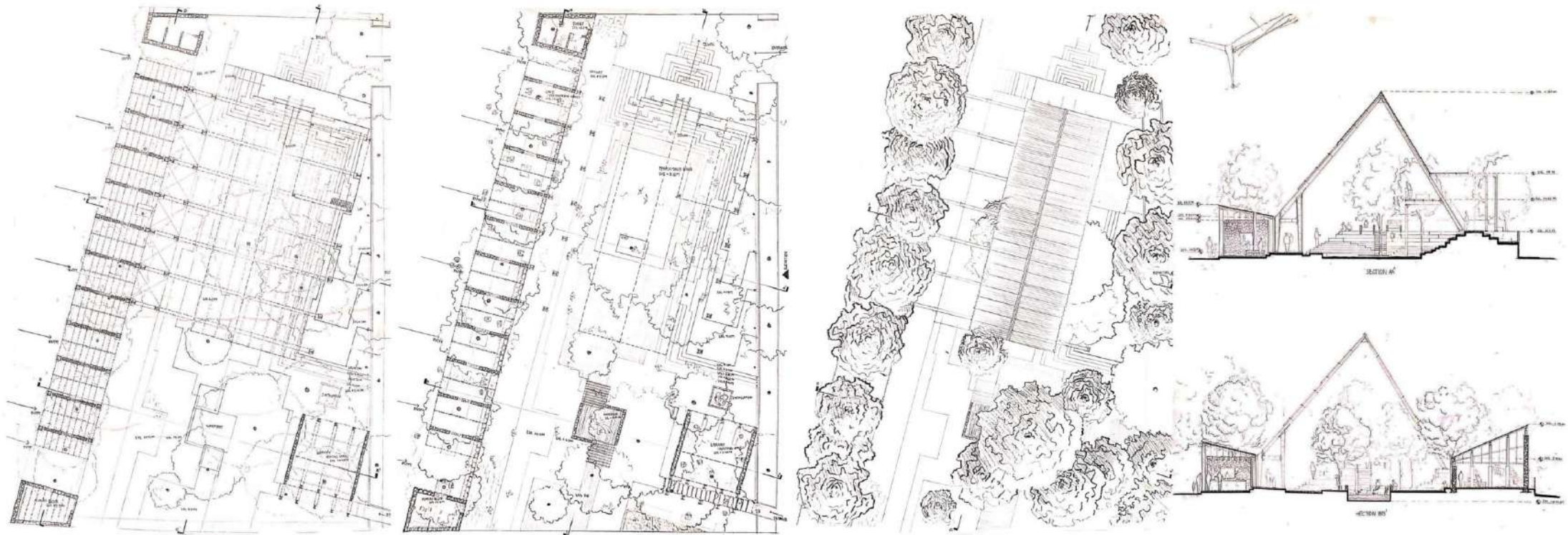
SCALE
1:50



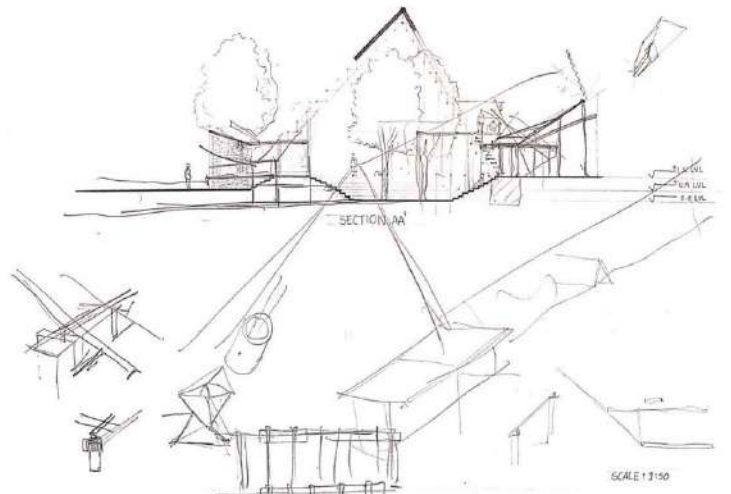
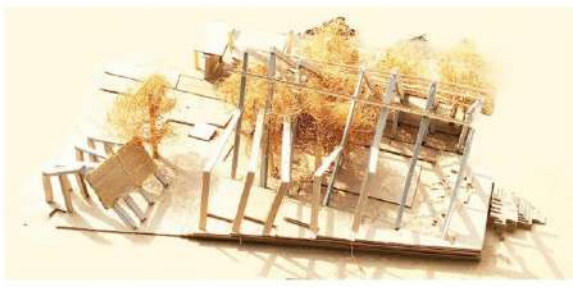
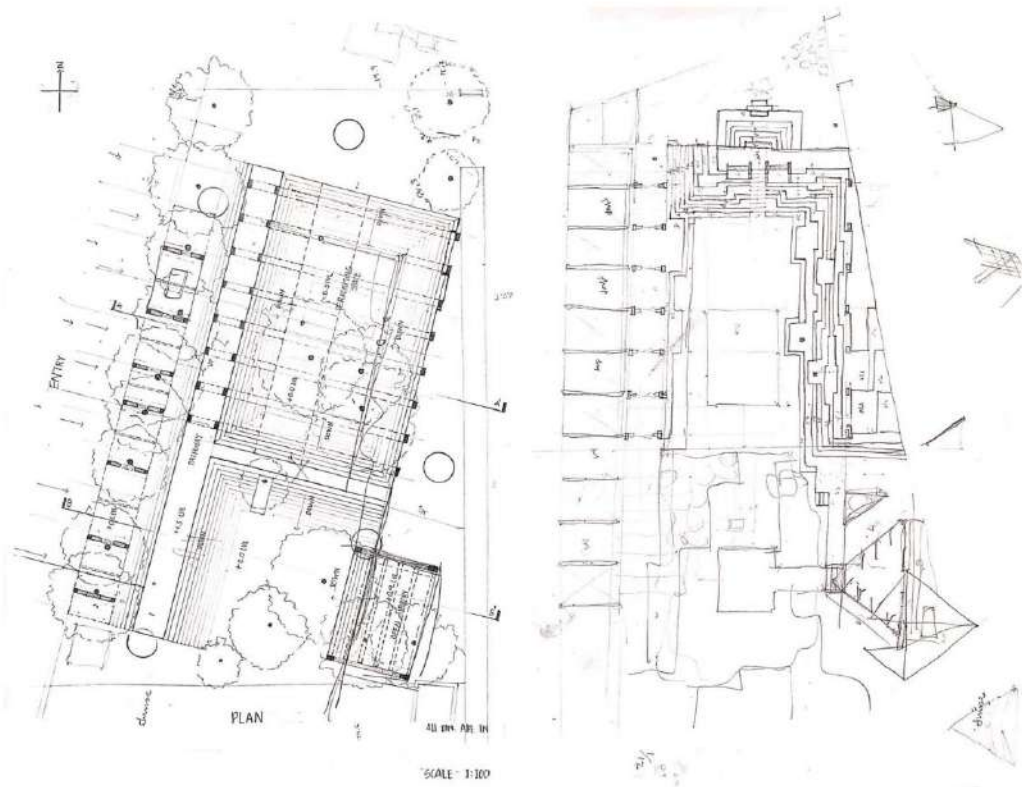


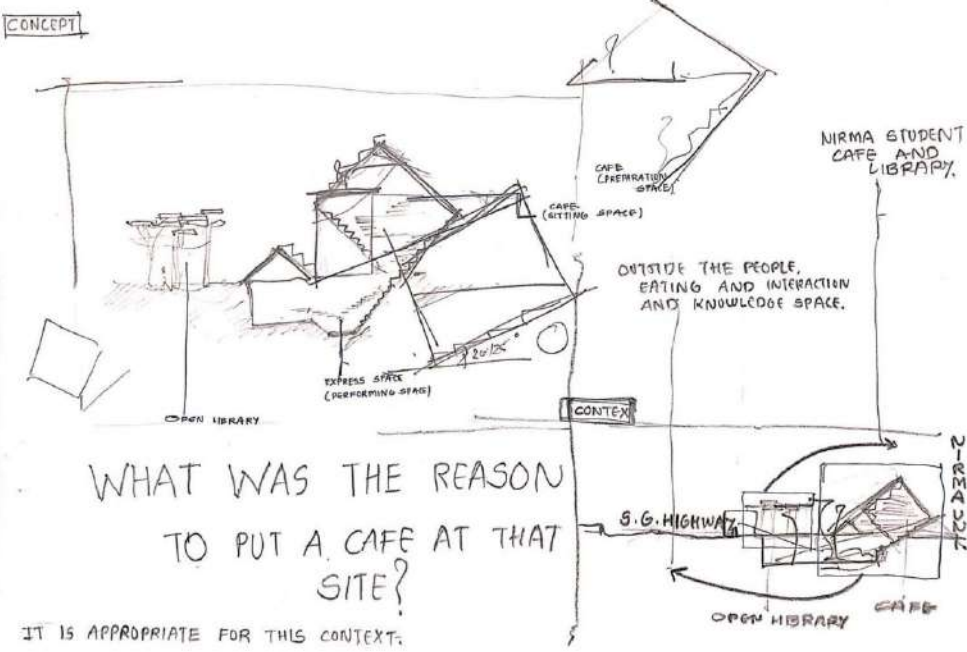
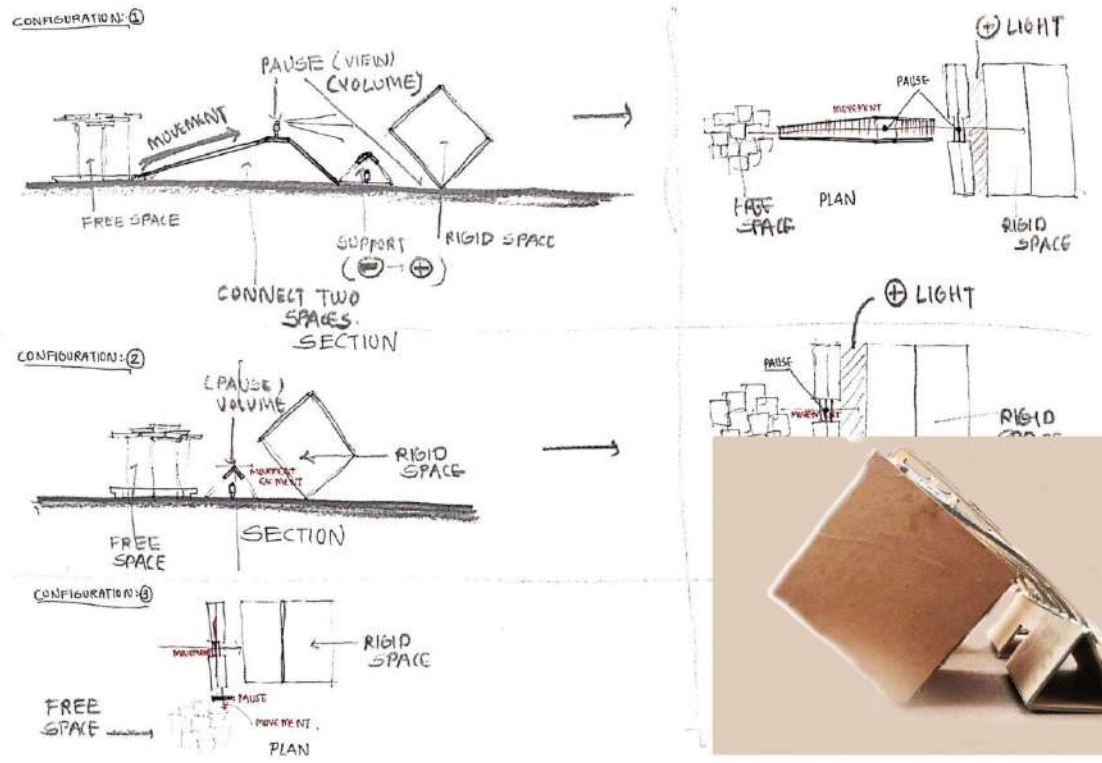
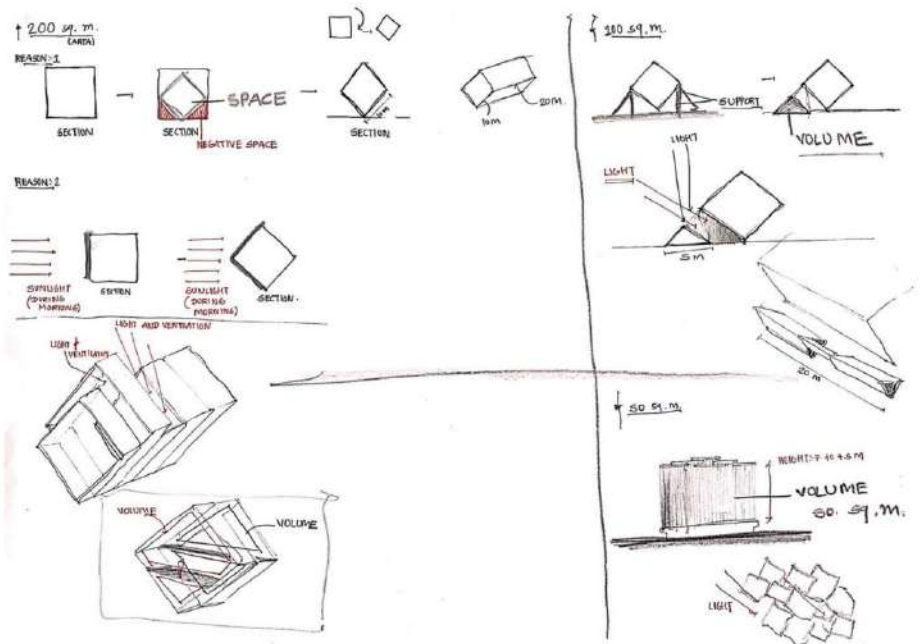
SCALE 1:80

SCALE 1:80



SCALE:1:50



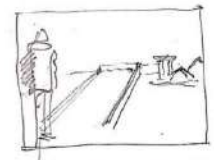


STORY:

ONE PERSON
HE IS A VERY CURIOUS...
BUT HE DOESN'T KNOW
HOW TO GET KNOWLEDGE

SOMEbody suggest THAT
KNOWLEDGE INCREASES WITH
THE HELP OF BOOK AND
INTERACTION WITH OTHER
PEOPLE

© Chait Jastan - SHP



THEN HE FOUND A SAFE PLACE
WHERE HE CAN ACHIEVE
BOOK AND INTERACTION, ON
A S.G HIGHWAY NEAR TO
NIPAH UNIVERSITY.

• IT WAS A CAFE WITH OPEN
LIBRARY.

THEN AFTER HE WENT THE CAFE
WITH HIS FRNDS.

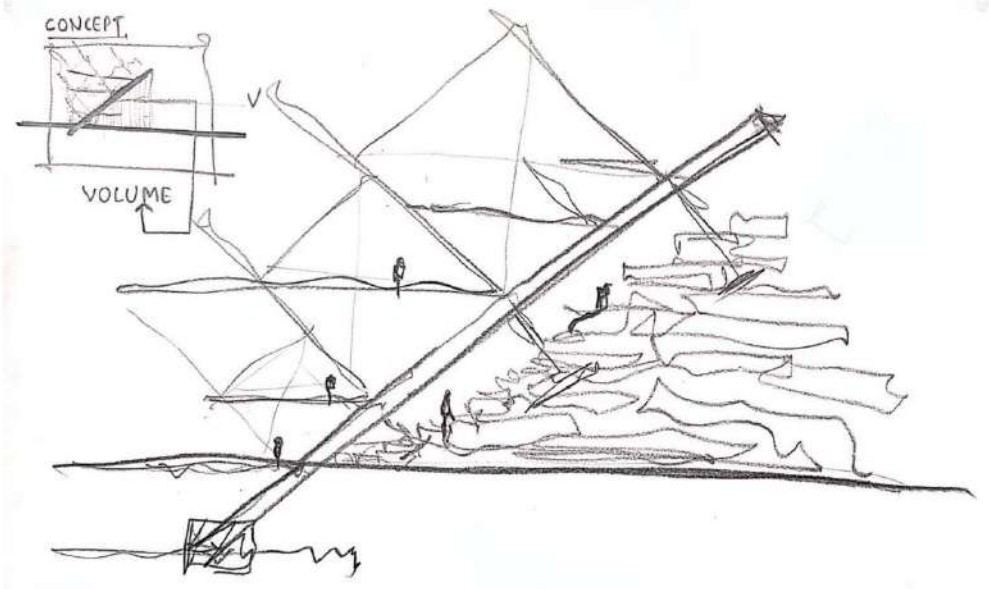
ONCE HE READ THE ARCHITECTURE
BOOK IT IS ABOUT THIS CAFE.

HE READ THE CONCEPT OF THE
BUILDING

THE ARCHITECT OF THE CAFE,
BEFORE PUTTING A FUNCTION IN
THIS SPACE, HE REALIZED THAT
CAFE IS A VERY RIGID, GEOMETRY
SPACE FOR INTERACTION WITH OTHER
PEOPLE AND. THE OPEN LIBRARY
IS A VERY FREE FORM SPACE FOR
A INTERACTION WITH BOOK.

WHY THE CAFE?

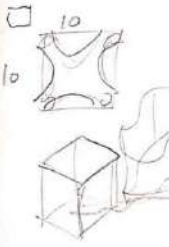
A SPACE TO GET KNOWLEDGE IN HISTORY THROUGH INTERACTION.



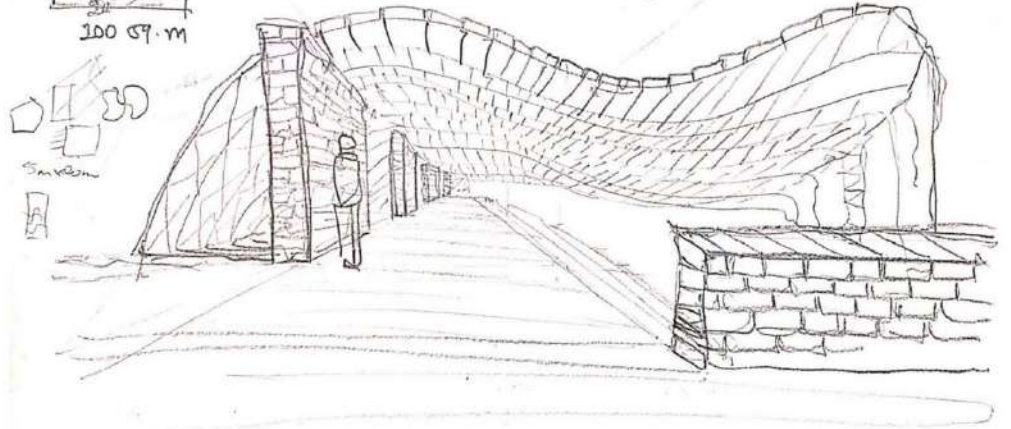
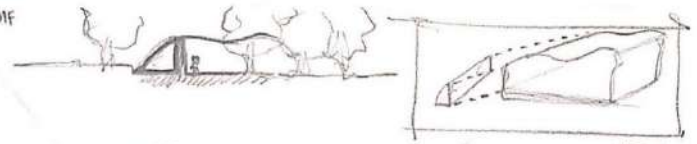
CONCEPT
20
3m
3m
200 sq. m.



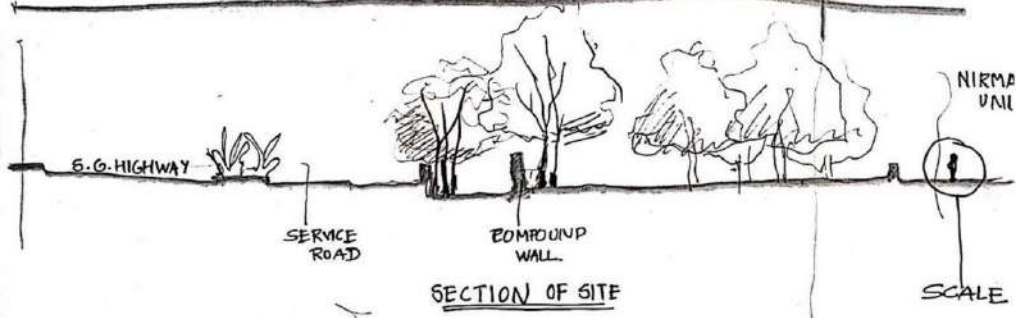
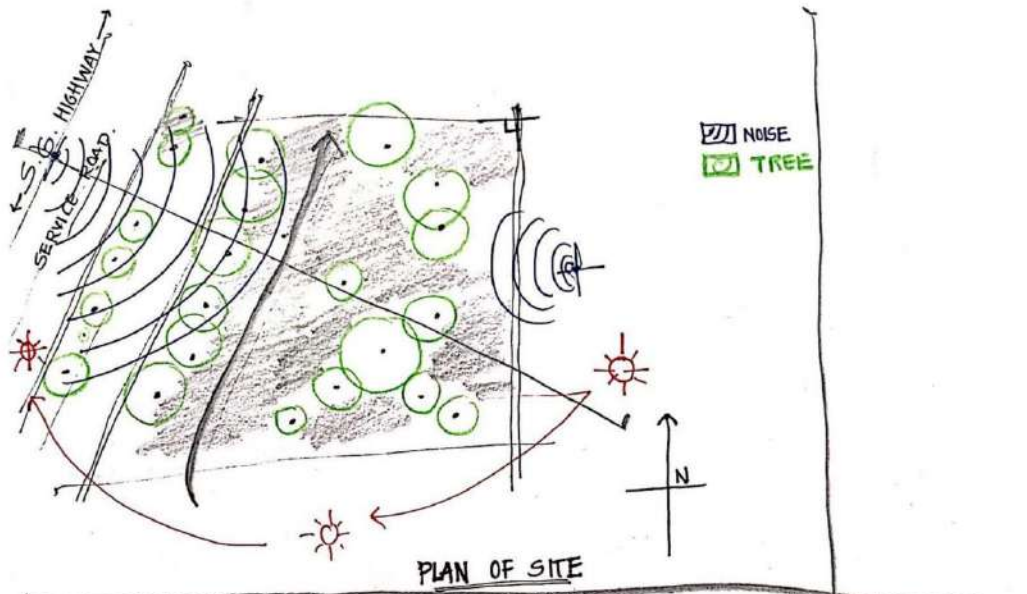
↑ STEEL
LIGHTER
STRUCTURE
STONE



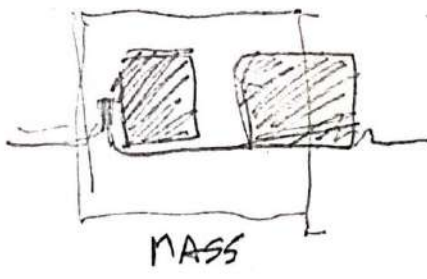
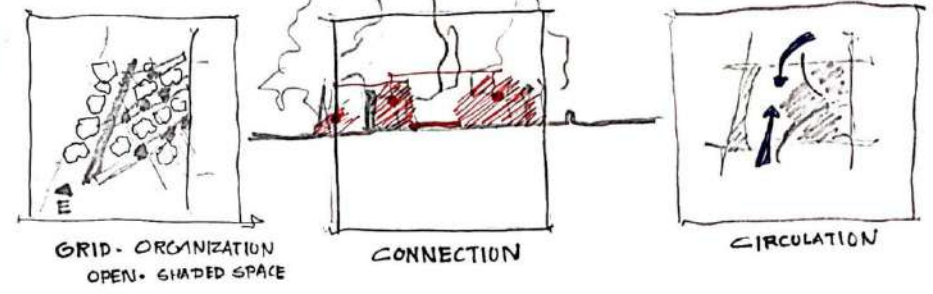
STEEL FRAME
100 sq. m



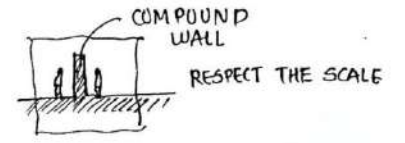
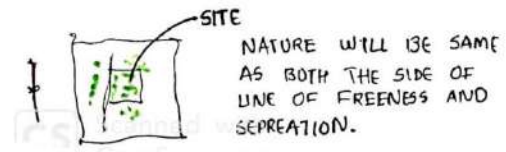
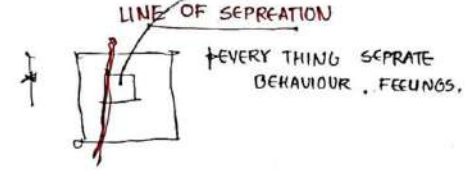
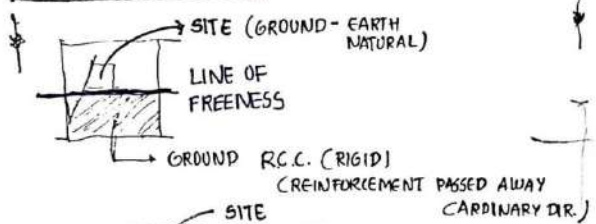
SITE ANALYSIS:



CONCEPT:



WHAT WAS FEELING:



I FEEL THAT A LIFE OF HUMAN IN NIRMA AND OUT OF NIRMA UNI. LIKE ON S.G. HIGHWAY IS DIFFERENT. SO SOCIAL CONTEX IS DIFF. BOTH SIDE.

I WOULD LIKE TO SUCH AS SPACE ON THIS SITE, THAT EVERYONE FEELS NO RESTRICTION AND BOTH THE SOCIAL CONTEX WILL BE INTERCHANGED.

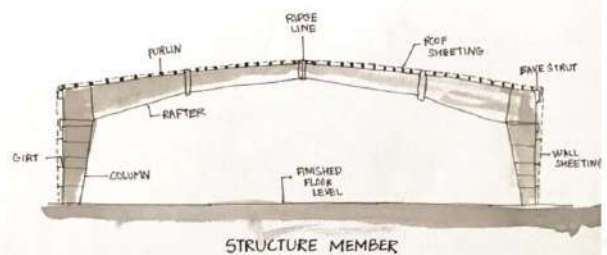


T I M E - 8 . 0 0 A . M .

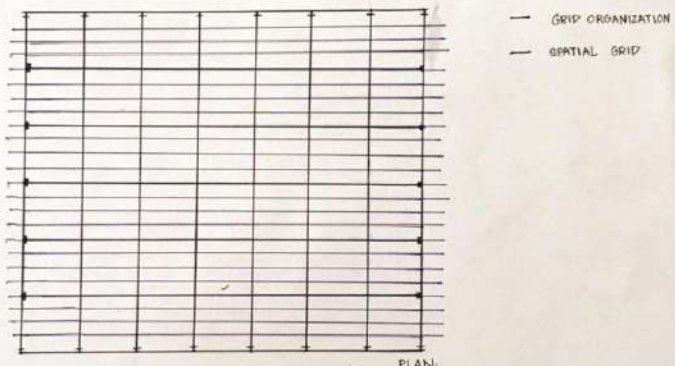
T I M E - 8 . 0 0 A . M .

T I M E - 8 . 0 0 A . M .

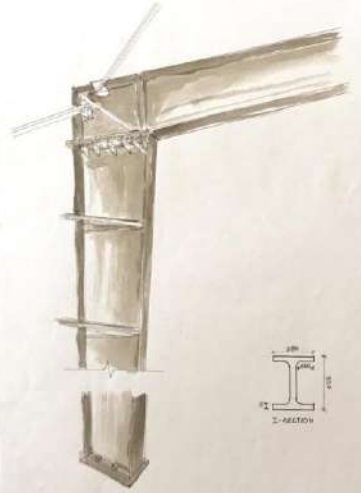
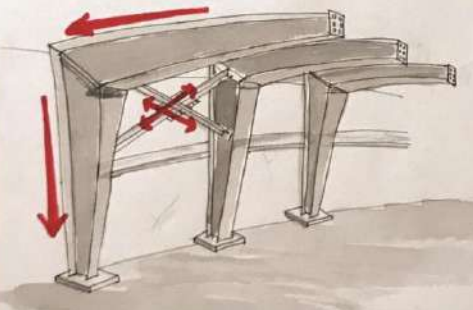
DECATHLON



ORGANISATION



LOAD TRANSFER



DECATHLON

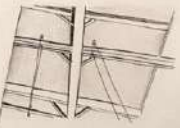
CONSTRUCTION TECHNIQUE DECATHLON

RCC-
CONCRETE IS POURED ON THE REINFORCEMENT FOLLOWED BY 2% CONSISTENT CURING

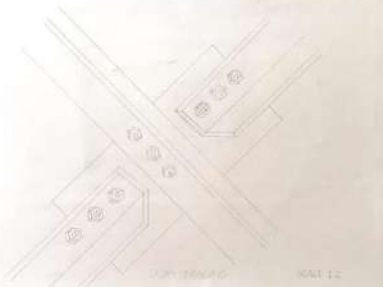
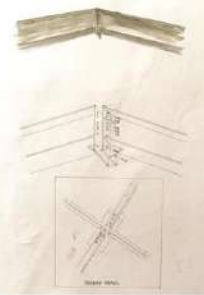
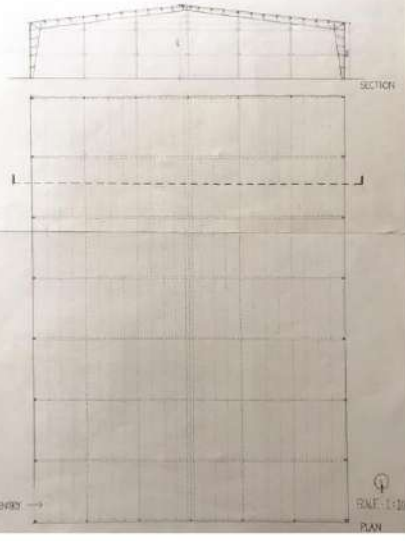
COLUMN-BEAM
- COLUMNS ARE FIRST IN THE RCC BY FIXING THEM TO METAL PLATES BY BOLTS.
- COLUMN-BEAM JOINTERY BY BOLTS.

ROOFING
- THE TOP LAYER IS OF STEEL SHEET FOLLOWED BY INSULATION PANEL.
- THE NEXT LAYER IS OF ALUMINIUM FOIL.
- NEXT LAYER - METAL GALL (RIB) STRUCTURE

SUSPENSIONS
LIGHTS AND FANS ARE SUSPENDED FROM THE METAL MEMBERS THROUGH WIRES



DECATHLON



DECATHLON

CIRCULATION
AS WE ENTER THE BUILDING, IT HAS TWO WAYS OF PASSING ONE FOR TWO WHEELS AND OTHER FOR FOUR WHEELS.
THE ENTRANCE COMBINES THE PLAY AREA, THERE IS ONE FROM THE ENTRY AND EXIT.
THE DRIVING COURSE IS NEAR TO THE ENTRY DATE.

MASSING
EXPLAINS ABOUT THE DIMENSIONAL CONFIGURATION OF A BUILDING.
GIVES THE IDEA OF THE VOLUME OF THE SPACE

