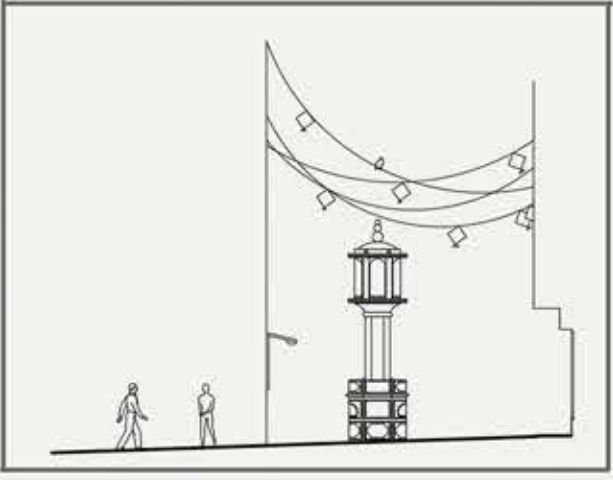


# ARCHITECTURAL DESIGN STUDIO

SEMESTER- II (2019-2020)



Dhal Ni Pol, Ahmedabad



## BRIEF

To create a community space in Dhal ni pol facing the common chowk and chabutra. It should include a library, a medical centre, public washroom, a home stay and parking space for two and four wheelers in the busy streets of Old Ahmedabad.

## CONCEPT

As the Name suggest "Dhal ni Pol" that the pol is built upon a slope. Our site was also on the slope so my main concept was to maintain the levels in the site and to connect the site with the chabutra at main end as chabutra also act a pause point which give the site much more importance.

Also thinking of the use i tried to create a space for every age group which can be used anytime.

Inculcating the ideas from the pol like multi-functional space, certain series of placing activities i tried to maintain that in my design.

Placing masses in such a way creating two pockets and giving them same importance was the thing i tried to maintain.

## FACULTY

Jaydeep Bhagat  
Shweta Suhane  
Manmayee Sharma  
Prachi Patel

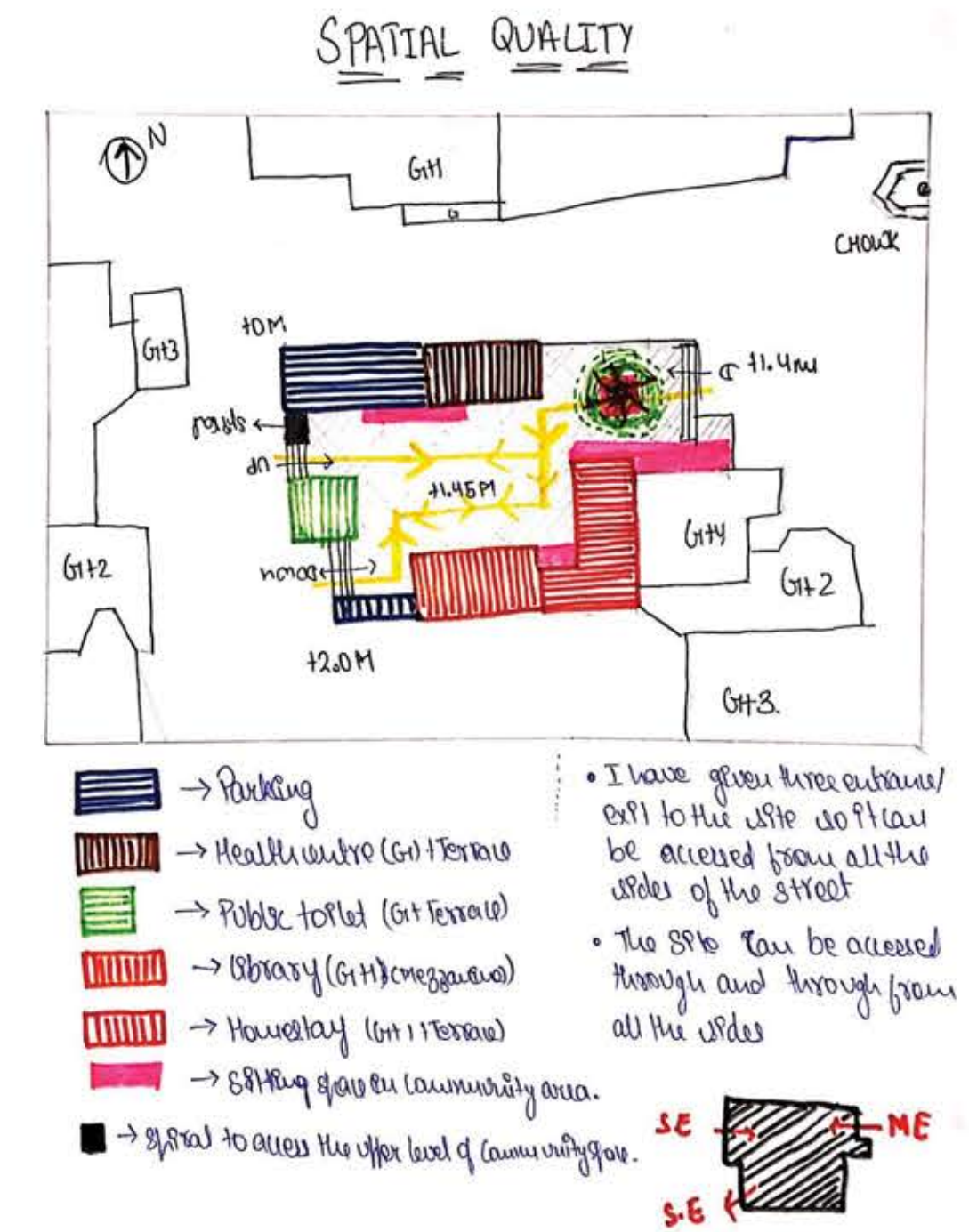
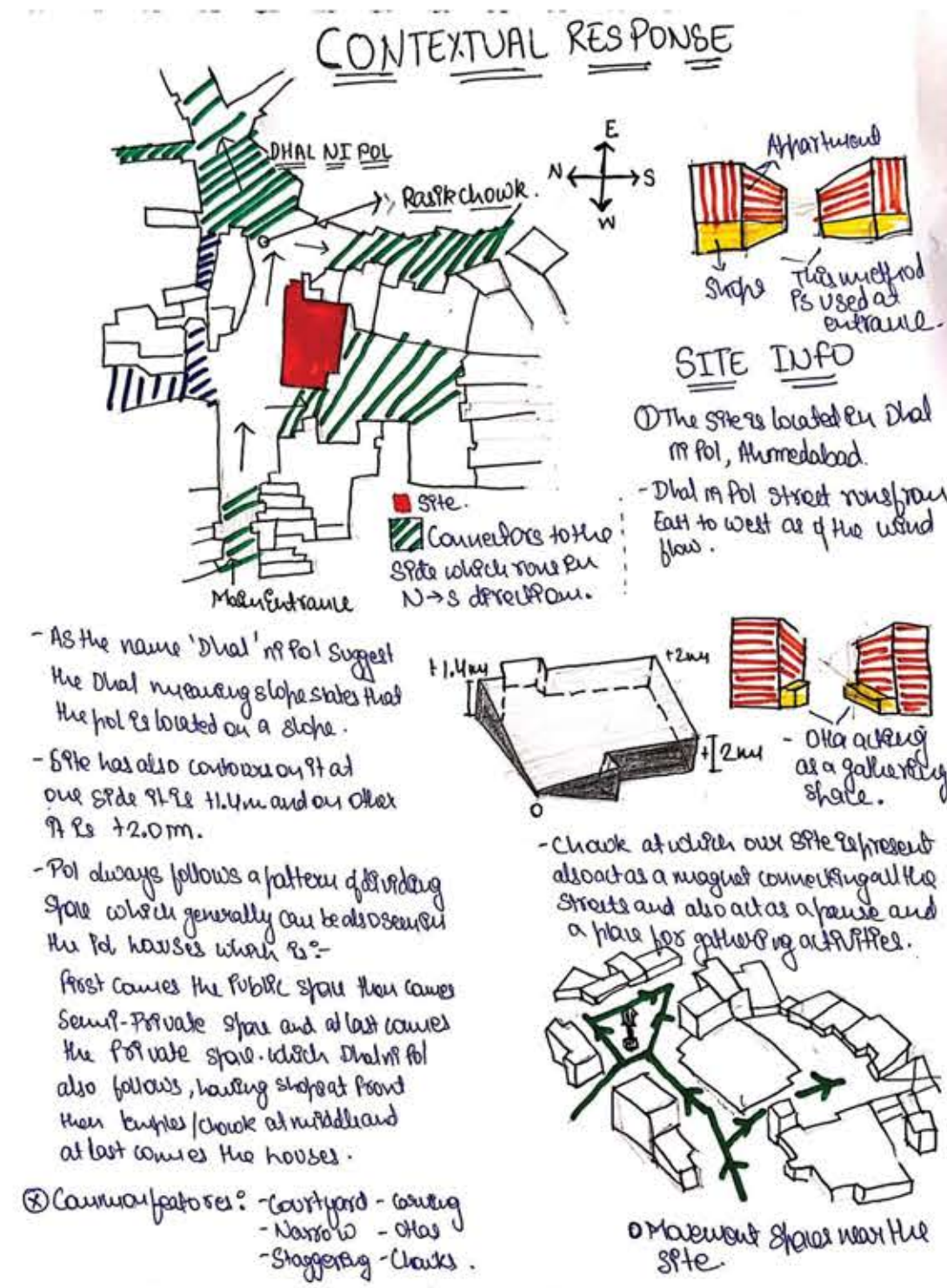


Nimesh Bansal  
19BAR019

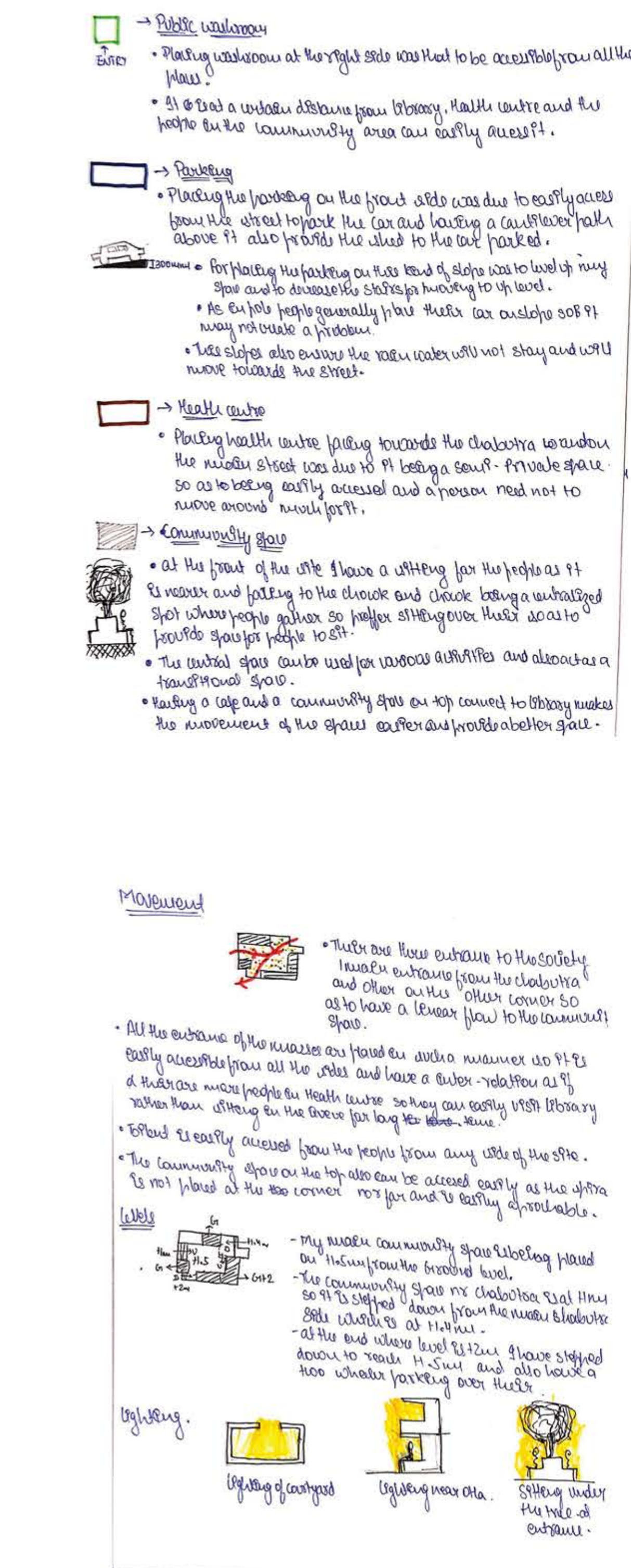
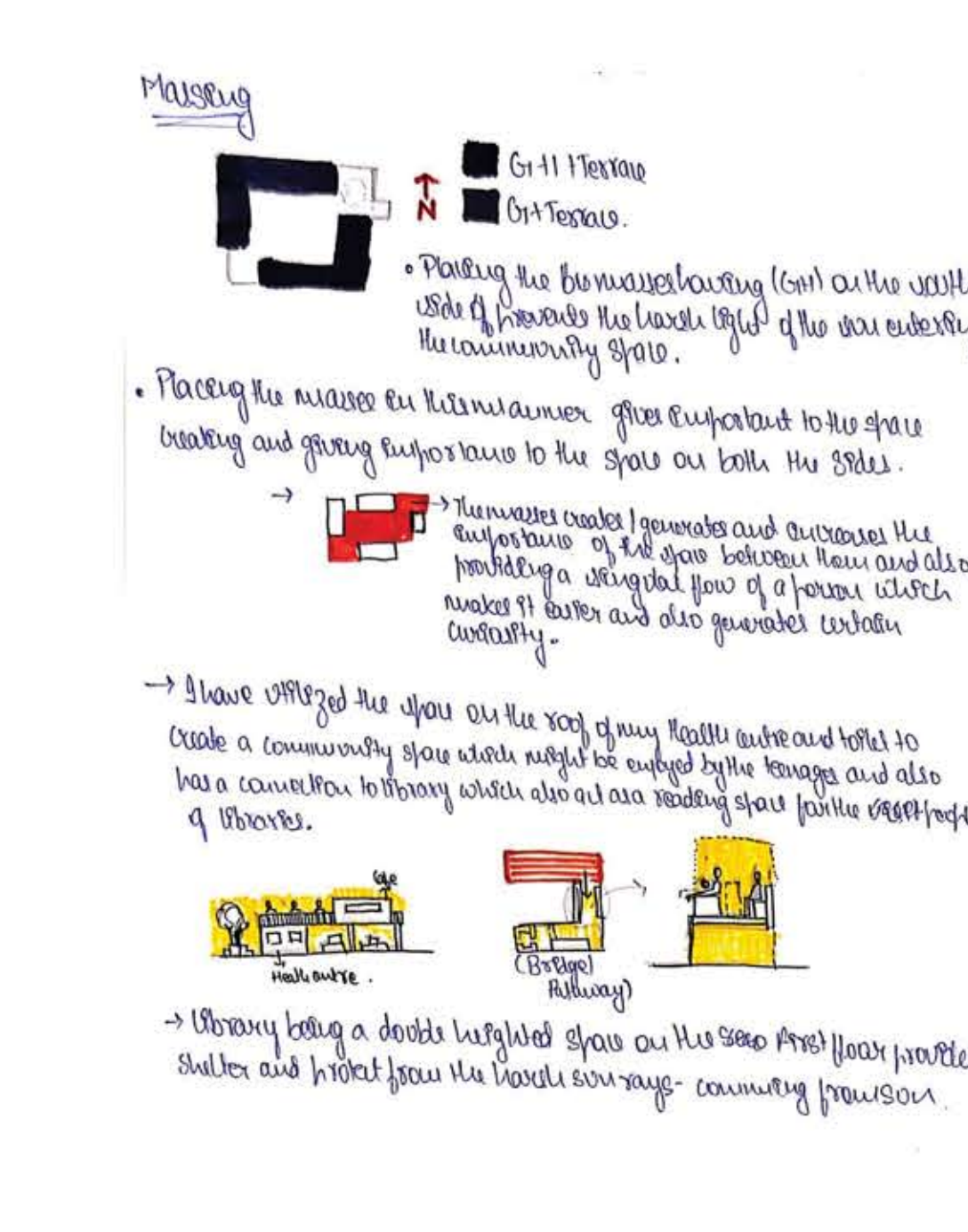
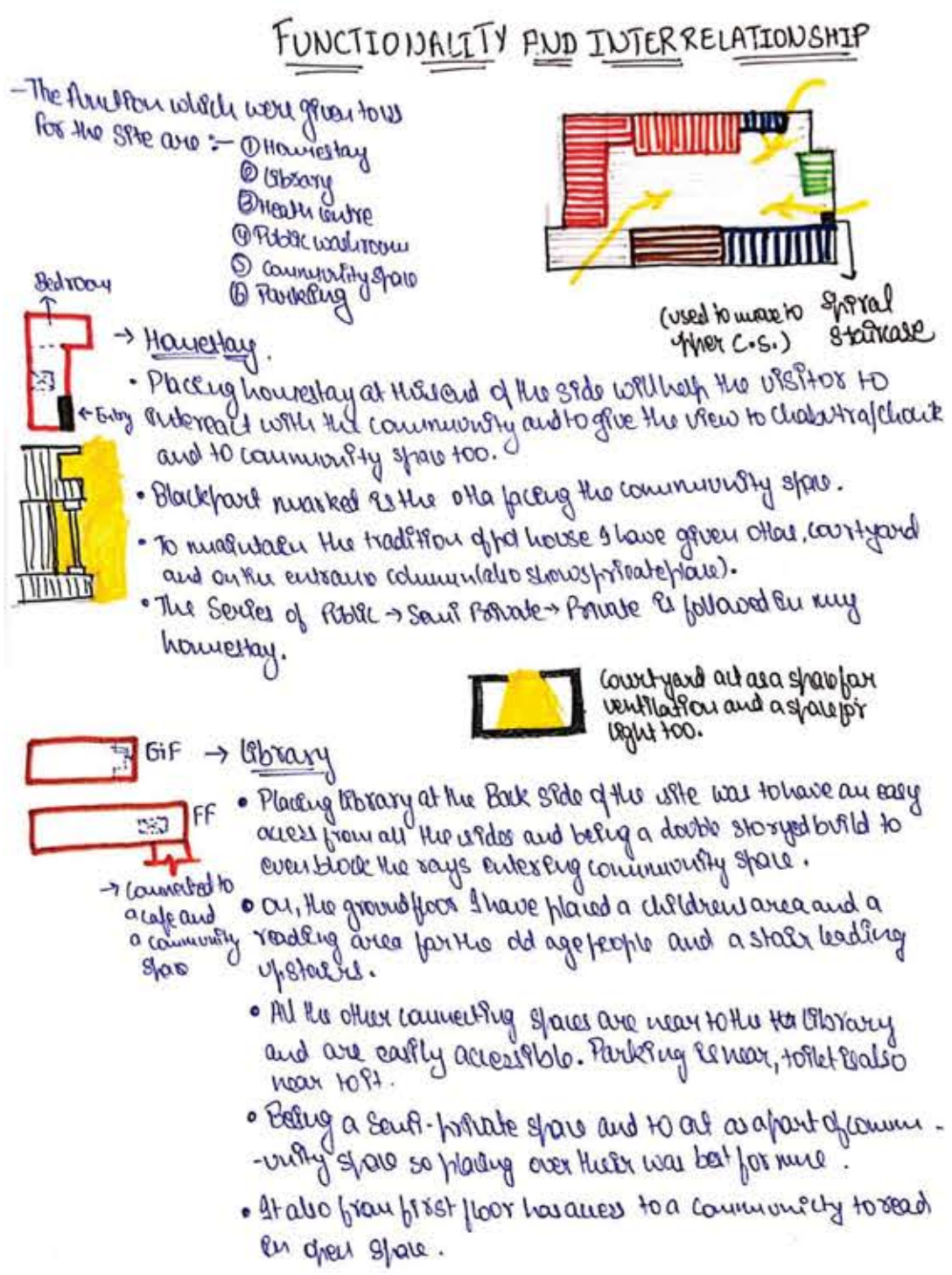
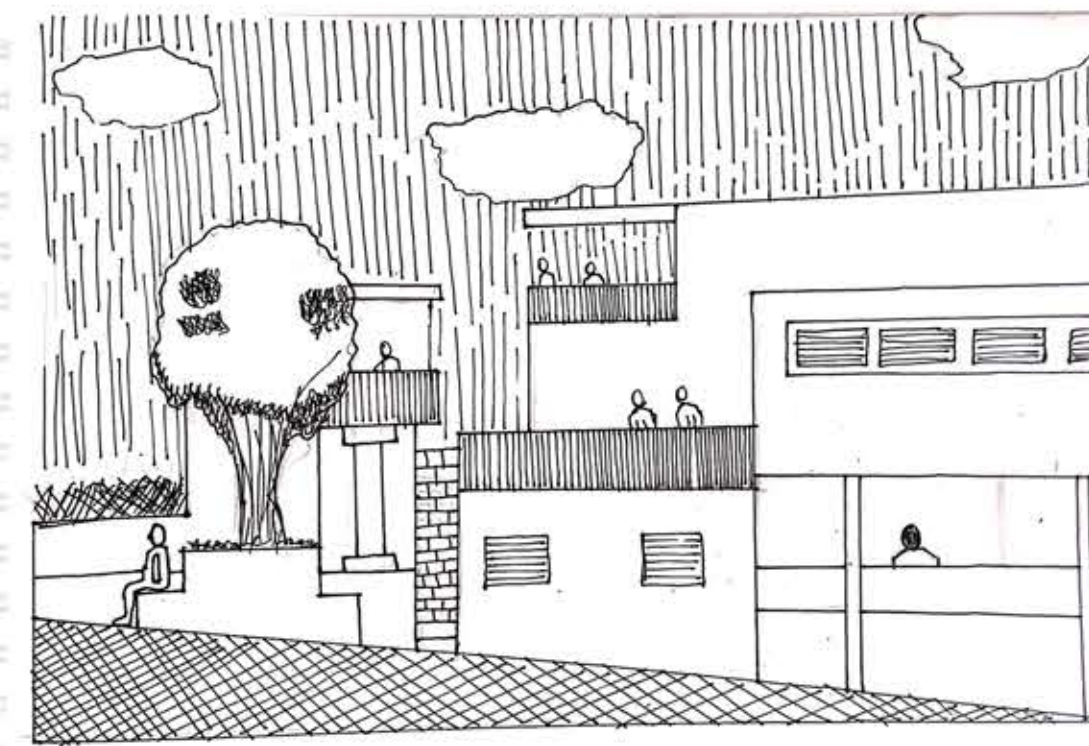


# Lively-Street

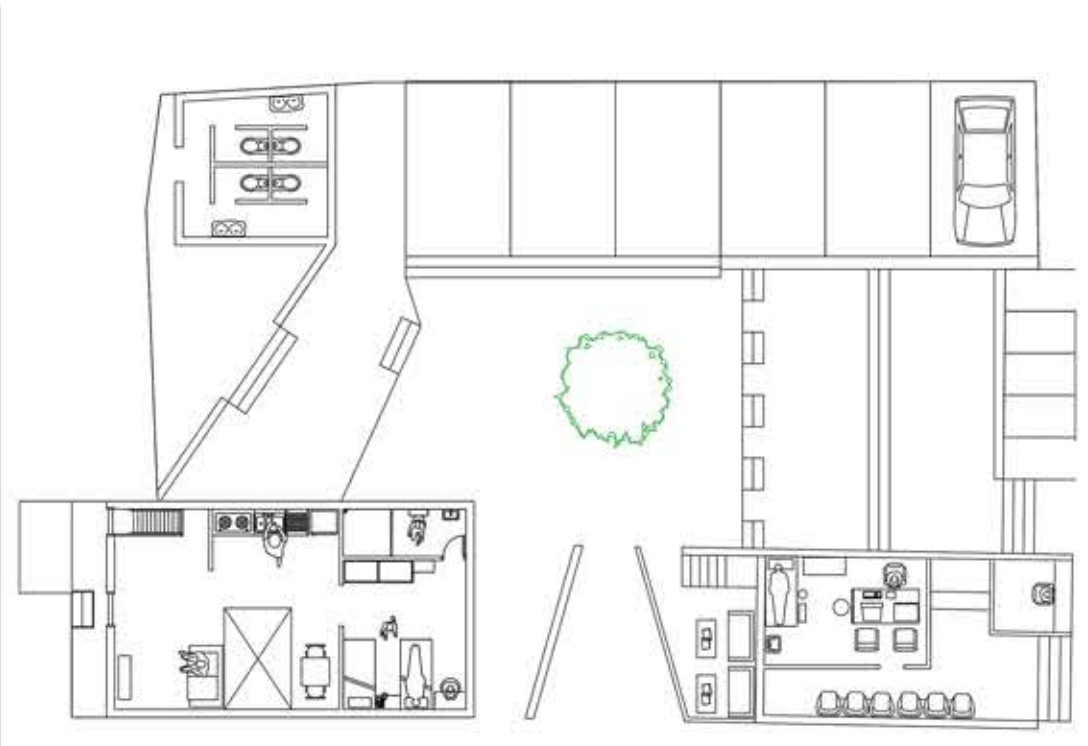
## IDEATION



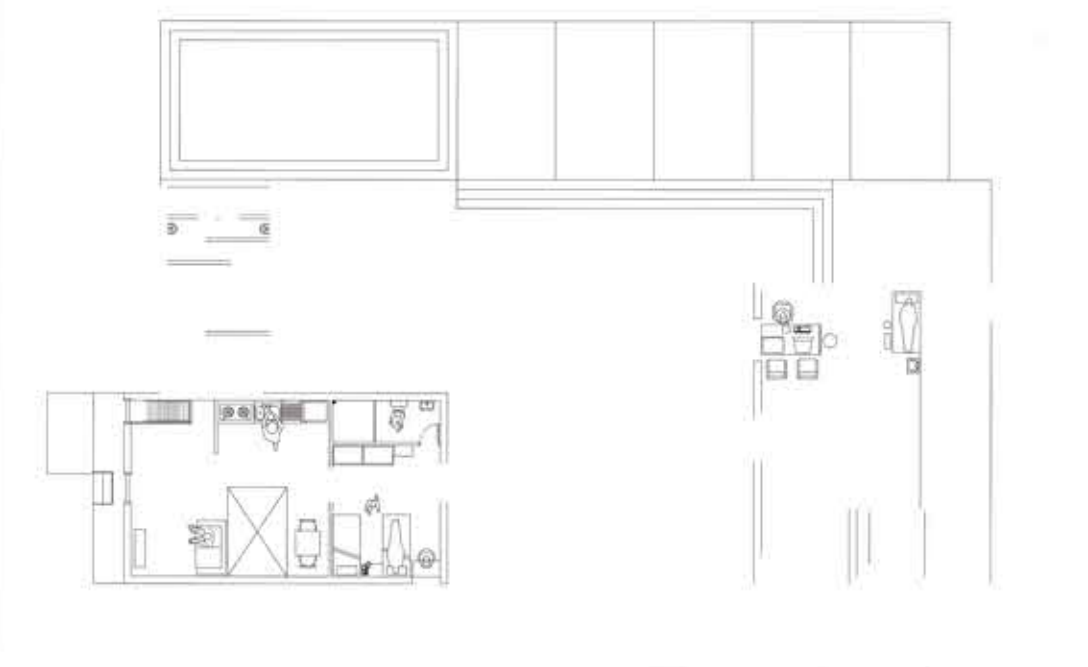
## PERSPECTIVE SKETCHES



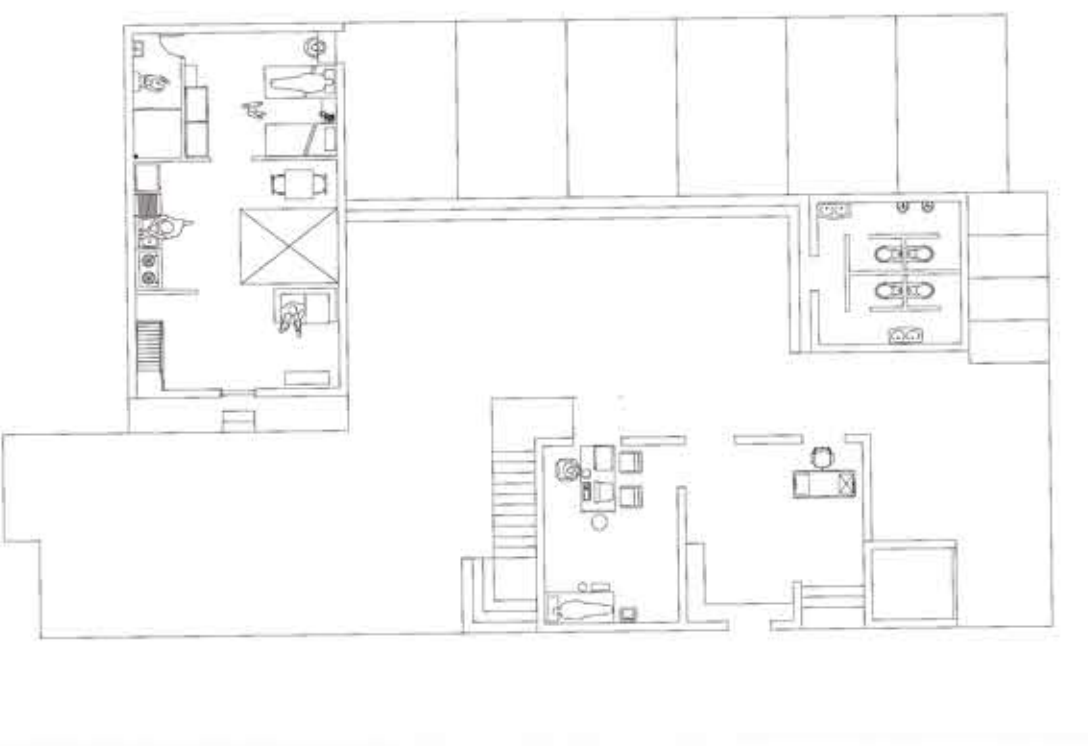
## PROCESS



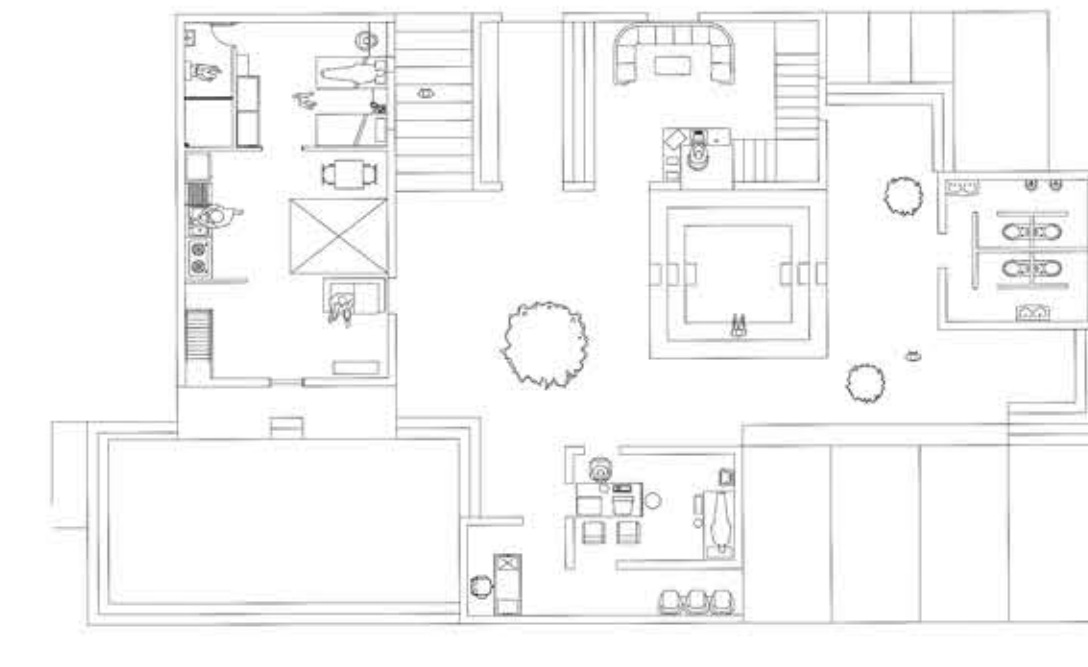
Design 1



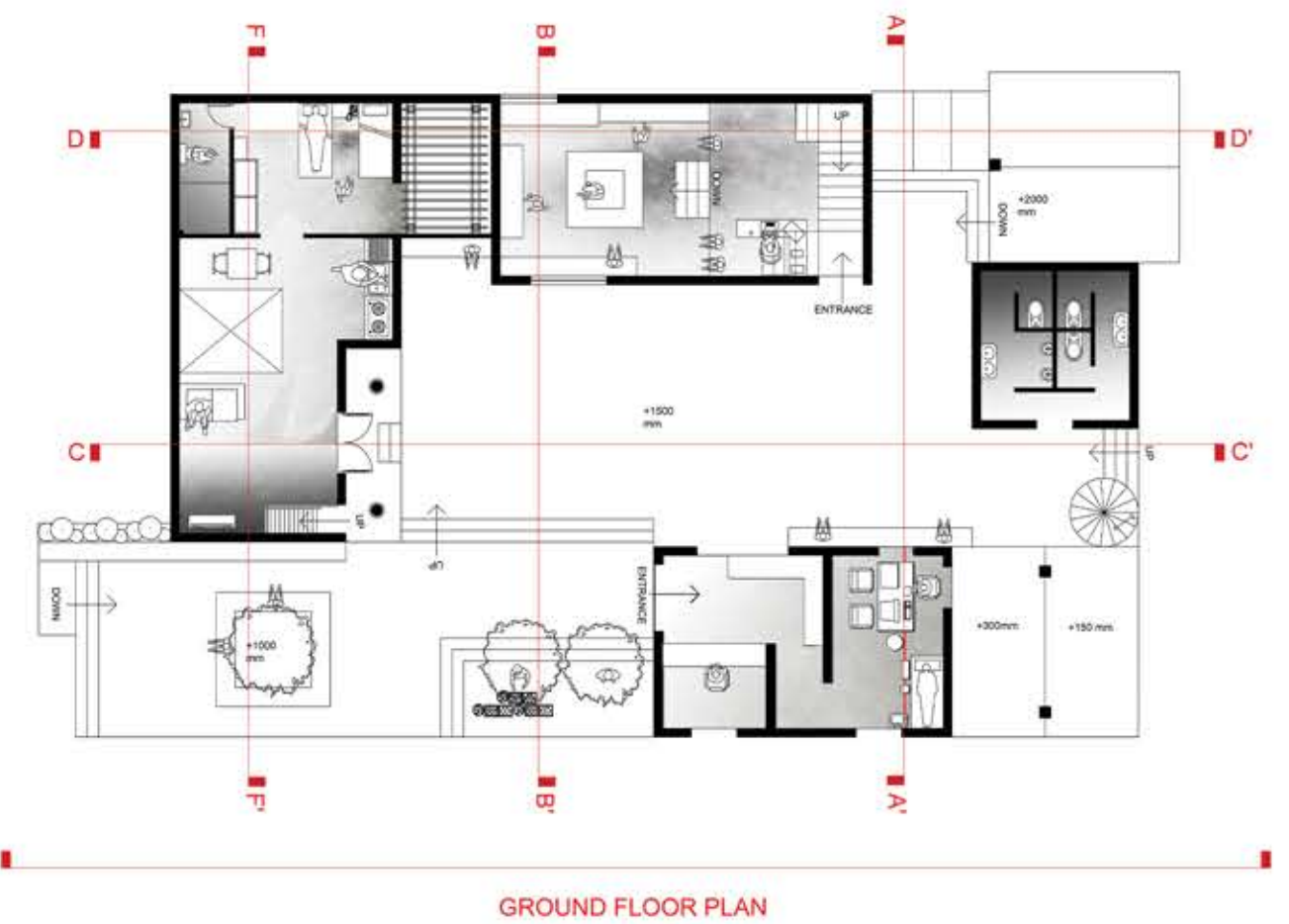
Design 3



Design 2



Design 4



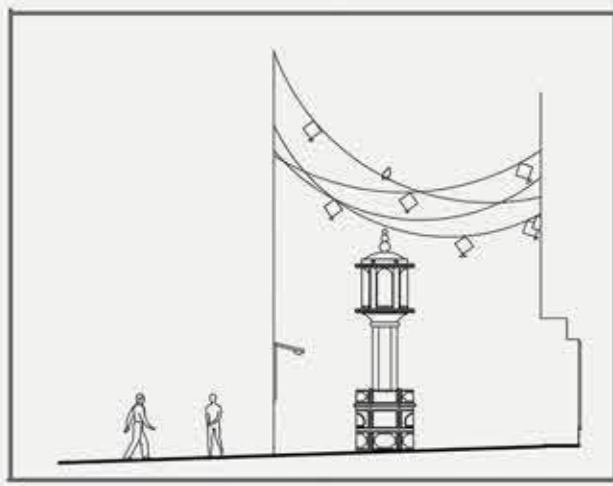
Final

## SITE PLAN





SEMESTER- II (2019-2020)



Dhal Ni Pol, Ahmedabad



BRIEF

To create a community space in Dhal ni pol facing the common chowk and chabutra. It should include a library, a medical centre, public washroom, a home stay and parking space for two and four wheelers in the busy streets of Old Ahmedabad.

CONCEPT

As the Name suggest “Dhal ni Pol” that the pol is built upon a slope. Our site was also on the slope so my main concept was to maintain the levels in the site and to connect the site with the chabutra at main end as chabutra also act a pause point which give the site much more importance.

Also thinking of the use i tried to create a space for every age group which can be used anytime.

Inculcating the ideas from the pol like multi-functional space, certain series of placing activities i tried to maintain that in my design.

Placing masses in such a way creating two pockets and giving them same importance was the thing I tried to maintain.

FACULTY

Jaydeep Bhagat  
Shweta Suhane  
Manmayee Sharma  
Prachi Patel

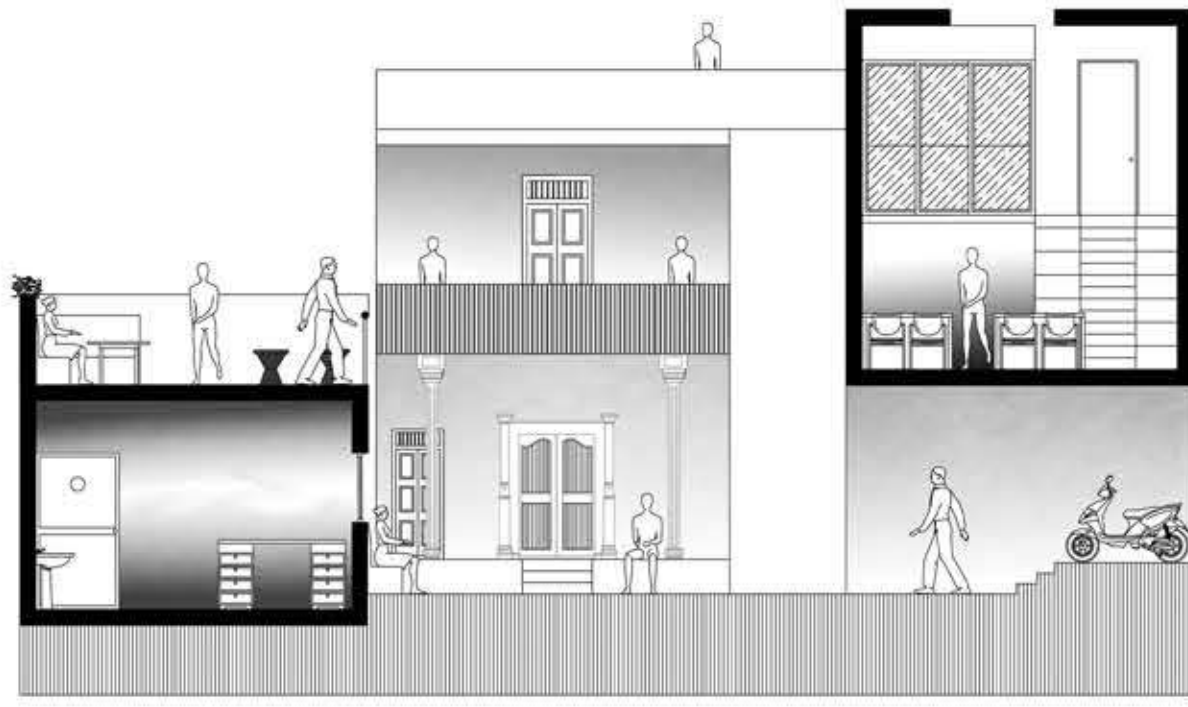


Nimesh Bansal  
19BAR019

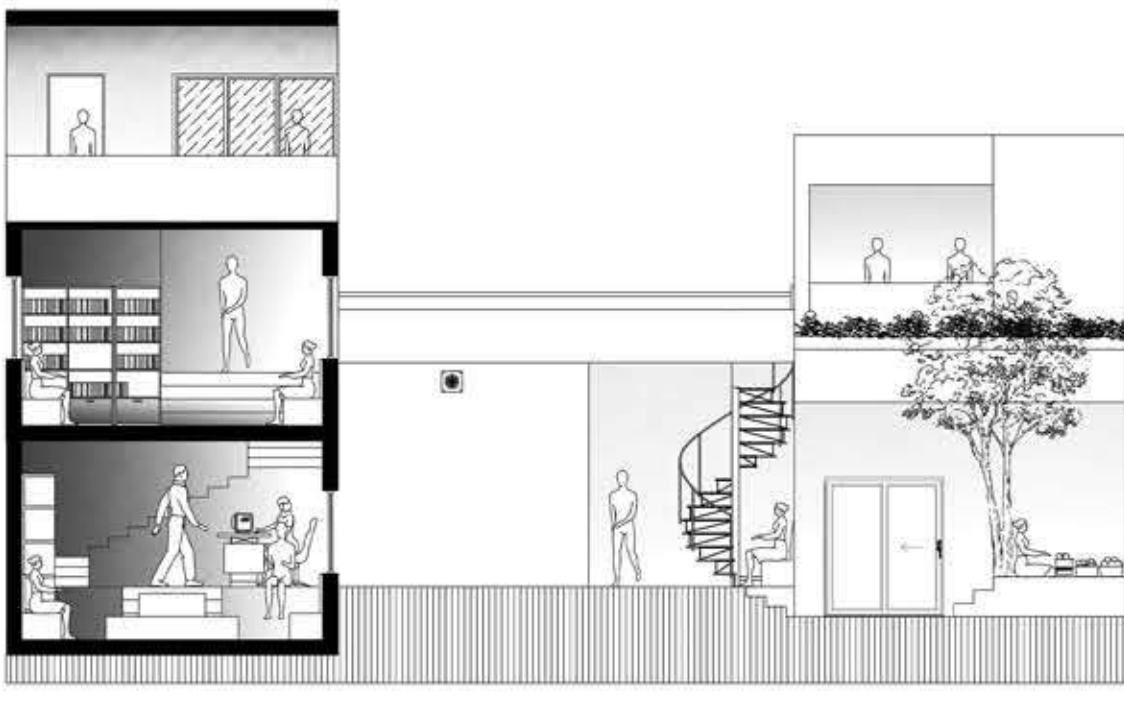


DESIGN

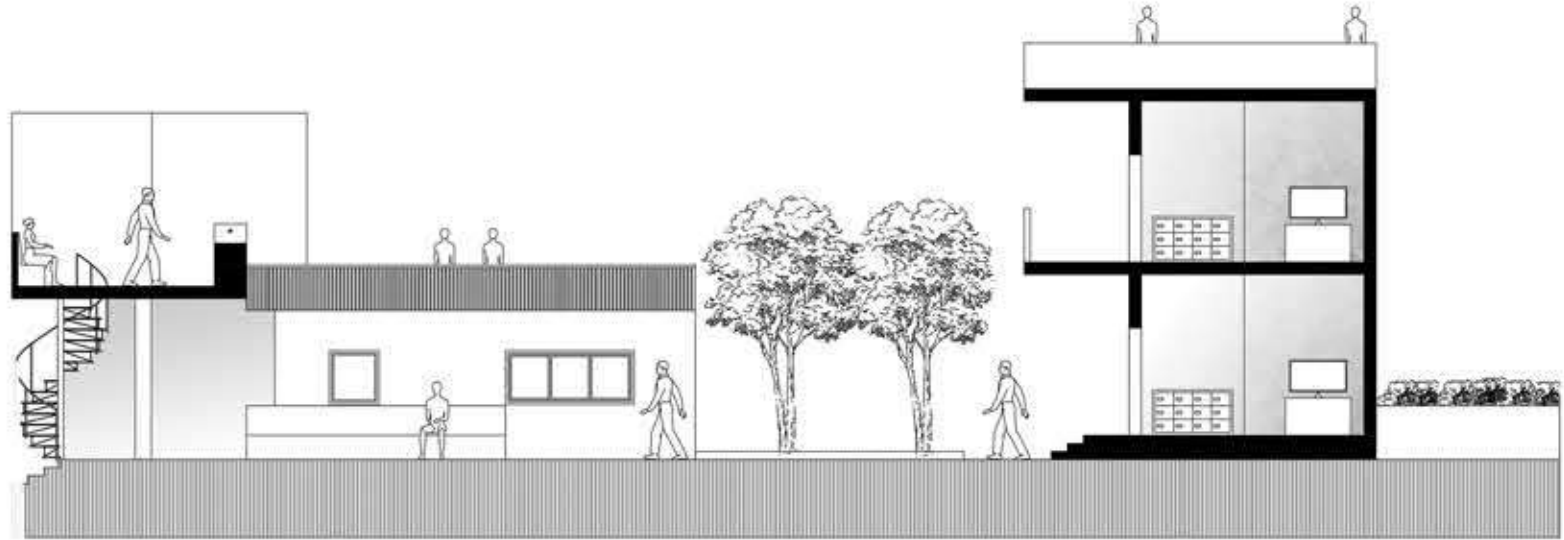
SECTIONS



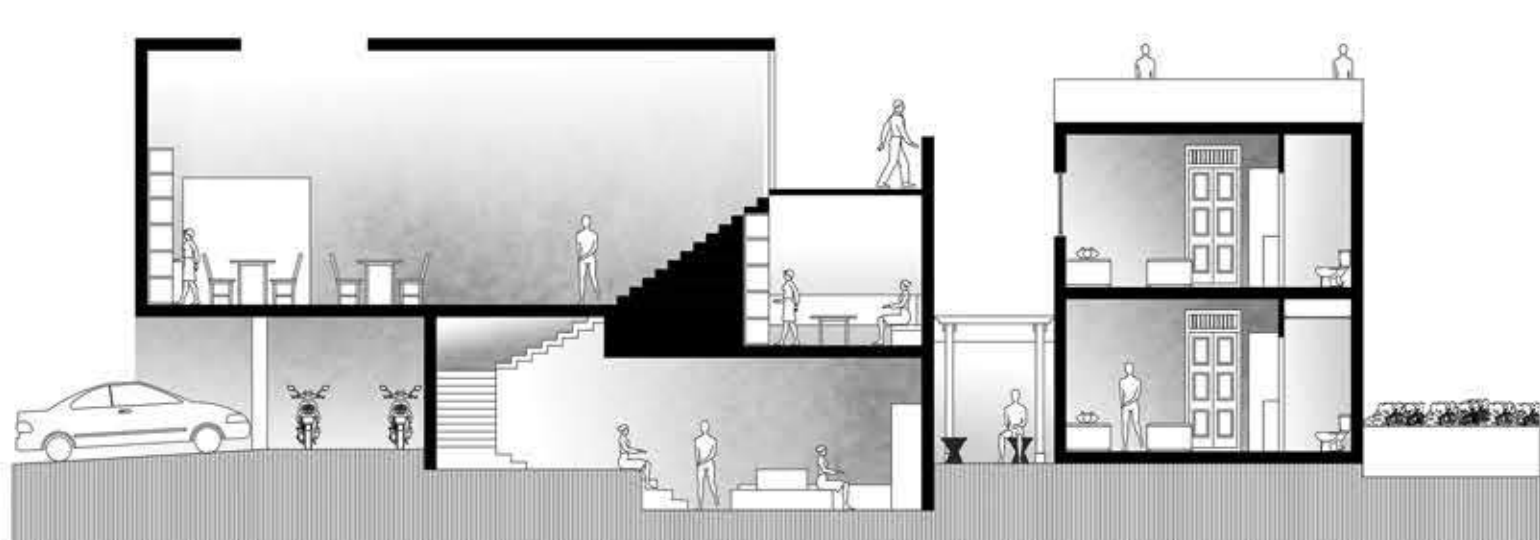
SECTION AA'



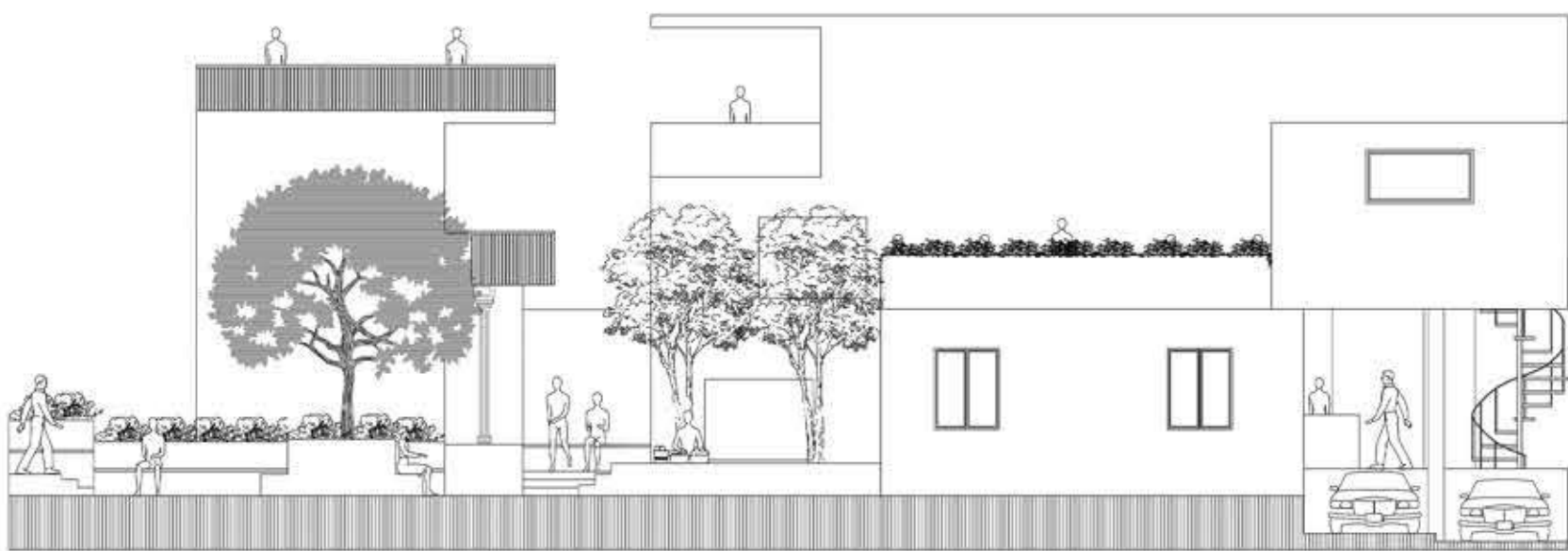
SECTION BB'



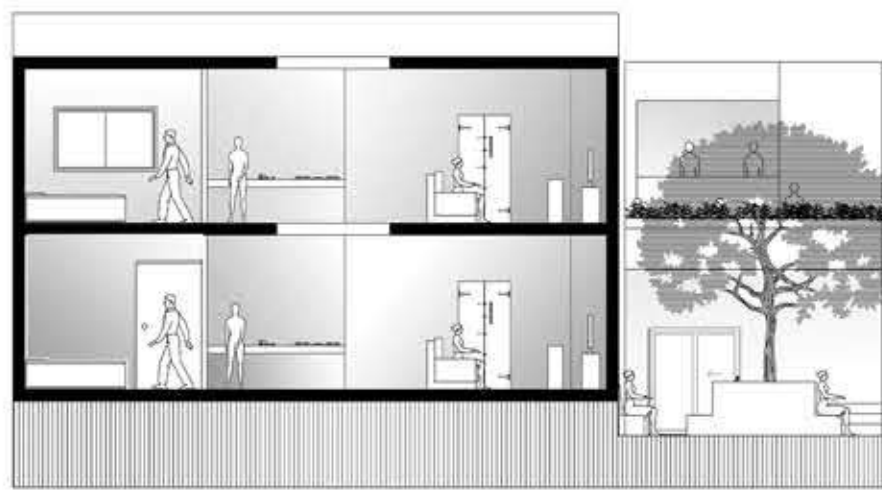
SECTION CC'



SECTION DD'

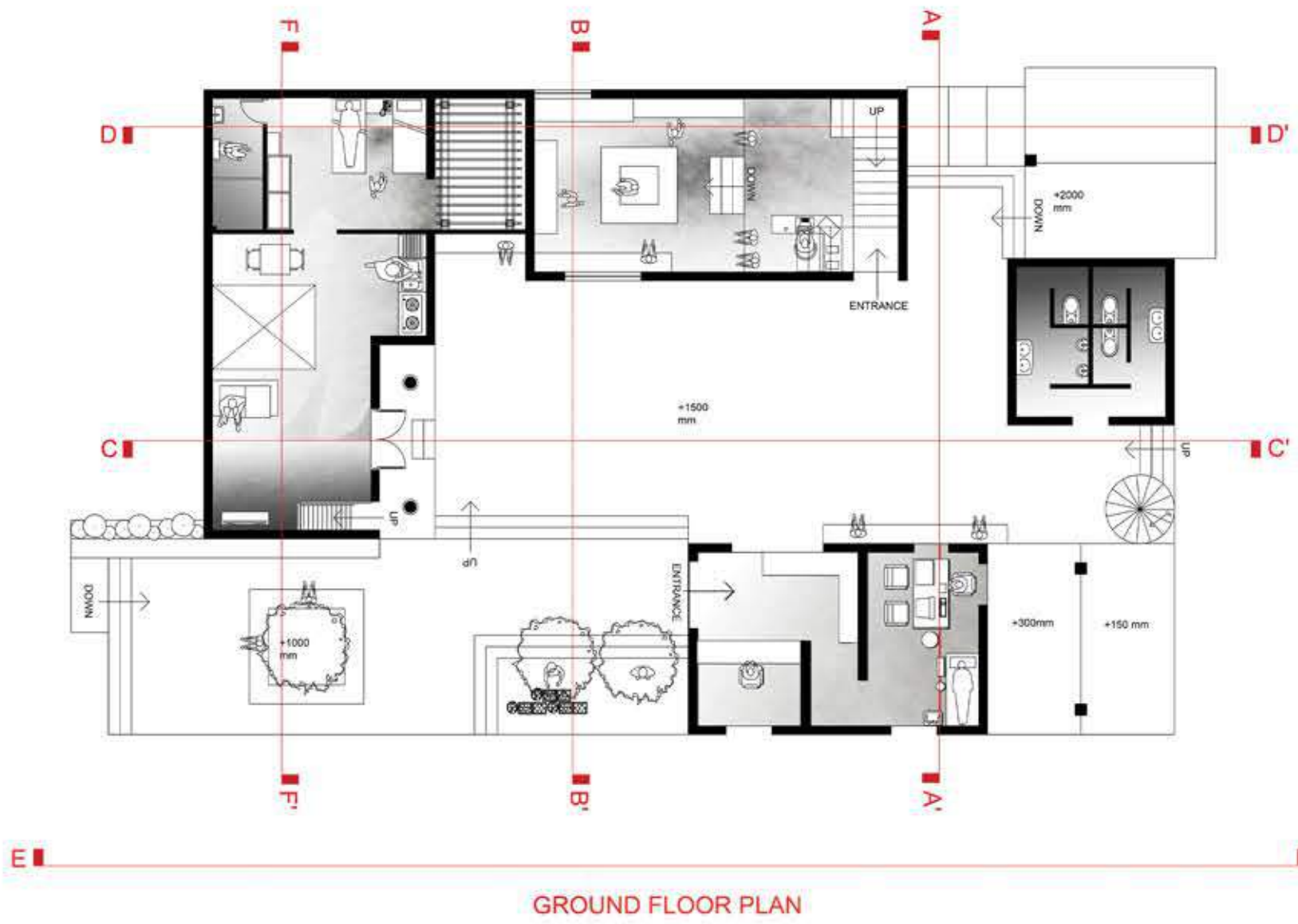


SECTION EE'

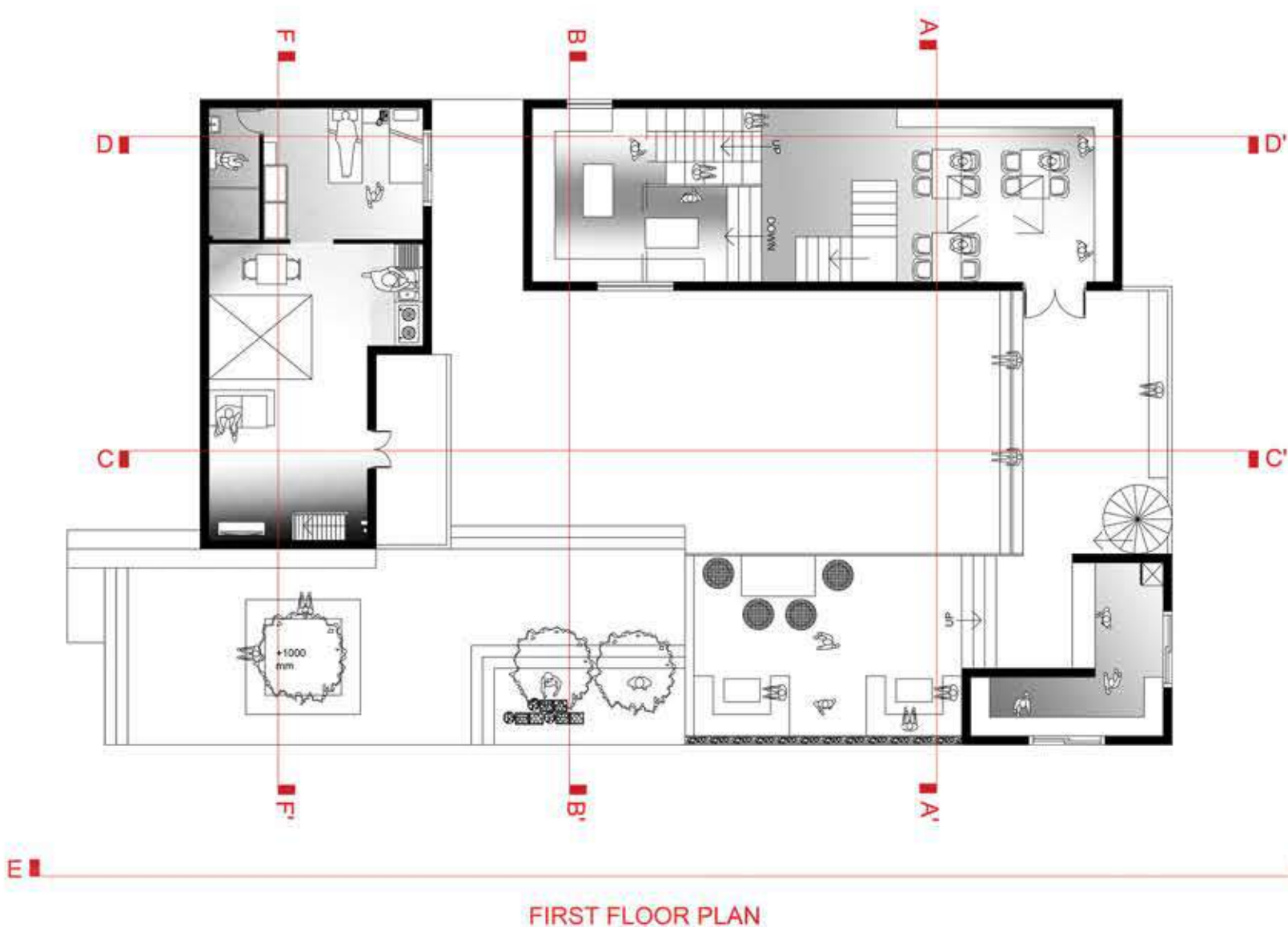


SECTION FF'

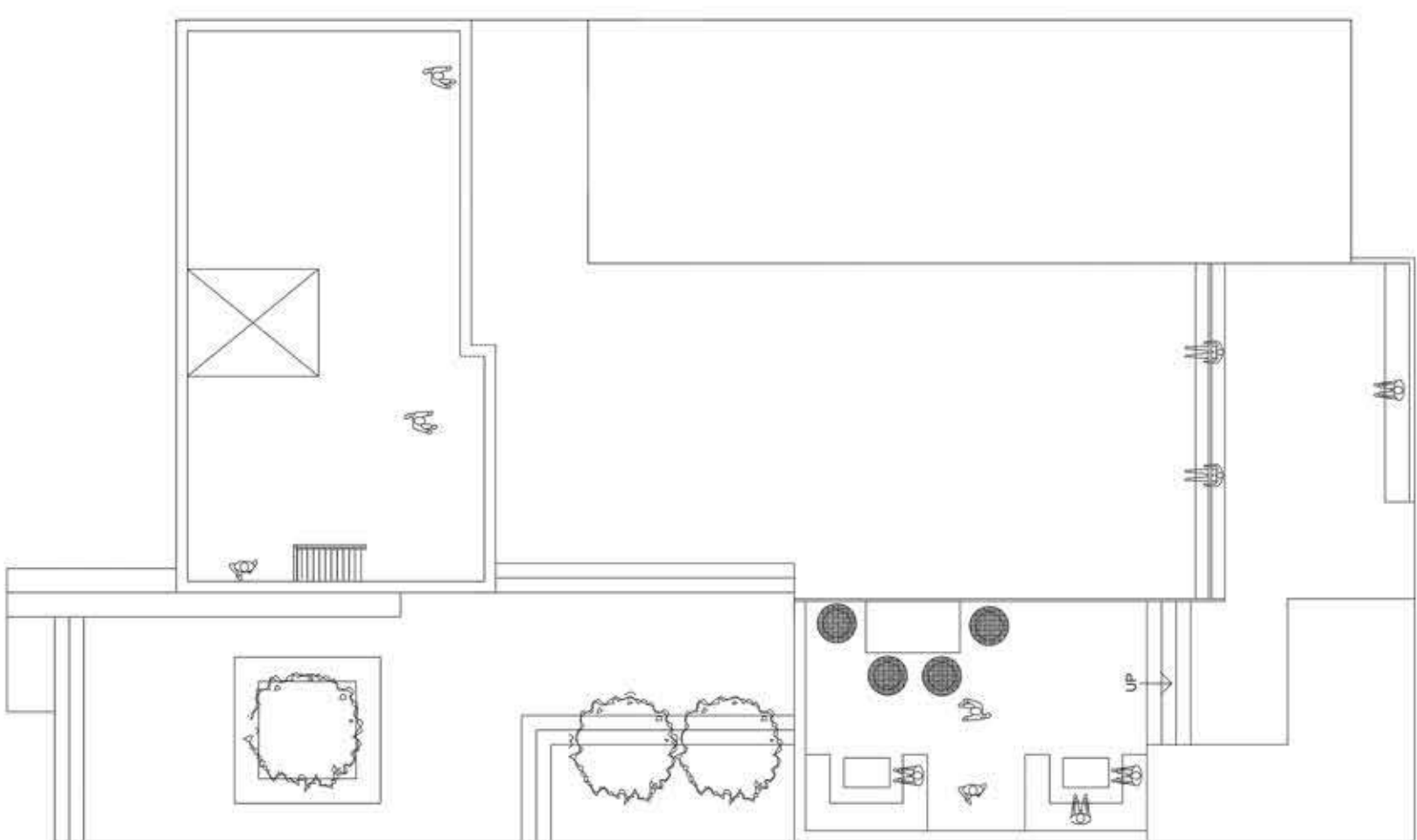
PLANS



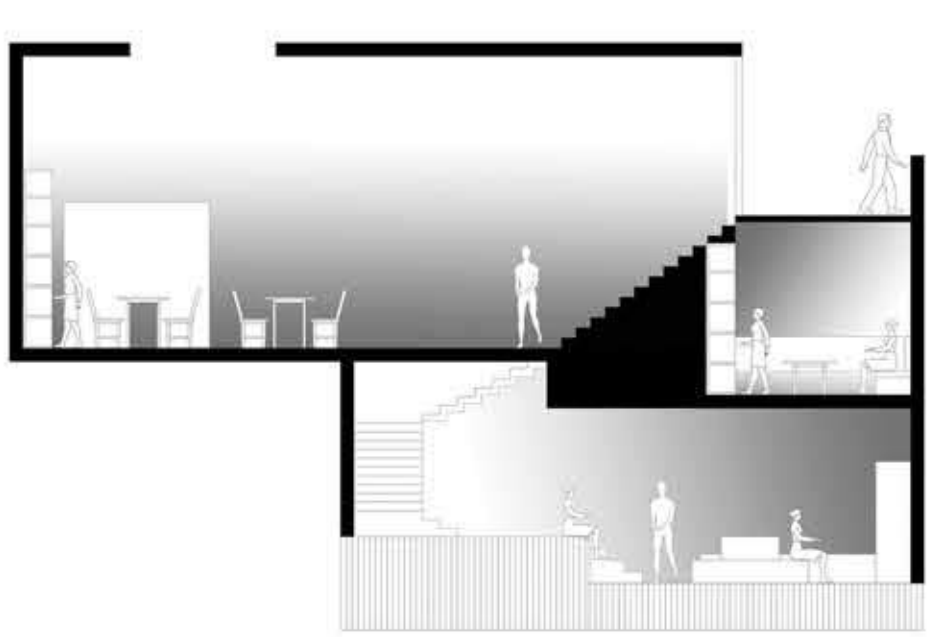
GROUND FLOOR PLAN



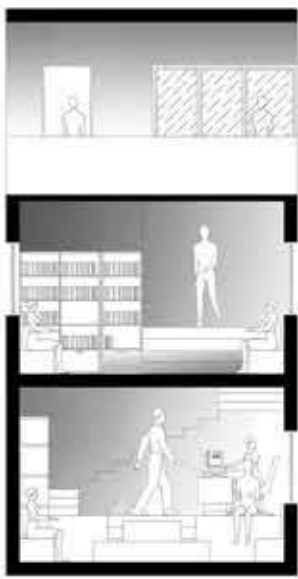
FIRST FLOOR PLAN



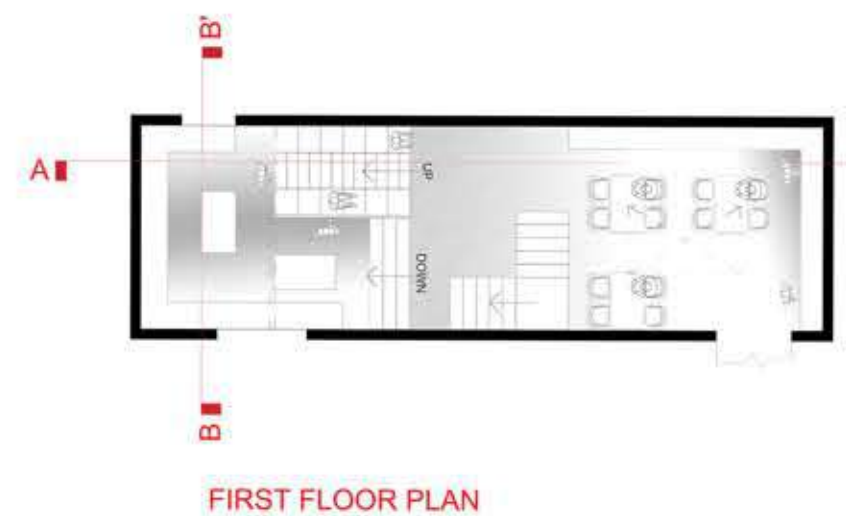
LIBRARY



SECTION AA'



SECTION BB'

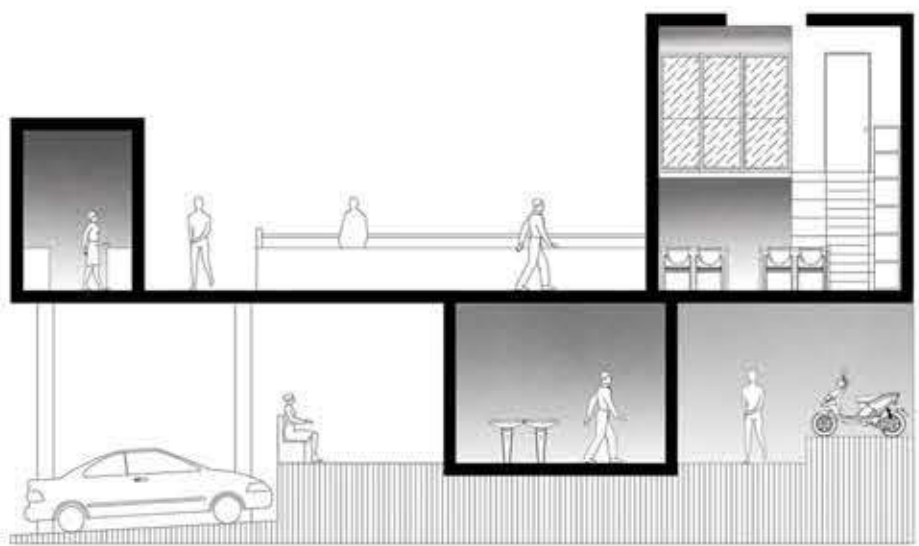


FIRST FLOOR PLAN

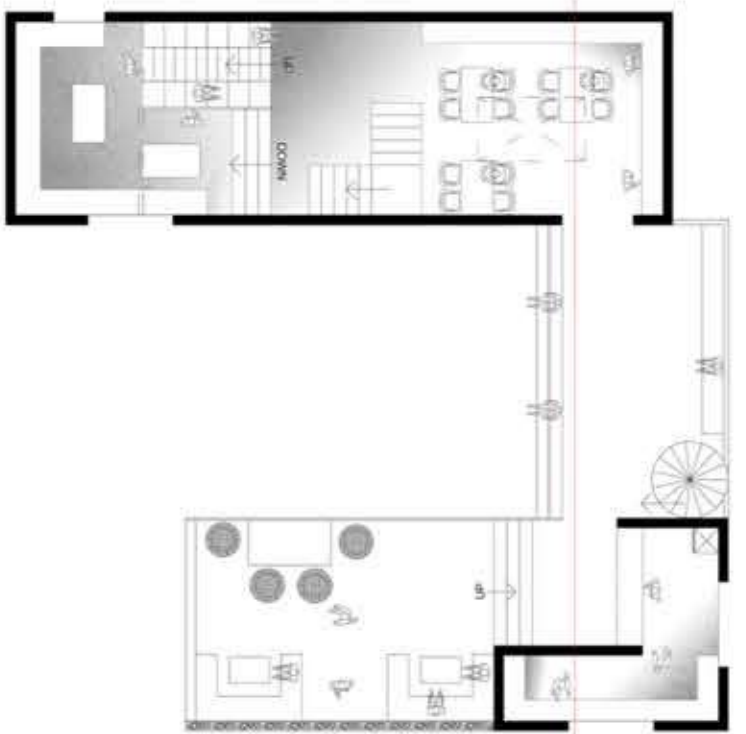


GROUND FLOOR PLAN

INTERESTING SPACE



SECTION AA'



MODEL

