



Dhal Ni Pol, Ahmedabad



BRIEF

To create a community space in Dhal ni pol facing the common chowk and chabutra. It should include a library, a medical centre, public washroom, a home stay and parking space for two and four wheelers in the busy streets of Old Ahmedabad.

CONCEPT

The layout of the site is essentially divided into three lengths of built area and the open space provides connectivity.

As we move further from the Chabutra the ground level is subtly increased and the heights of the built structures increases as well which provides a visual motivation to enter the site.

The library is the nucleus of the site and is the bridge between the public and private spaces. The medical centre, public washroom and the library creates a paramount space of interaction and a similar shaded area is found in between the homestay and library.

FACULTY

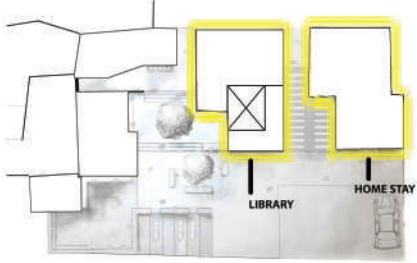
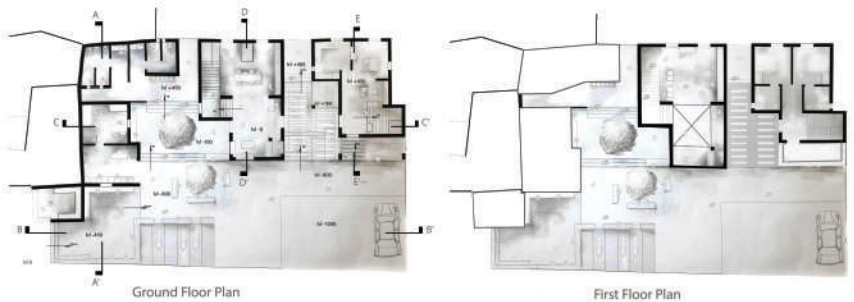
Jaydeep Bhagat
Shweta Suhane
Manmayee Sharma
Prachi Patel



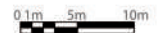
Naman Goyal
19BAR018

DESIGN

PLANS



Terrace Plan



LIBRARY



Section DD'

INTERESTING SPACE



Section EE'



Ground Floor Plan



First Floor Plan



Ground Floor Plan



First Floor Plan



SECTIONS



Section AA'

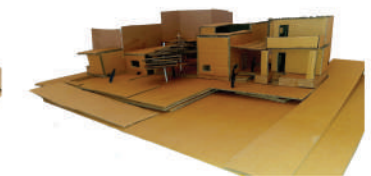
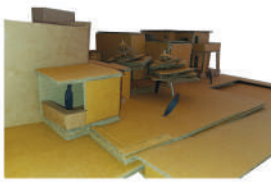
Section BB'



Section CC'



MODEL



SEMESTER- II (2019-2020)



Dhal Ni Pol, Ahmedabad



BRIEF

To create a community space in Dhal ni pol facing the common chowk and chabutra. It should include a library, a medical centre, public washroom, a home stay and parking space for two and four wheelers in the busy streets of Old Ahmedabad.

CONCEPT

The Dhal ni pol with its narrow streets, talkative otlas and a tight knit community adds a splash of colour to the old city of Ahmedabad and the Chabutra is right in the centre of it. The Chabutra is the pivotal place for movement and interaction and its location is at the heart of the pol. The site's proximity to the Chabutra helps in increasing the activity on the streets and by extension the site.
It is the people who add life into the pol and it is the site's responsibility is to enrich it and make life better.

FACULTY

Jaydeep Bhagat
Shweta Suhane
Manmayee Sharma
Prachi Patel

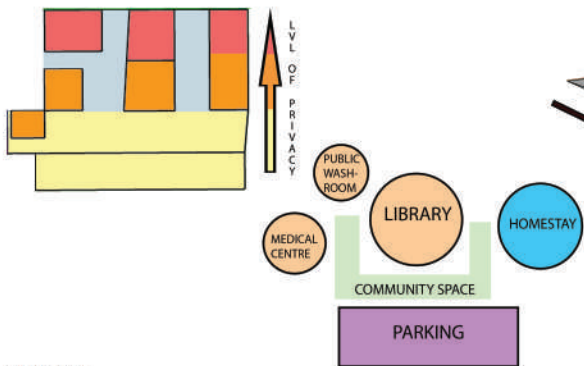
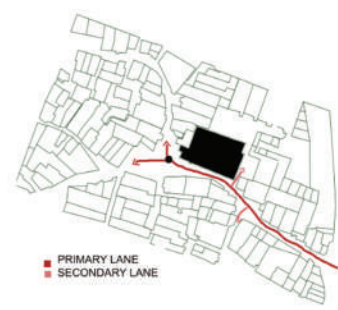
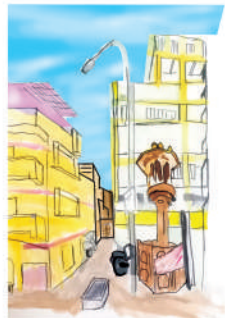


Naman Goyal
19BAR018

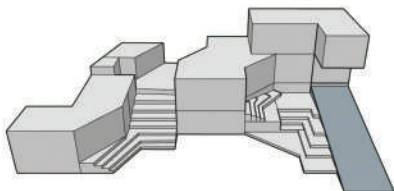


DESIGN

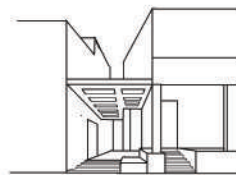
IDEATION



PROCESS



PERSPECTIVE SKETCHES



Sketch A

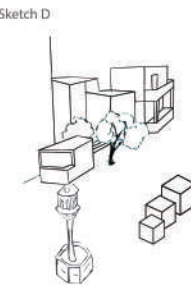


Sketch B

Model 2



Sketch C



Sketch D

SITE PLAN

