

INTRICATE DESIGN

SEMESTER-II (2019-2020)



Dhal Ni Pol, Ahmedabad



BRIEF

To create a community space in Dhal ni pol facing the common chowk and chabutra. It should include a library, a medical centre, public washroom, a home stay and parking space for two and four wheelers in the busy streets of Old Ahmedabad.

CONCEPT

My concept was "INTRICATE DESIGN". The pol is designed in such a manner that the narrow streets are shaded during the whole year. Also the architectural elements which are present complemented the narrow street indirectly resulting into a community space where people of the pol spend most of their time.

Also the facade's wooden intricacy helped in protection from thermal radiation as well as depicts the rich cultural heritage.

I tried redesigning the different elements of pol in my language and tried giving green spaces. I also wanted to give an experience that though people are actually inside they feel that they are outside.

FACULTY

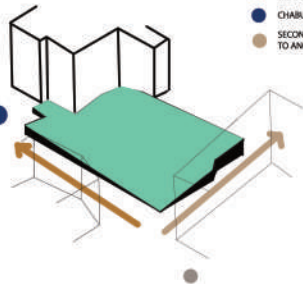
Jaydeep Bhagat
Shweta Suhane
Manmayee Sharma
Prachi Patel



Sanjana Joshi
19BAR010



IDEATION



- ENTRANCE OF DHAL NI POL.
- MAIN STREET
- CHABUTRA
- SECONDARY STREET LEADING TO ANOTHER SMALL CHOWK AT BACK



↑ PRIVACY INCREASES

CONCEPT

→ THE BEST LINKED IN DHAL NI POL IS THE MAIN STREET. SO I TRIED DESIGNING OPEN SPACE AS COMPARTMENT AREA.

→ THE POL HOUSES ARE SHOWN THE TYPICAL HERITAGE AND CULTURE WHICH IS DELETED IN THEM BY UNDESIGNED SPACING.

→ THE TRADITIONAL POL HOUSES WHO SLEEP OVER THE ROOF DURING THE WINTER SEASON BY USING THIS CONCEPT I ALSO WANTED TO HARVEST WATER.

→ ALSO I WANTED TO DESIGN THE BUILDING MAKE IT MORE PAVED AND ALSO I TRIED CONNECTING TO A CENTRAL SPACE.

→ ALSO I TRIED TO DESIGN THE BUILDING MAKE IT MORE PAVED AND ALSO I TRIED CONNECTING TO A CENTRAL SPACE.

→ ALSO I TRIED TO DESIGN THE BUILDING MAKE IT MORE PAVED AND ALSO I TRIED CONNECTING TO A CENTRAL SPACE.

→ ALSO I TRIED TO DESIGN THE BUILDING MAKE IT MORE PAVED AND ALSO I TRIED CONNECTING TO A CENTRAL SPACE.



sitting created in a bay window

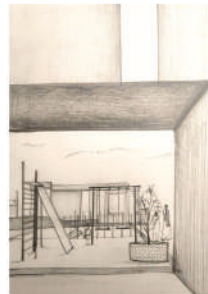


redesigning ota under a tree



example of water harvesting channel

PERSPECTIVE SKETCHES



PROCESS



Model 1



Model 2



Model 3

SITE PLAN



SEMESTER-II (2019-2020)



Dhal Ni Pol, Ahmedabad



BRIEF

To create a community space in Dhal ni pol facing the common chowk and chabutra. It should include a library, a medical centre, public washroom, a home stay and parking space for two and four wheelers in the busy streets of Old Ahmedabad.

CONCEPT

My concept was "INTRICATE DESIGN". The pol is designed in such a manner that the narrow streets are shaded during the whole year. Also the architectural elements which are present complimented the narrow street indirectly resulting in a community space where people of the pol spend most of their time. Also the facade wooden intricacy helped in protection from thermal radiation as well as depicts the rich cultural heritage. I tried redesigning the different elements of pol in my language and tried giving green spaces. I also wanted to give an experience that though people are actually inside they feel that they are outside.

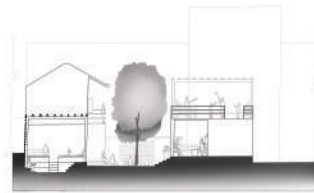
FACULTY

Jaydeep Bhagat
Shweta Suhane
Manmayee Sharma
Prachi Patel

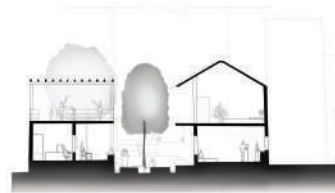


Sanjana Joshi
19BAR010

SECTIONS



Section BB'

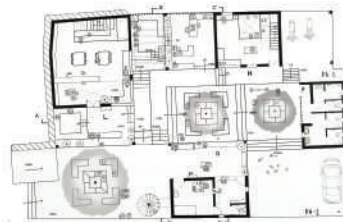


Section CC'

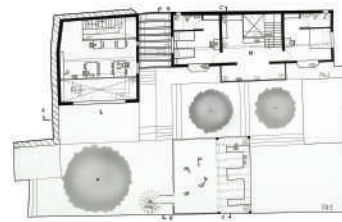


Section AA'

PLANS



Ground Floor Plan



First Floor Plan



Terrace Plan

LIBRARY



Section AA'



First Floor plan

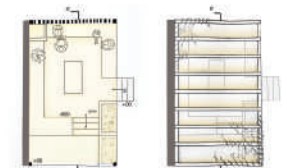


Ground Floor plan

INTERESTING SPACE



Section AA'



Ground Floor plan

Roof plan

MODEL

