



 **NIRMA**  
UNIVERSITY

INSTITUTE OF PHARMACY  
NAAC ACCREDITED 'A+' GRADE

# PROSPECTUS 2024

GSIRF  
ranking 2023  
**GR#1**  
with five star

  
NATIONAL BOARD  
of ACCREDITATION

Top Pharmacy Institute  
**AIR # 37**  
Ranked by  
**NIRF**  
India ranking 2023  
PHARMACY INSTITUTE OF PHARMACY STUDIES  
NIRMA, GUAN, INDIA

# VISION

---

Shaping a better future for mankind by developing effective and socially responsible individuals and organizations.

# MISSION

---

Nirma University emphasizes the all-round development of its students. It aims at producing not only good professionals, but also good and worthy citizens of a great country, aiding in its overall progress and development.

It endeavors to treat every student as an individual, to recognize their potential and to ensure that they receive the best preparation and training for achieving their career ambitions and life goals.

# QUALITY STATEMENT

---

To develop high quality professionals who reflect and demonstrate values that the University stands for, through innovation and continuous improvement in facilitation of learning, research and extension activities.

# CORE VALUES

## **Student Centricity**

- Emphasize on holistic development of the students through extra and co-curricular activities
- Pursue student-centered teaching-learning process
- Focus on employability and entrepreneurship
- Nurture lifelong learning skills
- Use of ICT tools and technology

## **Contribution to the Society**

- Align curricula and pedagogy to cater to societal needs and demands
- Conduct applied research to address organizational and societal problems

## **Quest for Academic Excellence**

- Develop and retain outstanding employees
- Use inter-disciplinary approach in the teaching-learning process and research
- Think creatively and do relevant research
- Establish strong linkages with the industry, academia, research organizations, alumni and civil society



# CONTENTS

• Nirma Education and Research Foundation	2
• Nirma University	3
• Board of Governors	4
• Institute of Pharmacy, Nirma University	5
• PEO & POs for BPharm and MPharm Program	8
• Academic Infrastructure	9
• Research Infrastructure	13
• Amenities	14
• Departments	16
• Academic Program	22
• Unique Features	23
• BPharm Admission	24
• PharmD Admission	25
• MPharm Admission	26
• International Students Admission	27
• PhD & Post-doctoral Admission	28
• Academic Excellence	29
• Student Support	30
• Student Progression	32
• Placement Cell	35
• Collaborations	37
• Professional Outreach Activities	38
• Institute Advisory Committee	40
• Faculty Members	41

# NIRMA EDUCATION AND RESEARCH FOUNDATION



Renowned industrialist and philanthropist Padma Shri Dr Karsanbhai K Patel, the founder of the Nirma Group of Industries, established the Nirma Education and Research Foundation (NERF) in the year 1994 with a vision to promote higher education and provide excellent educational facilities to the youth in India. In 1995, Nirma Institute of Technology – affiliated to Gujarat University – was established by the NERF. It was followed by the establishment of Nirma Institute of Management in 1996.

In the year 2003, the Government of Gujarat approved the proposal of the NERF to found the Nirma University, Ahmedabad. Hence, Nirma University was established under a special Act passed by the Gujarat State Legislative Assembly. The University Grants Commission (UGC) duly recognized the University under the Section 2 (f) of the UGC Act.

The NERF is equally committed to school education. It strongly believes in the fact that a strong foundation is a prerequisite for education. With this philosophy, it runs two schools 'Nirma Vidyavihar' at Bodakdev and Chharodi campus in Ahmedabad, where the emphasis is laid on to provide value-based education clubbed up with innovative educational practices.





## NIRMA UNIVERSITY

Nirma University, Ahmedabad has been established in the year 2003 as a statutory university under the Gujarat State Act by the initiative of the Nirma Education & Research Foundation (NERF). The University is a value-driven, research-oriented and student-centered not-for-profit state private university.

The University and its constituent institutes are highly ranked by different ranking agencies. The University is recognized by the University Grants Commission (UGC) under section 2(f) of the UGC Act. Nirma University has been accredited with Grade “A+” by National Assessment and Accreditation Council (NAAC) in 2022. Nirma University has also been awarded the Centre of Excellence (CoE) status by the Government of Gujarat in the International Conference of Academic Institutions, part of the Vibrant Gujarat Education Summit 2022. Nirma University is a member of the Association of Indian Universities (AIU) and the Association of Commonwealth Universities (ACU). The University has SIRO (Scientific and Industrial Research Organization) recognition from DSIR, Department of Science and Technology, Government of India. Dr. Karsanbhai K. Patel, Chairman, Nirma Group of Companies and Chairman, NERF is the President of the University.

Spread across the sprawling lush green 115-acres campus, the University has a host of institutes, departments and centers, including Institute of Technology, Institute of Management, Institute of Pharmacy, Institute of Science, Institute of Law, Institute of Architecture and Planning, Institute of Commerce, Institute of Design, Institute of International Study, Faculty of Doctoral Studies and Research, Directorate of Research and Innovation, Centre for Continuing Education, Centre for Entrepreneurship, Centre for Advanced Instrumentation, Centre for Robotics and Automation and Centre for Excellence in Data Science. All the institutions offer undergraduate, postgraduate, doctoral and post-doctoral programmes which are rated high by industry, business magazines and by the students.

Today the campus vibrates with not only world class curricular activities but also with myriad activities like international conventions symposia, conferences, student competitions, conclaves, short-term industry relevant Programmes, cultural activities, etc. The facility helps them to carry out cutting edge interdisciplinary research of national and international importance.



# BOARD OF GOVERNORS

## **Dr. Karsanbhai K. Patel**

Chairman, Nirma Limited,  
Chairman, Nirma Education and Research Foundation,  
President, Nirma University

## **Shri. K. K. Patel**

Vice President, Nirma University

## **Shri Rakeshbhai K. Patel**

Vice Chairman, Nirma Limited

## **Shri Hirenbhai K. Patel**

Managing Director, Nirma Limited

## **Dr Pankajbhai Patel**

Chairman and Managing Director  
Zydus Cadila Health Care, Ahmedabad

## **Prof. D. P. Agrawal**

Former Chairman  
UPSC, New Delhi

## **Prof. Sangita Shroff**

Dean, Faculty of Design,  
Nirma University

## **Dr Anup K. Singh**

Director General, Nirma University

## **Mukesh Kumar, IAS**

Principal Secretary,  
Dept. of Higher and Technical Education,  
Government of Gujarat, Gandhinagar

## **Shri R. D. Shah**

Chartered Accountant,  
Trustee, Nirma Education and Research  
Foundation

## **Dr P. N. Bhagwati**

Industrialist and Educationist, Chairman,  
Bhagwati Sphero Cast Limited

## **Shri Kamalbhai Trivedi**

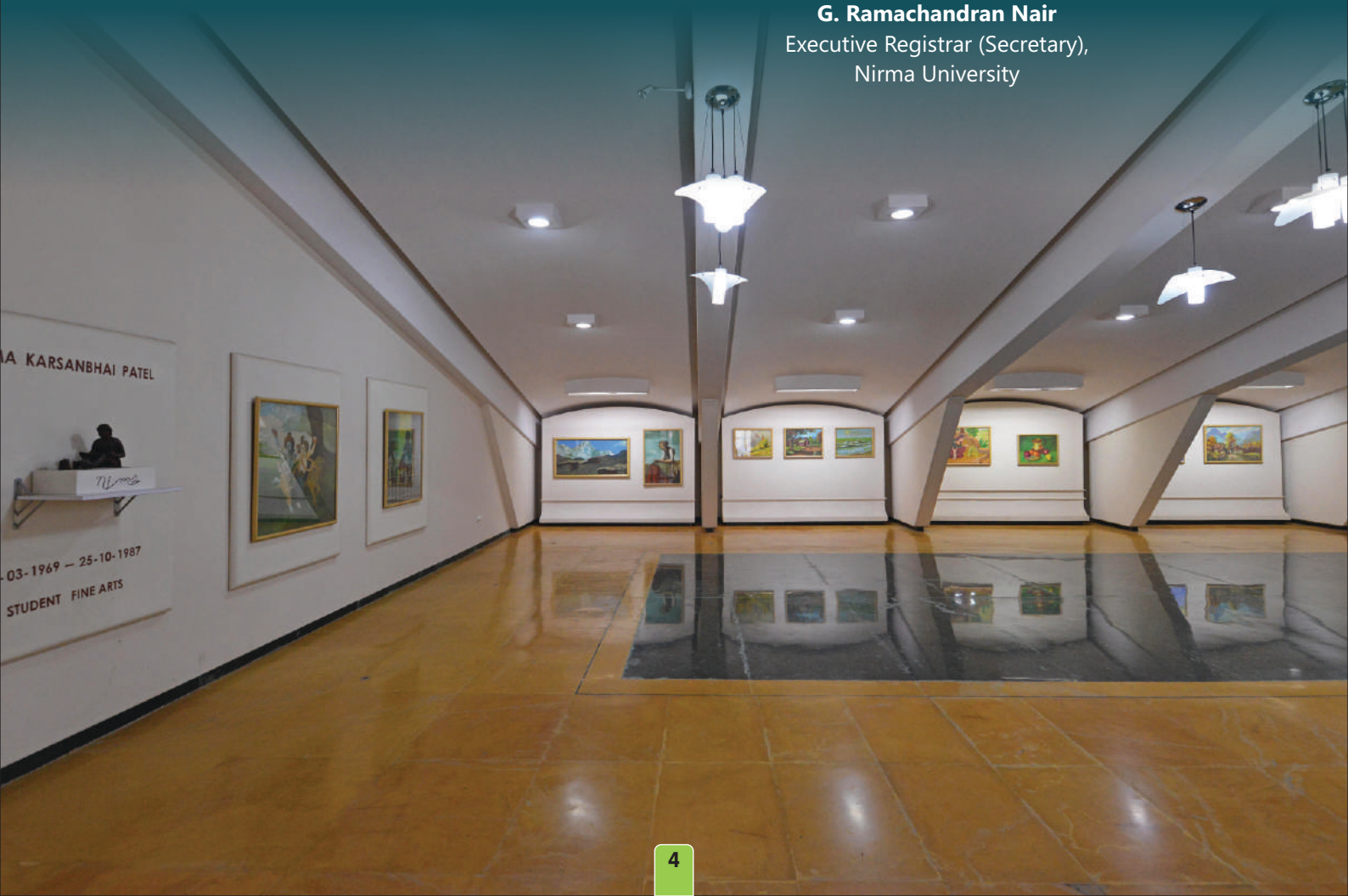
Advocate General Gujarat High Court,  
Ahmedabad

## **Prof. Sarat Dalai**

Dean, Faculty of Science, Nirma University

## **G. Ramachandran Nair**

Executive Registrar (Secretary),  
Nirma University



# Institute of Pharmacy, Nirma University

## Vision

Striving to excel in pharmaceutical education, research & innovation to develop outstanding professionals catering to the health care needs of the humankind.

## Mission

The institute aims to develop employable students, researchers and entrepreneurs by inculcating critical thinking, problem solving ability, ethical values and leadership skills. Institute provides vibrant environment for continuous learning by strengthening industrial collaboration for developing competent professionals.



## INSTITUTE OF PHARMACY

Institute of Pharmacy was established in the year 2003 under Nirma University with the aim of developing able professionals in the field of pharmaceutical sciences. In a short span of time, it has become one of the leading institutions in the country, offering pharmaceutical education at the undergraduate, postgraduate, doctoral and postdoctoral level.

Institute has been ranked 37th in India Ranking 2023 by Ministry of Human Resource Development, (MHRD), Government of India in its National Institutional Ranking Framework (NIRF). The institute received 1st rank by GSIRF 2023 with Five Star Rating.

The B.Pharm. Programme has been re-accredited by National Board of Accreditation (NBA) for three years (2022-23 to 2025-26). The Institute offers B. Pharm, Pharm D, M. Pharm. (Pharmaceutics, Pharmacology, Pharmaceutical Analysis and Regulatory Affairs), Full time and Part time Ph.D. and Post-doctoral Programmes.

The Institute has adopted Outcome Based Education (OBE) to further advance the development of professional knowledge, inculcate employability skills in addition to development of character and social responsibility. To achieve the same objective, vision and mission of the institute was also defined in line with University's vision and mission. The Institute has also framed its programme educational objectives and programme outcomes. The Institute has more than 5.0 crore rupees grant from government agencies and has collaboration with various research centres and industries. The Institute houses state-of-the-art instruments, like supercritical fluid extractor and chromatogram, HPTLC, HPLC, MPLC, GC, Fluorescence Spectrometer, Raman Spectrometer, UV-VIS-NIR Spectrophotometer, FTIR, DSC, ELISA, PCR, Electrophoresis, Texture Analyser, Automated Dissolution Apparatus, Extruder-Spheronizer, Multiple diffusion Assembly, High Pressure Homogenizer, Particle Size Analyser, Microwave synthesizer, Stereotaxic apparatus with Micro-dialysis as well as software's, like Gold Suit, eCTD, Design Expert, etc.

The Institute has a two-storied animal house facility registered with the Committee for the Control and Supervision of Experiments on Animals (CCSEA), Government of India. Besides, there is also a medicinal plant garden "Nirma Herbal Wealth", having an area of 3356.5 sqm with around 150 genera and 500 plants. Institute is equipped with Cell Culture Laboratory and Aseptic Laboratory (Class 1000) facilities for advanced research. It also has machine room with manufacturing and testing equipment's.







## B.PHARM. PROGRAMME

### Programme Educational Objectives (PEOs)

#### Sr. No. Programme Educational Objectives

- PEO1** To acquire effective knowledge of pharmaceutical sciences leading to hold key position in industry as well as health care sector
- PEO2** To attain practical training and technical expertise in pharmaceutical fields
- PEO3** To inculcate professional and ethical standards with effective interpersonal communication skills.
- PEO4** To develop interdisciplinary pharmaceutical approach towards society benefit, problem solving and lifelong learning.
- PEO5** To adapt and implement best practices in the profession by enrichment of knowledge and skills in research and critical thinking.

# PROGRAMME OUTCOMES FOR BPHARM

## No. Program Outcomes

- PO1 Pharmacy Knowledge:** Possess knowledge and comprehension of the core and basic knowledge associated with the profession of pharmacy, including biomedical sciences; pharmaceutical sciences; behavioral, social, and administrative pharmacy sciences; and manufacturing practices.
- PO2 Planning Abilities:** Demonstrate effective planning abilities including time management, resource management, delegation skills and organizational skills. Develop and implement plans and organize work to meet deadlines
- PO3 Problem analysis:** Utilize the principles of scientific enquiry, thinking analytically, clearly and critically, while solving problems and making decisions during daily practice. Find, analyze, evaluate and apply information systematically and shall make defensible decisions.
- PO4 Modern tool usage:** Learn, select, and apply appropriate methods and procedures, resources, and modern pharmacy-related computing tools with an understanding of the limitations
- PO5 Leadership skills:** Understand and consider the human reaction to change, motivation issues, leadership and team-building when planning changes required for fulfillment of practice, professional and societal responsibilities. Assume participatory roles as responsible citizens or leadership roles when appropriate to facilitate improvement in health and well-being.
- PO6 Professional Identity:** Understand, analyze and communicate the value of their professional roles in society (e.g. health care professionals, promoters of health, educators, managers, employers, employees).
- PO7 Pharmaceutical Ethics:** Honor personal values and apply ethical principles in professional and social contexts. Demonstrate behavior that recognizes cultural and personal variability in values, communication and lifestyles. Use ethical frameworks; apply ethical principles while making decisions and take responsibility for the outcomes associated with the decisions.
- PO8 Communication:** Communicate effectively with the pharmacy community and with society at large, such as, being able to comprehend and write effective reports, make effective presentations and documentation, and give and receive clear instructions
- PO9 The Pharmacist and society:** Apply reasoning informed by the contextual knowledge to assess societal, health, safety and legal issues and the consequent responsibilities relevant to the professional pharmacy practice
- PO10 Environment and sustainability:** Understand the impact of the professional pharmacy solutions in societal and environmental contexts, and demonstrate the knowledge of, and need for sustainable development.
- PO11 Life-long learning:** Recognize the need for, and have the preparation and ability to engage in independent and life-long learning in the broadest context of technological change. Self-assess and use feedback effectively from others to identify learning needs and to satisfy these needs on an ongoing basis

# PROGRAMME OUTCOMES FOR MPHARM

The link of MPharm Program outcomes is:

<https://pharmacy.nirmauni.ac.in/academics/programmes/masters-of-pharmacy/>

# ACADEMIC INFRASTRUCTURE

## The Campus

The Institute of Pharmacy is situated on the sprawling 115-acre green campus of Nirma University. It has all the modern facilities like Sophisticated Instruments, State of the art labs, excellent computing & IT infrastructure including latest software, rich library, canteen, playgrounds, indoor games and gymnasium. The campus provides an ambience that motivates the students to grow. Additionally, the campus has sports facilities and the overall ambience is distinguishable by its serenity, which is conducive for intellectual pursuits.

## Nirma Herbal Wealth

Plants have been used for the treatment of various ailments since ancient times. India has earned a lot of fame for its indigenous traditional knowledge of Ayurvedic and herbal drugs. To give emphasis on the importance of herbal drugs, a medicinal plants garden, covering a total area of 3356.5 sq. meters has been developed at the University campus. More than 150 species of various medicinal plants have been planted. The medicinal plants garden provides a strong impetus for herbal drug research and training.

## Library

The library plays a vital role in the collection, development and dissemination of scientific information and includes a wide range of volumes in different branches of Pharmaceutical Sciences and allied subjects and also provides extensive access to leading Indian and international research journals, location and availability information of the books stocked in the library. Online Public Access Catalogue (OPAC) is also available on the Internet to inquire about the status of the resources.

## Class Rooms

The classrooms are spacious, ventilated and equipped with multimedia and audiovisual equipment to facilitate effective learning and promote maximum interaction between the faculty and students.

## IT Infrastructure

The Wi-Fi enabled campus provided 24x7 learning to students on campus. Course websites, LMS-Moodle and learning blogs are unique features for faculty-student interaction. Computer centers are capable to conduct online assessment of many students at a time. An integrated software system records students' attendance, academic performance.

## Student Section

The student section looks after admission, registration, student records, semester end examinations, scholarships, concessions, issue of identity cards, bonafide certificates, provisional passing certificate etc.





# RESEARCH INFRASTRUCTURE

## Centre for Advanced Instrumentation (CAI)

In line with the vision of the University to do overall development of its students, to serve society and to achieve new milestones in various fields of research and development, the University has decided to set up a Centre for Advanced Instrumentation (CAI). This central facility will enhance the research activities and outcomes of university. This sophisticated instrumentation facility has high-end instruments which provides a platform to graduating students to develop their skills in handling latest instruments and is also helpful to masters' students, doctoral research scholars and faculty members who are involved in pursuing research activities. Centre facilitates procurement of high-end instruments as it requires huge investment, maintenance as well as expertise, which is otherwise difficult for individual researchers. Apart from this, the center offers its services to external researchers working in academia, research centers and industries.

### List of Instruments:

1. Gas Chromatography (GC)
2. High Pressure Liquid Chromatography (HPLC)
3. High Performance Thin Layer Chromatography (HPTLC)
4. Supercritical Fluid Chromatography / Extraction
5. Atomic Absorption Spectrophotometer (AAS)
6. Differential Scanning Calorimeter (DSC)
7. Freeze Dryer
8. Fourier Transform Infra-red Spectrometer with Microscope (FT-IR)
9. High Pressure Homogenizer
10. Particle Size Analyzer
11. Spectrofluorometer
12. Total Organic Carbon
13. UV/VIS/NIR Spectrophotometer
14. Florescent Microscope
15. Flow Cytometer
16. Polymerase Chain Reactor (Real Time)



## Machine Room

The machine room is equipped with Rotary Tablet Machine, Fluidized Bed processor, Digital Tensiometer, Texture Analyzer, Liquid extruder, Mini Spray Dryer, Freeze dryer, Automated Dissolution Apparatus, projection microscope, vacuum drier, Ultrasonicator etc. The laboratory provides facilities to carry out extensive research and consultancy for pharmaceutical industries.

## Drug Discovery Lab

It possesses seven workstations (computers) with latest configurations. It also possesses molecular modeling software. The students are trained on the software for docking, MD simulations, pharmacophore modelling and QSAR studies etc.

## Animal House

The Institute has state-of-the-art animal house facility registered by the Committee for Control and Supervision of Experiments on Animals (CCSEA), Government of India. It provides pre-clinical testing in conformity with national and international regulatory guidelines. The animal house facilitates the availability of healthy and homogeneous animals for preclinical research studies. An incinerator is also available at the animal house for ethical disposal of the sacrificed animals.





## Herbal Garden

The university houses a well-developed medicinal plant garden “Nirma Herbal Wealth” covering a total area of 3356.5 sq. meters with more than 150 species and 500 plants, extending the scope to carry out research on medicinal plants. The plants grown here are useful in the practical sessions of Pharmacognosy and Herbal Drug Technology. This well-developed medicinal plant garden provides a strong impetus for herbal drug research and imparts training to the students. It supplies crude raw materials and fresh plant specimens essential to carry out herbal drug and natural product-related research by the graduate, postgraduate and doctoral students.

## Cell Culture Lab

The Cell Culture Lab is equipped with state of art facilities and is constructed as per the Good Laboratory Practices (GLP) and Biosafety Level-2 guidelines to meet the critical requirement for the research in pharmaceutical sciences for the studies of disease pathways and effects of a drug or chemical. The lab provides all the basic and advanced equipments required for the culturing of mammalian cells and enables students to work with primary and secondary cell lines.



# AMENITIES

## Canteen, Food Courts and Food Park

A modern canteen and food court building areas provide hygienic and wholesome food, snacks and beverages. The facility of the VIP dining area is also available.

## Sport Playgrounds

Nimra University provides its students with modern sports facilities to encourage their participation in various sports. The university has a cricket ground with three hard bowling pitches, spread across an area of 20,120 square meters, and a separate net practice space for regular practice sessions. The football ground measures 90 by 45 square meters, while there are two volleyball grounds for students to practice and participate in regional and national level competitions. The university also has three lawn tennis courts and adjacent to the cricket ground, there are two badminton courts measuring 13.40 meters by 6.10 meters each. Additionally, the university has a running track of 400 meters and 100 meters. The Students Activity Centre (SAC) provides ample space for indoor sports and games such as carom, chess, and table tennis.

## Health Centre and Ambulance Service

The University has its own Health Centre and a Nonresident Doctor for primary treatment to the students. Ambulance service is available at 24X7 on the campus for emergency cases.

## Yoga Hall

The University has a well-designed Yoga Hall on the campus for conducting yoga classes. Regular yoga classes are part of the academic curriculum.





## Students' Store

A students' store is run on a "no profit no loss" basis and provides all the necessary materials like books, stationary, practical requirements, etc. to students.

## Bank

For the benefit of the student, faculty and staff members, a branch of the Kalupur Commercial Cooperative Bank Limited with 2 ATM Facilities is available in the University campus.

## Hostel Accommodation

Hostel accommodation (separate for boys and girls) is available on campus for Undergraduate (only girls) Postgraduate and PhD students (boys and girls). Various types of hostel rooms (AC, non-AC, sharing basis, etc.) are spacious and well furnished with internet facilities. The hostel mess serves only vegetarian food.

## Transport Facility

Transport facility is provided to the students from their residence to the institute and back. For this the university has its own fleet of buses, which ply on pre-decided routes.

## Safety & Security

To ensure proper safety & security in the campus, a team of trained guards and supervisors remains available round the clock within its premises. The university is under 24x7 surveillance with the help of hi-tech CCTV Cameras.

## Guest House

University Guest House provides the accommodation, for teaching and administrative fraternity, who are visiting the university on officially or on personal bases. Rooms are facilitated with amenities like air condition and geyser.

## Other Facilities

In order to provide round the clock electricity, three generators set of 625kVA, 500kVA each and one generator of 250kVA, remain operational in the campus. Cleanliness in the campus is given importance & maintenance activities are continuously monitored by the estate department. Campus is also having sewage treatment plant and also uses its canteen waste to generate compost for gardening purposes.



# Department Profiles

The image features a hand in a yellow nitrile glove pouring a clear liquid from a test tube into a conical flask. The background is a blurred laboratory setting with various glassware like beakers and flasks. A white arrow points from the title 'Department Profiles' to the right. A green curved graphic element is in the bottom right corner.

# DEPARTMENT OF PHARMACEUTICS

Pharmaceutics, a multidisciplinary science is associated with the development, production, and characterization of dosage forms/drug delivery as well as the disposition and action of drugs in the body. Department of Pharmaceutics offers courses at undergraduate, postgraduate and doctoral levels. Students are trained towards the basic concepts to the latest developments in pharmaceutics and pharmaceutical technology as per the need of society. The department works towards promoting a strong multidisciplinary, team-based approach to drug delivery, embracing a variety of activities in the

broadarea of drug formulation and delivery. The faculty members and students at the department contribute to research through funded projects, industrial projects, consultancy, etc. to formulate novel formulations.

## Thrust Area

- Dosage form development
- Targeted Drug delivery system
- Micro/ Nano-based and vesicular drug delivery systems using QbD-DoE Approach
- Pharmacokinetic study for poorly soluble drugs.



# DEPARTMENT OF PHARMACEUTICAL CHEMISTRY

The Department of Pharmaceutical Chemistry is an integral part of pharmacy education involving several aspects of new drug discovery and development in collaboration with other disciplines of pharmacy. As a part of undergraduate teaching and learning, various subjects included are Pharmaceutical Inorganic Chemistry, Biochemistry, Pharmaceutical Organic Chemistry, Medicinal Chemistry, and Computer Aided Drug Design. Extensive use of modern audio-visual teaching aids and molecular models make the lessons interesting and student-centric. The students are also encouraged for various other activities like personality, communication and soft skills development; scientific writing; workshops for improvement in presentation and documentation skills, etc.

The department has collaborations with various research organizations, industries and basic science departments where students can participate in interdisciplinary research projects relevant to core areas. Full time PhD students of the department received various fellowships from CSIR, ICMR, DST-SERB, DST-INSPIRE, GSBTM and Nirma University. The

research projects help students to get deep insights in the research areas and help to develop expertise. Alumni members of the department are placed at various places like R&D, CRO and academic institutions, etc. Many past students are also pursuing their post-doctoral studies in reputed universities across the globe

## Thrust Areas

- Discovery and optimization of bioactive molecules for a wide range of potential therapeutics.
- Computational methods for virtual screening and rational drug design.
- Synthesis of smaller hetero and non-hetero novel chemical entity (NCEs)
- Early-stage drug discovery in a wide range of disease areas including cancer, diabetes, inflammation, HIV, TB, bacterial & fungal infections, etc.
- Biological evaluation of potent NCEs





## DEPARTMENT OF PHARMACEUTICAL ANALYSIS

Department of Pharmaceutical Analysis deals with the analysis of the raw materials as well as finished pharmaceutical formulations which are very important for the evaluation of quality, safety, and efficacy of pharmaceutical products.

At the undergraduate level, the department is involved in imparting theoretical as well as practical knowledge of the subject that a student needs to acquire the current scenario of quality control and quality assurance of pharmaceutical substances as per the need of the Pharmaceutical Industry and regulatory requirement. The subject includes an introduction to pharmacopoeias (IP, BP, USP, and others) and different analytical methodology used in pharmacopoeias for the analysis of drug substances and Drug Products.

The department provides an exhaustive postgraduate programme focused on research and coursework relating to most recent advances in pharmaceutical and biomedical analysis, quality assurance as well as regulatory affairs. The students are motivated for

overall development, including personality development, scientific writing, data interpretation, presentation, documentation, good laboratory practices, communication, and soft skills.

Full time PhD students of the department got research fellowship from CSIR, ICMR, DST, DST-INSPIRE and Nirma University. Faculty members of the department are actively involved in interdisciplinary research work and collaborated with scientists of various reputed research organisation, academic institute, and industry.

### Thrust Area

- Analytical Method Development and drug stability evaluation
- Herbal and Food Analysis
- Space Medicine Stability
- Pharmaceutical Regulatory Affairs

# DEPARTMENT OF PHARMACOLOGY

Pharmacology is a unique and dynamic branch of pharmacy, since it involves the understanding of how a drug deals with the human body and how the human body responds to the drug. The department offers undergraduate courses like Anatomy and Physiology, Pharmacology, Pathophysiology and Clinical Pharmacy and Pharmacotherapeutics. The post-graduate programme in Pharmacology focuses on research-oriented courses like Cellular and Molecular Pharmacology, Clinical Research and Pharmacovigilance, etc. Under the aegis of the PharmD programme, the department offers various courses like Community Pharmacy, Pharmacy Practice, Pharmacoeconomics and Pharmacoepidemiology. The institute also has collaborations with K D Hospital, SGVP hospital, Epic Hospital and several other hospitals for training and research for PharmD students. The department has collaborations with national and international research institutes, industries and other basic science departments where students can participate in interdisciplinary research projects that are relevant to pharmacology. The research projects facilitate a critical examination of pharmacological approaches and analyses/techniques used in research and produce a comprehensive dissertation and present their findings. The students are motivated for overall development, including-personality development, scientific writing, data interpretation, presentation, documentation, good laboratory practices, good clinical practices and its related guidelines in compliance with various regulatory authorities, communication, and soft skills.

Alumni members of the department are placed in research and development, medical writing, CROs and reputed academic institutions. The department has received several consultancy projects from various government agencies and national and international pharmaceutical industries. The doctoral students are awarded scholarships from DST, ICMR and pharmaceutical industries for their projects. Research scholarships for PhD programmes are also awarded on a competitive basis and are supported by University schemes.

## Thrust Area:

- Identification of novel therapeutic and molecular targets.
- Development of novel experimental and surgical models.
- Bioinformatics and Safety Pharmacology.
- Pharmacokinetic and Toxicokinetic studies using good laboratory practices (GLP) protocols.
- Drug discovery, Formulation development and their biological evaluation.
- Clinical Research in compliance with Good Laboratory Practices (GLP) protocols and Good Clinical Practice (GCP)
- Epidemiological studies and Pharmacotherapeutics





## DEPARTMENT OF PHARMACOGNOSY

The Department of Pharmacognosy is engaged in imparting basic and advanced aspects of different natural sources as pharmaceutical raw materials, traditional medicines, phytochemical screening, and scope of Indian medicinal plants in the allied sciences like food, nutraceuticals, and cosmetics. The department deals with theoretical as well as practical knowledge of undergraduate courses related to pharmacognosy, phytochemistry, analytical pharmacognosy, the chemistry of natural products, herbal drug technology, and nutraceuticals. The department is offering consultancy services to the herbal drug industries, various research institutes, and cosmetic companies and successfully completed many consultancy projects. Several students have completed their PhD under the guidance of the able faculties in the department with research fellowships under the

Government scheme of DBT, INSPIRE-DST and Women Scientist WOS-A.

### Thrust Area

- Phytopharmacological Evaluation of Herbal drugs and bioactives for neuroprotection, wound healing, diabetes, cancer etc.
- Formulation development and evaluation of Nutraceuticals, Herbal Formulations, Herbal Cosmetics
- Extraction, Isolation, separation of phytoconstituents and Analytical Method Development
- Quality control & standardization of drugs of natural origin
- Isolation of new molecules from plant origins.

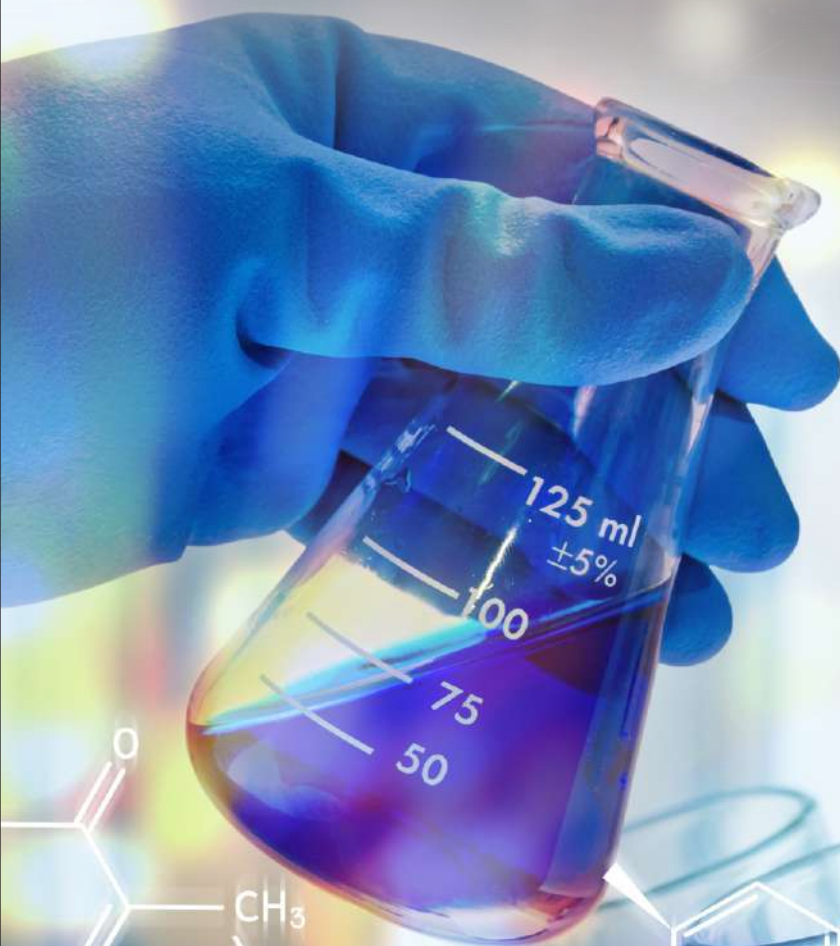
# ACADEMIC PROGRAMMES

The Institute currently offers following programmes:

1. **B.Pharm.** (Eight Semester Programme) - 100 seats (85 State Quota ACPC seats +15 NRI seats)
2. **Pharm D.** (Six-year Program) - 30 seats + 10 seats of Post-baccalaureate
3. **M.Pharm.** (Four Semester Programme)
  - a. Pharmaceutics – 15 seats
  - b. Pharmaceutical Analysis – 15 seats
  - c. Regulatory Affairs – 12 seats
  - d. Pharmacology – 12 seats
4. **Ph.D.** (Full Time and Part Time) Programme and Post doctoral Programme in Pharmaceutical Sciences

For further detail please visit: <https://pharmacy.nirmauni.ac.in/admission-aid/>

For admission related inquiry please visit: <https://pharmacy.nirmauni.ac.in/enquiry/>





# SALIENT FEATURES

- **State-of-the-Art Infrastructure:** Well-equipped labs, advanced research centers, and specialized classrooms.
- **Expert Faculty:** Faculty members are highly qualified with awards, patents, and publications.
- **Cutting-edge Research Opportunities:** Interdisciplinary projects, industry collaborations, and publications in reputed journals.
- **Industry Programs:** Workshops, seminars, and networking for practical exposure and career development for students.
- **Placement and Internship Support:** Dedicated placement and internship support, with strong ties to pharmaceutical companies, facilitating career opportunities for students.
- **Entrepreneurship Support:** Students are encouraged to explore entrepreneurship through incubation support, startup initiatives, fostering a culture of innovation and enterprise.
- **Global Collaborations:** Partnerships with renowned international universities and research institutions, offering students opportunities for global exposure, exchange programs, and collaborative research endeavors.
- **Institute Advisory Committee:** Comprising eminent personalities from academia and industry, to monitor and guide teaching-learning practices, research initiatives, consultancy projects, and other activities.
- **Interactive Learning:** Utilizing modern tools, web resources, and Wi-Fi for engagement fostering active engagement and knowledge retention among students.
- **Mentoring and Guidance:** Constant mentoring to students on a one-to-one basis, focusing on Career guidance, personal development, and motivation.
- **Communication and Exam Coaching:** Skills training and competitive exam preparation like GPAT, TOEFL, GRE, etc., enhancing their overall employability and academic achievements.
- **Library Services:** The Institute boasts an excellent, fully automated library with over 9990 volumes of books, 98 e-journals, 23 print periodicals, and other reference materials. Remote log-in facilities enable access to databases.
- **Industry Exposure:** Students benefit from summer training, visits to industries, and real-world insights.
- **Campus Facilities:** The Institute offers transportation, modern canteen, medical services, and banking and an in-house doctor with ambulance services and in-house banking facility.
- **Support for Needy Students:** Book bank facility for equitable access.
- **Anti-Ragging Policy:** Ensures a safe learning environment.
- **Recreational Facilities:** Playground, indoor games, and gym for physical activities.



# B.PHARM ADMISSION

Bachelor of Pharmacy (BPharm) is four years (eight semesters) under-graduate program approved by Pharmacy Council of India (PCI) for 100 Seats intake. Institute follows norms of Admission Committee for Professional Courses (ACPC), Gujarat State for admission process. As per government norms, additional Seats are being filled as Supernumerary Seats by ACPC for Economically Weaker Sections (EWS) and Tuition Fee Waiver Scheme (TFWS).

## Admission by ACPC, Gujarat State

- 85 Seats (+ 5 EWS + 5 TFWS) are being admitted by ACPC, Gujarat state. Candidate needs to apply to ACPC, Gujarat State (<https://acpc.gujarat.gov.in/degree-diploma-pharmacy>) for centralized admission process.
- Eligible candidates would be allotted admission as per merit prepared considering results of qualifying exam (12th Science Board exam) and GUJCET of current year.
- If the seats remained vacant after completion of admission process by ACPC (i.e. after final round of allotment), then admission on vacant seats would be processed directly by Institute as per norms and instructions by ACPC.

## Management Seat (NRI Category)

- 15 Seats are admitted by Institute as NRI category (NRI self / NRI ward / NRI sponsored) as per norms of ACPC.
- Interested candidate fulfilling eligibility criteria may apply to Institute within a stipulated time period as per ACPC norms by payment of application process fees.
- The additional documents required to be submitted includes the copy of passport (and visa) as a proof for NRI, and the notarized affidavit undertaking from sponsor as per standard format.
- Eligible candidates would be admitted as per inter-se merit list of applications received for NRI category admission.

## NRI self / NRI ward

- The merit list will be prepared considering percentage obtained in theory subjects of Physics, Chemistry, Mathematics and/or Biology subject of Std. 12<sup>th</sup> Science or equivalent examination.

## NRI-Sponsored

The merit list will be prepared considering the following weightage:

- 50% weightage of NEET/JEE (Main)/GUJCET examination
- 50% weightage of last qualifying (12<sup>th</sup> standard) examination (Physics, Chemistry, Biology / Mathematics Theory percentile)

Refer Institute website for more details about eligibility, admission process, fee structure, etc.

# PHARM D ADMISSION

- PharmD (Doctor of Pharmacy) is a six-year programme approved by the Pharmacy Council of India (PCI). Total intake is 30 seats. Admission is done by Institute of Pharmacy, Nirma University.
- Bifurcation of Seats is,
  - 85% seats for 10+2 passed students of India with Physics and Chemistry as compulsory courses along with Mathematics or Biology or Both
  - 15% seats for NRI students
- Minimum qualification for admission to PharmD Course under Nirma University is:  
Pass in any of the following examinations –
  - (1) 10+2 examination with Physics and Chemistry as compulsory subjects along with one of the subjects, Mathematics or Biology or Both
  - (2) D.Pharm. course from an institution approved by the Pharmacy Council of India under section 12 of the Pharmacy Act.
  - (3) Any other qualification approved by the Pharmacy Council of India as equivalent to any of the above examinations.
- Provided that a student should complete the age of 17 years on or before 31<sup>st</sup> December of the year of admission to the course.
- Refer Institute website for more details about eligibility, admission process, fee structure, etc.



# M.PHARM ADMISSION

- Master of Pharmacy (MPharm) is a two year (four semesters) post-graduation program approved by Pharmacy Council of India (PCI) offered in following specializations:
  - Pharmaceutics 15 Seats
  - Pharmacology 12 Seats
  - Pharmaceutical Analysis 15 Seats
  - Regulatory Affairs 12 Seats
- One seat is reserved in each branch for students who have passed their BPharm from Nirma University.
- The candidates must have passed the qualifying examination (BPharm) from a recognized university with minimum aggregate marks or equivalent Cumulative Grade Point Index (CGPI) or any other qualifying degree examination (as per AICTE & PCI norms) considered as equivalent of BPharm degree by Nirma University, Ahmedabad. Candidates who are appearing for the final semester of qualifying examination (BPharm) can also apply.

## Admission Process

- Interested candidates may apply online from the institute website.
- The eligible applicants with valid GPAT score will be given preference for admission in all the branches, and the admission will be given based on the merit of All India Rank (AIR).
- Seats remained vacant after considering the GPAT qualified candidates, would be offered to Non-GPAT candidates as per merit of the National Level Online Entrance Exam conducted on the day of counseling at Nirma University campus.
- Exam consists of multiple-choice questions and it would be in-line with the GPAT exam.
- Financial assistance (i.e. stipend) would be given to all admitted candidates.

Refer Institute website for more details about eligibility, admission process, fee structure, etc.

# INTERNATIONAL STUDENTS ADMISSION

15% of total seats in each program being conducted at the constituent institutes of Nirma University, is available for admission to International Students under the Supernumerary categories like Children of Indian Workers in Gulf Countries and South East Asia (CIWGC-SEA), Overseas Citizen of India (OCI) and Foreign Nationals (FN); out of which one-third i.e 5% seats are earmarked for CIWGC-SEA and 10% for OCI/FN. If the OCI/FN is not filled, the quota is available to CIWGC-SEA.

## Categories for International Students

### A) Children of Indian Workers in Gulf Countries and South East Asia (CIWGC-SEA)

The candidates whose parents are working in Gulf countries or South East Asia are eligible under this category.

### B) Overseas Citizen of India (OCI)

The persons who are citizens of other countries (except Pakistan and Bangladesh) who at any time held an Indian Passport, or who or either of his parents or any of his grandparents was a citizen of India by virtue of the provisions of the Constitution of India or Sec 2 (b) of Citizenship Act, 1955 (Act No. 57 of 1955) are eligible under this category. Overseas Citizens of India (OCI) are considered under this category. Earlier OCIs were called PIOs.

### C) Foreign Nationals (FN)

The citizens of all countries other than India, who are not of Indian origin as defined under PIO are eligible under this category. This category includes SAARC countries also.

Refer following for more details about application, admission process, fee structure, etc.

<https://internationalrelations.nirmauni.ac.in/admissions/>

Contact for more details:

Office of International Relations, Nirma University

Email: [ir.nu@nirmauni.ac.in](mailto:ir.nu@nirmauni.ac.in), [mehul.naik@nirmauni.ac.in](mailto:mehul.naik@nirmauni.ac.in)

Phone: (079)71652499



# PhD & POST-DOCTORAL ADMISSION

Nirma University offers Full Time and Part-time Doctoral (PhD) Program and Post-Doctoral Fellowship (PDF) program in the specialization of Pharmaceutical Sciences. Faculty of Doctoral Studies and Research (FDSR) governs the admission as per norms of UGC and Nirma University.

- A master's degree or equivalent in a relevant discipline from a recognised university with at least 55% marks in aggregate or equivalent grade.  
**OR** A 4-year bachelor's degree programme or equivalent in relevant discipline from a recognised university with at least 75% marks in aggregate or its equivalent grade
- An entrance test is conducted for the eligible candidates, followed by an interview by a Departmental Research Committee to select the candidate.
- Entrance test consists of 50% from research methodology and 50% from the core subject; and candidates scoring more than 50% in the entrance test would be allowed for the next step of interview/viva-voce.
- The candidates who qualify the UGC-NET (Including JRF) UGC-CSIR NET (Including JRF) SLET / GPAT with a valid score in terms of cut-off marks and duration, teacher fellowship holder or who have passed MPhil programme shall be exempted from appearing in the entrance test and deemed to be qualified for personal interview.
- During interview / viva-voce, candidates are selected based on competence for the proposed research, the research work suitability at the Institute, and innovative contribution by research area.
- On the recommendation of the Departmental Research Committee and on the approval of the Dean, Faculty of Doctoral Studies & Research; the selected candidates would be offered admission and the Research Supervisor shall be allocated by the Department Research Committee.
- As per norms of Nirma University, the meritorious PhD candidates are eligible for financial assistance (i.e. Scholarship) as Rs. 26,290/- Per Month for First Two Years and Rs.30,030/- Per Month for Third Year.
- A Postdoctoral Fellow is entitled for the monthly fellowship at par with the salary of an Assistant Professor of Nirma University at the time of appointment.

Refer following for more details about application, admission process, fee structure, etc.

<https://fdsr.nirmauni.ac.in/>

Contact for more details:

PhD Section, Nirma University

Email : [phd.section@nirmauni.ac.in](mailto:phd.section@nirmauni.ac.in)

# ACADEMIC EXCELLENCE

The institute makes use of an appropriate mix of pedagogical tools to train students to handle professional responsibilities. These include lectures by an appropriate mix of in-house and visiting faculty, expert lectures, discussions, seminars, project assignments, and visits to industries. The laboratory practical related to the theory course are included in the syllabus to acquaint the students with practical knowledge. Continuous Evaluation and counselling are important parts of the academic programme.

The quality education is imparted by following approaches.

- Rigorous Coaching with Continuous Evaluation
- Learning through Classroom Teaching, Practical Work, Industry Visits and Project Work
- Use of Innovative Pedagogical Tools for Teaching and Assessment
- Faculty Guidance and Advisory System with Faculty as Counsellors to students
- Continuous Enhancement of Communication Skills
- Portion of curriculum is covered by Industrial Expert and Alumni Member in each course
- Idea lab for carrying research on new idea by the students

## Internal Quality Assurance Cell (IQAC)

The establishment of the Internal Quality Assurance Cell (IQAC) as per guidelines of NAAC, is a major step in maintaining long term quality standards of the Institute. The cell works under the aegis of Internal Quality Assurance Cell- University Level (IQAC-U) established at University level. It acts as a nodal agency of the Institution for coordinating quality-enhancement activities, including adoption and dissemination of best practices and apply standards and benchmarks for various academic and administrative activities of the institution. The role of IQAC is internalization and institutionalization of quality enhancement initiatives in teaching, research and academic administration. Regular meetings are done to discuss the quality related parameters which helps in teaching as well as research excellence.



# STUDENT SUPPORT

## Mentoring

Upon commencement of the program, faculty members are allocated a predetermined number of students. They engage in regular meetings with their assigned students to assess academic progress, ensure alignment with program objectives, and provide guidance for addressing any academic deficiencies. These sessions also offer opportunities to address personal challenges and facilitate integration within the academic community, fostering effective collaboration among peers and faculty members.

## Ragging – Zero Tolerance

Ragging is strictly prohibited inside and outside the University campus. The Anti Ragging Committee, constituted for this purpose by the Institute, is empowered to take immediate punitive action against any untoward action, like suspension of attending classes & academic privileges, expulsion from hostel, Rustication from the institution or cancellation of admission as per the severity of event. Students seeking admission shall have to furnish an undertaking in this regard to ensure about not to involve in any such activities. The national anti-ragging helpline no. is 1800-180-5522 [24\*7 toll free].

## Women Development Cell

In pursuance of the directives issued by the UGC and MHRD, the Nirma University has set up the Women Development Cell (WDC) and prescribed norms to sensitize the community with regard to gender related issues and create a gender friendly environment. The objectives of Women Development Cell are to provide and maintain a dignified, congenial working environment for women employees (including teaching, non-teaching and contractual workers) and students, where they can work, study and explore their potential to the fullest and a committee of some specified members has been constituted as “Women Development Cell”.

## Equal Opportunity Cell

Indian society has a rich diversity in terms of religion, caste and culture that is characterised by different social practices and this may sometimes lead to inequalities and create barriers to access the important resources for disadvantaged sections of the society. These sections especially include the scheduled caste, scheduled tribes, other backward classes, women, minorities and differently-abled.

To cater to these groups, an Equal Opportunity Cell (EOC) is set up under the aegis of Nirma University to make the education system inclusive and responsive to their needs.







The main objective of the Cell is to identify the issues amongst the disadvantaged sections on the campus and provide an enabling and non-discriminative environment and ensure equality and equal opportunities for them through proper implementation of inclusive policies and programmes.

## **Prevention of Sexual Harassment**

The university in pursuance of the regulations published by UGC “University Grants Commission (Prevention, prohibition and redressal of sexual harassment of women employees and students in higher educational institutions) Regulations, 2015” has constituted the Internal Complaints Committee (ICC) at Nirma University for prevention, prohibition and redressal of sexual harassment of women employees and students at the university. The objectives of this committee are to prevent discrimination and sexual harassment against women, by promoting gender amity among students and employees; to lay down procedures for the prohibition, resolution, settlement and prosecution of acts of discrimination and sexual harassment against women, by the students and the employees; deal with cases of discrimination and sexual harassment against women, in a time bound manner, aiming at ensuring support services to the victimized and termination of the harassment and recommend appropriate punitive action against the guilty party to the Chair/Director General of Nirma University.

## **Anti-drug Squad**

Institute of Pharmacy, Nirma University has constituted Anti-drug squad with an objective of creating awareness for prevention and dangerous effects of the abusive drugs.

## **Counselling Centre**

With a focus on addressing the holistic needs of its student body, the University has established a dedicated Counselling Centre on its campus. Here, a qualified counsellor systematically assesses and addresses student concerns, guiding them towards viable solutions. Through individual sessions, students are empowered to approach their challenges constructively, with support in clarifying issues, exploring alternatives, and enhancing self-awareness.

Additionally, the Counselling Centre conducts group sessions on pertinent topics such as stress management and substance abuse prevention, fostering awareness and equipping students with essential life skills. Situated at the ground floor of the Institute of Management building, adjacent to the Management Library, the Counselling Centre offers accessible support within the university community.

# STUDENT PROGRESSION

## Orientation Program

The Institute organizes a unique orientation programme of about one week for all new entrants in order to enhance familiarity, and to acclimatize the freshers to the academic and social environment of the campus. Various lectures on Time Management, Stress Management, Human Relations, Positive Attitude, Communication Skills, etc. are delivered by eminent speakers to the students. This programme enables the students and faculty to interact and understand each other. It also provides smooth transition from school life to a new environment of professional studies.

## Under Graduate Research Council

In line with the University Research Policy, Institute of Pharmacy also envisages basic, applied and societal relevant research apart from conducive learning. Institute of Pharmacy, Nirma University has established the Under Graduate Research Council to encourage interest of UG students in research related activities. These activities include guidance for innovative ideas, engaging students into practical and real life problem solving and nurture their creativity. This initiative is to engrave curiosity and support the students in research by providing the egis of mentors and pursue multi-disciplinary research in Pharmaceutical Sciences.

## Programme Committee

The Institute has a Programme Committee for B. Pharm and M. Pharm Programme constituted by the Head of the institution as per PCI norms. The committee members periodically review the progress of the classes and discuss the problems concerning curriculum, syllabus and the conduct of classes. The committee members also discuss with the course teachers on the nature and scope of assessment for the course and the same shall be announced to the students at the beginning of respective semesters. The committee communicates its recommendation to the Head of the institution on academic matters.

## Co-curricular Activities

The Institute gives due importance to projects, industrial visits and training during academic breaks to support curricular work of the students. The students are motivated to present seminars on latest developments in the field of pharmaceutical sciences, which helps to enhance their library reading, scientific writing and presentation skills. The Students have participated at various National and State Level competitions and have also won awards. The Institute also regularly organizes a National level Quiz "NIRMAQUEST". Extensive participation is received from institutions of the state as such a competition provides the students a platform to bring out their communication skills and general, factual and scientific knowledge. The Various carrier guidance seminars been regularly been organized



for the students through the series of seminars. The students were encouraged to participate in the various co-curricular activities outside the campus also. Various industry visits used to be planned for the students for exploring them in the industry world.

## Extra-Curricular Activities

The Institute organizes every year cultural festival “ROSTRUM”, which are competitions of various events like drama, skits, dances, songs & pinnacle, where the students demonstrate their skills and the budding artists show their talents. “Euphoria” is a dedicated program conducted for first year students to provide a platform to new students for participation in various extra-curricular activities. Sports events are also regularly organized every year. Celebrations of Independence Day and Republic Day are also organized. Pharmacist day celebration, Foundation Day & Teachers Day celebration are other events which are routinely planned at the institute level. Inter-institute competitions are also being organized and students of Institute of Pharmacy participate in Nuzeal and one act play competition at University level. Students are also participating in various competitions outside Nirma University such as the west zone level youth festival organized by AIU in drama, music, art and craft and literary events.

## Students' Association & Clubs

Nirma Institute of Pharmacy Students' Association (NIPSA) empower students to organize co-curricular & extra-curricular programmes, guest lectures, and talent events independently which develops team work, managerial and leadership skills in the students.. Various Clubs like Entrepreneurship Club, Arts & Craft Club, Design Club, Literature Club, Drama Club, Photography Club, etc. provide overall development of the students of the Institute.

## Alumni Interactions

Institute of Pharmacy Nirma University Alumni Association (IPNUAA) fosters robust networking with alumni through a diverse array of initiatives. These include engaging alumni as guest speakers, visiting faculty, members of the Institutional Quality Assurance Cell (IQAC-I), and members in the Board of Studies. Moreover, alumni are invited to share their expertise and insights with current students through technical talks and career guidance sessions, enhancing the students' access to valuable knowledge and professional connections. Our alumni members residing abroad actively contribute by conducting online webinars. Additionally, IPNUAA hosts regular events such as the annual alumni meet and sector-specific networking gatherings. These occasions provide an invaluable platform for final year students to interact with alumni, facilitating meaningful connections and enhancing career prospects.

## Idea Lab

Institute of Pharmacy, Nirma University conducts “IdeaLab” for promoting creative activity at the Institute by funding the testing and implementation of novel ideas of the students. Early hands-on experience provides opportunities for enthusiastic and passionate freshmen to join the group. In this endeavor, the students are also being guided and mentored by the faculty.

This type of activity mainly encourages young minds to think about real-time problems and their solutions through innovative projects. Funding is given to the projects that are technically and exploratory with a potential impact on pharmaceutical science, technology, industry, environment and society. IdeaLab welcomes multi-disciplinary, ideas involving students from multiple departments of different institutes. This kind of activity is required to develop overall expertise in terms of various skills like technical skills, conceptual skills, planning, decision making, troubleshooting, etc.





# PLACEMENT CELL OVERVIEW

The Placement Cell at Nirma University is dedicated to fostering strong, mutually beneficial relationships between industry and academia. By maintaining close ties with pharmaceutical industries, contract research organizations, and state and national R&D organizations, the Placement Cell aims to bridge the gap between industry needs and the academic output of the institute. This engagement not only enhances student placements and training but also contributes to curriculum improvement.

## STRUCTURE AND SUPPORT

Each Institute within Nirma University has its own Placement Cell, managed by a dedicated Corporate Relations Manager. This team is supported by faculty placement coordinators and student coordinators, working under the guidance of the Director and in collaboration with departmental heads. The Placement Cell facilitates various activities, including student visits to industries, industrial training, project placements, and campus interviews.

## STUDENT DEVELOPMENT

The Placement Cell is dedicated to ensuring a seamless transition from academia to industry for students. To achieve this, we offer comprehensive training and grooming, which includes orientation and sessions on placement-related topics such as resume writing, group discussions, interview techniques, and interview etiquette.

### Comprehensive Training Programs

- Resume Writing: Tailored workshops to help students create impactful and professional resumes.
- Group Discussions: Strategies and practice sessions to excel in group discussions.
- Interview Techniques: In-depth training on various interview formats and effective response strategies.
- Interview Etiquette: Guidance on professional conduct and presentation during interviews.

## INDUSTRIAL TRAINING AND PROJECTS

- The Placement Cell plays a pivotal role in securing industry training and project opportunities for students during the summer vacation. These experiences are crucial for their professional development and growth.
- Industrial training is an integral component of the curriculum, designed to prepare students for real-world challenges. Depending on the program requirements, undergraduate and postgraduate students are placed in various industries for periods ranging from 4 to 24 weeks. During this time, they work under the supervision and guidance of industry professionals, with regular monitoring and evaluation conducted by the placement team.
- By integrating these elements, we ensure that our students are well-equipped with the skills and experience needed to thrive in their professional careers.



# INDUSTRY INSTITUTE INTERACTION CELL

## TOP RECRUITERS

Nirma University's Placement Cell attracts top recruiters from various sectors. Some of the prominent companies that regularly visit include:

### ● **Pharmaceuticals:**

Alembic Pharmaceuticals Ltd, Amneal Pharmaceuticals Ltd, Dr. Reddy's, Emcure Pharmaceuticals Ltd, Finecure Pharmaceuticals Ltd, Intas Pharmaceuticals Ltd, Sun Pharmaceuticals, Torrent Research Center, Troikaa Pharmaceuticals Ltd, Zydus Lifescience Ltd, GSK Pharmaceuticals Ltd, Lupin Research Centre, Macleods Pharmaceuticals Ltd, Piramal Healthcare, HOF Pharmaceuticals Ltd.

### ● **Life Sciences and Research:**

APCER Life Sciences, Aragen Life Sciences, Cliniserve, Lambda Therapeutic Research, Meteoric Biopharmaceuticals, Syngene International Ltd.

### ● **Other Industries:**

Genpact, Indegene, Marico India Pvt Ltd, Molkem, Nestle India, Radiant Minds, SHAIIP, Sushen Medicamentos Pvt Ltd





## COLLABORATION

The University, recognizing research as the main drive of success in an academic setting, has established a distinct Faculty of Doctoral Studies and Research to initiate research programmes independently or in collaboration with National Laboratories that have the potential in terms of infrastructure and expertise.

The collaborations with research laboratories include Physical Research Laboratory (PRL), Space Application Centre (ISRO), CII (Confederation of Indian Industry), Directorate of Forensic Science, B. V. Patel Pharmaceutical Education and Research Centre. The national collaborations with industries are Piramal Drug Development Services Ltd., Cadila Pharmaceutical Research Centre, Intas Pharmaceuticals Ltd., Apollo Hospitals International Ltd., Amanta Healthcare Ltd, Sushen Medicamentos Pvt. Ltd., West Coast Pharmaceutical Works Ltd, Novo Bliss Research Private Limited, Finecure Pharmaceuticals Ltd. and Evonik. Our international collaborators are Changwon National University, South Korea, Plovdiv University, Bulgaria, Massachusetts College of Pharmacy and Health Science - MCPHS University, Boston, USA University of Southern California, USA, Binghamton University, New York, USA, Universiti Teknologi MARA, Malaysia, University of Turin, Torino, Italy and Tirupati USA, LP.

Institute of Pharmacy, Nirma University has MOUs with the following renowned national and international universities and research centres: Massachusetts College of Pharmacy and Health Science (MCPHS) University, Boston, USA, Plodiv University, Bulgaria, Changwon National University, South Korea, University of Southern California, USA, Turin University, Italy, The Indian Institute of Chemical Technology (IICT), Hyderabad, Telangana, Centre of Excellence in Nanotechnology, CII (Confederation of Indian Industry), GUJCOST, Indian Institute of Technology, Gandhinagar, GCS Medical College, Hospital and Research Centre.

### International Relations Office

International Relations Office supports two functional areas:

#### 1. International Collaborations

With advancement in communication technologies, affordable travel and changing mindset of people around the world, the globalization has been increasing at all levels in last decade. The universities can also leverage on this and work for the mutual benefits through strategic partnerships. In addition, the collaboration with multi-national companies also helps practical research, employments and social engagement. The International Relations Office at Nirma University focuses on planning and executing the global collaborations for the enhancement of the quality of education adopting the dynamics of 21st century education to our students.

#### 2. International Students Affairs

The International Relations Office is also dedicated to help international students, faculty, and scholars in achieving their academic, personal, and professional goals through advising, facilitating visa processes, promoting cross-cultural opportunities, and offering specific services exclusively designed keeping in mind the international aspects.

# PROFESSIONAL OUTREACH ACTIVITIES

## Conferences

Institute of Pharmacy, Nirma University organizes national and international conferences to provide the platform to share the knowledge. The international conference, "Nirma Institute of Pharmacy International Conference" (NIPiCON), "Nirma E-Conference for International Connect (NCIC)" and National Conference "National Conference of Institute of Pharmacy" (NCIP) are organized every alternate year. These conferences aims to cater a knowledge sharing experience in various areas of pharmaceutical sciences with emerging trends and innovative approaches. Eminent Scientists from abroad and India shared their research for the benefit of participants across various pharma colleges and industries.

## Seminars and Workshops

The short and long duration programmes like workshops, lectures, seminars, competency-based skilled development programmes, vocational training, etc. are organized under the banner of Centre for Continuing Education (CCE), with an objective to provide continuing education and training to students, research scholars, academicians, and professionals. Various events like hands-on-training on sophisticated Instruments, equipment, machines, softwares, drug evaluation techniques, etc. used in pharmaceutical research are being organized at regular intervals.

## Short term training programmes (STTP) and faculty development programs (FDP)

One week or two weeks short term training programs (STTP) and faculty development programs (FDP) are regularly organized for regular faculty members for the training and development of in-house faculty members as well as other academicians. Events are organized with the objective to improve the teaching skills with inclusion of innovative techniques in teaching. These are offered in a wide variety of areas subject matter updating, transforming higher education through innovative pedagogical tools, dynamics of scientific writing in pharmaceutical research, recent advances in pharmaceutical sciences & research, which enables faculty members in the field of technical education to introspect and learn techniques that can help to prepare the students for active and successful participants in a

Knowledge Society.





## International dignitaries

International experts in the pharmaceutical field are invited to deliver lectures series, guest lectures and public lectures in order to provide global scenario of pharmacy.

## Academic Transformation Series

The Nirma Institute of Pharmacy Academic Lecture Series is an initiative of the Institute of Pharmacy, Nirma University, for giving a platform for interactions of Eminent Pharmacy Professionals with the students. Under the series of expert lectures Institute of Pharmacy, Nirma University invites Eminent Speakers from the institutes of National and International repute to deliver the lecture of their expertise. The purpose of the lecture series is to provide a platform for robust exchange of ideas to meet the challenges of healthcare sector. The Expert Lecture Series plays an integral role in motivating students where speakers share the common goal of inspiring student communities with their presentations, speeches and thoughtful words of advice

## Other activities

Other activities like refresher course for registered Pharmacist in association with Gujarat State Pharmacy Council (GSPC), GSPC sponsored National Pharmacy Week Celebration, Continuing Education Program (CEP) etc. are organized to help pharmacist to acquire knowledge of recent trends, updated knowledge on new and banned drugs, drug interactions and side effects.



# INSTITUTE ADVISORY COMMITTEE

The Institute has constituted an Institute Advisory Committee (IAC) comprising eminent personalities from renowned pharmacy institutes, research organisations, and pharmaceutical companies. Periodically, The IAC reviews the overall progress of the Institute with respect to academic, innovation and research practices which enables in improving qualities on all fronts.

## **Prof Chandrakant Kokate**

Vice-Chancellor, KLE University, Belgaum, Karnataka, India

## **Prof Ramesh K Goyal**

Ex-vice Chancellor, Delhi Pharmaceutical Sciences and Research University, New Delhi, India

## **Dr Navin Sheth**

Ex-Vice Chancellor, Gujarat Technological University, Ahmedabad, Gujarat, India

## **Dr Ajay Khopade**


Vice President-Formulations (Non-Oral), Sun Pharma Advanced Research Company Ltd., Nima Compound, Tandalja, Vadodara, Gujarat, India

## **Dr Ketan R Patel**

Chairman & Managing Director, Troikaa Pharmaceuticals Ltd. Commerce House-1, Satya Marg, Bodakdev, Ahmedabad, Gujarat, India



# FACULTY PROFILE



**Prof. Gopal Natesan**  
**Director**  
 Ph.D.


Experience	29 years
No. of Publications	51
No. of Patents	3
Recognized PhD Guide	Yes

## DEPARTMENT OF PHARMACEUTICS



**Prof Tejal A Mehta**  
 Professor and Head  
 MPharm, PhD

Experience	27 years
No. of Publications	102
No. of Books	3
No. of Book Chapters	12
No. of Patents	3
Recognized PhD Guide	Yes



**Dr Mayur Patel**  
 Associate Professor  
 MPharm, PhD

Experience	18.0 years
No. of Publications	51
No. of Books	3
No. of Book Chapters	14
No. of Patents	1
Recognized PhD Guide	Yes




**Dr Shital Butani**  
 Associate Professor  
 MPharm, PhD

Experience	22 Years
No. of Publications	54
No. of Book Chapters	3
Recognized PhD Guide	Yes




**Dr Jigar Shah**  
 Assistant Professor  
 MPharm, PhD, MBA

Experience	19 years
No. of Publications	68
No. of Books	1
No. of Book Chapters	5
No. of Patents	1
Recognized PhD Guide	Yes



**Dr Dhavit Parikh**  
 Assistant Professor  
 MPharm, PhD

Experience	18 years
No. of Publications	12
No. of Book Chapters	3
Recognized PhD Guide	Yes



**Dr Mohit Shah**  
 Assistant Professor  
 MPharm, PhD

Experience	13 years
No. of Publications	5
No. of Patents	3
No. of Book Chapters	1
Recognized PhD Guide	Yes



**Dr. Shruti Rawal**  
 Assistant Professor  
 MPharm, PhD

Experience	2.5 years
No. of Publications	22
No. of Book Chapters	09



**Dr. Anshu Srivastava**  
 Lecturer  
 M.Sc., Ph.D., Post-doc

Experience	14 years (Research + Academic)
No. of Publications	22
No. of Book Chapters	3

# DEPARTMENT OF PHARMACEUTICAL CHEMISTRY

## Prof. Gopal Natesan

Director

Ph.D.

Experience 29 years

No. of Publications 51

No. of Patents 3

Recognized PhD Guide Yes



## Dr Hardik Bhatt

Associate Professor and Head  
MPharm, PhD

Experience 20 Years

No. of Publications 55

No. of Books 4

Recognized PhD Guide Yes



## Dr Vivek Vyas

Assistant Professor  
MPharm, PhD

Experience 18 Years

No. of Publications 75

Recognized PhD Guide Yes



## Dr Bhumika Patel

Assistant Professor  
MPharm, PhD

Experience 16.5 Years

No. of Publications 25

Recognized PhD Guide Yes



## Dr Udit Chaube

Assistant Professor  
MPharm, PhD

Experience 9 Years

No. of Publications 12

Recognized PhD Guide Yes



## Dr Tejas M. Dhameliya

Assistant Professor  
M.S. (Pharm.), PhD

Experience 10 Years

No. of Publications 51

No. of Book Chapters 5

No. of Patents 2

Recognized PhD Guide Yes



# DEPARTMENT OF PHARMACEUTICAL ANALYSIS



## Dr Priti Mehta

Professor and Head  
MPharm, PhD

Experience	25 Years
No. of Publications	80
No. of Book Chapters	3
Recognized PhD Guide	Yes
No. of Patents	2



## Dr Charmy Kothari

Associate Professor  
MPharm, PhD

Experience	19.8 Years
No. of Publications	59
No. of Book Chapters	3
Recognized PhD Guide	Yes



## Dr Nrupesh Patel

Assistant Professor  
MPharm, PhD

Experience	18 Years
No. of Publications	15
Recognized PhD Guide	Yes



## Dr. Misari Patel

Assistant Professor  
MPharm, PhD

Experience	9 years
No. of Publications	9
No. of Book Chapters	1

# DEPARTMENT OF PHARMACOLOGY

## Prof Jigna Shah



Professor and Head  
MPharm, PhD

Experience	27 Years
No. of Publications	70
No. of Book Chapters	11
Recognized PhD Guide	Yes

## Dr Shital Panchal



Associate Professor  
MPharm, PhD

Experience	21 Years
No. of Publications	69
No. of Books	2
Recognized PhD Guide	Yes

## Dr Snehal Patel



Associate Professor  
MPharm, PhD

Experience	22.6 Years
No. of Publications	103
No. of Books	2
No. of Book Chapters	3
Recognized PhD Guide	Yes

## Dr Bhagawati Saxena



Assistant Professor  
MS(Pharm), PhD

Experience	15 Years
No. of Publications	28
No. of Book	1
No. Book Chapters	7
No. of Patents	5
Recognized PhD Guide	Yes

## Dr Richa Gupta



Assistant Professor  
M. Pharm, PhD

Experience	8 years
No. of Publications	19
Recognized PhD Guide	Yes

## Dr. Mithun Singh Rajput



Assistant Professor  
M.Pharm., Ph.D., Postdoc.

Experience	7 years
No. of Publications	31
No. Book Chapters	02
No. of Patents	02
Recognized PhD Guide	Yes

## Dr. Anjali Menon



Assistant Professor  
Pharm.D

Experience	04 years
No. of Publications	06

## DEPARTMENT OF PHARMACOGNOSY



### Dr Niyati Acharya

Assistant Professor and Head  
MPharm, PhD

Experience	22 Years
No. of Publications	45
No. of Book Chapters	15
Recognized PhD Guide	Yes



### Dr Nagja Tripathi

Assistant Professor  
MPharm, PhD

Experience	22 years
No. of Publications	7
Recognized PhD Guide	Yes



### Dr Dipal Gandhi


Assistant Professor  
MPharm, PhD

Experience	16.5 Years
No. of Publications	12
No. Book Chapters	2
No. of Patents	1
Recognized PhD Guide	Yes








 Institute of Pharmacy,  
Nirma University  
Sarkhej-Gandhinagar Highway,  
Ahmedabad-382 481. Gujarat. India.

 +91-02717-241900-04, 079-71652715

 <https://pharmacy.nirmauni.ac.in/>

 [www.facebook.com/NirmaUniPharma](http://www.facebook.com/NirmaUniPharma)

