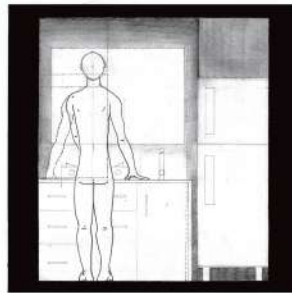


# ARCHITECTURAL DESIGN STUDIO

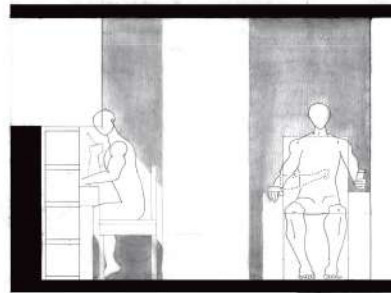
SEMESTER 1 2019-20

## DESIGN

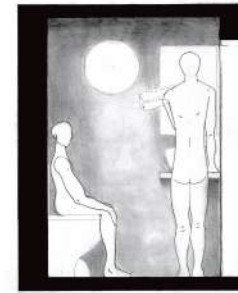
PLANS AND SECTION



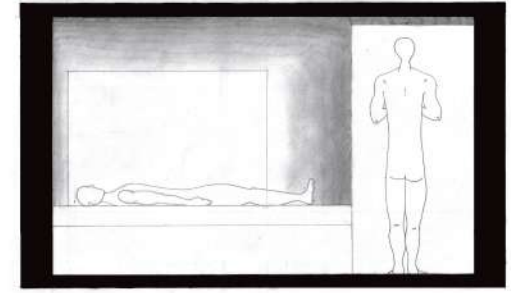
SECTION BB'



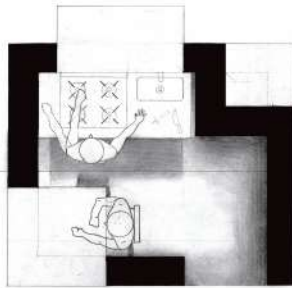
SECTION CC'



SECTION AA'

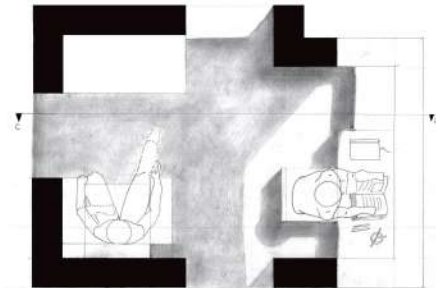


SECTION DD'



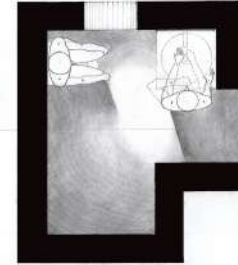
KITCHEN PLAN

LEVEL: -1



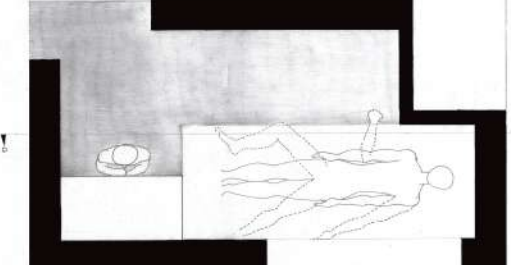
LIVING AREA PLAN

LEVEL: 0



BATHROOM PLAN

LEVEL: 1



BEDROOM PLAN

LEVEL: 2

### BRIEF

The Project is to incorporate all the learning from anthropometry to volumetrics into designing a 4 level space which constitutes a Living space, A kitchen, A bedroom and a bathroom in such a manner that it is sufficient for a single person use.

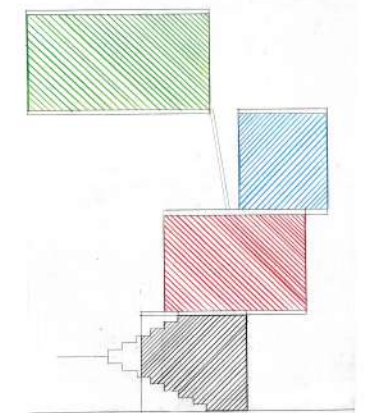
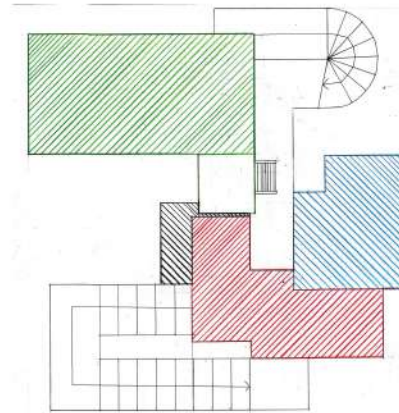
### CONCEPT

The concept for the product was to keep it relevant to how the residential projects are designed, the entrance into the structure is first met by living area and the important function that follow such as washrom and kitchen to be placed in next priority followed by the bedroom, which is something we also see in the residential house plannings, the design has been made solely to satisfy the need for single person space usage, the thought has been put into how the lighting should take place for all the functions and hence suitable fenestrations have been thought of.

MODEL



COMMON PLAN AND ELEVATION



### FACULTY

Shweta Suhane Ma'am  
Manmayee Sharma Ma'am  
Yasin Kabaria Sir  
Raghu Kathpalia Sir



Khushagra Dholakia  
19BAR013