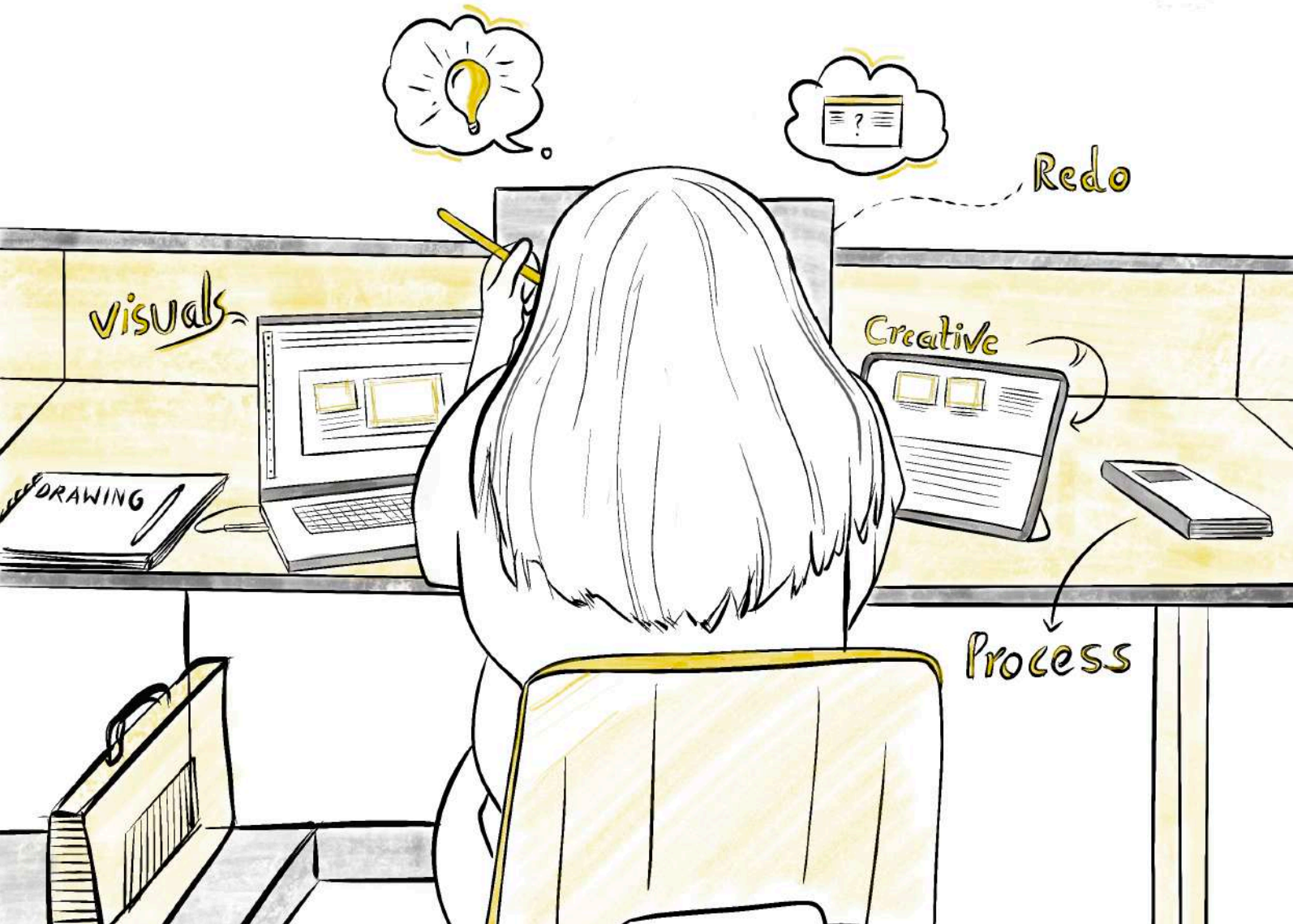


# Portfolio



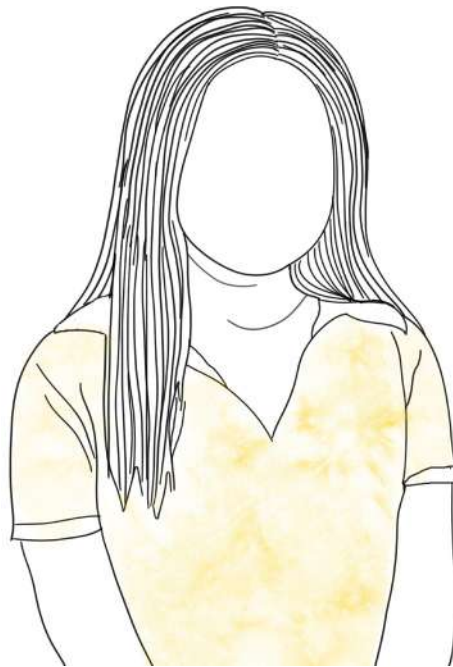












**About Me**



# Zeel Patel

Hey there !

I am a Communication design student pursuing study in Nirma university based in Ahmedabad. I am highly dedicated to my work and love working in the field of creativity. I always strive to learn new things in life and looking forward working with the creative companies.

I have done projects where I worked as intern, freelancer and as a student in Nirma University.





# Contents





**01.**

**Pramukh**

Illustration Design  
Branding



**02.**

**Department of Design**

Branding



**03.**

**Cradle**

UI-UX design



**04.**

**Seven Spring**

Illustration Design



**05.**

**Travel Peak**

Branding



**06.**

**Pushpam**

Publication Design





PRAMUKH®

A CLASS OF ITS OWN

PRAMUKH  
A CLASS OF ITS OWN



GARDENS-2



**About Pramukh :  
(client)**

Pramukh Group of companies is a Residential project by delivering Gujarat's finest commercial and residential spaces. With a major presence in Surat, Vapi and Silvassa, the group has been pioneering the real estate sector of Gujarat by exceeding the expectations of its clients.



In this Illustration, “Timely Delivery Motivated by your dreams” is the attribute explained by showing time through Sand clock.









The design is made depicting luxury, royal and sort of simplistic yet Attractive look. Both the standee serves the purpose of Indoor / Outdoor places



  
**PRAMUKH®**  
A CLASS OF ITS OWN

**4 & 5 BHK**  
**Luxurious Bungalows**

  
**COMING SOON**  


📍 **New Chala, Vapi**

☎ **74062 58000**

📞 **97272 11666**





PRAMUKH®

A CLASS OF ITS OWN

## 4 & 5 BHK Luxurious Bungalows

COMING SOON

📍 New Chala, Vapi

☎ 74062 58000

📞 97272 11666









**About Department of design :**

The form primarily depicts the flourishing nature of the young department. The lowercase d for design has been formed by using basic shapes and following gestalt law of proximity.





























Welcome to the  
Cradle

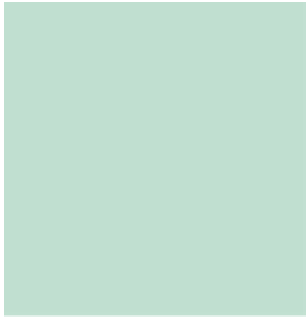




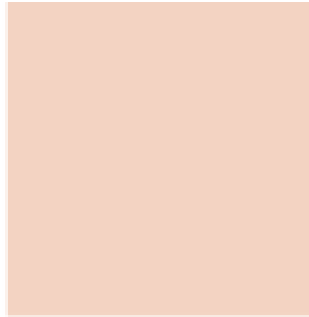
### About Cradle :

Managing work-life and taking care of a baby together is a challenge for every parent. Some parents may also not get a chance to buy supplies for the kids due to their schedules and proper care and teachings .This is the perfect app idea for such parents. Parents can easily decides schedule, book caretakers, refer vaccine chart, listen to music and can use the features of app more efficiently.





R : 192  
G : 223  
B : 208



R : 243  
G : 211  
B : 194



R : 77  
G : 136  
B : 123



R : 114  
G : 114  
B : 114

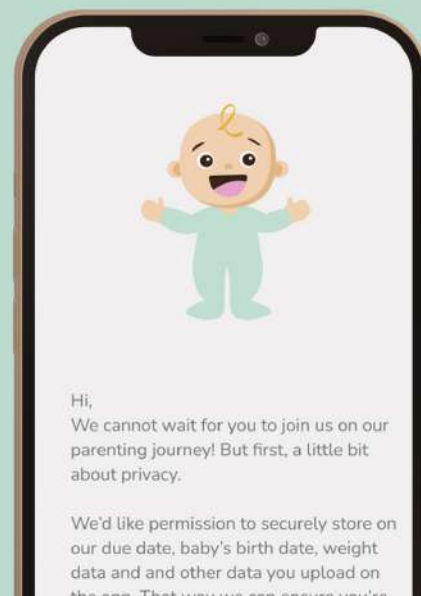
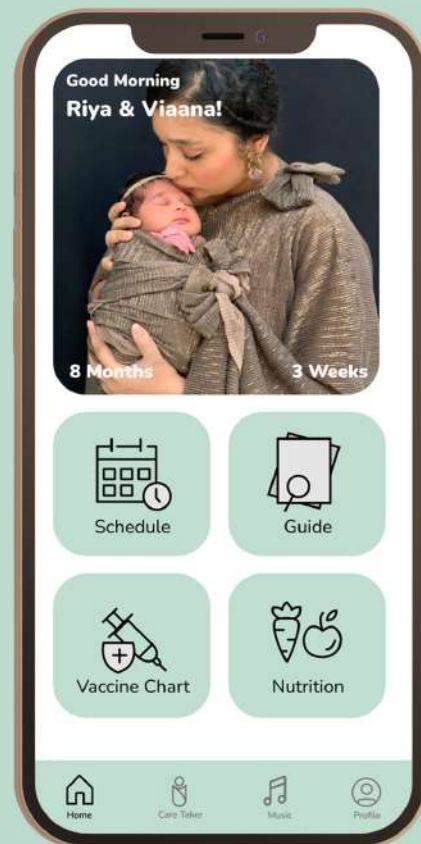
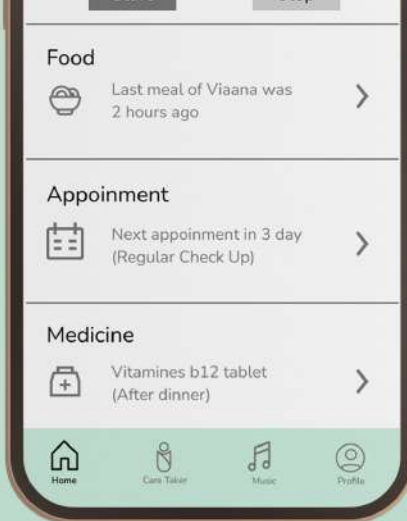
 Colour palette



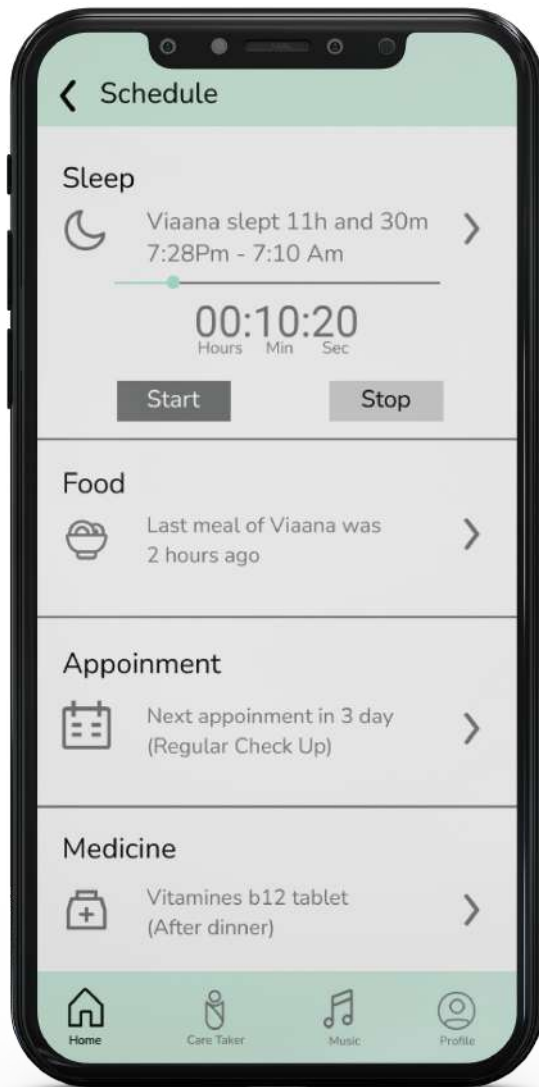
World's first activity  
based positive  
parenting guide.



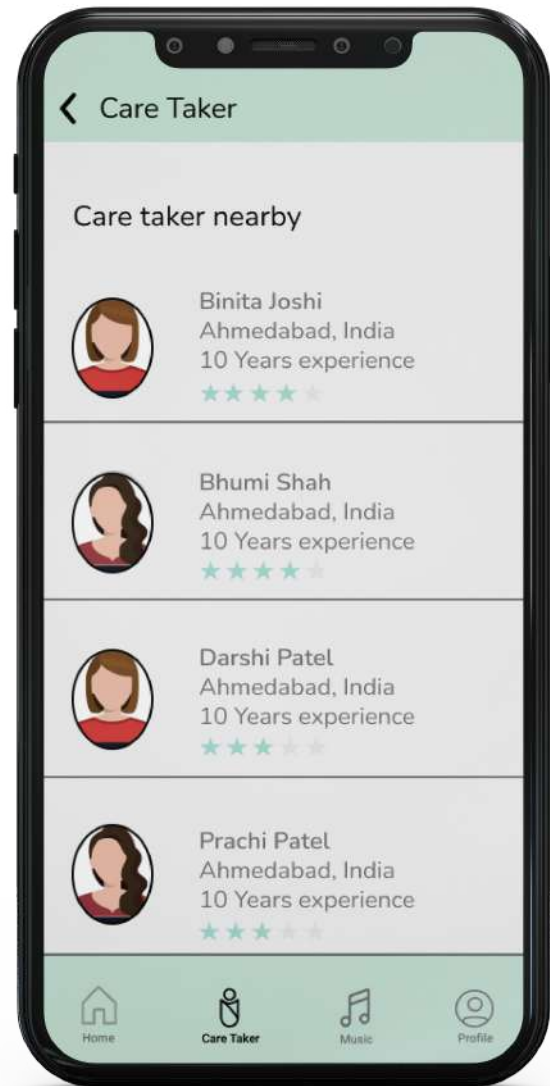


















### **About Seven Spring :**

Seven Spring aims to provide the experience to the body with the help of products which are of unsurpassed quality and value, beneficial both to the health and well-being of human beings. Purity assured by the fact that the elements of nature are used when they reach the epitome of freshness and taste.



The Illustrations are designed for the campaign of Seven spring. The overall theme was "Rainy day with the cup of tea". The main Idea behind this campaign was to promote the different flavours of tea.

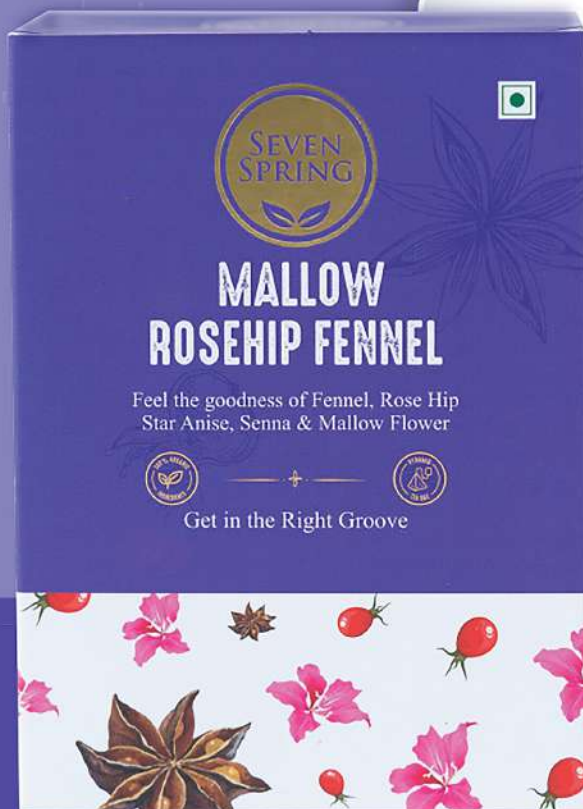






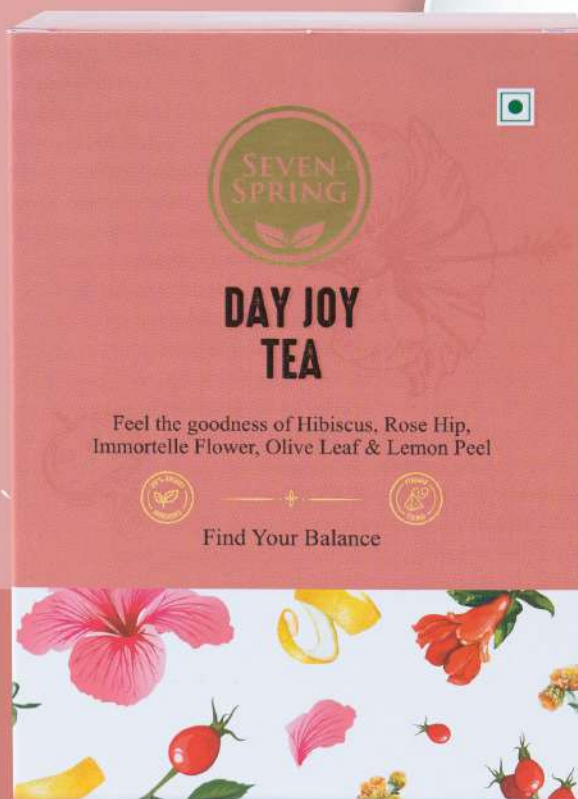
**Settlement for soothing stomach**





A refreshing start of your day





**In harmony with health and happiness**





TRAVEL PEAK



**About Travel peak:**

Travel peak is the Tours & Travel agency, based in Ahmedabad. The logo includes natural elements like mountain peak and tree. The visuals and the color palette depicts the promising and cheerful nature of the company.



[Home](#)[Find Ticket](#)[Promo](#)[About](#)[Service](#)[Login](#)

# Let's Make Your Best Trip Ever!

Lorem ipsum dolor sit amet, consectetur are idipiscing elit, sed do eiusmod tempor incididunt ut labore et om idolore magna aliqua laboris nisi ut

[Book Now!](#)

+123-987-132









EL PEAK

LETTERHEAD

Lorem ipsum dolor sit amet, consectetur adipiscing elit, sed do eiusmod tempor incididunt ut labore et dolore magna aliqua. Ut enim ad minim veniam, quis nostrud exercitation ullamco laboris nisi ut aliquip ex ea commodo quis. Duis aute irure dolor in reprehenderit in voluptate velit esse cillum eu fugiat nulla pariatur. Excepteur sint occaecat cupidatat non proident, culpa qui officia deserunt mollit anim id est laborum. Sed ut perspiciatis omnis iste nam aperiam, eaque ipsa quae ab illo inventore veritatis et quasi totam rem aperiam, eaque ipsa quae ab illo inventore voluptatum magni ducit, ut beatae vitae dicta sunt explicabo. Nemo enim ipsam voluptatum quae voluptas sit amet, consectetur, ut labore et dolore magnam aliquam voluptatem sequi nesciunt. Neque porro quisquam est, qui ratione voluptatem quid voluptas sit amet, consectetur, ut labore et dolore magnam aliquam voluptatem sequi nesciunt. Neque porro quisquam est, qui dolorem ipsum quia dolor sit amet, consectetur, adipisci velit, sed quia non numquam eius modi tempora incidunt ut labore et dolore magnam aliquam quaerat voluptatem.

dolor sit amet, con-  
dolor sit, sed do el-  
labore

Lorem ipsum dolor sit amet, con-  
 sectetur adipisicing elit, sed do ei-  
 usmod tempor incididunt ut labore  
 et dolore magna aliqua.

**JOHN SMIT**



JOHN SMITH  
012345 MAIN STREET 12/A  
INDIA  
+0123456789  
www.travelpeak.com



012345 MAIN STREET  
BOULEVARD 12/A  
CONT











ENTER YOUR OWN PLEASANT WORLD

Pushpam

3 BHK LUXURIOUS APARTMENT

Pushpam

3 BHK LUXURIOUS APARTMENT



**About Pushpam :**

Pushpam Flora is a residential projected located at Thaltej, Ahmedabad. The Brochure is designed in a way which gives luxury, minimal and colorful look. The colours used here depicts the flora in nature and the Typography compliments the overall layout of the Brochure.





“

Find the paradise on earth,  
straight out of your dream homes  
you always wanted to own.

Like a shining star..

Pushpam

would help your lifestyle  
elevate and take you to the leagues of  
the extra ordinary.

Luxury is attention to  
detail, originality, exclusivity  
and above all quality.

”





THIS IS FULFILLMENT !  
YOUR LIFE  
YOUR HOME  
YOUR WISHES

Amazingly stylish, your Pushpam home commands high living standards and spacious comfort with attention to the highest level of excellence and demanding standards of quality.

Welcome to Pushpam



## AMENITIES

- 2 Landscaped Garden
- 2 Car Parking per Flat
- 2 Elevators per Block
- Children's Play Area
- Gymnasium
- Home Theater
- Indoor Sports Room
- Society Office
- Pick up/Drop off Zone
- Visitor's Parking
- Provision for D2H connection
- CCTV connection on Ground Floor & Basement
- Intercom from Security Cabin
- Provision for high speed internet connectivity
- Spacious Foyer on each Floor





## SPECIFICATIONS

### STRUCTURE

- > Earthquake resistant R.C.C. frame structure as per Structural Engineer's design.

### PLASTER AND PAINTS

- > M.A.A. plaster inside with wall putty finish.
- > Double coat Sand faced plaster with acrylic paint outside.

### FLOORING

- > Italian marble flooring in drawing, dining & kitchen.
- > Double charged vitrified tiles in all other rooms.

### KITCHEN

- > Black granite with sandwich platform, premium sink with drain board
- > Dado upto lintel level

### WASH

- > Polished kota stone/ anti-skid tile

### BATHROOMS

- > Glazed tiles upto lintel level

### DOORS AND WINDOWS

- > Decorative main door with wooden frame.
- > Laminated Flush door in all rooms with wood or stone frame.
- > Double glazing UPVC window.
- > Laminated flush door in toilets with wood or stone frame.

### ELECTRIFICATION

- > Three phase
- > Concealed copper wiring
- > Modular switches
- > M.C.B./ E.L.C.B. for safety of equipments.

### ELECTRIC POINTS

- > Sufficient light and fan points in all rooms.

### TV & TELEPHONE POINT

- > TV points in all rooms.
- > Telephone point in drawing room and provisioned in all bedrooms.
- > Intercom facility in each flat from security cabin.

### A.C. POINT

- > A.C. points in all bedrooms and drawing room.

### PLUMBING

- > UPVC pipes for regular water
- > CPVC pipes for hot water supply.

### SANITARY

- > All bath area fittings of premium quality
- > European wall hung W.C. in all bathroom

### SECURITY

- > C.C. TV at ground floor and basement area

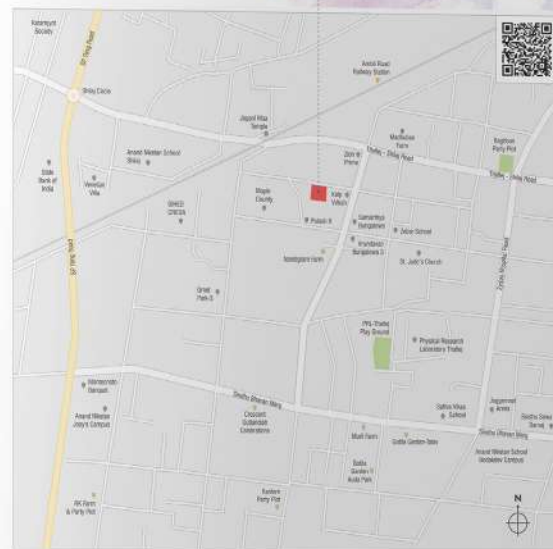
### SPECIFIC NOTES

All rights reserved to developers and architects for any changes in plan, standard and specifications.  
Regular payments shall meet interest or completion of housing.  
Stamp duty, registration charges, legal charges, A.M.C. charges and E.C.D. charges including mutation and cable charges will be charged extra.  
GST or any such additional taxes will be applicable extra.  
Maintenance deposit will be charged extra.  
External changes shall not be allowed; only internal changes shall be done with prior permission and shall be charged extra in advance.

Note: This brochure is for information purposes only. It does not form part of the agreement or any legal document.

## REACH US

Pushpam







## Contact

+91 9727271190



## Email id

19bdc026@nirmauni.ac.in



## Behance

[www.behance.net/zeelpatel2215](http://www.behance.net/zeelpatel2215)







