

# **PORTFOLIO.**

**DISHA PATEL. COMMUNICATION DESIGNER**

Illustration  
Publication  
Photography  
Branding

DEEP WATER COMIC BOOK

01.

TRAINIAN EXPRESS MENU DESIGN

02.

PHOTOGRAPHY

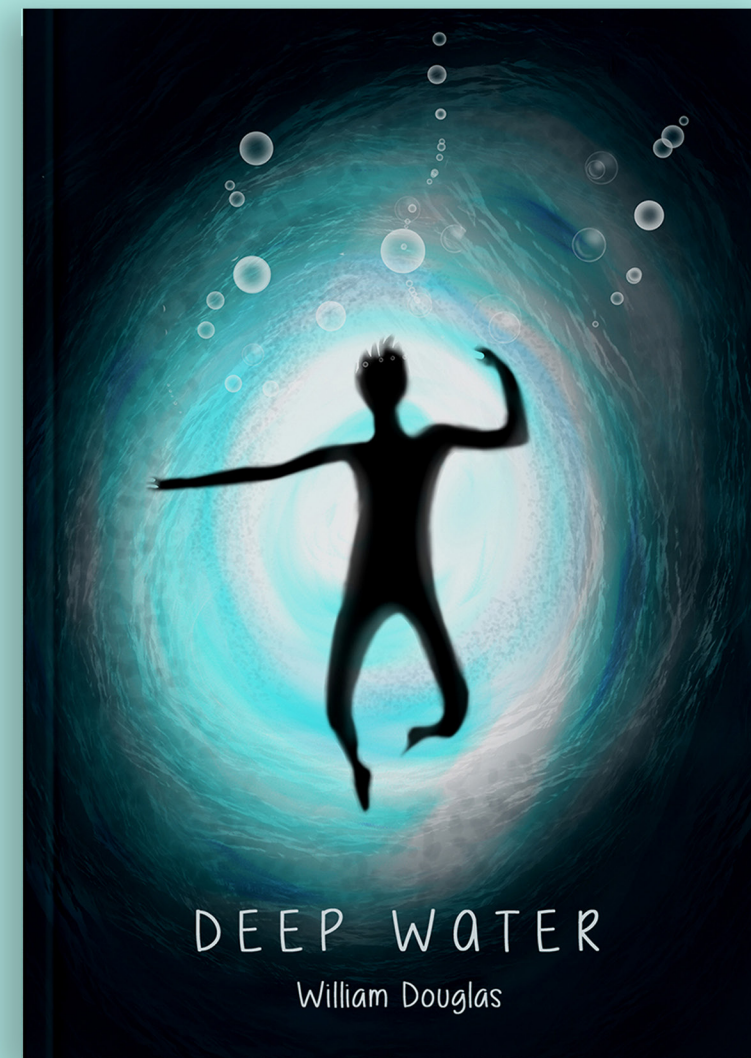
03.

04.

05.



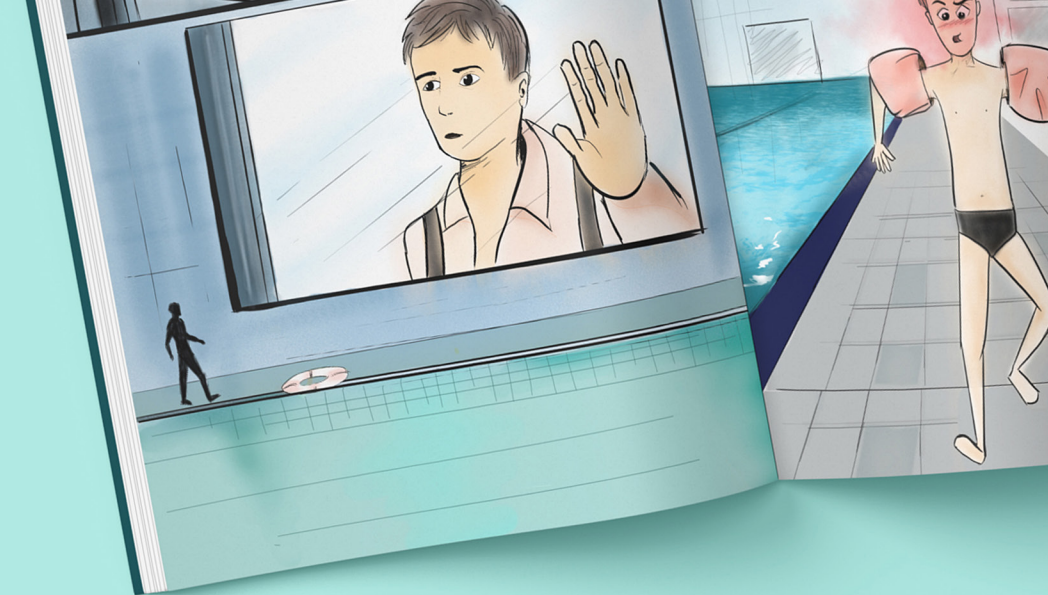
01.



## DEEP WATER

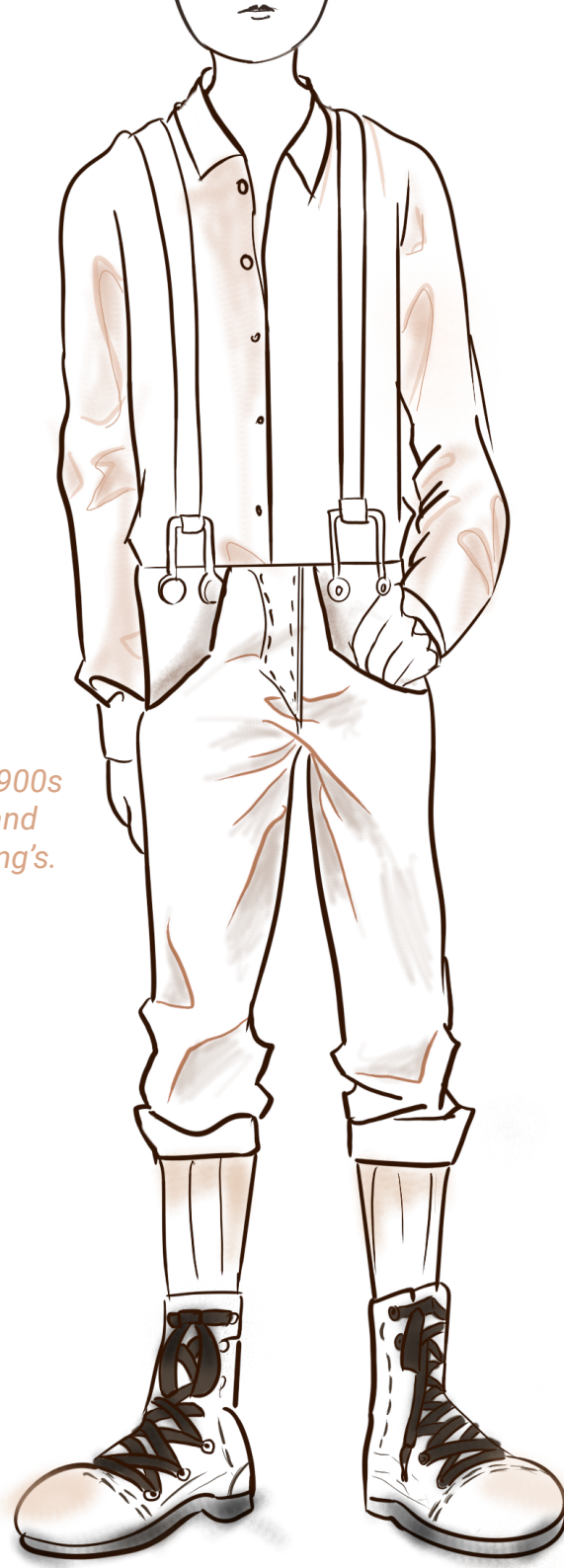
### COMIC ILLUSTRATION BOOK

A great Story by William Douglas - Deep Water, illustrated into a comic. A Story to conquer our fears.





The 1900s  
Kids and  
clothing's.



WILLIAM  
DOUGLAS

### Personality

Positive thinker  
Phobia of water  
Truthful  
Introvert

## CHARACTER DESIGN

11 yrs. old  
Shy  
skinny

Reference



## FONT STYLE

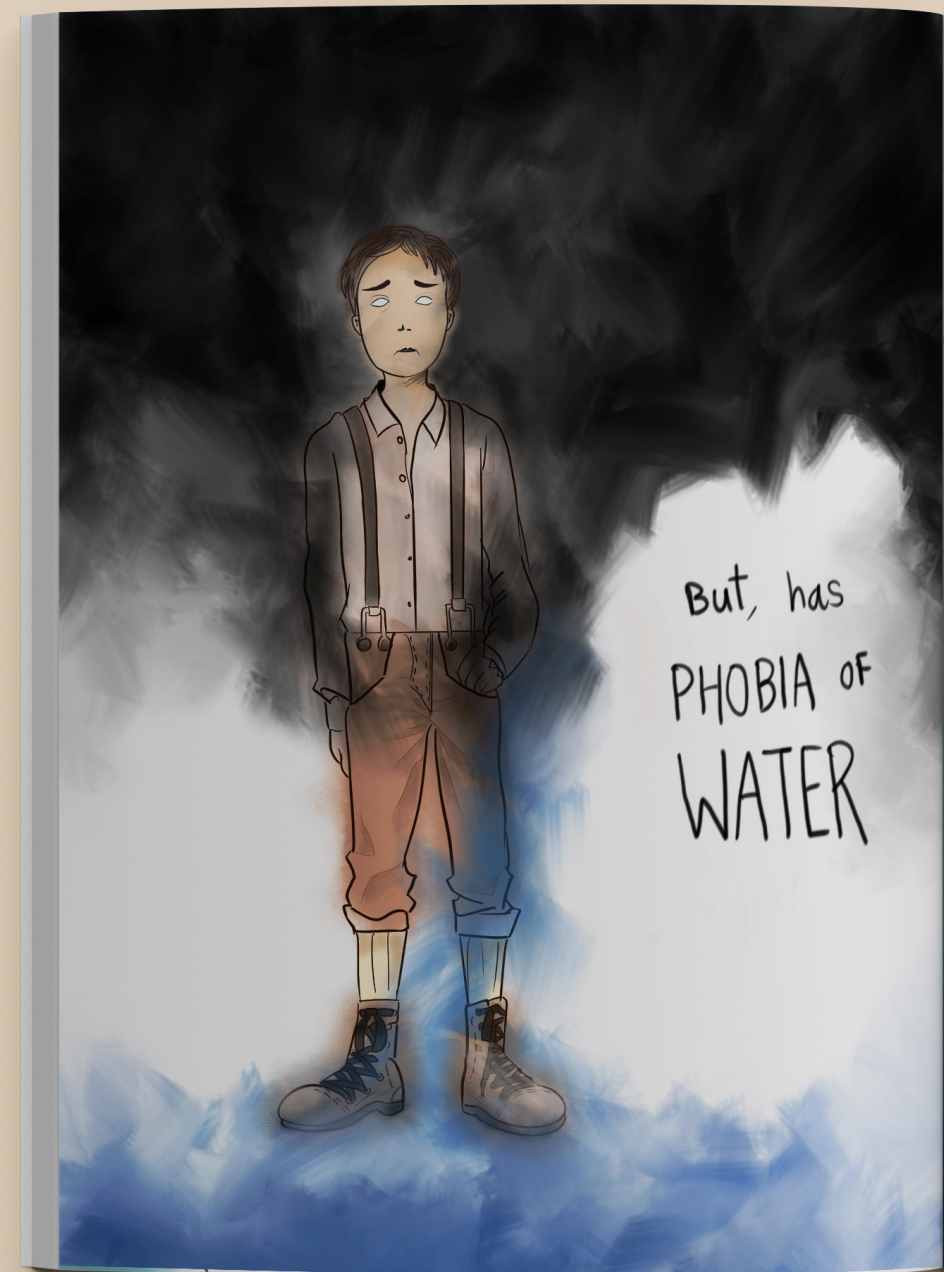
# SKINNY



IT HAD  
HAPPENED  
WHEN I  
WAS ELEVEN  
YEARS OLD

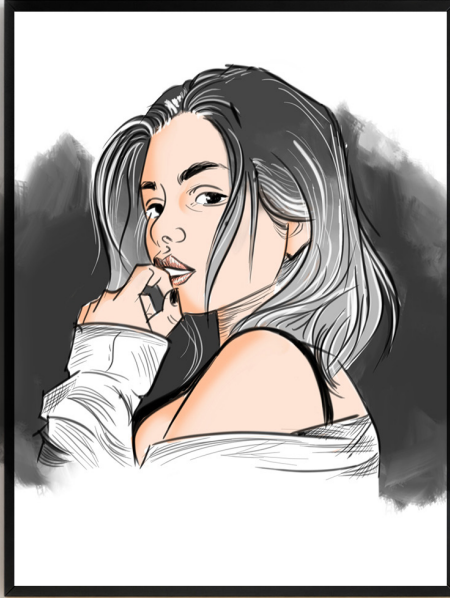
48 pt







OTHER  
ILLUSTRATIONS



A Chameleons' girl  
adopting to any colour in  
Background



A crewneck  
sweatshirt



A thin line sketch illustration  
of black flower girl.







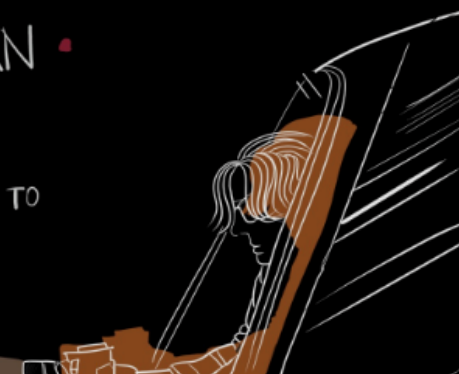
DIRECTOR •  
SHAUNAK  
ROYCHOWDHURY

EDITOR •  
SAFFRON  
DAVE

CAMERAMAN •

PARAMVEER  
SINGH

SPECIAL THANKS TO  
HANSRAJ BHAI



CASTING • COSTUMES • COSMETICS  
HEVEA KALAVADIA



STARRING •  
KUSHI MEHTA

SCREENPLAY • ILLUSTRATIONS  
SAUMYA  
SOGANI



DISHA  
PATEL,  
SAFFRON  
DAVE

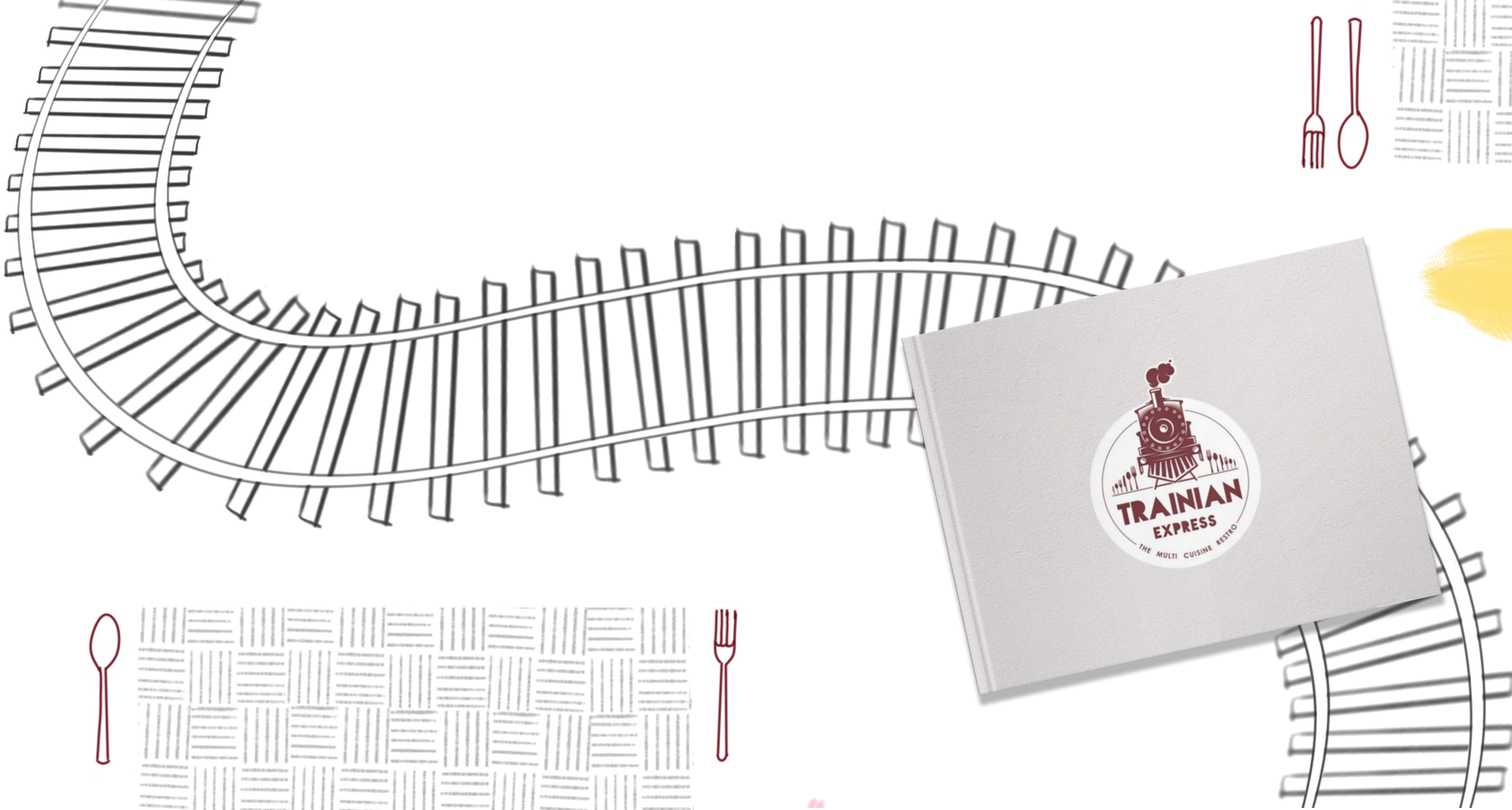
**The light**

Created illustrations  
for film credits.





# 02.



## MENU DESIGN

### PUBLICATION DESIGN

The menu that attract people's attention on main special dishes.

The menu that reflect the ambience of the resto, themed on train service for food.





## Project

To design the Menu card of the restaurant – Trainian Express



## Target Audience

Primary- Family  
Secondary – Youngsters  
(Age 18 – 25)



## Background

Trainian Express – The Multi Cuisine Resto is a Vegetarian restaurant for all age people, located in Vesu, Surat. It has a very different ambience where you get served through table track train, therefore makes it unique from other restaurants on serving method. Also, it's the first ever train service resto in Surat. It serves north Indian, Chinese, Italian, and Continental Food.



## Objective

The menu should be such to attract people's attention on main special dishes, the menu should reflect the ambience of the resto, themed on train service for food. A separate menu booklet for drinks separate from main menu.



*The trainian  
Express Resto,  
Surat*





# MAIN ELEMENTS



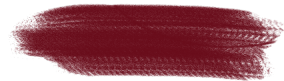
**Train Signal**  
*A visual display device that convey instructions*

**Spoon & Fork**  
*A needed cutlery of food place*



**Table mat**  
*A needed component of table*

**Train tracks**  
*Food served on train in resto*



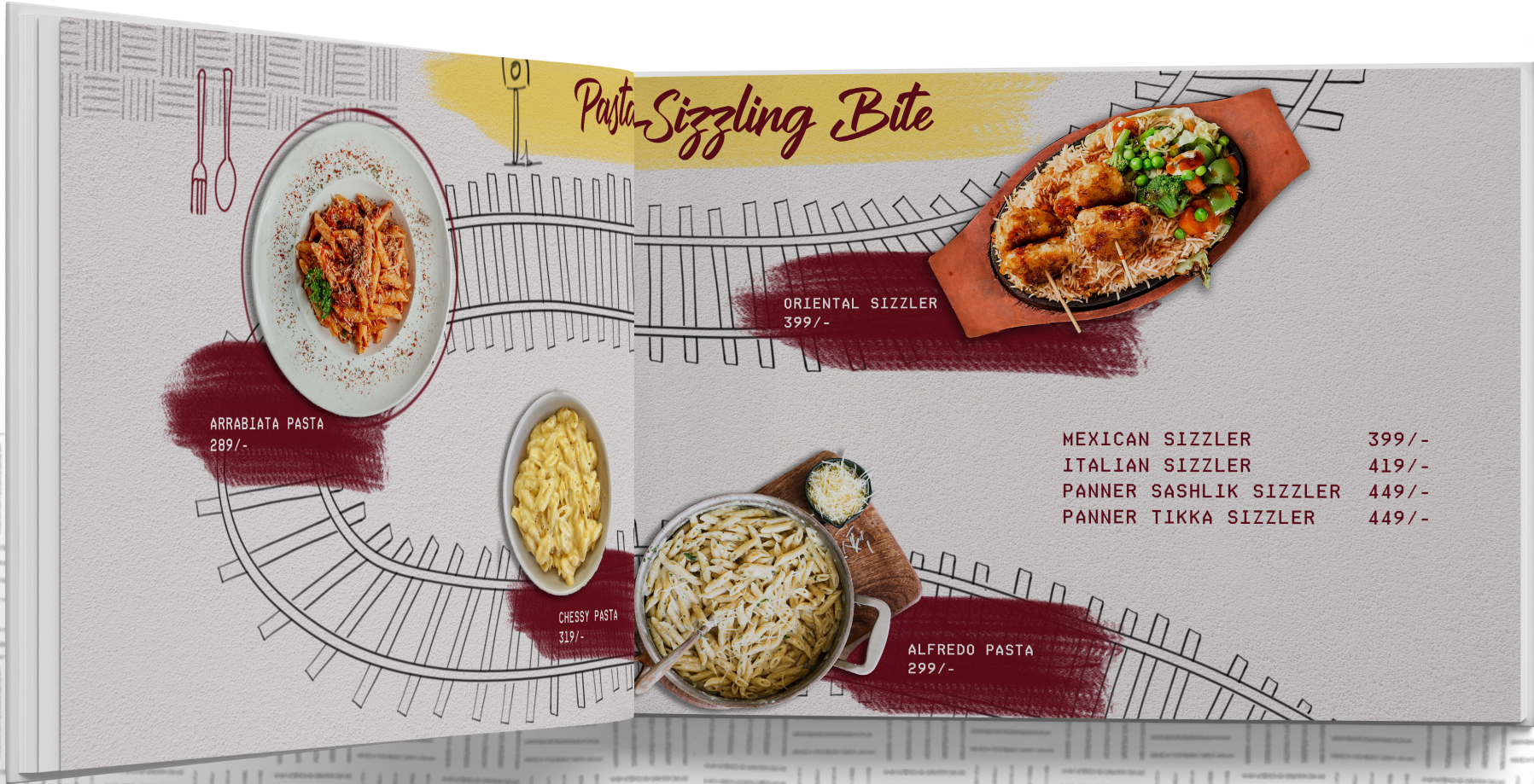
**Restro Colours**

# FONTS



Brilliantte Presona

Ticketing









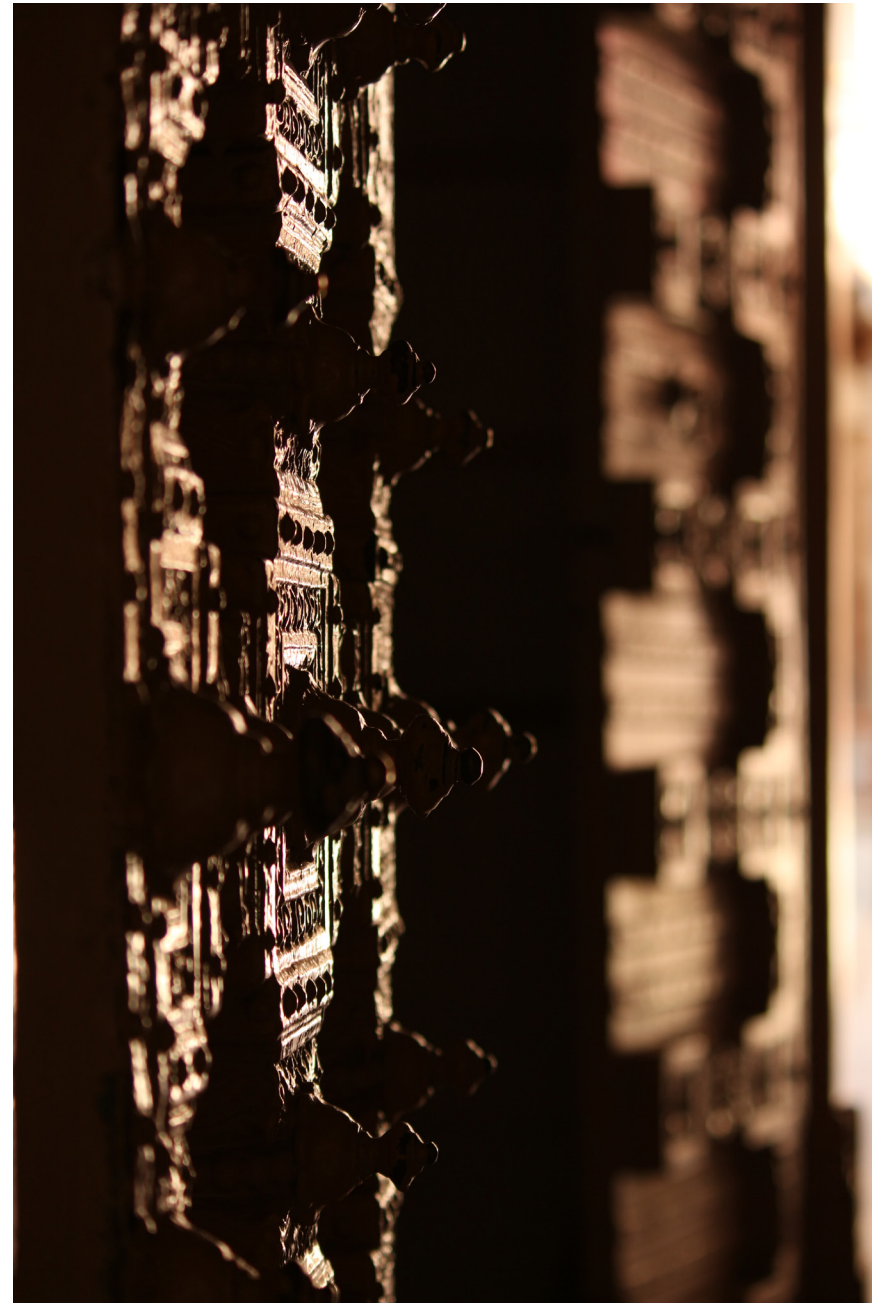
# PHOTOGRAPHY







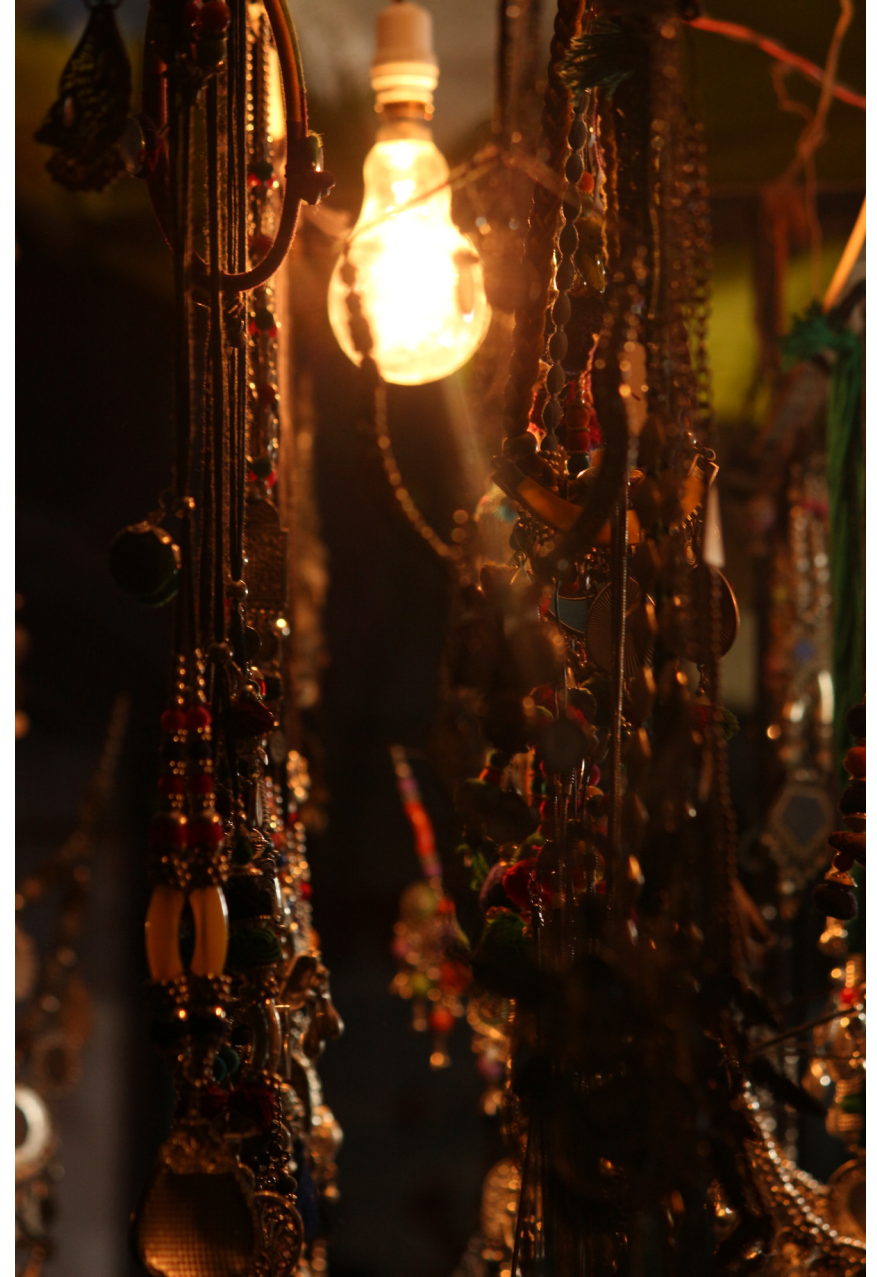
Swaminarayan temple  
Ahmedabad







Manek chowk  
Ahmedabad







*Gandhi Ashram  
Ahmedabad*







*A stray cat sleeping  
Surat*







*Jama masjid  
Ahmedabad*





