



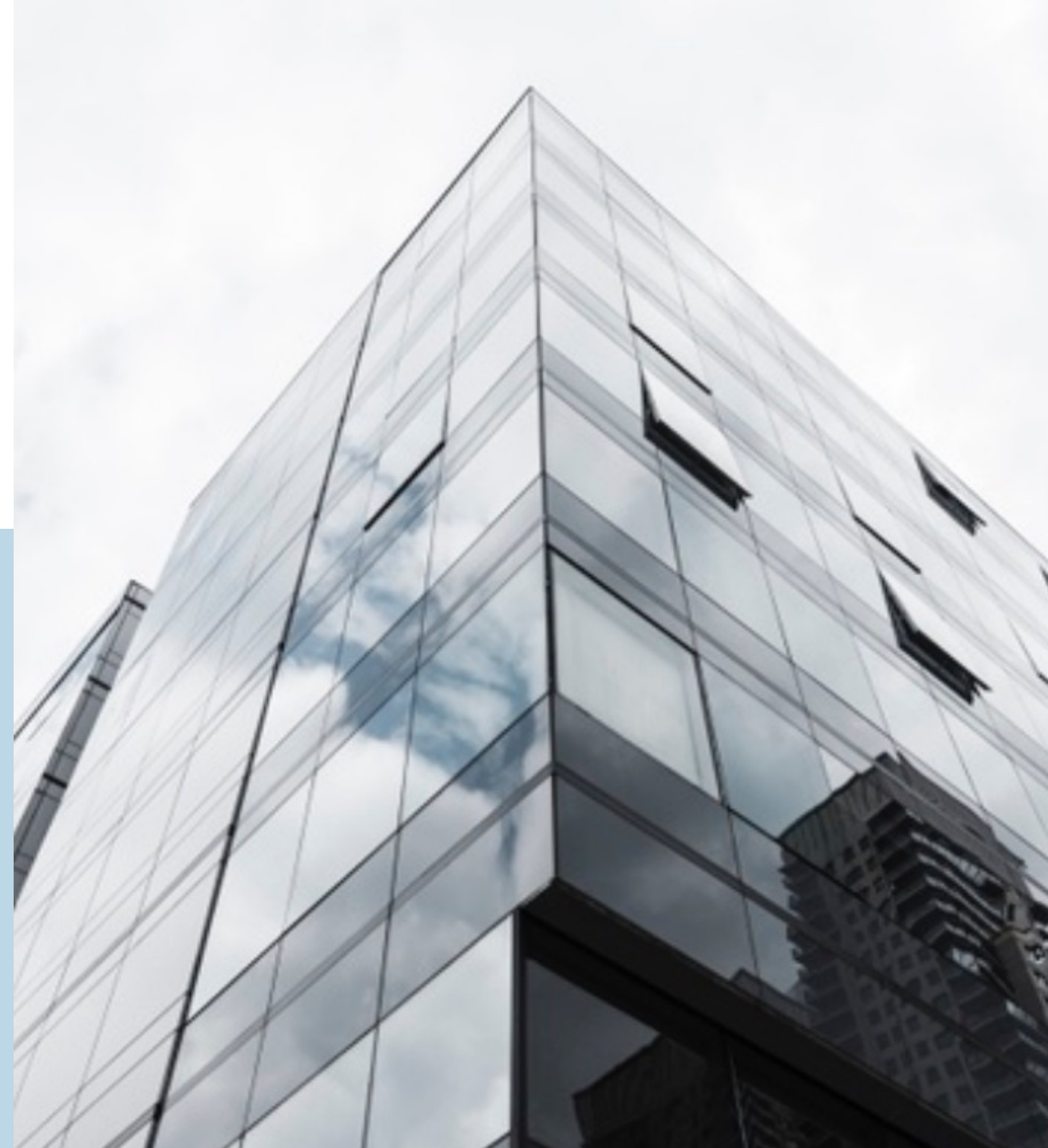
ACE Knowledge & Research Portal (Online)

A Comprehensive Portal For Financial & Analytical Information.



ACE Knowledge & Research Portal

Ace Knowledge Portal Is Online Database, Provides Data On Companies, Industries, Mutual Funds, Macro Economy And Live Markets. It Also Provides Historical Information On Company, Industry And Economy Which Can Be Use For Project And Analysis Purpose.



Feature:

Covered Major Indian Companies, Industries

Coverage

Company

Sector

Mutual Fund

Macro Economy

Ace Digital Library

Market Live



- Database covers more than 40,000 Indian companies in which, more than 33,000 private companies
- **Historical** Financials and **Share Price** data of over 15 years.
- Provides data for more than 25,000 **Finished Products / Raw Material** details
- 1750 financial data fields compiled from **Annual Reports**
- **Profit & Loss, Balance Sheet** and **Cash Flow**'s are directly linked with Annual report to ensure authenticity "as reported" data by the company.
- **NIC Activity** Classification for each company as per NIC 2008
- Business Activity classification for all companies based on Products, Segment and Abstract.
- **13 Different Industry** specific financial format presentation on Profit and loss, Balance sheet and cash flow.
- **Balance Sheet** - New as per Schedule VI with option to see historical basis
- **Excel Plugin** - Database can be accessed through excel

Coverage

Company

Sector

Mutual Fund

Macro Economy

Ace Digital Library

Market Live



- Industry analysis (Sector Outlook) for around **40 industries** which covers demand & supply, growth factors, Budget impacts, Interest Rate changes, Infrastructure costs etc.
- Industry NEWS covers company wise **NEWS** helps to have a quick look on current activities for a industry on day to day basis.
- Financial **Score Card** with Key numbers for companies with their **Industry Aggregate**.
- Facility to view Industry trend, growth based on financial & ratio numbers for industries aggregate & comparative basis.
- **Aggregate and Comparative** quarterly results for industries.

Coverage

Company

Sector

Mutual Fund

Macro Economy

Ace Digital Library

Market Live



- Database of **45 AMCs** and more than **8000 Schemes** that includes basic details of the schemes and portfolios, asset / sector-wise details, fund manager's details.
- **Historical Data** on **NAVs** since inception, Ratios, Returns and Dividends Each Screen designed like query that helps user to filter data as per their format.
- Features like **Slicing and Dicing, Pivot Features** helps user to format data into their requirement format.
- Reduces user's more time in formatting the data or reports by using **Report Builder** and **Save Templates**.
- Quartile Analysis, Fund of Fund, Investment trend Calculator, Event Calendar, data on stock prices, indices etc..
- **Excel Plugin** - Database can be accessed through excel

Coverage

Company

Sector

Mutual Fund

Macro Economy

Ace Digital Library

Market Live



- **Foreign Exchange** Reserves, Call Money Rates, Data on Monthly/Annual foreign investments and IIP Index (Base Year: 2004-05)
- **Money and Banking** - Weighted Average Call Money Rates, Policy Rates, Lending/deposit rates and Data on G-Secs.
- **Historical Data on Rupee Rates** against USD, Euro, Japanese Yen and Pound Sterling .
- **GDP** by Economic Activity & % Distribution, Components of GDP, Whole Sales Price index, Mobile subscribers Data.
- **Commodity** Spot Prices, Domestic and International Commodity Prices and Data on Global Indices, FII Investments (Domestic and Foreign).
- Data on Chemicals (**Exports & Imports**), Tea, Rubber, Auto, Tractor.
- **Economy News** Covers on Budget Impact, Monetary Policies, Inflation, GDP, Imports and Exports, Policy announcements, and taxes & duties rate changes.

Coverage

Company

Sector

Mutual Fund

Macro Economy

Ace Digital Library

Market Live



- **Digital Annual Reports** - Listed and unlisted Companies Annual reports can be downloaded in PDF directly.
- **Transcripts** - Concall and Analyst Meet reports can be downloaded directly. Rates, Lending/deposit rates and Data on G-Secs.
- Accord **Research Reports**, Third Party Research (Broker's) Reports available in PDF form.
- Digital Results - **Quarterly Results** can be downloaded in PDF.
- **Corporate Announcements** such as Insider Trading, Substantial Acquisition of Shares, etc. Can be downloaded in PDF.

Coverage

Company

Sector

Mutual Fund

Macro Economy

Ace Digital Library

Market Live



- **Equity** - News, Historical returns, Contribution to index, Market map, Profit report, Gainers, Losers, Sector watch.
- **Derivatives** - Snapshot, Summary, News, Top gainers, Top losers, Top Value Traded, Put Call ratio, Nifty Snapshot, Strategy.
- **Economy** - Economic news, Analysis, Monthly review, Sector news, Sector Analysis
- **Commodities** - News, Gainers & Losers, Advances & Declines, Highs & Lows, Closing Prices, Volume toppers.
- **Corporate Action** - Bulk & Block deals, Board meeting, Insider Trading's, Pledged Share details, Result Announced.
- **Technicals** - Bullish Reversal, Morning star, Evening Star, Shooting Star, Stock Trading, Gap Up, Gap Down
- **IPO** - Open issues, Forthcoming Issues, Closed Issues, Top & Bottom Performers, IPO News & Analysis, Basis of Allotment.
- **Other Market** - ADR Price, Global Indices, Forex, Currency Derivatives.

Menu Selection :

Company Selection :

Company Search Listed

Enter Company Name

bata

SEARCH

☒ "Starts with"

☐ "Contains"

Enter **NSE,BSE** Codes for a Company or enter a few characters from the Company's name and Choose "Starts with" or Contains option

Selection Result :

Search Results for :: " bata "		
Company Name	NSE Code	BSE Code
Bata India Ltd.	BATAINDIA	500043
Bata Properties Ltd.		

COMPANY
Screens

Company Snapshot:



Bata India Ltd.				Chairman	Ashwani Windlass	BSE Symbol	500043	
Industry	Retailing			Managing Director	Rajeev Gopalakrishnan	NSE Symbol	BATAINDIA	
House	Bata - MNC			Secretary	Arunito Ganguly	Bloomberg	BATA IN	
Registered Office	27 B,Camac Street,1st Floor Kolkata 700016 ,West Bengal					ISIN Code	INE176A01028	
Close Price	1271.50	52 Week Range	1017.20 - 1897.00		Market Cap	163423	Beta	0.6642
Previous Price	1287.70	Curr.Vol	46576.00		3 Months Avg Vol	68284.63	Face Value	5

Stock Return Performance (in %)				<input checked="" type="radio"/> M Cap	<input type="radio"/> Sales	<input type="radio"/> PAT
Company Name	1W Rtn%	1M Rtn%	6M Rtn%	1Y Rtn%	3Y Rtn%	5Y Rtn%
Bata india	-2.16	-8.58	-27.58	-7.02	120.82	121.34
Avenue Supermarts	1.46	-2.73	23.73	71.98	148.68	0.00
Trent	1.40	15.62	14.04	44.42	154.24	415.15
Aditya Birla Fashion	0.66	-6.51	-48.00	-39.04	-31.13	-33.72
Future Retail	-22.56	1.20	-69.88	-77.59	-73.55	0.00
BSE 500	1.23	6.13	-11.79	-6.14	3.20	27.46
Financial Highlights (Rs.Millions)				<input checked="" type="radio"/> Standalone	<input type="radio"/> Consolidated	
Year End	Mar 2019	Mar 2018	Mar 2017	Mar 2016		
Equity Paid Up	642.64	642.64	642.64	642.64		
Reserve	16822.69	14144.50	12610.17	11578.21		
Total Debts	1025.17	1059.32	1039.71	1028.71		
Net_Block	5671.56	4876.31	4039.87	3797.46		
Net Sales	29284.44	26292.71	24671.61	24153.92		
PBIDT (Excl OI)	4880.13	3644.10	2885.90	2898.15		
PAT	3296.60	2235.78	1587.48	2175.95		
PAT	0	0	0	0		

Price Volume Chart				<input checked="" type="radio"/> 1D	<input type="radio"/> 1M	<input type="radio"/> 3M	<input type="radio"/> 1Y
Key Maket Ratio							
Latest EPS(₹)	25.44	Latest PE (x)	49.99				
Latest CEPS(₹)	48.45	P/CEPS	26.25				
Price / BV(x)	8.62	Price / Sales	0.04				
EV / EBIDTA(x)	17.25	EV / Sales	5.08				
Div Yield %	0.31	MktCap/Sales	5.35				
Industry PE(x)	77.73						

Company Financials:

Get financial such company such as Balance Sheet, Profit & Loss, Cash Flow, Forex,Segment Finance, Subsidiaries, Investment etc.

General
Financials
Financial Highlights
Financial Highlights Cons
Balance Sheet
Balance Sheet Cons
Balance Sheet (New)
Balance Sheet Abstract
Profit & Loss
Profit & Loss Cons
CSR
Cash Flow
Cash Flow Cons
Segment Finance
Segment Finance Cons
Forex
Expenditure on R & D
P & F Consumption
P & F (Unit Wise)
Deferred Tax
Deferred Tax - Cons
Subsidiaries
Related Party Transaction
Related Party Details
Investments
Company Vs Industry
Banks – Sector Exposure

Financial Highlights

Bata India Ltd. Industry: Retailing House : Bata - MNC										
(Indian Rupee .in Millions) Change My Settings										
↴	Mar 2019	Mar 2018	Mar 2017	Mar 2016	Mar 2015	Dec 2013	Dec 2012	Dec 2011	Dec 2010	Dec 2009
Inc / Exp Performance										
Net Sales	29284.44	26292.71	24671.61	24153.92	26939.95	20651.74	18424.53	15425.35	12581.94	10916.52
Total Income	29969.87	26801.15	25138.07	24421.10	27372.28	20965.22	18724.05	16734.49	12749.76	11023.09
Total Expenditure	24404.31	22648.61	21785.71	21255.77	23430.81	17315.04	15570.76	13033.00	10918.30	9644.24
PBIDT	5565.56	4152.54	3352.36	3165.33	3941.47	3650.18	3153.29	3701.49	1831.46	1378.85
PBIT	4925.40	3548.33	2485.62	3124.39	3464.38	2957.44	2639.54	3290.48	1506.36	1099.62
PBT	4782.65	3400.14	2335.75	2966.49	3286.68	2826.24	2519.64	3194.03	1429.97	1002.63
PAT	3296.60	2235.78	1587.48	2175.95	2311.72	1907.43	1716.03	2258.39	953.52	672.27
Cash Profit	3936.76	2839.99	2237.53	2963.96	3104.06	2499.40	2229.78	2669.40	1278.62	951.51
Sources of Funds										
Equity Paid Up	642.64	642.64	642.64	642.64	642.64	642.64	642.64	642.64	642.64	642.64
Reserves and Surplus	16822.69	14144.50	12610.17	11578.21	9578.81	7767.37	6360.66	5100.42	3339.73	2700.24
Net Worth	17465.33	14787.14	13252.81	12220.85	9953.52	8130.50	6714.75	5446.85	3635.59	2965.77
Total Debt	0.00	0.00	0.00	0.00	0.00	0.00	0.00	0.00	137.74	250.49
Application of Funds										
Gross Block	5671.56	4876.31	4039.87	3797.46	6954.75	6015.27	5612.80	5003.73	4175.55	3748.58

Advanced Query:

Advance query use for to get data for more then one company or for industry, house etc. Or want some conditional /formula data

Select Folder

Select Template

Select

Select Template

Load Template

Load Expression

Delete Template

Create Formula

General

Aggregate

Product & Raw Material

Search Companies

Search

☒Start with

☐Contains

Bank - Private

Select House

Select Others

Select Indices

A

BSE

Select Folder

☒Listed

☐UnListed

☐All

☐Listed-Finance

☐All Companies

Select Company

Select From List: 18

AU Small Finance Bank Ltd.

Axis Bank Ltd.

Bandhan Bank Ltd.

City Union Bank Ltd.

DCB Bank Ltd.

HDFC Bank Ltd.

ICICI Bank Ltd.

IDBI Bank Ltd.

IDFC First Bank Ltd.

IndusInd Bank Ltd.

Kotak Mahindra Bank Ltd.

RBL Bank Ltd.

The Federal Bank Ltd.

The Jammu & Kashmir Bank Ltd.

The Karnataka Bank Ltd.

The Lakshmi Vilas Bank Ltd.

The South Indian Bank Ltd.

Yes Bank Ltd.

>>

>

<<

<

Reset All

Save My Set

Clear Selection

Select From List: 0

Go

+

 General

-

 Finance

Financial Highlights

Financial Highlights Consolidated

 Balance Sheet Abstract
 Balance Sheet
 Balance Sheet Consolidated
 Profit And Loss
 Balance Sheet (New)
 Balance Sheet Consolidated
 Profit And Loss Consolidated

+

☐ Increase/Decrease in Stock

+

☐ Raw Material Consumed

+

☐ Power & Fuel Cost

+

☐ Employee Cost

+

☐ Other Manufacturing Expenses

+

☐ General and Administration

+

☒ **Selling and Distribution Expenses**

+

☐ Miscellaneous Expenses

☐ Less: Expenses Capitalised

☐ Total Expenditure

☐ Operating Profit/(Loss)

☐ Show Actual value for formulae
 ☐ Show period for formulae
 ☐ Annualised
 ☐ Consolidated priority
 Unit

Crore

☐ Priority On Full Year
☐ Priority On Period
 Precision

2

Period Selection

☐ Single Period
☐ All Period
☐ All Period,All Selections

Query Condition

☒ AND
☐ OR

Apply Criteria On

☒ ALL
☐ ANY

1

ADD

Remove

Remove All

Move Up

Move Down

Change Selection

Compile

Save

Order	Table	Field	Period		Criteria		Display	Sort
1	PL_1	PL_Year End	L	<input checked="" type="checkbox"/>	▼
2	PL_2	PL_Year End1	L-1	<input checked="" type="checkbox"/>	▼
3	PL_1	PL_Year end date	L	<input checked="" type="checkbox"/>	▼
4	PL_3	PL_Year End2	L-2	<input checked="" type="checkbox"/>	▼
5	PL_2	PL_Year end date1	L-1	<input checked="" type="checkbox"/>	▼
6	PL_1	PL_Less: Excise Duty	L	<input checked="" type="checkbox"/>	▼

Advanced Query:

Advance query use for to get data for more then one company or for industry, house etc. Or want some conditional /formula data

Query Compiled Output

O/P SUMMARY

Total Selection : 18 Total Matching : 18 Total Unmatching : 0 Total Records : 18 Unit : Crore

Sr.No	Accord Code	Company Name	PL_Year End	PL_Year End1	PL_Year end date	PL_Year End2	PL_Year end date1	PL_Less: Excise Duty
1	286335	AU Small Finance Bank Ltd.	202003	201903	31-Mar-2020	201803	31-Mar-2019	
2	132215	Axis Bank Ltd.	202003	201903	31-Mar-2020	201803	31-Mar-2019	
3	279527	Bandhan Bank Ltd.	201903	201803	31-Mar-2019	201703	31-Mar-2018	
4	132210	City Union Bank Ltd.	201903	201803	31-Mar-2019	201703	31-Mar-2018	
5	132772	DCB Bank Ltd.	202003	201903	31-Mar-2020	201803	31-Mar-2019	
6	100180	HDFC Bank Ltd.	202003	201903	31-Mar-2020	201803	31-Mar-2019	
7	132174	ICICI Bank Ltd.	201903	201803	31-Mar-2019	201703	31-Mar-2018	
8	100116	IDBI Bank Ltd.	201903	201803	31-Mar-2019	201703	31-Mar-2018	
9	278580	IDFC First Bank Ltd.	202003	201903	31-Mar-2020	201803	31-Mar-2019	
10	132187	IndusInd Bank Ltd.	201903	201803	31-Mar-2019	201703	31-Mar-2018	
11	100247	Kotak Mahindra Bank Ltd.	202003	201903	31-Mar-2020	201803	31-Mar-2019	
12	209068	RBL Bank Ltd.	202003	201903	31-Mar-2020	201803	31-Mar-2019	
13	100469	The Federal Bank Ltd.	202003	201903	31-Mar-2020	201803	31-Mar-2019	
14	132209	The Jammu & Kashmir Bank Ltd.	201903	201803	31-Mar-2019	201703	31-Mar-2018	
15	132652	The Karnataka Bank Ltd.	202003	201903	31-Mar-2020	201803	31-Mar-2019	

SECTOR
Screens

Sector Outlook :
Sector Trend and Analysis

Performance By Turnover				Select Year ▾
Industry	Sales Turnover (₹ In Crores)			
	2019	2018	Chg (%)	
Refineries	1943273.89	1644408.07	18.17	
Bank - Public	716236.44	676849.58	5.82	
IT - Software	513355.12	476788.07	7.67	
Steel & Iron Products	451797.03	441487.31	2.34	
Bank - Private	438465.48	386738.66	13.38	
Power Generation/Distribution	398650.92	779738.57	-48.87	
				More>>

Performance By Profit After Tax				Select Year ▾
Industry	Profit After Tax (₹ In Crores)			
	2019	2018	Chg (%)	
IT - Software	87624.62	83779.50	4.59	
Refineries	67800.31	77209.03	-12.19	
Mining & Minerals	37402.25	21887.12	70.89	
Bank - Private	36167.09	40302.01	-10.26	
Finance - NBFC	33812.76	17590.81	92.22	
Oil Exploration	30788.11	22790.88	35.09	
				More>>

Top Sectors			
Unspecified	<div><div></div><div></div><div></div></div>	103	10565
Pharmaceuticals & Drugs	<div><div></div><div></div><div></div></div>	60	94
Trading	<div><div></div><div></div><div></div></div>	73	312
Finance - NBFC	<div><div></div><div></div><div></div></div>	64	268
Textile	<div><div></div><div></div><div></div></div>	66	155

Sector Outlook	
08-Jul-2020	Telecom sector to perform well in coming time
27-Jun-2020	Short term outlook for gems and jewellery sector loo...
17-Jun-2020	Indian real estate sector likely to struggle through...
08-Jun-2020	Coronavirus outbreak to hit profitability of Indian ...
30-May-2020	Aviation sector's outlook looks negative for short t...
20-May-2020	Sugar industry's outlook looks grim in coming time

Detailed Stock Reports

Industry Aggregated Analysis on Balance sheet, Profit & Loss, Cash Flow, Results etc...

General

Finance

Balance Sheet

Profit and Loss

Cash Flow

Ratios

Fund Holdings

Results

Performance By Turnover

Performance By Profit After Tax

Balance Sheet

Industry : Retailing

Change Industry

Go

Abridged

Aggregated

Actual

Go

(Indian Rupee .in Millions)

Change My Settings

Particulars	Latest	2020	2019	2018	2017	2016	2015	2014	2013	2012
Currency Rate (INR) As Of	31-12-2020	31-03-2020	31-03-2019	31-03-2018	31-07-2017	31-07-2016	31-03-2015	31-12-2014	31-12-2013	31-12-2012
Currency Rate (INR) In INR	1.00	1.00	1.00	1.00	1.00	1.00	1.00	1.00	1.00	1.00
No Of Companies	305	4	113	161	182	192	187	210	212	221
SOURCES OF FUNDS										
+ Share Capital	406,746.13	761.81	287,186.37	242,261.19	217,073.54	214,212.67	206,156.25	214,330.56	134,734.84	145,829.69
Share warrants & Outstandings	21,278.45	161.24	1,564.97	1,497.31	19,544.15	13,278.28	14,049.11	12,678.04	72,831.48	12,016.17
+ Total Reserve	225,580.97	31,218.62	197,886.25	175,192.48	75,185.06	24,530.95	11,813.97	-25,676.92	-44,535.98	12,015.32
Shareholder's Funds	653,128.71	32,141.67	486,637.58	418,950.98	311,802.74	252,021.90	232,019.32	201,331.68	163,030.34	168,962.99
+ Secured Loans	124,040.63	0.00	85,941.63	91,922.33	82,665.21	98,020.21	83,173.90	108,216.85	53,395.83	79,370.85
+ Unsecured Loans	245,541.03	24,726.42	87,267.15	110,738.44	154,295.32	121,180.21	120,179.21	120,039.13	209,912.86	156,116.79
Total Debts	369,581.65	24,726.42	173,208.78	202,660.77	236,960.53	219,200.06	203,233.10	228,259.26	263,308.07	235,321.49
Total Liabilities	1,022,710.36	56,868.09	659,846.37	623,004.19	548,398.73	472,150.25	438,309.65	429,699.80	426,245.27	404,183.46
APPLICATION OF FUNDS :										
+ Fixed Assets	528,755.71	30,946.34	430,159.47	352,455.13	296,107.30	280,036.98	268,478.83	239,037.54	154,874.02	191,536.48
+ Less: Accumulated Depreciation	144,651.49	4,537.47	122,430.87	100,485.90	76,732.79	74,865.21	86,378.11	67,697.45	48,605.60	46,729.96
Less: Impairment of Assets	158.12	0.00	120.15	15.87	21.30	82.49	184.78	87.07	516.71	48.99
+ Net Block	383,946.10	26,408.87	307,608.45	251,953.36	219,353.21	205,089.29	181,915.94	171,253.02	105,751.71	144,757.54
Lease Adjustment A/c	0.00	0.00	0.00	0.00	204.14	0.00	0.00	0.00	0.00	0.00
Capital Work in Progress	70,789.38	312.75	61,028.92	58,099.10	20,470.50	18,186.08	13,850.20	15,320.02	10,287.10	17,405.57
Pre-operative Expenses pending	0.00	0.00	0.00	0.00	0.00	0.00	0.00	1.86	19.81	9.22
Assets in transit	0.00	0.00	0.00	0.00	0.00	0.00	0.00	0.00	0.00	0.00
+ Investments	508,109.18	25,830.09	268,440.86	255,915.81	229,556.04	202,781.16	195,299.66	196,355.16	294,348.55	217,098.80
Current Assets, Loans & Advances										
+ Inventories	435,308.96	7,505.87	343,320.67	311,672.28	244,757.97	232,854.29	192,631.13	163,798.60	101,155.31	133,601.10
+ Sundry Debtors	135,491.08	1,447.38	85,995.61	78,791.11	69,121.68	52,206.43	54,160.75	47,982.42	37,130.66	53,817.71
+ Cash and Bank	54,069.43	1,598.97	43,205.61	38,950.81	46,795.49	24,271.34	26,733.02	22,900.10	21,439.55	19,641.47
+ Other Current Assets	27,894.24	589.28	22,094.48	19,898.77	17,760.99	9,796.87	6,072.87	9,066.65	5,058.05	4,847.28
+ Loans and Advances	118,400.89	3,343.48	78,768.15	84,886.82	61,434.42	69,336.62	41,724.06	41,287.76	22,627.20	45,912.84
Total Current Assets	769,883.02	14,484.98	573,384.52	534,103.74	439,842.12	381,528.76	321,039.51	284,150.26	187,184.22	254,306.76
Less: Current Liabilities and Provisions										

MUTUAL FUND Screens

MUTUAL FUND Details

Mutual Funds database is covering 48 AMCs and more than 15000 schemes including basic details of the schemes and portfolios, asset / sector-wise details, fund manager's details , NFO Details etc...

Mutual Fund	New Fund Offers						
Latest NAV	Existing NFO		Forthcoming NFO		Latest FMP Series		
New Fund Offers	Asset : <div>Select Asset ▼</div> <div>Submit</div>						
Category Returns	Scheme Name		Type	Open Date	Close Date	Min. Amount. Rs.	Category
All Holdings	BHARAT Bond ETF - April 2025		Debt	14-Jul-20	17-Jul-20	1000	ETFs - Debt
MF Activity	BHARAT Bond ETF - April 2031		Debt	14-Jul-20	17-Jul-20	1000	ETFs - Debt
Historical NAV	BHARAT Bond FOF - April 2025 -Reg(G)		Other	14-Jul-20	17-Jul-20	1000	FoFs (Domestic) - Debt Oriented
MF Synopsis	BHARAT Bond FOF - April 2025 -(G)-Direct Plan		Other	14-Jul-20	17-Jul-20	1000	FoFs (Domestic) - Debt Oriented
MF News	BHARAT Bond FOF - April 2031 -Reg(G)		Other	14-Jul-20	17-Jul-20	1000	FoFs (Domestic) - Debt Oriented
Scheme Profile	BHARAT Bond FOF - April 2031 -(G)-Direct Plan		Other	14-Jul-20	17-Jul-20	1000	FoFs (Domestic) - Debt Oriented
What's In/Out	Mirae Asset Banking and PSU Debt Fund-Reg(G)		Debt	08-Jul-20	20-Jul-20	5000	Debt - Banking and PSU Fund
Fund Ranking	Mirae Asset Banking and PSU Debt Fund(G)-Direct Plan		Debt	08-Jul-20	20-Jul-20	5000	Debt - Banking and PSU Fund
Return Calculator	HSBC Focused Equity Fund-Reg(G)		Equity	01-Jul-20	15-Jul-20	5000	Equity - Focused Fund
Multi Scheme Return Calculator	HSBC Focused Equity Fund(G)-Direct Plan		Equity	01-Jul-20	15-Jul-20	5000	Equity - Focused Fund
SIP Calculator	(Page 1 of 1)						
Compare Funds	Previous Next						
Fund Performance							
Portfolio Comparison							
Dividend details							
AUM							
Funds Movement							
Holding Trends							
AMFI Data							

Macro Economy

Foreign Exchange Reserves, Call Money, Rates, IIP Index, Cross Currency Rate, GDP Numbers, Commodities Prices, Economy News etc

Sector-wise (end use) Consumption of Selected Petroleum Products in India

From

2010

▼

To

2019


▼

Go

Year	Petroleum Product	Transport	Plantation	Power Generation	Industry	Misc. Services	Private Sales	Total
2019	Furnace Oil	786.00	78.00	339.00	2577.00	1801.00	611.00	6195.00
2019	High Speed Diesel Oil	6210.00	639.00	222.00	1264.00	75100.00	93.00	83528.00
2019	Light Diesel Oil	10.00	16.00	277.00	175.00	120.00	0.00	598.00
2019	Liquified Petroleum Gas	181.00	22.00	2.00	24297.00	89.00	316.00	24907.00
2019	Low Sulphur Heavy Stock	0.00	7.90	9.31	175.13	177.02	0.00	369.04
2018	Light Diesel Oil	7.00	9.00	143.00	149.00	216.00	0.00	524.00
2018	Liquified Petroleum Gas	185.00	7.00	1.00	22643.00	140.00	365.00	23342.00
2018	Low Sulphur Heavy Stock	NA	1.18	0.00	53.78	61.00	0.00	116.27
2018	Furnace Oil	601.00	50.00	314.00	2346.00	2623.00	672.00	6605.00
2018	High Speed Diesel Oil	5999.00	618.00	223.00	1155.00	72988.00	90.00	81073.00
2017	High Speed Diesel Oil	5658.00	607.00	208.00	1033.00	68474.00	46.00	76027.00
2017	Liquified Petroleum Gas	168.00	8.00	2.00	20867.00	134.00	429.00	21608.00
2017	Furnace Oil	444.00	51.00	361.00	2492.00	2913.00	784.00	7046.00
2017	Light Diesel Oil	7.00	2.00	174.00	60.00	206.00	0.00	449.00
2017	Low Sulphur Heavy Stock	0.00	0.00	16.43	50.88	36.91	0.00	104.23
2016	Furnace Oil	380.00	57.00	430.00	2136.00	2887.00	592.00	6482.00
2016	High Speed Diesel Oil	5765.00	630.00	224.00	1096.00	65694.00	55.00	74647.00
2016	Light Diesel Oil	4.00	1.00	154.00	61.00	186.00	0.00	407.00
2016	Low Sulphur Heavy Stock	NA	0.00	50.70	70.45	29.23	0.00	150.38
2016	Liquified Petroleum Gas	172.00	7.00	3.00	18848.00	105.00	489.00	19623.00

Macro Economy

Foreign Exchange Reserves, Call Money, Rates, IIP Index, Cross Currency Rate, GDP Numbers, Commodities Prices, Economy News etc

Energy , Fuel and Power	Net Investments by FIIs in the Indian Capital Market 													
Forex	From <input type="text" value="2010-11"/> To <input type="text" value="2019-20"/> <input type="button" value="Go"/>													
Industry														
Money and Banking														
National Income Statistics	Year	Apr	May	Jun	Jul	Aug	Sep	Oct	Nov	Dec	Jan	Feb	Mar	Total
CPI , WPI & Inflation	2019-20	12251.00	11204.00	2976.00	-14261.00	16756.00	8416.00	10505.00	13948.00	7715.00	19889.00	NA	NA	89398.00
Public Finance	2018-19	-6672.00	-9196.00	-4183.00	4686.00	-181.00	-5345.00	-25774.00	6713.00	1477.00	1627.00	12579.00	40576.00	16307.00
Telecom	2017-18	-1740.00	10930.00	3667.00	4592.00	-11824.00	-11776.00	-1110.00	15798.00	-1432.00	14466.00	-11834.00	16850.00	26587.00
Trade and Balance of Payment	2016-17	6929.00	2561.00	5133.00	10993.00	10254.00	10064.00	-5050.00	-17355.00	-8624.00	-1373.00	11111.00	33683.00	58326.00
Money Stock	2015-16	7761.00	-475.00	-5801.00	5980.00	-16334.00	-5061.00	5104.00	-5081.00	1098.00	-10060.00	-7626.00	25613.00	-4882.00
Finance Markets	2014-15	7923.00	16844.00	11260.00	11072.00	6829.00	6062.00	387.00	13709.00	-910.00	18063.00	8776.00	10228.00	110243.00
Population	2013-14	6141.00	20784.00	-9374.00	-6310.00	-5805.00	13062.00	18324.00	7626.00	15716.00	324.00	2959.00	22075.00	85522.00
Education	2012-13	-1218.00	-1332.00	4072.00	7800.00	9866.00	20938.00	10346.00	11096.00	23490.00	22416.00	22095.00	11056.00	140625.00
Employment	2011-12	3249.00	-2546.00	5513.00	5621.00	-8944.00	2853.00	2798.00	-3929.00	-17.00	11339.00	25192.00	8787.00	49916.00
	2010-11	8967.00	-8647.00	9447.00	17018.00	10397.00	29507.00	24634.00	17874.00	2170.00	-6147.00	-3878.00	9417.00	110759.00

ACE DIGITAL LIBRARY

Get deep understand by reading PDF report of Annual Reports - Listed and Private, Conference Call Transcript, Analyst Meet Presentation, Corporate Announcement, IPO Draft Prospectus and In house research reports.

Annual Report	Conference Call	Quarterly Results	Announcements
<div><div></div><div>04-09-2013</div><div>Tata Consultancy Servi...</div></div>	<div><div></div><div>23-07-2020</div><div>REC</div></div>	<div><div></div><div>10-07-2020</div><div>TCS</div></div>	<div><div></div><div>17-04-2020</div><div>Ambuja Cement</div></div>
<div><div></div><div>04-09-2013</div><div>Reliance Industries Ltd.</div></div>	<div><div></div><div>17-07-2020</div><div>Ashiana Housing</div></div>	<div><div></div><div>20-06-2020</div><div>PNB</div></div>	<div><div></div><div>17-04-2020</div><div>Amal</div></div>
<div><div></div><div>04-09-2013</div><div>ITC Ltd.</div></div>	<div><div></div><div>13-07-2020</div><div>S Chand And Co</div></div>	<div><div></div><div>19-06-2020</div><div>Titan Co</div></div>	<div><div></div><div>17-04-2020</div><div>Amal</div></div>
<div><div></div><div>04-09-2013</div><div>Infosys Ltd.</div></div>	<div><div></div><div>09-07-2020</div><div>TCS</div></div>	<div><div></div><div>17-06-2020</div><div>Tata Motors</div></div>	<div><div></div><div>17-04-2020</div><div>Bslftpjedn</div></div>
<div><div></div><div>04-09-2013</div><div>Coal India Ltd.</div></div>	<div><div></div><div>08-07-2020</div><div>BCL Industries</div></div>	<div><div></div><div>15-06-2020</div><div>Grasim Industries</div></div>	<div><div></div><div>17-04-2020</div><div>Atul</div></div>
<div><div></div><div>04-09-2013</div><div>HDFC Bank Ltd.</div></div>	<div><div></div><div>06-07-2020</div><div>Edelweiss Financial</div></div>	<div><div></div><div>13-06-2020</div><div>Vedanta</div></div>	<div><div></div><div>20-03-2020</div><div>Dace2rg</div></div>
<div><div>Listed</div><div>Unlisted</div><div>More >></div></div>	<div><div>More>></div></div>	<div><div>More>></div></div>	

Digital Annual Reports

Company Search Listed

Enter Company Name

bata

SEARCH

Enter **NSE,BSE** Codes for a Company or enter a few characters from the Company's name and

☐ "Starts with"

☐ "Contains"

Choose "Starts with" or Contains option

Search Results for :: " bata "

Company Name	NSE Code	BSE Code
Bata India Ltd.	BATAINDIA	500043
Bata Properties Ltd.		

MARKET LIVE

Screens

MARKET SNAPSHOT

Equity
Derivatives
Economy
Commodities
Corporate Action
Technicals
IPO
Other Markets

Market Snapshot

Stocks Watch

SENSEX : 36205.55 ▼-488.14 -1.33%

NIFTY : 10663.95 ▼-138.75 -1.28%

News

Commentry

Live Announcements

Hot Stocks

Company News

Corporate Results

MF News

IPO News

10:38

Balaji Telefilms falls on halting shooting after actor tests positive...

10:27

Hexaware Technologies surges on the BSE

10:05

Biocon trades higher on the bourses

09:54

Coromandel International moves up on redeeming CP worth Rs 200 crore

09:41

MCX gains on starting mock trading to include zero, negative prices

09:25

Cipla inches up on getting USFDA's nod for Icatibant Injectable Pre-F...

03:17

JSW Steel spurts on the bourses

03:03

TVS Motor gains on the BSE

02:43

BASF India zooms on getting nod to acquire 100% stake in BASF Perform...

02:25

Punjab & Sind Bank tumbles on reporting fraud of Rs 112 crore in 2 ac...

more

Market

Gainers/Losers

Sector

World

BSE

36242.85 ▼

-450.84

-1.23%

36,800

36,600

36,400

36,200

36,000

09:00

09:30

10:00

10:30

NSE

10694.00 ▼

-108.70

-1.01%

GOLD (₹)

49079 ▼

0

0 %

Crude Oil (₹)

78.04 ▲

1.04

1.35 %

Market at Glance		
Board Meetings	Block Deals	Highs & Lows
Result Announced	Bulk Deal	Book Closure
Result Calender	Market Turnover	Gainers & Losers
Insider Training	Sector Watch	IPO Watch
Pledged Shares Details	Advance / Decline	List Of Holidays

Stock Screeners		
Screeners	Market Tracker	Market Map
Income Report	Profit Report	

FII		MF	DII	ADR
Date	Type	Purc (₹ in Cr)	Sale (₹ in Cr)	Net Inv. (₹ in Cr)
13-07-20	Equity	2590	3524	-934
	Debt	2019	1549	469
10-07-20	Equity	7660	4283	3377
	Debt	420	1940	-1519

more

Exchange Overview

BSE | NSE

Group	Adv.	Dec.	Unch.
A	150	337	5
B	210	576	21
T	31	67	6
Z	10	17	2

more

STOCK WATCH

Stocks Watch

SENSEX : 36205.55 ▼-488.14 -1.33%

NIFTY : 10663.95 ▼-138.75 -1.28%

Company	LTP	Chg(Rs)	Volume	High	Low	Bid Price	Bid Qty	Offer Price	Offer Qty
TCS	2203.65	-15.90	61481	2237.45	2200.00	2203.85	12	2204.70	1

BSE | NSE

09:0009:2009:3009:4009:5010:0010:1010:2010:3010:40

News

Jul 10, 2020TCS reports 14% fall in Q1 consolidated...

Jul 08, 2020TCS launches Quartz Smart Solution for ...

Jul 07, 2020TCS expands partnership with Tryg

Jul 06, 2020TCS deploys digital solution for London...

Jul 02, 2020TCS,Celonis partner to help enterprises...

Jul 02, 2020TCS BaNCS recognized as leader in IBSI ...

more

More Links

Company Background

Profit & Loss

Quarterly Results

MF Holdings

Cash Flow

Detailed View

NTPC	88.65	-1.20	130311	90.45	88.60	88.65	1216	88.75	8000
ACC	1325.50	-20.15	21363	1360.20	1324.65	1325.00	16	1325.50	6
Vodafone Idea	9.61	-0.15	17722099	9.69	9.46	9.61	107207	9.62	24957
Tata Steel	333.85	-8.15	102101	339.50	333.85	333.85	328	334.05	517

Add/Edit

Refresh

Who we are



Accord Fintech Pvt. Ltd., Is 11 Years Old, An Iso 9001:2008 Certified Company, Set Up By A Team Of Professionals With Competencies In Financial Content, Software Development And Financial Domain Knowledge. It Is Recognized As 10 Most Recommended Financial Solution Providers- 2018 By Cio Insider Magazine.

Our Core Strength Is A Comprehensive Understanding Of The Financial Domain And Development Of Products / Applications / Web Solutions Which Cater To Its Technological Needs.

We Compile And Distribute Content Like Equities Any Performances, Mutual Funds, Insurance, F&O, Macro Economy Factors And Interview Sections Make The Visitors To Know The Latest Happenings On The Corporate Sector. Quite A Number Of Indian As Well As International Corporate Portals Source.

Thank
you!

Accord Fintech Pvt. Ltd.

2nd Floor, Navbharat Press Building, Sector - 8, Near Millennium Tower, Sanpada (E), Navi Mumbai - 400706

Tel : +91-22-67834000 / 48904000, Fax : +91-22-67834001, Email : info@accordfintech.com

- Ahmedabad : +91-9375404042
- Bangalore : +91-9379404042
- Chennai : +91-9362040819
- Delhi : +91-9312101077
- Hyderabad : +91-9346216482
- Kolkatta : +91-9378077772
- Mumbai : +91-22-67834000
- Pune : +91-7666999805